

# Introducing the fully integrated YellowScan Surveyor with Applanix APX-15 UAV: the world's lightest and most accurate LiDAR Direct Georeferencing solution for UAVs.



capture everything. precisely.



Survey Instruments for UAVs

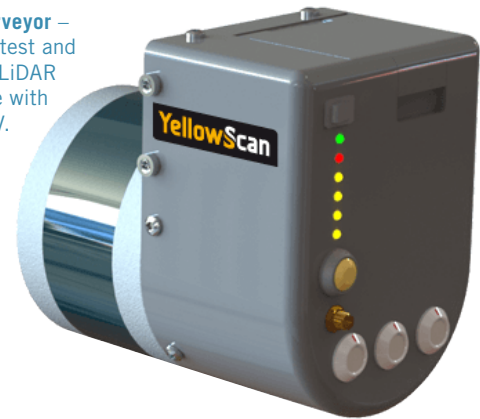
Designed by surveyors for surveyors, the YellowScan Surveyor is a LiDAR solution for UAV's ideally suited for precise topography mapping tasks. Quick and easy to operate, it answers the demanding requirements of civil engineering and mining applications.

A robust and fully integrated system capable of meeting the needs of the most demanding survey professionals and terrain, the YellowScan Surveyor is quickly and easily adapted to virtually any UAV, generating data when and where you need it.

The YellowScan team carefully selected and deployed the best high-end components for unparalleled performance and for achieving highly accurate position and orientation Direct Georeferencing; this meant the Applanix APX-15 UAV single board GNSS-Inertial OEM solution for Direct Georeferencing and POSPac UAV post processing software.

APX-15 UAV is designed to enable small UAVs to produce highly accurate, directly georeferenced aerial images for any imaging payload (visual, LiDAR, infra-red, multispectral imaging, even video). Measuring just 6 cm x 6.7 cm and weighing only 60 grams, the Applanix APX-15 UAV provides unparalleled performance in an extremely small package. The included POSPac UAV post-mission software produces an even higher accuracy position and orientation solution for direct georeferencing.

**YellowScan Surveyor –**  
The worlds lightest and most accurate LiDAR solution for use with almost any UAV.



**APX-15 UAV –**  
Survey-grade GNSS and MEMS inertial sensors on a single board.



Applanix has recognized the need to provide the growing UAV mapping market with the same highly efficient solutions that it pioneered for airborne mapping over 15 years ago. We are offering a cost-effective solution that meets the size, weight, power and cost requirements of small UAVs, and maintains the Applanix pedigree for quality and performance.

## Surveyor Specifications

- Precision: 3cm
- Absolute accuracy: 5cm
- Laser scanner frequency: 300 kHz
- Weight: 1.5 kg battery included
- Power consumption: 15W
- Autonomy: 1.5 hours typ.
- Size (mm): 100 x 150 x 140

## Applications

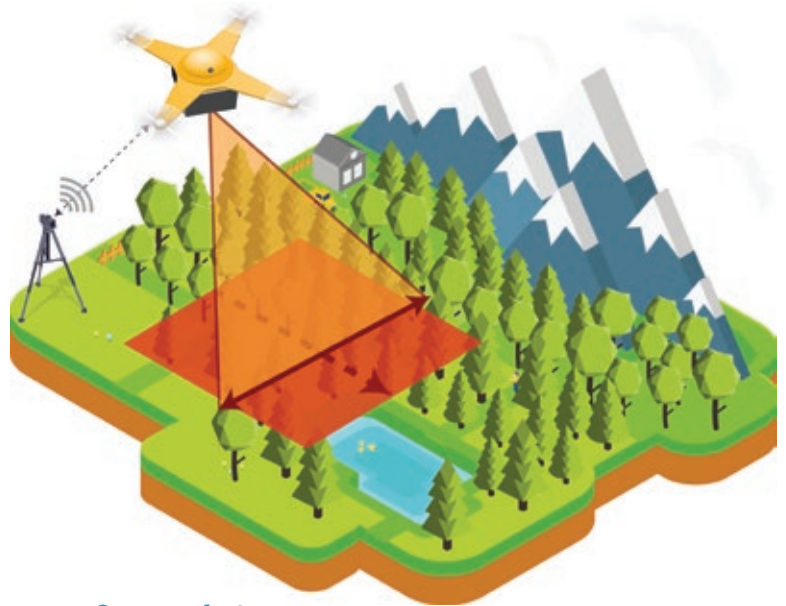
- Power Lines
- Forestry
- Archeology
- Civil Engineering, Mining

## About YellowScan

YellowScan designs, develops and produces UAV mapping solutions for professional applications. Fully integrated, ultra-light and easy to use, these highly automated data collection tools are used by customers around the world in fields such as surveying, forestry, environmental research, archeology, corridor mapping, civil engineering and mining. With more than 10 years of field experience, YellowScan is committed to delivering the highest level of performance, reliability and robustness for its solutions. YellowScan's platforms are field tested all over the world in multiple environments (tropical forests, bare soils, mountains, rivers, coast lines, open-pit mines, power lines).

## About Applanix

Applanix, a Trimble Company (NASDAQ: TRMB), develops, manufactures, sells and supports products and solutions for mobile mapping and positioning. Applanix' products and solutions are used in a variety of applications, including road profiling, GIS data acquisition, aerial surveying and mapping, railroad track maintenance and seafloor mapping. Established in 1991, Applanix supports its growing global customer base with exceptional service.



## Surveyor features:

The YellowScan Surveyor has the following features:

- APX-15 UAV GNSS-Aided Inertial Direct Georeferencing solution
- Full multi-constellation RTK and Post-processed DGNS support via POSpac UAV
- Multi-echo laser scanner
- On-board computer for continuous data acquisition and processing
- Battery (up to 1.5 hours of autonomy)
- Worldwide technical and operational support

“At YellowScan, we develop a deep understanding of customer needs and then build the state of the art solution. With the Surveyor, the critical data customers need is available with the push of a yellow button. The solution is robust and reliable, tested in the field.

We selected to work with Applanix because they are the established leader in the field with a well deserved reputation for premium quality.

Working with Applanix has been excellent. They have been very easy to work with and we look forward to more collaborations together.”

– Pierre d'Hauteville, YellowScan



*capture everything. precisely.*

Headquarters:  
85 Leek Crescent  
Richmond Hill, ON Canada  
L4B 3B3  
T +1.905.709.4600  
F +1.905.709.6027  
airborne@applanix.com  
www.applanix.com



Headquarters:  
1, Chemin du Fescou  
34980 Montferrier sur Lez  
France  
T +33 09 77 72 08 77  
contact@yellowscan.fr  
www.yellowscan.fr