

# Smart Hub for business

## Quick Start Guide



Version 1.0

For more in-depth instructions or troubleshooting, please consult our full installation instructions

### Smart Hub Installation



20 minutes  
installation time

### Before you start

**What's in the **Smart Hub** box?**

- Smart Hub
- Cradle
- Ethernet cable (10 metres)
- Allen key
- Power supply

**Not required for your installation**

- Mounting bracket
- Backplate
- Ethernet cable (20 metres)
- Metal clamp
- Assembly screws

**What's in the **Wi-Fi Hub** box?**

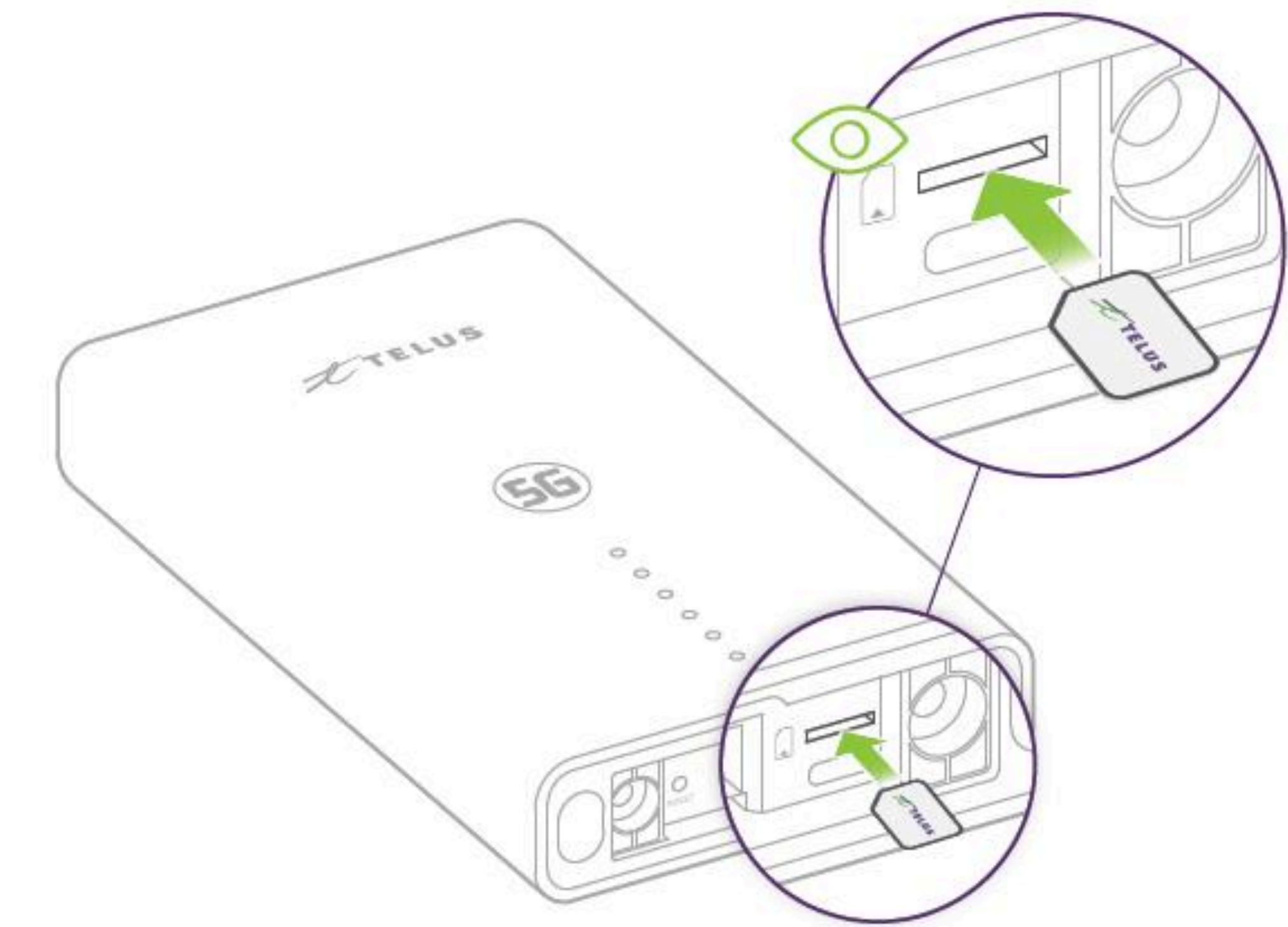
- TELUS Wi-Fi Hub
- Ethernet cable
- Power supply

**You'll need:**

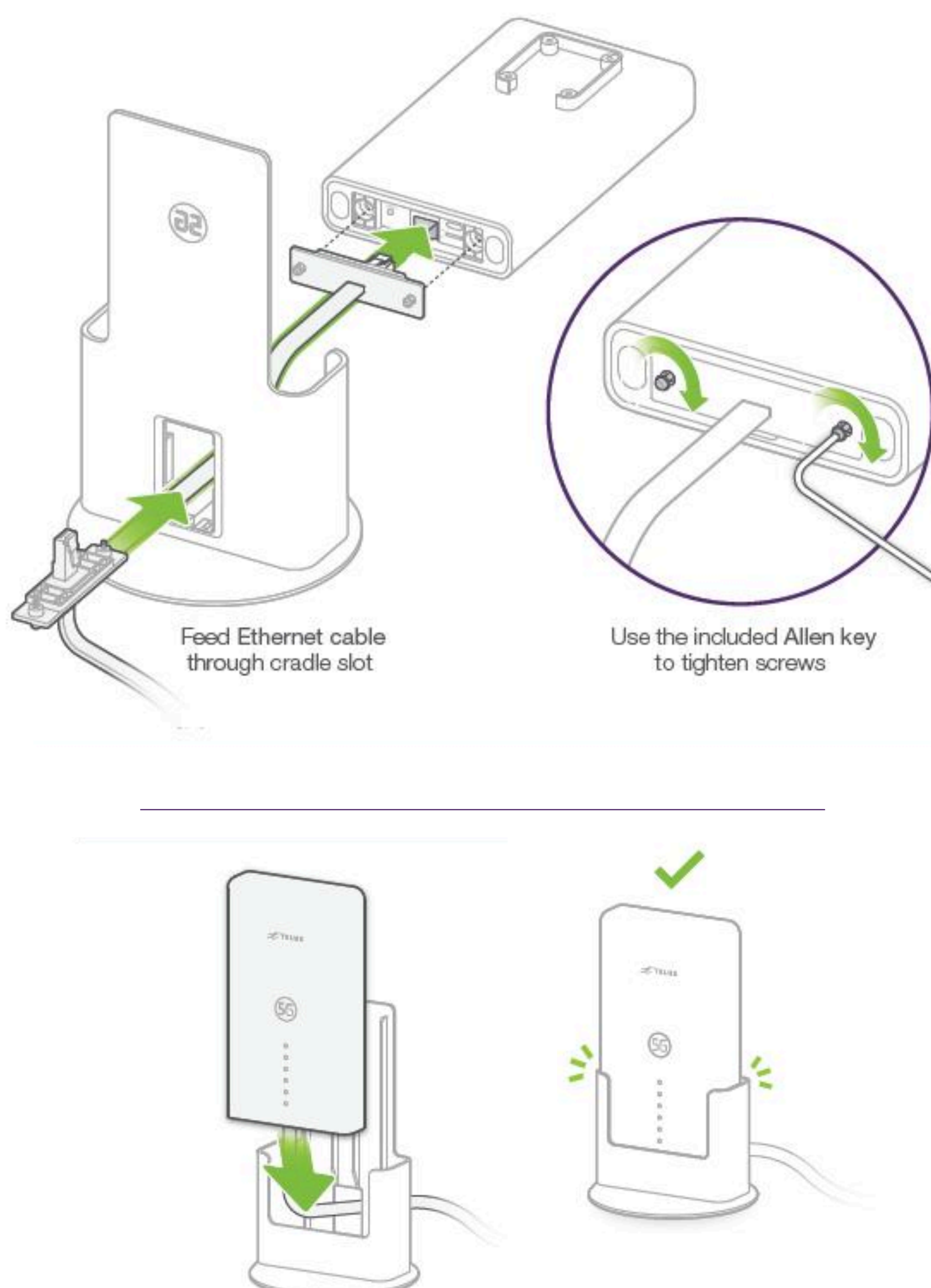
- Nano SIM card
- Smartphone or Tablet

### 1 Insert nano SIM card

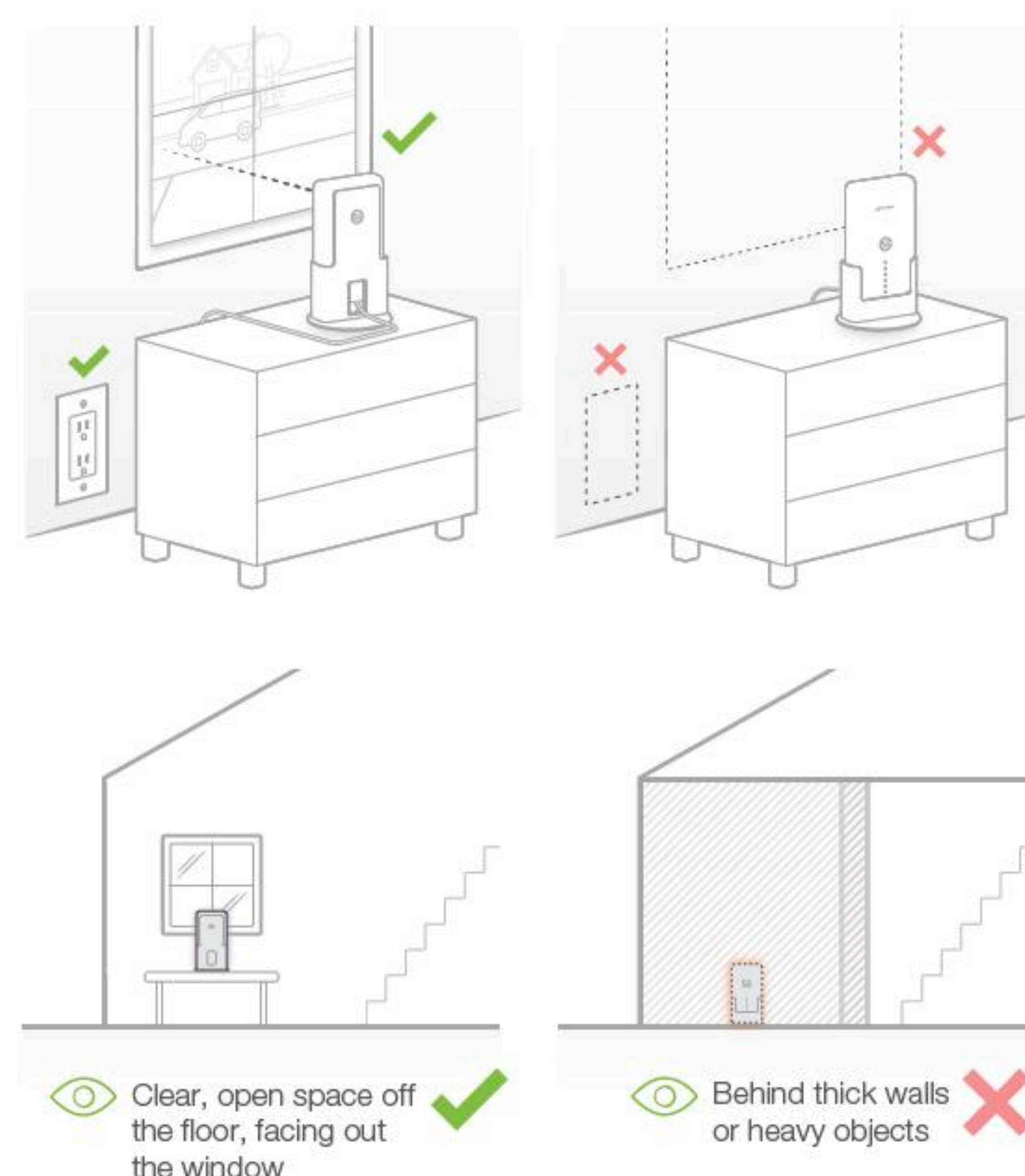
**IMPORTANT**  
Device must be powered off before installing or removing the nano SIM card.



### 2 Connect Ethernet cable and place Smart Hub in Cradle

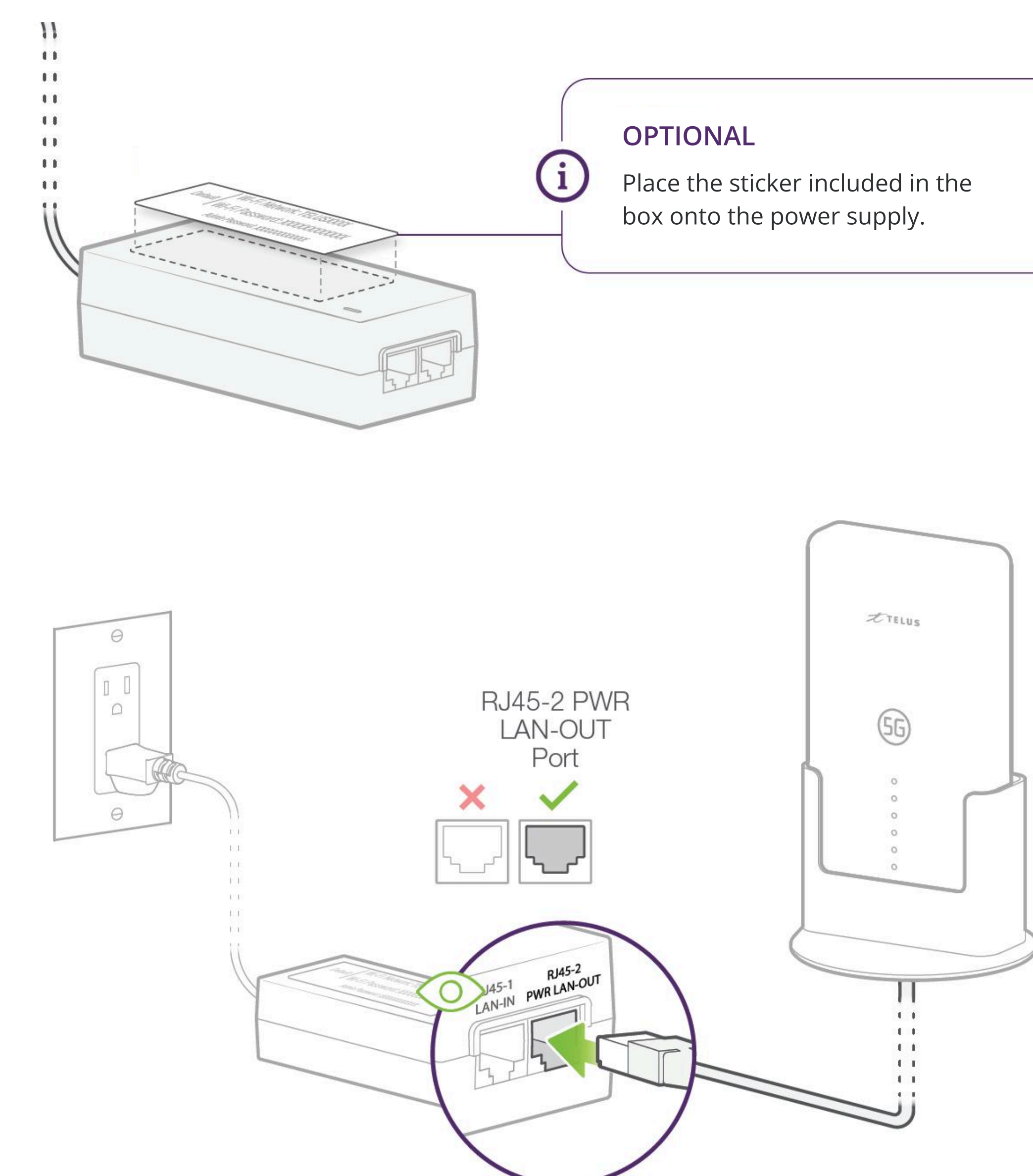


### 3 Select a Location for Smart Hub

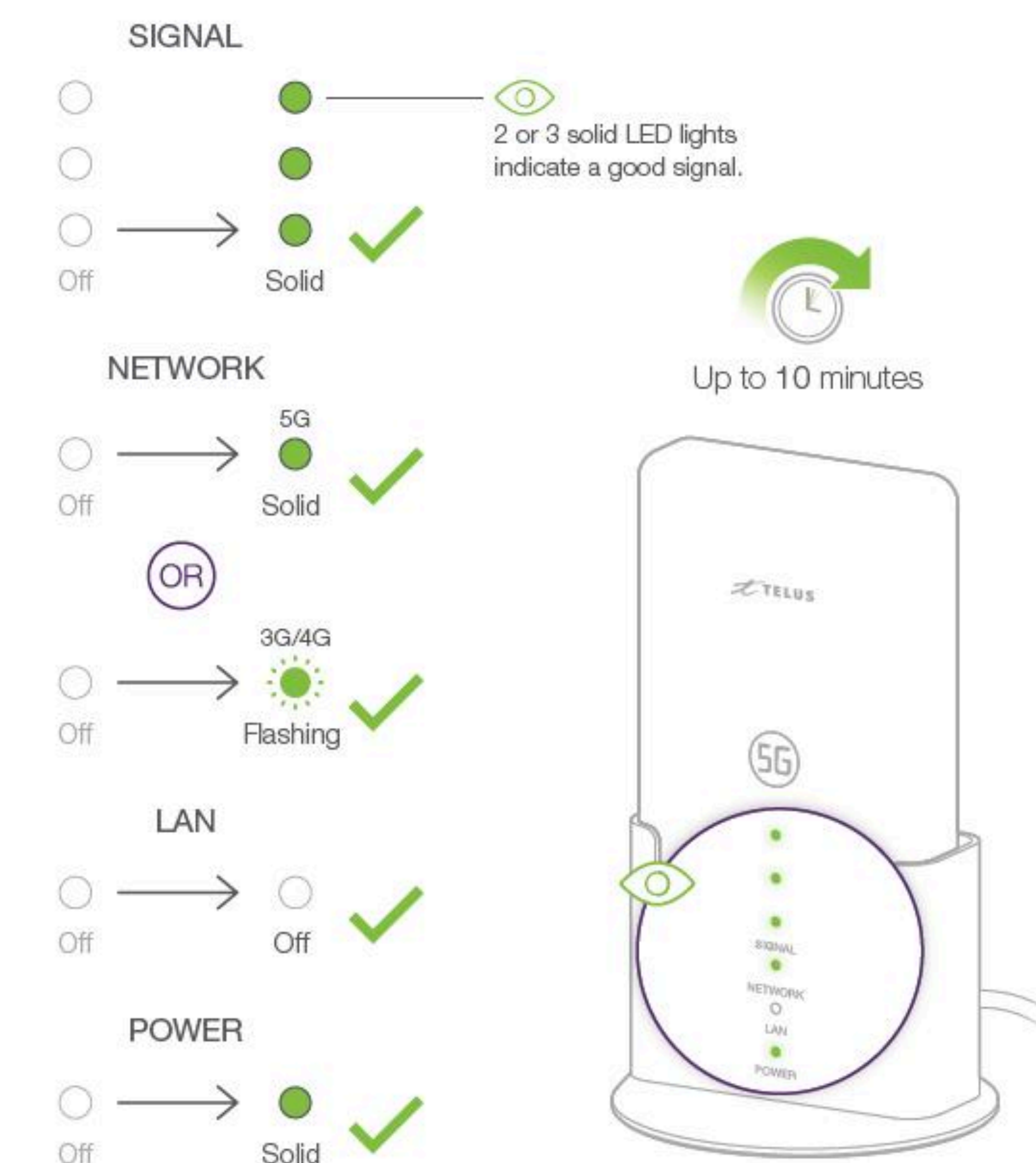


**TIP**  
For optimal experience, place your device by a window, facing out the window.

### 4 Connect to Power



### 5 Allow Smart Hub to boot up



**NOTE**  
After connecting power to the Smart Hub, if the Signal LEDs being to flash in sequence, the device is performing a software update. This update can take about 10-12 mins. Wait until the power and signal lights stay on steadily before continuing with the installation.



B

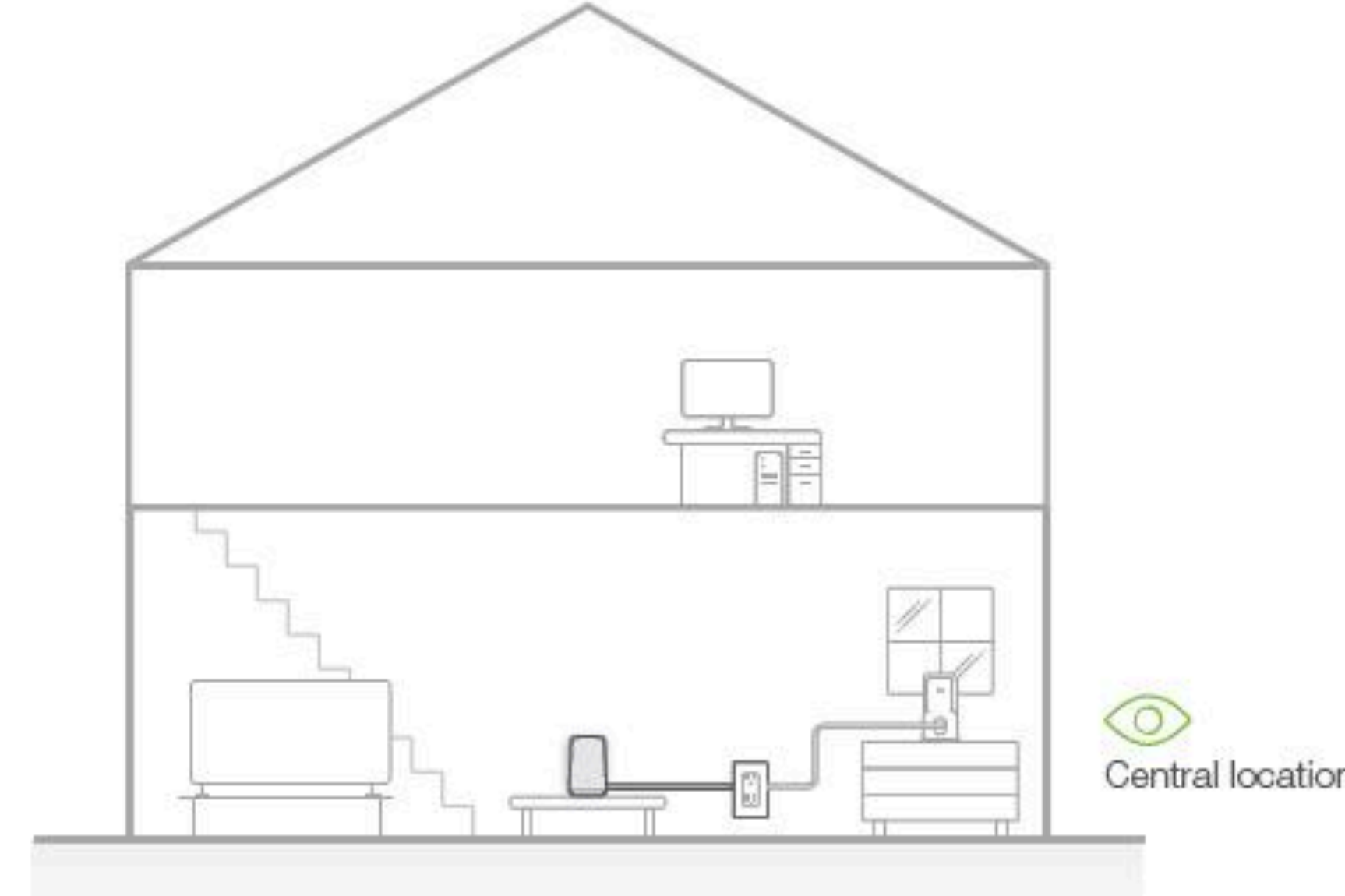
## TELUS Wi-Fi Hub Installation



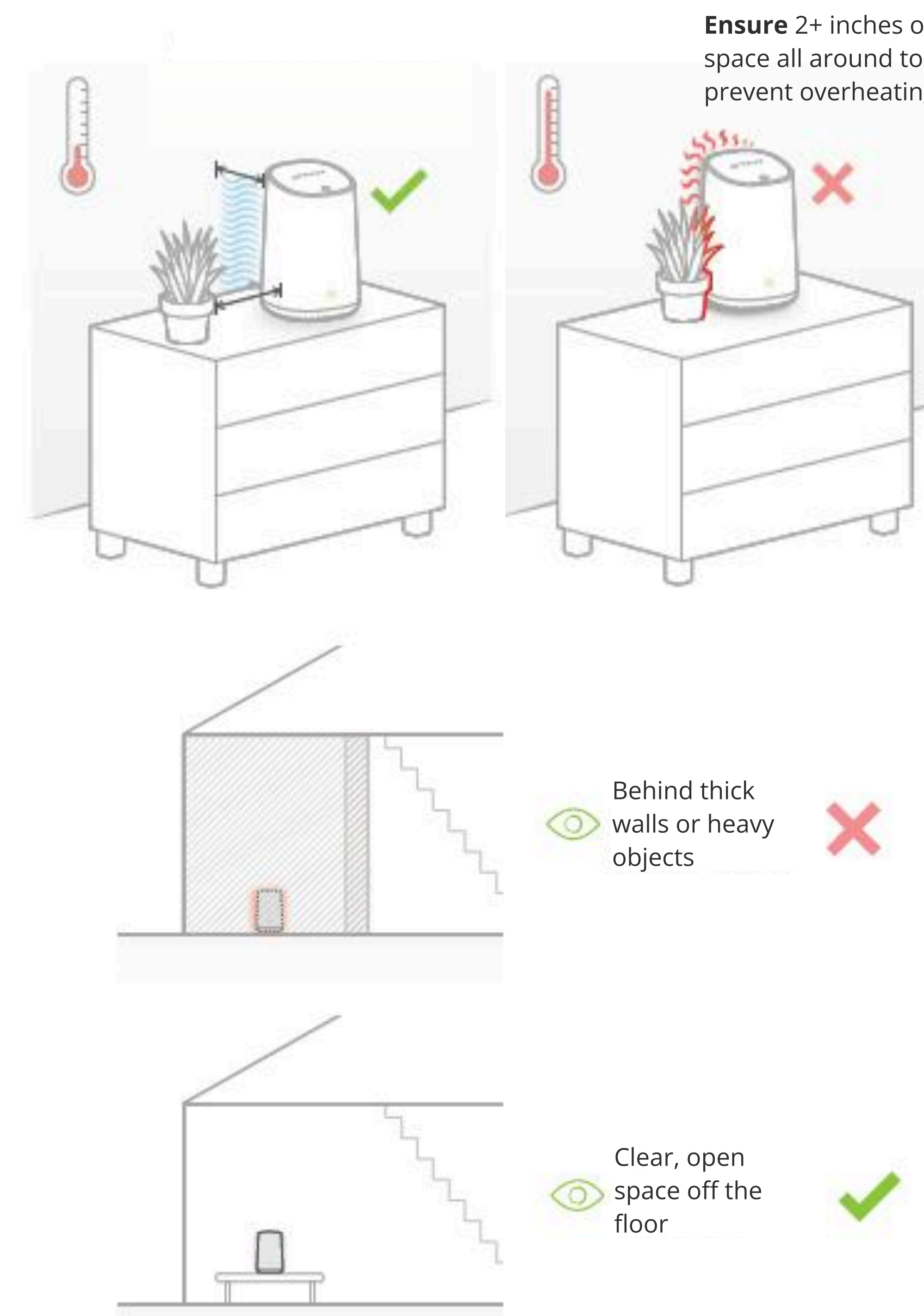
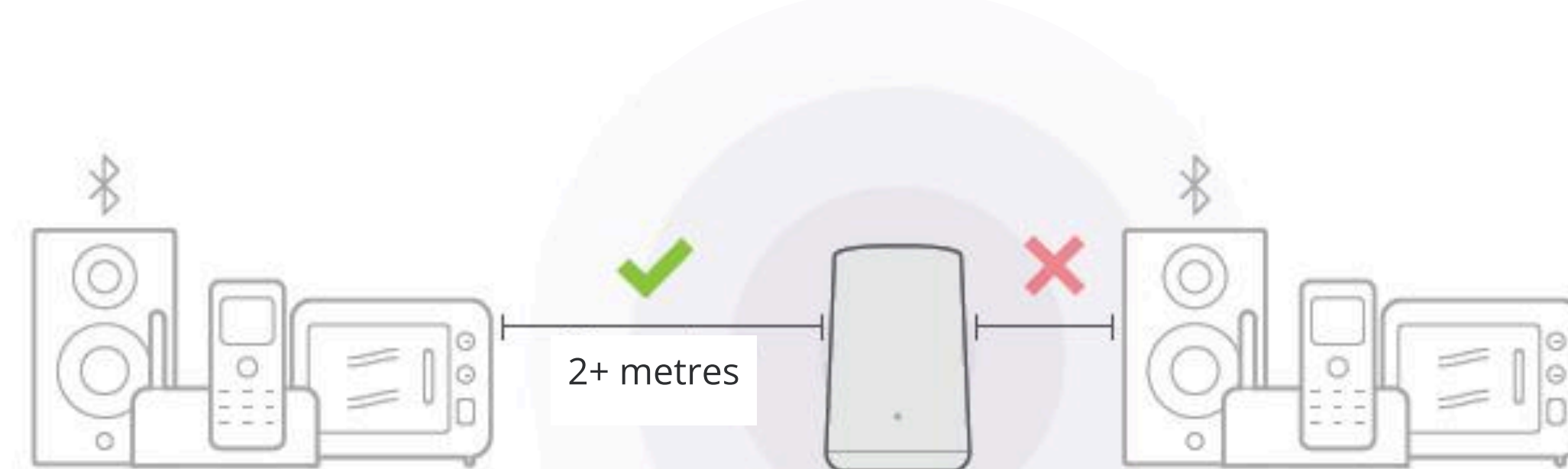
15 minutes  
installation time

## 6 Select a Location for TELUS Wi-Fi Hub

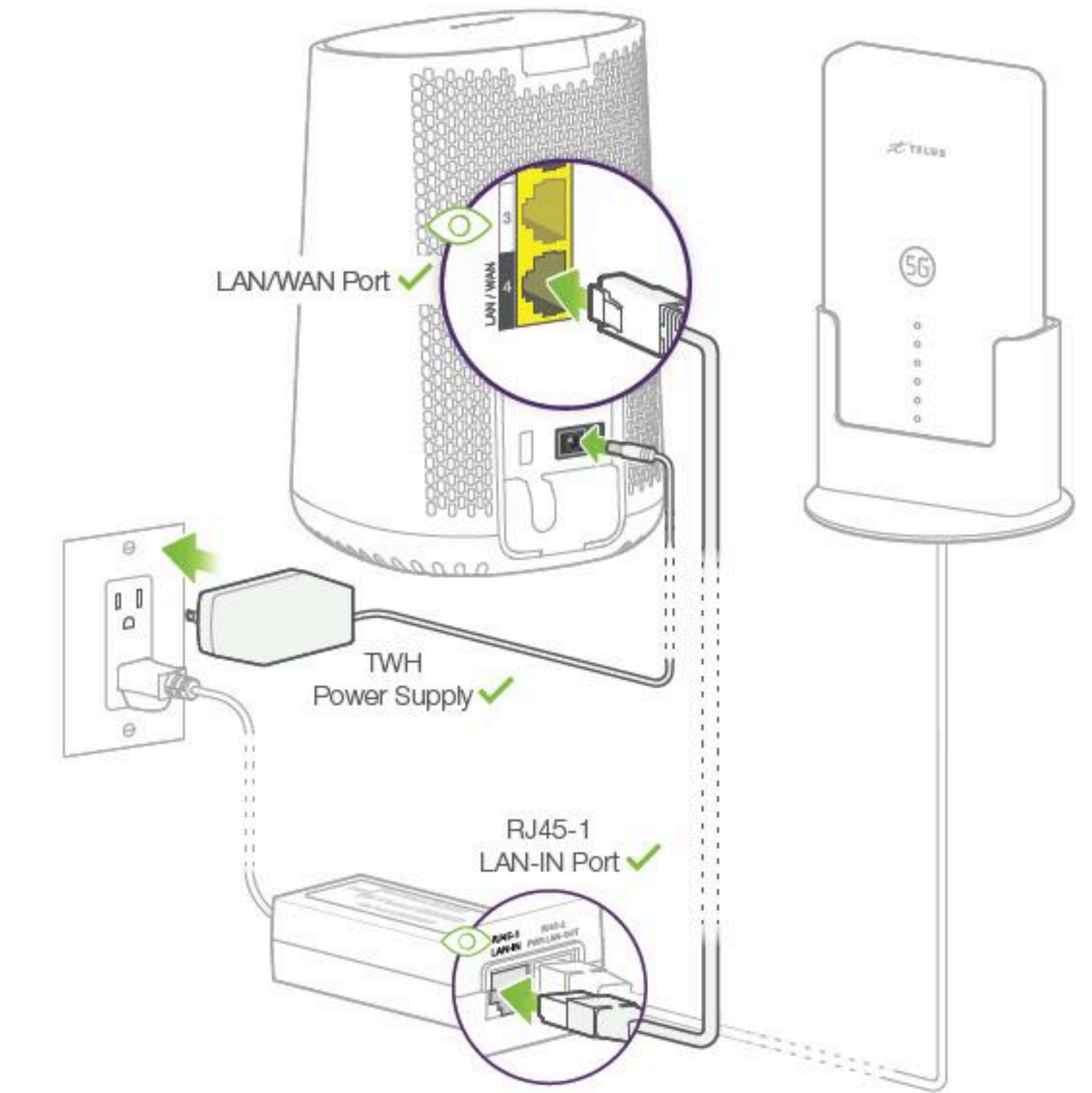
**TIP**  
Try to position the TELUS Wi-Fi Hub as close as possible to the central Wi-Fi usage area of your business.



**TIP**  
Avoid placing the TELUS Wi-Fi Hub closer than 2 metres to devices such as microwaves, cordless phones or Bluetooth wireless devices.

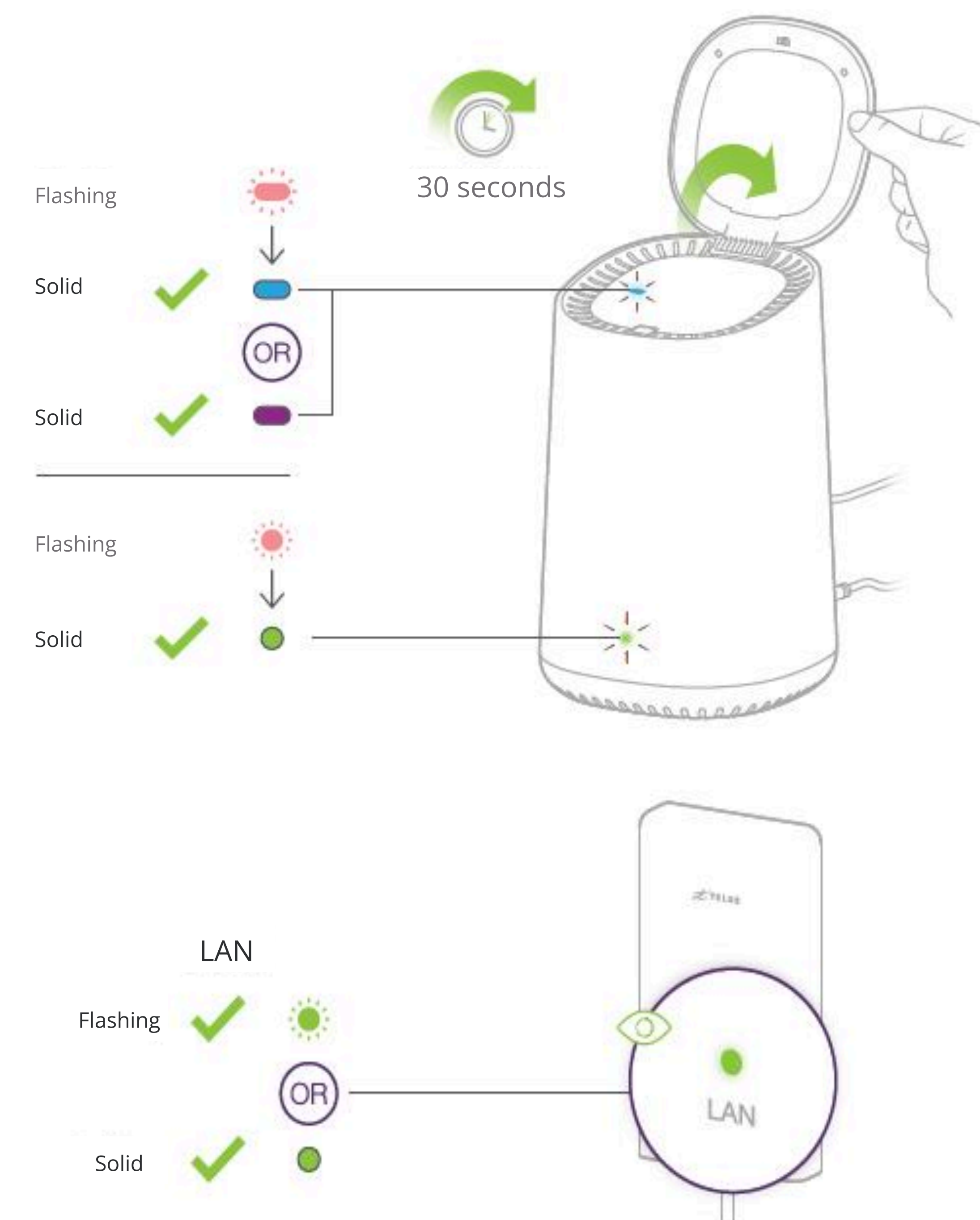


## 7 Connect TELUS Wi-Fi Hub



8

## Booting up TELUS Wi-Fi Hub



**Note**  
Refer to the lid on your TELUS Wi-Fi Hub for more information on LED states and troubleshooting.

9

## Booting up TELUS Wi-Fi Hub



**NOTE**  
Once you are connected to the TELUS Wi-Fi Hub, test your internet connection by searching for a website from your Internet browser.

## You're all done!



## Additional Support

For additional installation and setup support please visit:

[telus.com/StartSmartHub](https://telus.com/StartSmartHub)



## Benefits of registering for My TELUS

### View and pay bills

Customize your bill notifications or set up easy, pre-authorized payments.

### Manage your services

Upgrade your phone and make changes to your TV package, phone plan, or home internet.

### Earn rewards

Activate and redeem TELUS Rewards points from the app. You'll even get bonus points for activating.

## Register at

[telus.com/MyTELUS](https://telus.com/MyTELUS)