

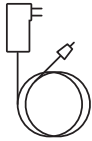


TELUS Optik TV[®]

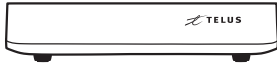
Self-Install Guide

Before you get started

What you'll find in your kit:



Power supply



4K wireless digital box



Optik TV remote



2x AAA batteries



HDMI cable

Optik TV in 4K:

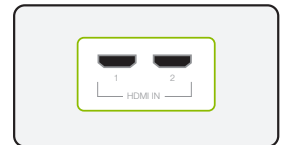
Please visit telus.com/4Krequirements for the minimum requirements to watch 4K television content. Your 4K wireless digital box will function normally for HD and SD content.

Additional support:

If you need help during installation, please visit telus.com/selfinstall for additional information or call **310-MYTV (6988)**.

Confirm your TV has an HDMI input and a remote:

Your kit includes an HDMI cable to connect your wireless digital box to the back of your TV. You will need the original TV manufacturer's remote to select the HDMI input you use.



Identify your T3200M modem:

You should already have a T3200M modem installed in your home. If you do not appear to have this device installed, please call **310-MYTV (6988)** for assistance.



Insert the batteries into the Optik TV remote:

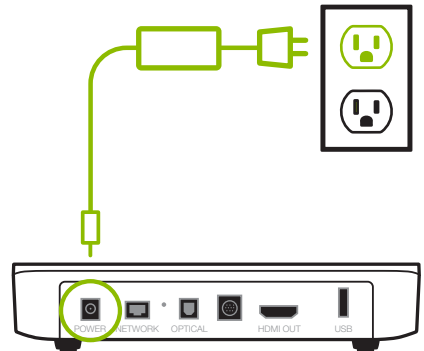
If you wish to pair this remote with your TV to control the power and volume, please visit telus.com/programremote for instructions.



Step 1: Setting up your 4K wireless digital box

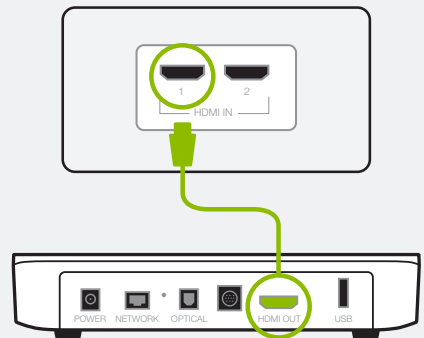
1a

Connect the power supply for the wireless digital box to an outlet. The green power light will appear on the front.



1b

Using the HDMI cable included in your kit, connect the wireless digital box to any available HDMI input on your TV.



1c

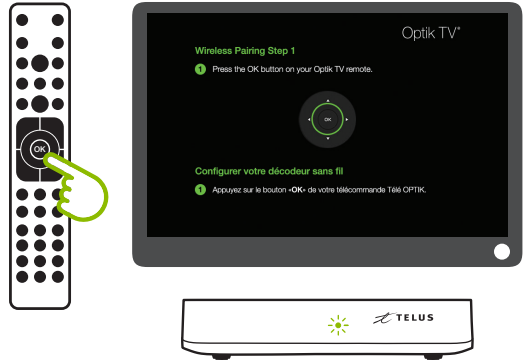
Using your TV manufacturer's remote, turn on your TV and use the input/source button to select the input used in the previous step. It may take a few minutes for the first set-up screen to appear while the box is initializing.




Step 2: Pairing with your T3200M modem

2a

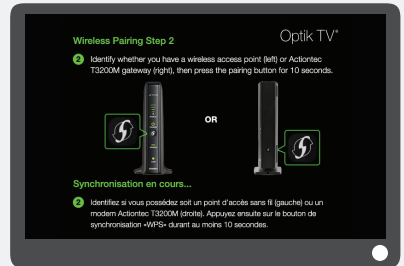
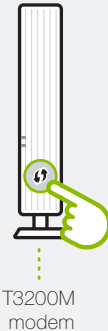
When the screen on the right appears, press the **OK** button on your Optik TV remote.



2b

When the screen on the right appears, press and hold the  button on the front of your T3200M modem for **10 seconds** and let go. The Wi-Fi light on the modem will flash indicating that pairing is in progress. Pairing may take a few minutes.

Press and hold for 10 seconds



2c

A message will appear indicating that pairing was successful. You will notice green wireless connection bars now appear on your wireless box. You are now ready to watch TV, use your Optik TV remote to get started.

For additional support, visit telus.com/selfinstall or call **310-MYTV (6988)**.

