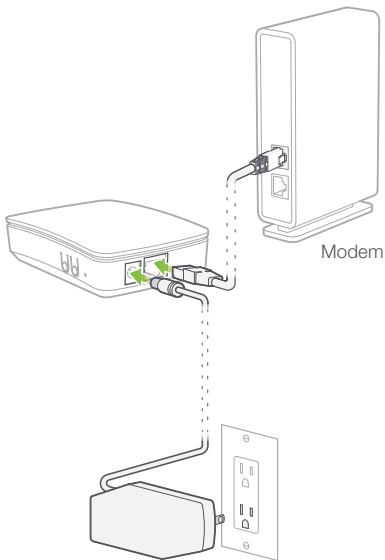


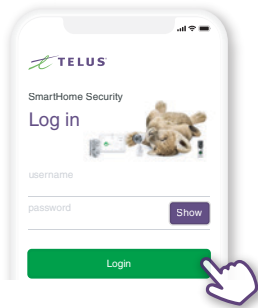
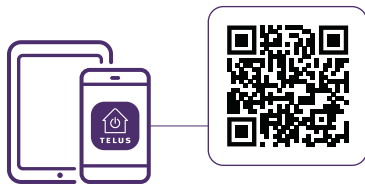
# Quick Start Guide

## 1 Set up Automation Hub



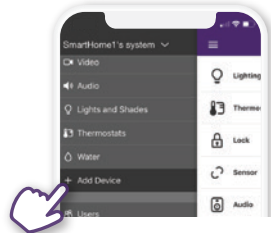
Connect the Automation Hub to your modem with the Ethernet cable, then plug in power.

## 2 Get the TELUS SmartHome App



Download the TELUS SmartHome app, then log in with your My TELUS credentials.

## 3 Add Automation and Video Devices



Visit [telus.com/SmartHomeGuides](https://telus.com/SmartHomeGuides) for instructions on installing your devices.

You can add them to your account by selecting **+ Add Device** from the main menu in the app.

### Additional Support



#### Video tutorials

For step-by-step installation videos, visit [telus.com/SmartHomeTutorials](https://telus.com/SmartHomeTutorials).



#### Speak to an expert

Our customer support agents are available 24/7 at 1-855-255-8828.