

TELUS SmartHome Security features:

- Manage your system remotely (e.g. arm and disarm your system)
- View up-to-date information on your home, such as what doors or windows are open
- Manage your notifications
- View & control video & automated devices

*Note: Before you begin, please wait for your technician to generate your Welcome Letter, which will be sent as an email during your install.

Mobile Device Setup Guide

1. DOWNLOAD THE FREE TELUS SMARTHOME APP



- To login, you will need to open your Welcome Letter. This will prompt you to create a login

2. ARMING REMINDER BY A SET TIME

- By default you will receive a daily email by a set time if you have not armed your system
- To adjust this: Menu > Notifications > Arming Reminder > Enter New Time > Save
- Another way to receive your reminder is through Push Notifications
- To enable this: Menu > Notifications > Toggle On Push Notifications > Arming Reminder > Recipients > Remove Your Email > +Add Recipients > Select Push device > Close > Save

3. ARMING REMINDER BY YOUR PHONE'S LOCATION

- To receive an arming reminder when you are more than 3KM away from your home
- To enable: Menu > Geo-Services > Toggle to ON. Menu > Notifications > Arming Reminder > Select When People Cross a Geo-Fence > Select Your Device > Save

Web Setup Guide

1. VERIFYING YOUR EMAIL

- Once you receive your Welcome Letter, you will be prompted you to use the Set-Up Wizard. This will ask you to confirm your email
- Your password will be setup at this time and you will use this to login at **Web Portal**: telus.com/smarthomelogin

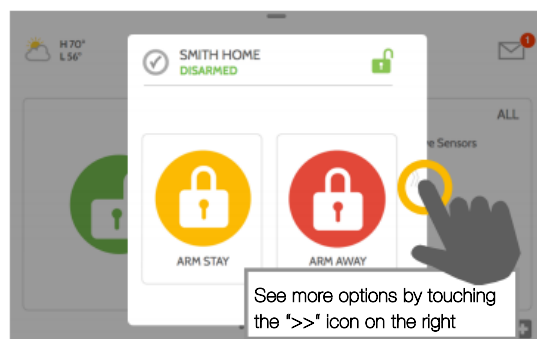
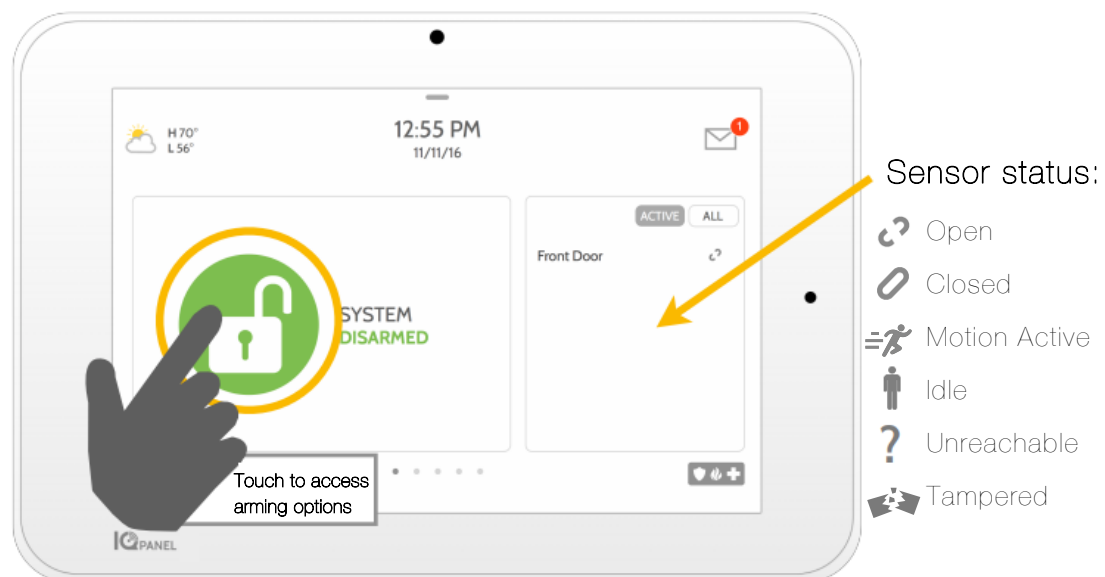
2. CREATE SMS/PUSH CONTACTS

- Allowing real-time alerts to your mobile devices via SMS or push notifications
- For SMS notifications: Add your mobile number on the **Web Portal** > Users >  > +ADD Mobile Number > Save
- For Push notifications: you must use your TELUS SmartHome App on a mobile device: Menu > Notifications > Toggle on Push Notifications > Toggle on Push

3. SETUP RULES FOR AUTOMATION DEVICES

- Enable smart schedules, event-triggered rules or scheduled automation so that you are getting the most out of your Smart Home system
- Examples of automation devices: cameras, smart thermostats, smart door locks, smart garage openers, smart light bulbs and smart plugs
- Configure rules on **Web Portal** > Automation > + Add New Rule

Arming



Arming Options:

Quickly choose from "stay" or "away"



Arming Stay- Arms doors and windows only



Arming Away- Arms doors, windows and motions



Additional Options- View additional arming options by touching ">>>" icon on the right side



Additional Arming Options:

Select these options before choosing your arming type

Bypass- Touch the circle next to a sensor to bypass it during the arming sequence. All open sensors will automatically bypass when arming

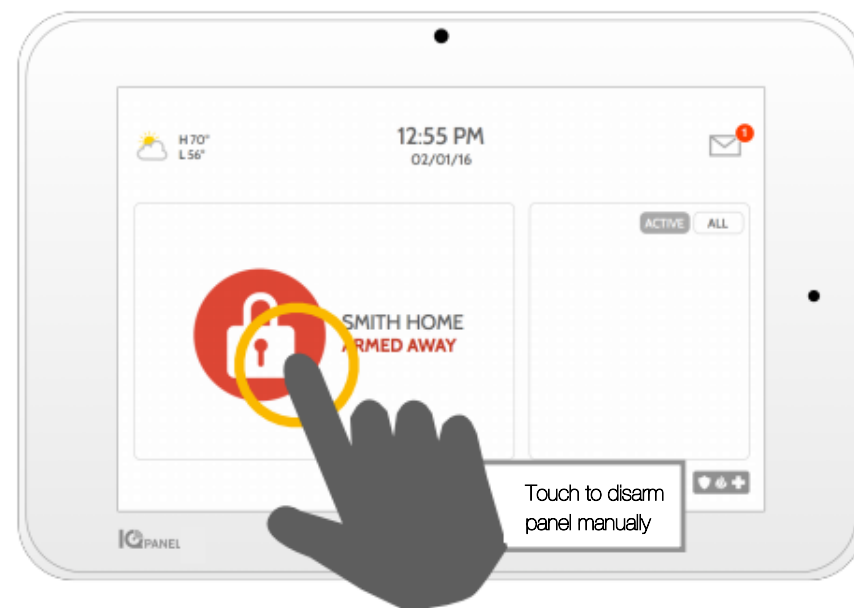


Exit Sounds- The panel beeps as the timer counts down. Silence these beeps before you choose the arming type.



Entry Delay- The panel will give you time to disarm once a "delay door" has been opened. Turn this off with a touch

Disarming



Disarming your system

When your system is armed, there are multiple ways to disarm

Disarming Manually

To manually disarm your panel, touch the icon in the center of the screen. You will be prompted to enter a valid code. Failure to enter a valid code with the time required will trigger the alarm.

When someone manually disarms the panel the built in camera will take a photo and save it on the camera page along with the date, time and name of the user.



Disarming Remotely

To remotely disarm your panel, login to your mobile app and touch the "disarm" icon.

Arming Remotely

To remotely arm your panel, login to your mobile app and touch the