



## Indoor Wi-Fi Security Camera

# Installation Guide

ADC-V522IR

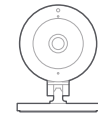
### Before You Start



Watch the installation video at [telus.com/IndoorCamera](https://telus.com/IndoorCamera) or scan the QR code.



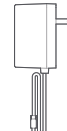
#### What's in the box?



Indoor Camera  
ADC-V522IR



Mounting  
Plate



Power  
Supply



Drywall  
Anchors



Wall  
Screws



#### You'll need:



Smartphone or Tablet



2.5 Mbps Upload Wi-Fi

#### Optional



Screwdriver



Drill



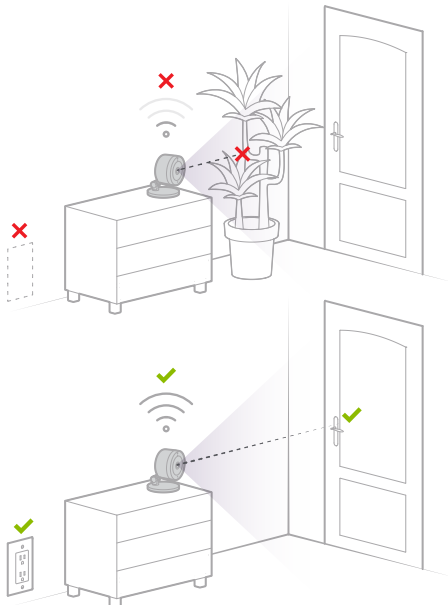
Pencil



6mm (1/4 inch) Drill Bit

1

### Select a Location

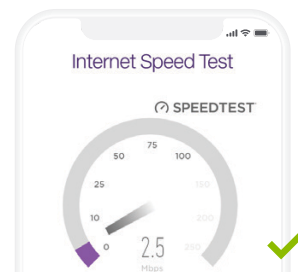


#### NOTE

For wall mounting installation see Steps 8-10.

2

### Check Your Wi-Fi Speed at Location



The Indoor Camera requires a minimum of 2.5 Mbps upload speed to operate. In a browser on your smartphone visit [telus.com/speedtest](https://telus.com/speedtest) to determine the Internet speed at your chosen location.

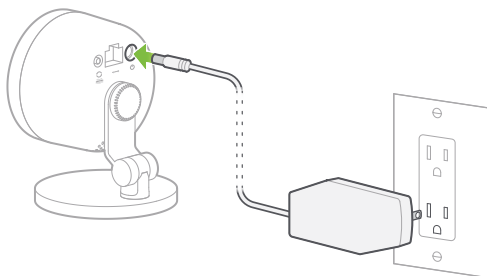


#### No Wi-Fi?

If you are unable to find a location with adequate Wi-Fi coverage, please contact TELUS for assistance.

3

## Turn On Camera



Flashing

Flashing

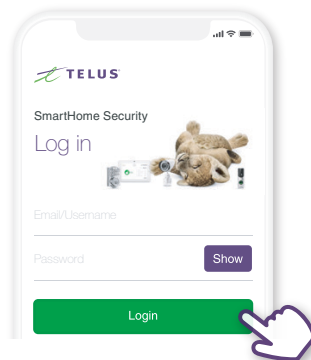
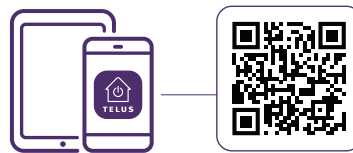
**LED not flashing white?**

Press and hold the WPS/RESET button for 6 seconds until the light starts flashing white.



4

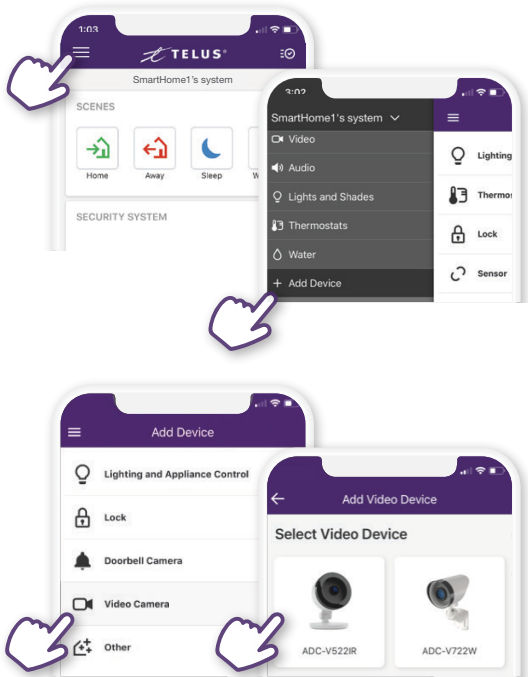
## Get the TELUS SmartHome App



Download the TELUS SmartHome app, then log in with your My TELUS credentials.

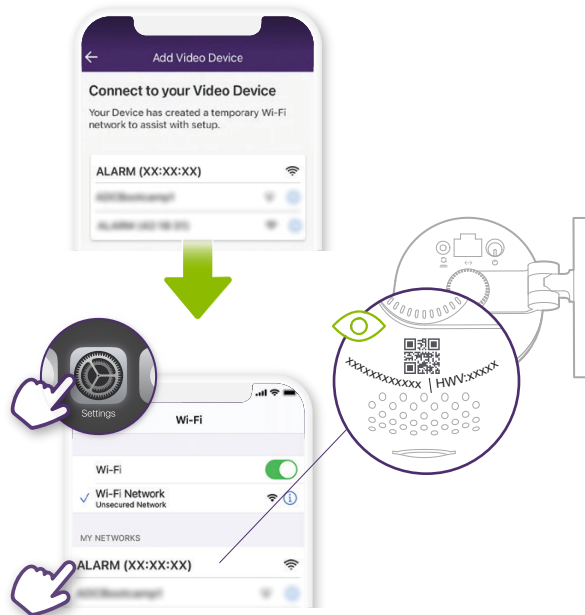
5

## Add Indoor Camera to Your Account



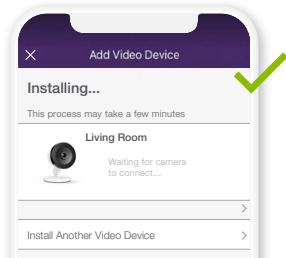
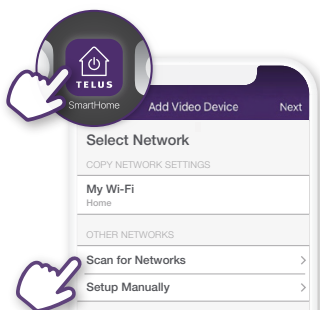
6

## Connect to Temporary Wi-Fi Network



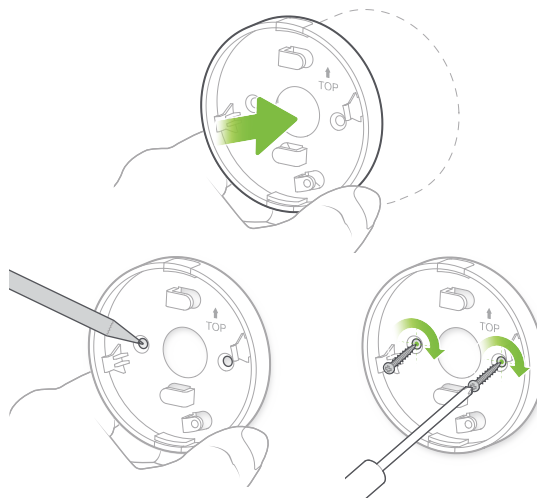
7

## Follow Steps in App



8

## Optional: Mount Wall Plate



### TIP

You can also attach the mounting bracket by drilling holes and using the drywall anchors provided.



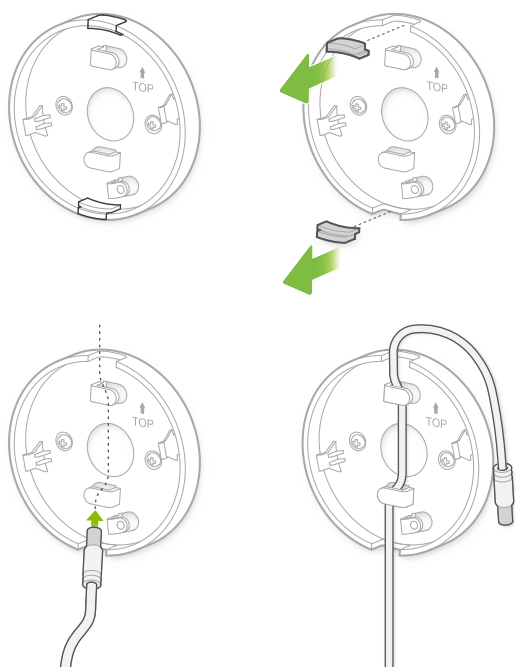
6mm (1/4 inch) Drill Bit



Drywall Anchors

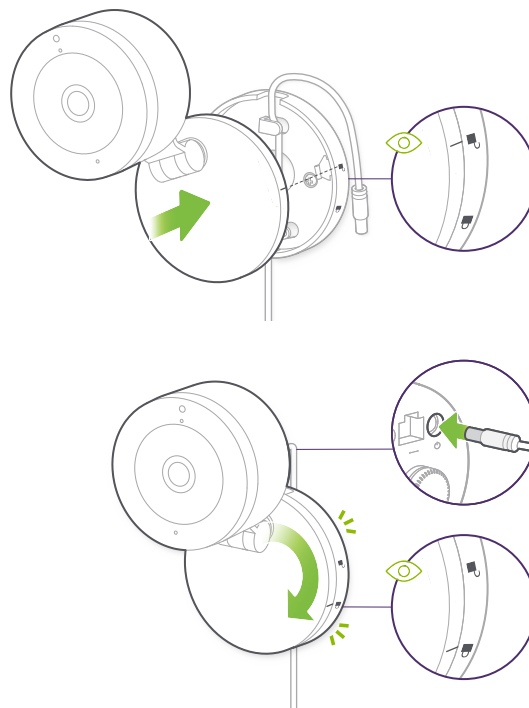
9

## Optional: Route Cable



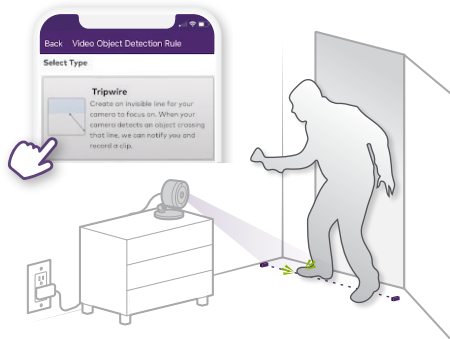
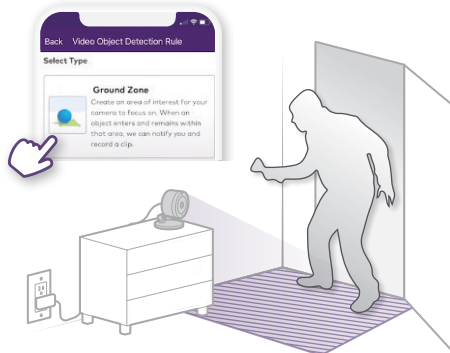
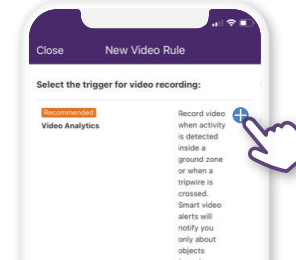
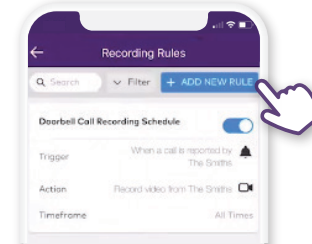
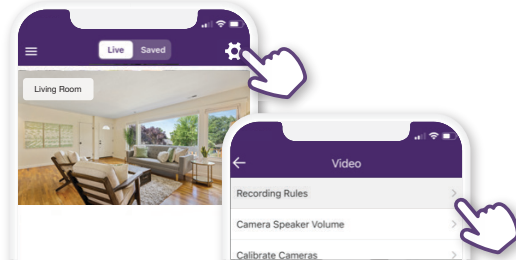
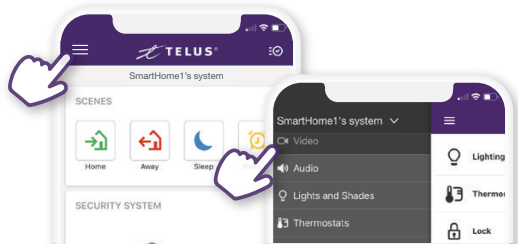
10

## Optional: Attach Camera

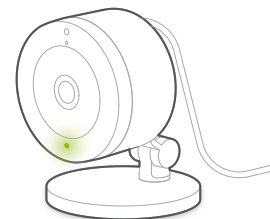


11

## Customize Smart Video Alerts



Nice Work, You're All Done!









**Additional Support**

Our customer support agents are available 24/7  
at 1-855-255-8828.

For additional installation instructions, videos and  
troubleshooting, please visit [telus.com/IndoorCamera](https://telus.com/IndoorCamera)  
or scan the QR code below.



## LED Reference Guide

Off		Power off
Solid		Connected to TELUS SmartHome
Flashing		Local network connection
Flashing		Factory reset
Solid		No local or Internet connection
Flashing		Power on, camera booting
Flashing		WPS mode
Flashing		Wi-Fi access point mode

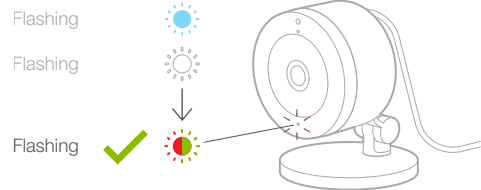
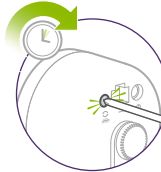
## Troubleshooting (Factory Reset)



### NOTE

If you have issues connecting the camera to a TELUS account, power cycle the camera (unplug the power cable from the camera and plug it back in to restore power). If issues persist, reset the camera to factory defaults.

15 seconds



### IMPORTANT

If the camera was previously installed to a TELUS account, it will need to be deleted before it can be installed again.