

## Design Offices München Atlas

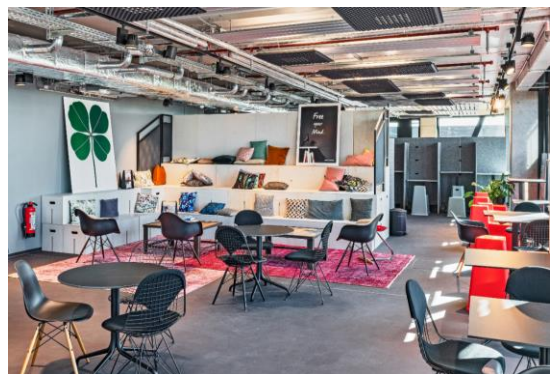
# Conference & Event Price List

(subject to change)

As a pioneer for new work Design Offices offers ideal spaces for dynamic working.

The innovative room concepts provide variable furnishings for a range of scenarios, writeable walls and comprehensive toolboxes with presentation materials. Our concept not only enables the realization of future-oriented, creative methods, but also classic formats in contemporary look.

What's more, Design Offices offers the perfect setting for event formats - whether as networking event with talks, staff party, or after work party. Here, you will find the most exciting room options.



**We are your consultants for dynamic event formats in new work style!**

You know the target for your event - we have the means for the perfect realization!

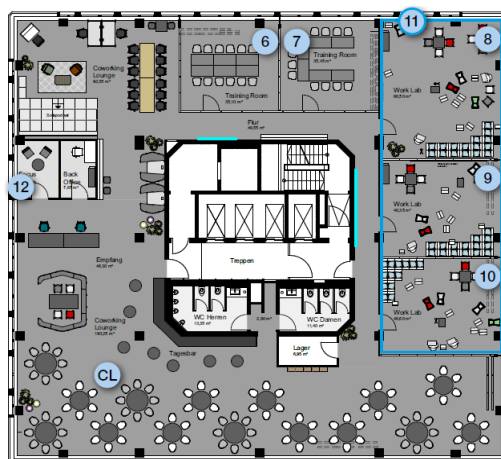
Whether design thinking, classic training or event formats, in the Meet & Move Room or the unique Work Lab, you'll find the just the right setting.

# Conference Rooms and Event Areas

6th floor



12th floor



Conference room		Area	L x W	Height	Room rental for a full day* from
		m²	m	m	€ / gross
Meet & Move Room 6_I	1	46	7,6x6,3	3,18	730,—
Fireside Room 6_I	2	27	4,9x5,5	3,18	530,—
Day Office	3 4	13		3,18	300,—
Work Lab 6_I	5	101	13,6x7,6	3,18	1.350,—
Training Room 12_I	6	35	5,8x6,1	3,18	630,—
Training Room 12_II	7	35	5,8x6,1	3,18	630,—
Work Lab 12_I	8	67	8,9x7,6	3,18	1.100,—
Work Lab 12_II	9	47	6,1x7,6	3,18	780,—
Work Lab 12_III	10	47	6,1x7,6	3,18	780,—
Work Lab 12_I+II		114	15x7,6	3,18	1.880,—
Work Lab 12_II+III		94	13,4x7,6	3,18	1.560,—
Work Lab 12_L	11	160	21x7,6	3,18	2.660,—
Focus Room 12_I	12	10		3,18	250,—
Coworking Lounge	CL	231		3,18	price upon request
Coworking Lobby	L	289		3,18	price upon request
Terrasse I / Terrasse II	T1/T2				price upon request

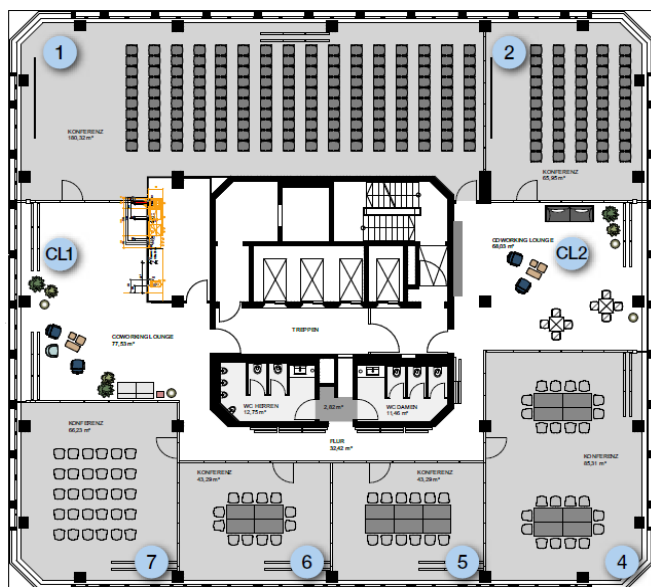
\* until 6pm

All rooms at the Design Offices can also be booked for evening events, or for several days at a time.

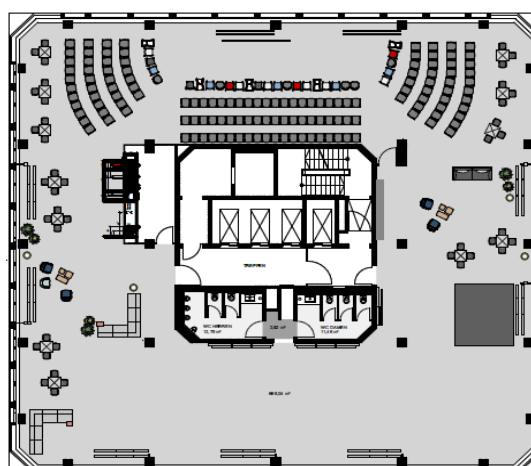
All prices are gross and include the currently applicable statutory VAT at 19%. The GTC of Design Offices apply.

## Conference Rooms and Event Areas

13<sup>th</sup> floor



Total area 13<sup>th</sup> floor



Conference room	Area	L x W	Height	Room rental for a full day* from
	m <sup>2</sup>	m	m	€ / gross
Training Room 13_I 1	180	22,6x7,7	3,28	2.500,–
Training Room 13_II 2	66	7,6x8,9	3,28	1.000,–
Arena 13 3	246	30,2x8	3,28	price upon request
Training Room 13_III 4	85	7,7x7,6	3,28	1.230,–
Training Room 13_IV 5	43	7,4x5,9	3,28	680,–
Training Room 13_V 6	43	7,4x5,9	3,28	680,–
Training Room 13_VI 7	66	8,9x7,6	3,28	1.000,–
Coworking Lounge 8/9	77/68		3,28	price upon request
Total area 13th floor mit 360° panoramic view	662		3,28	price upon request

\* until 6pm

All rooms at the Design Offices can also be booked for evening events, or for several days at a time.

All prices are gross and include the currently applicable statutory VAT at 19%. The GTC of Design Offices apply.

## Basic Equipment & Services



### Basic Equipment

- High quality lobby for visitor reception
- Stylish communal areas
- Pads and pens

### Basic Equipment in the Rooms

- High-speed WLAN
- Flat screen with HDMI and VGA connection or projector / projection screen (Training Room)
- Adapter for Apple devices
- Writable walls/blackboards/whiteboards/pin boards/flip charts (depending on room setup)
- Technology trolley with facilitator's basic presentation equipment (toolbox)
- Natural light (can be darkened) , air-conditioning / ceiling panel cooling system / ventilation system

**Data line:** dedicated bandwidth on request

### Additional Equipment | Technology

	gross / item
Projector (included in Training Room)	€ 70,00
Additional flip chart (including 10 sheets, pens)	€ 30,00
Flip chart block	€ 12,00
Metaplan board including materials	€ 30,00
Facilitator's presentation kit	€ 30,00
Other technology possible on request	

### Office Services

	gross / item
Writing set (A5 pad, pen)	€ 3,00
Photocopying/Printing - Black/White A4	€ 0,20
Photocopying/Printing - Black/White A3	€ 0,40
Photocopying/Printing - Colour A4	€ 0,60
Photocopying/Printing - Colour A3	€ 0,95
Scanning A4 or A3	€ 0,25
Fax per page, A4	€ 0,15
Telephone (per unit)	€ 0,60

### Other Services

	gross / item
Manager (on-site event support)	65,00 € *
Coordinator (on-site event support)	35,00 € *
Concierge service	on request

\*only for weekend events until 11:00 pm; for events Mon.-Sun. between 11:00 pm and 6:00 am plus 25% nightwork extra pay per hour.  
External service personnel will be charged according to expenditure.



## Conference Flat Rates

With a conference flat rate (at least 12 persons), you can book a complete package, allowing you to easily estimate the cost of your event and leaving us to take care of every tiny detail.

The room set-up\*, including the basic equipment, is included in every flat rate.

	Standard	Premium	All-In
	Full day	Full day	Full day
Room rental* incl. technology	✓	✓	✓
Welcome coffee			✓
Mid-morning break	✓	✓	✓
Buffet lunch	✓	✓	✓
Afternoon break	✓	✓	✓
Soft drinks in the room, 0.33 l	✓✓		
Soft drinks with lunch, 0.33 l	✓		
Flat rate for drinks Premium **		✓	
Flat rate for drinks All-In ***			✓
Fruit bowl			✓
Snack box			✓
<b>Prices for full day from</b>			
(gross)	<b>79,00 €</b>	<b>89,00 €</b>	<b>99,00 €</b>

### Conference flat rate "Standard"

gross

Includes coffee breaks (mid-morning and afternoon) with filter coffee, tea, a range of different snacks and a , buffet lunch, 2 softdrinks in the room, 1 softdrink with lunch

**Full day flat rate "Standard" (up to 8 hours, until 6 pm):** per person from 79,00 €

### Conference flat rate "Premium"

Includes coffee breaks (mid-morning and afternoon) with filter coffee, tea, a range of different snacks, a buffet lunch, flat rate for drinks Premium

**Full day flat rate "Premium" (up to 8 hours, until 6 pm):** per person from 89,00 €

### Conference flat rate "All-In"

Includes coffee breaks (mid-morning and afternoon) with filter coffee, tea, a range of different snacks, a buffet lunch, flat rate for drinks All-In, fruit bowl, snack box

**Full day flat rate "All-In" (up to 8 hours, until 6 pm):** per person from 99,00 €

### Spice up your breaks, or conclude the evening with fine finger food!

For your coffee breaks and lunch we offer a selection of tasty snacks and desserts, and for the evening a wide range of finger food.

We are happy to provide a detailed offering tailored to meet your catering preferences

\* Adequate space is provided for the size of the group. A larger space is available at an additional cost.

\*\* Flat rate for drinks Premium incl. softdrinks, mineralwater, filter coffee, tea

\*\*\* Flat rate for drinks All-In incl. softdrinks, mineralwater, energy drinks, coffee specialties, tea

## Drinks & Powersnacks



Drinks*			gross
Beer	different sorts	0,33 l	3,90 €
fritz-kola	kola, kola no sugar	0,33 l	3,30 €
fritz-spritzer	Organic Rhubarb Spritzer, Organic Apple Juice Spritzer	0,33 l	3,30 €
fritz-limo	Apple-Cherry-Elderberry, Honeydew, Lemon, Orange	0,33 l	3,30 €
Grober Schnitzer	Apple Schnitz-Spritzer, Red Currant	0,33 l	3,30 €
Dietz Teaz	Passion Fruit Rooibos Tea, Peppermint Matcha Tea etc.	0,33 l	3,30 €
Fountain of Youth Coconut Water		0,33 l	5,30 €
Water Aqua Monaco	still and sparkling	0,33 l	2,60 €
Water Aqua Monaco	still and sparkling	0,75 l	6,00 €
Red Bull	Energy Drink, sugarfree	0,25 l	3,80 €
acáo	Quince and Lemon, Passionfruit Ginger, Pink Grapefruit	0,25 l	3,80 €
Club-Mate		0,33 l	3,30 €

### Hot Drinks

Café Crème / Espresso			2,90 €
Cappuccino			3,30 €
Latte Macchiato			3,70 €
Pot of filter coffee		0,85 l	17,00 €
samova teas			2,50 €

### Wine/Sparkling Wine

Cabernet Dorsa (red), dry		0,75 l	23,80 €
Pinot Grigio (white), dry		0,75 l	20,00 €
Riesling "S" Sonnenmorgen, dry		0,75 l	23,80 €
Riesling Sparkling Wine, classic bottle fermentation, dry		0,75 l	24,90 €
Marx Secco, dry		0,75 l	20,30 €

We can recommend other wines on request.

### Powersnacks:

We offer you and your guests a wide range of Powersnacks.

You can choose from fine cereal bars, nut mixes, chocolate bars and chips.

We are happy to provide a detailed offering tailored to meet your catering preferences.

\* object to change

All prices are gross and include the currently applicable statutory VAT at 19%. The GTC of Design Offices apply.