

Location portfolio

# Nuremberg Hauptbahnhof

**DESIGN OFFICES**



# Ground floor

Meeting & conference spaces



|   |                     | m <sup>2</sup> | L x W x H in metres | New Work | U-shaped | Parliamentary | Theatre | Block | Circle | Banquet |
|---|---------------------|----------------|---------------------|----------|----------|---------------|---------|-------|--------|---------|
| 1 | Arena               | 226            | 12.0 x 19.0 x 2.9   | 100      |          |               | 120     |       |        |         |
| 2 | Meet & Move Room I  | 30             | 5.7 x 5.5 x 2.9     |          |          |               |         | 6     |        |         |
| 3 | Meet & Move Room II | 38             | 7.6 x 5.5 x 2.9     |          |          |               |         | 8     |        |         |
| 4 | Fireside Room II    | 22             | 4.0 x 5.5 x 2.9     |          |          |               |         | 8     |        |         |

# 1st floor

Meeting & conference spaces



**1** Eatery

# 1st floor


Meeting & conference spaces



|          | m <sup>2</sup> | L x W x H in metres | New Work       | U-shaped | Parliamentary | Theatre | Block | Circle | Banquet |
|----------|----------------|---------------------|----------------|----------|---------------|---------|-------|--------|---------|
| 1 Eatery | 318            | 22.0 x 13.5 x 3.0   | Bistro seating |          |               |         |       |        |         |

# 2nd floor

Meeting & conference spaces

 With flexible walls

-  Training Room I
-  Training Room II
-  Training Room III
-  Training Room IV
-  Training Room V
-  Arena II



# 2nd floor

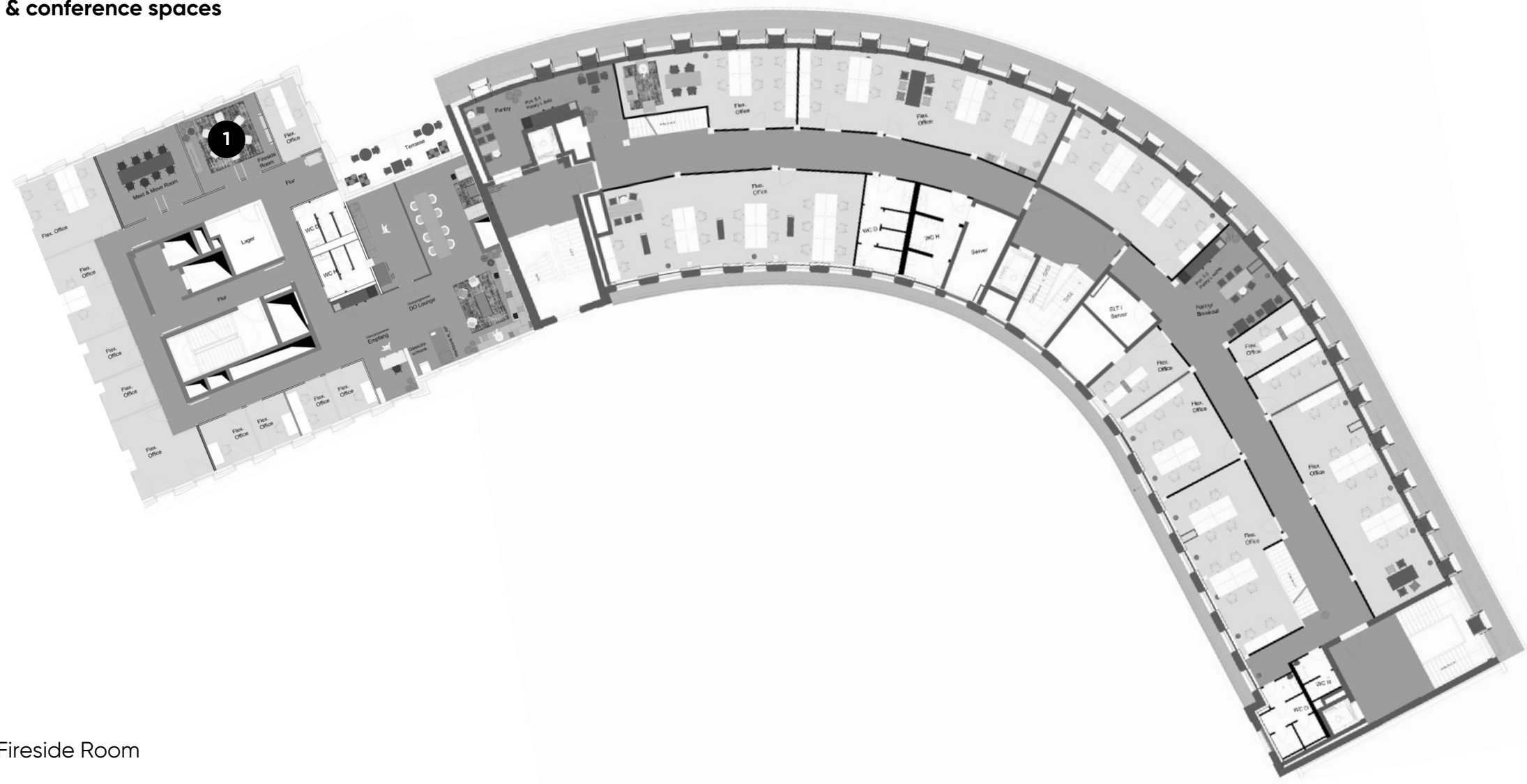
Meeting & conference spaces



|   |                   | m <sup>2</sup> | L x W x H<br>in metres | New Work | U-shaped | Parliamentary | Theatre | Block | Circle | Banquet |
|---|-------------------|----------------|------------------------|----------|----------|---------------|---------|-------|--------|---------|
| 1 | Training Room I   | 64             | 9.7 x 5.7 x 3.1        | 42       | 20       | 24            | 60      | 18    | 25     |         |
| 2 | Training Room II  | 35             | 5.8 x 5.7 x 3.1        | 15       | 10       | 12            | 15      | 12    | 12     |         |
| 3 | Training Room III | 47             | 9.0 x 5.7 x 3.1        | 30       | 16       | 18            | 40      | 14    | 18     |         |
| 4 | Training Room IV  | 62             | 11.0 x 5.5 x 3.1       | 40       | 18       | 24            | 60      | 18    | 24     |         |
| 5 | Training Room V   | 55             | 9.6 x 5.6 x 3.1        | 32       | 18       | 20            | 45      | 16    | 20     |         |
| 6 | Arena II          | 321            | 23.0 x 13.5 x 3.1      | 180      |          | 80            | 240     |       |        |         |

# 5th floor

Meeting & conference spaces



1 Fireside Room



# 5th floor

Meeting & conference spaces



1

|               | m <sup>2</sup> | L x W x H in metres | New Work | U-shaped | Parliamentary | Theatre | Block | Circle | Banquet |
|---------------|----------------|---------------------|----------|----------|---------------|---------|-------|--------|---------|
| Fireside Room | 27             | 5.4 x 4.9 x 3.1     |          |          |               |         | 6     |        |         |