

Cognitive Services

Jani Nevalainen

Technical Evangelist @ Microsoft

www.j4ni.com

Twitter: @jn1974

Cognitive Services

Give your solutions
a human side

Microsoft Cognitive Services preview



Vision

From faces to feelings, allow your apps to understand images and video



Speech

Hear and speak to your users by filtering noise, identifying speakers, and understanding intent



Language

Process text and learn how to recognize what users want



Knowledge

Tap into rich knowledge amassed from the web, academia, or your own data



Search

Access billions of web pages, images, videos, and news with the power of Bing APIs

Cognitive Services

Give your solutions
a human side

Microsoft Cognitive Services preview



Vision

Computer Vision | Emotion | Face | Video |
Content Moderator



Speech

Custom Recognition | Speaker Recognition |
Speech



Language

Bing Spell Check | Language Understanding |
Linguistic Analysis | Text Analytics | Web Language Model |
Translator Text and Speech



Knowledge

Academic Knowledge | Entity Linking |
Knowledge Exploration | Recommendations



Search

Bing Auto Suggest | Bing Image Search | Bing News Search |
Bing Video Search | Bing Web Search

Why Microsoft Cognitive Services?

Easy

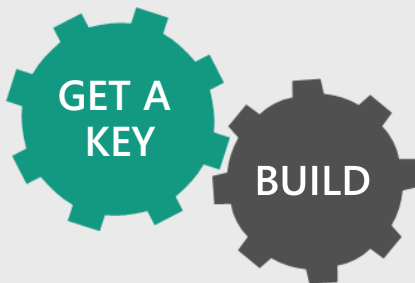
Roll your own with REST APIs
Simple to add: just a few lines of code required

Flexible

Integrate into the language and platform of your choice
Breadth of offerings helps you find the right API for your app

Tested

Built by experts in their field from Microsoft Research, Bing, and Azure Machine Learning
Quality documentation, sample code, and community support



GitHub



Vision



Computer Vision API

Distill actionable information from images



Face API

Detect, identify, analyze, organize, and tag faces in photos



Emotion API

Personalize experiences with emotion recognition



Video API

Analyze, edit, and process videos within your app



Content Moderator

Automated image, text, and video moderation

Speech



Bing Speech API

Convert speech to text
and back again, and
understand its intent



Speaker Recognition API

Give your app the ability
to know who's talking



Custom Recognition Intelligent Service

Fine-tune speech
recognition for anyone,
anywhere

Language



Bing Spell Check API

Detect and correct spelling mistakes within your app



Web Language Model API

Leverage the power of language models trained on web-scale data



Linguistic Analysis API

Easily parse complex text with language analysis



Language Understanding Intelligent Service

Teach your apps to understand commands from your users



Text Analytics API

Detect sentiment, key phrases, topics, and language from your text



Translator

Easily perform speech and text translation



Knowledge



Academic Knowledge API

Explore relationships
among academic papers,
journals, and authors



Knowledge Exploration Service

Add interactive search
over structured data to
your project



Entity Linking Service

Contextually extend
knowledge of people,
locations, and events



Recommendations API

Provide personalized
product
recommendations for
your customers



Search



Bing Web Search API

Connect powerful
search to your apps



Bing Autosuggest API

Give your app
intelligent autosuggest
options for searches



Bing Image Search API

Bring advanced
image and metadata
search to your app



Bing Video Search API

Trending videos,
detailed metadata,
and rich results



Bing News Search API

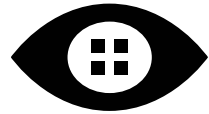
Link your users to
robust and timely
news searches

Vision



From faces to feelings, allow your
apps to understand images and video

Computer Vision | Emotion | Face |
Video | Content Moderator



Computer Vision APIs

Analyze an image

Understand content within an image

OCR

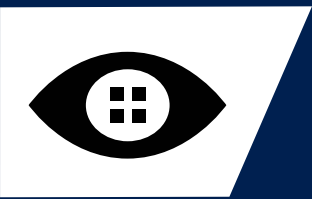
Detect and recognize words within an image

Generate thumbnail

Scale and crop images, while retaining key content

Recognize Celebrities

Thanks to domain specific models, ability to recognize 200K celebrities from business, politics, sports and entertainment around the World



Analyze image



Type of image

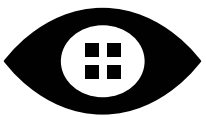
Clip Art Type	0 Non-clipart
Line Drawing Type	0 Non-Line Drawing
Black & White Image	False

Content of image

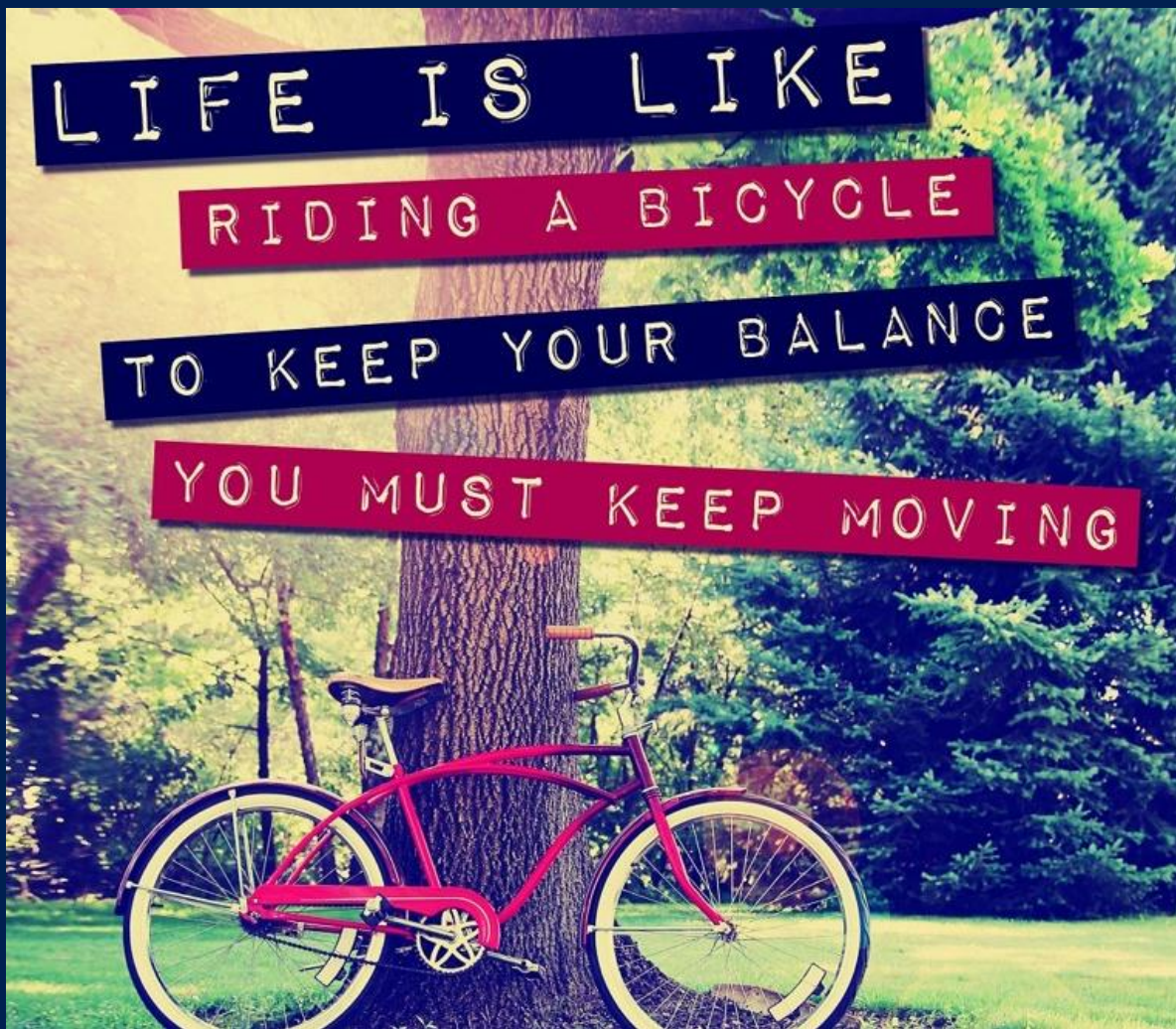
Categories	[{ "name": "people_swimming", "score": 0.099609375 }]
Adult Content	False
Adult Score	0.18533889949321747
Faces	[{ "age": 27, "gender": "Male", "faceRectangle": { "left": 472, "top": 258, "width": 199, "height": 199 } }]

Image colors

Dominant Color Background	White
Dominant Color Foreground	Grey
Dominant Colors	White
Accent Color	



OCR



Good at

Scanned documents

Photos with text

Fine grained location information,

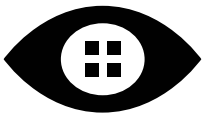
Life
Riding
To
You

TC

YC

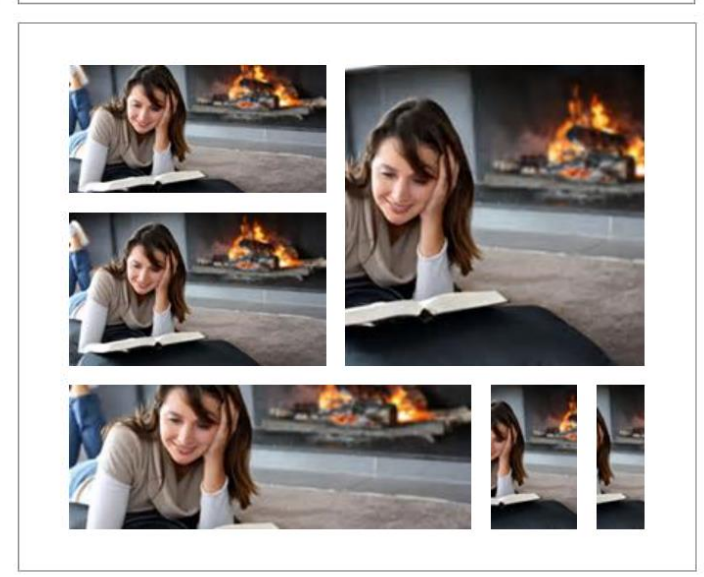
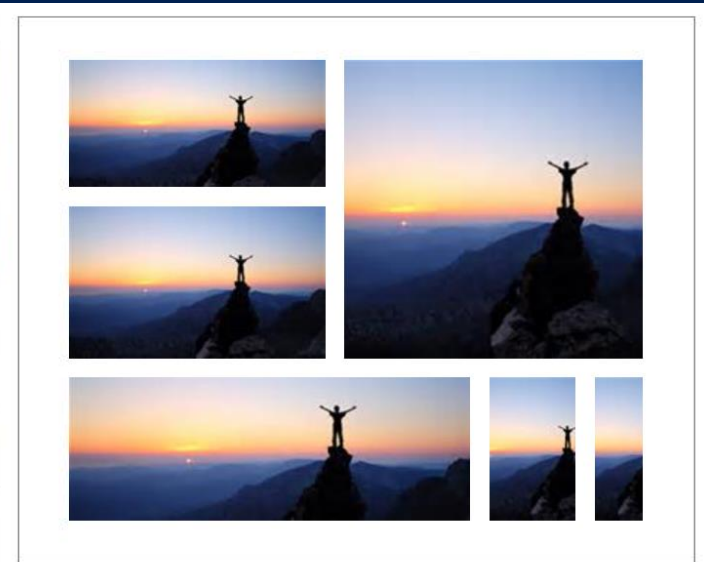
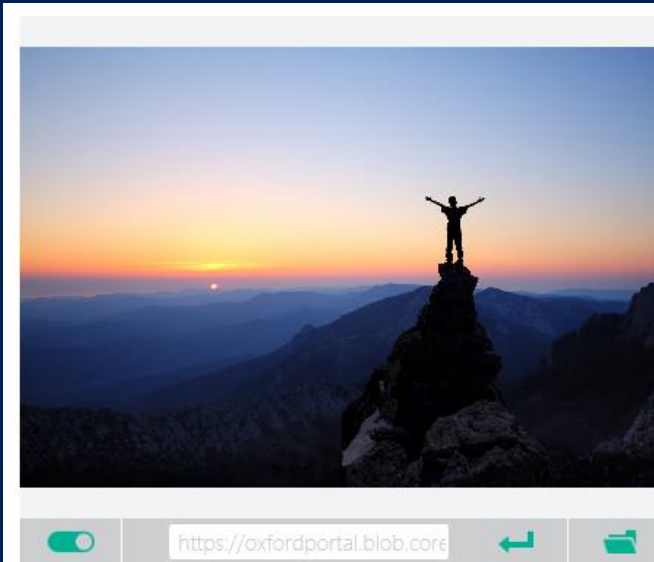
```
JSON:
{
  "language": "en",
  "orientation": "up",
  "res": 1024,
  "boundingBox": "41,77,918,440",
  "lines": [
    {
      "boundingBox": "41,77,723,89",
      "words": [
        {
          "boundingBox": "41,102,225,64",
          "text": "LIFE"
        },
        {
          "boundingBox": "356,89,94,62",
          "text": "IS"
        },
        {
          "boundingBox": "539,77,225,64",
          "text": "LIKE"
        }
      ]
    }
  ]
}
```

...



Smart thumbnail

Smart cropping **off**





Emotion APIs

Recognize emotions

Detect emotions based on facial expressions
in photos and videos



Emotion APIs



Face detection

```
"faceRectangle": {"width": 193,  
                  "height": 193,  
                  "left": 326,  
                  "top": 204} ...
```

Emotion scores

```
"scores": { "anger": 5.182241e-8,  
            "contempt": 0.0000242813,  
            "disgust": 5.621025e-7,  
            "fear": 0.00115027453,  
            "happiness": 1.06114619e-8,  
            "neutral": 0.003540177,  
            "sadness": 9.30888746e-7,  
            "surprise": 0.9952837}
```




Face APIs

Face detection

Detect faces and their attributes within an image

Face verification

Check if two faces belong to the same person

Similar face searching

Find similar faces within a set of images

Face grouping

Organize many faces into groups

Face identification

Search which person a face belongs to



Face APIs



Detection

```
"faceRectangle": {"width": 193, "height": 193, "left": 326, "top": 204}
```

...

Feature attributes

```
"attributes": { "age": 42, "gender": "male",  
  "headPose": { "roll": "8.2", "yaw": "-37.8", "pitch": "0.0" }}
```

Grouping



Identification

Jasper Williams



Video APIs

Stabilization

Smooth and stabilize shaky video

Face detection and tracking

Detect and track faces in videos

Motion detection

Detect when motion occurs



Stabilization

The Stabilization API provides automatic video stabilization and smoothing for shaky videos

This API uses many of the same technologies found in Microsoft Hyperlapse

Best For:

Small camera motions, with or without rolling shutter effects
(e.g., holding a static camera, walking with a slow speed)





Face detection and tracking

High precision face location detection and tracking

Can detect up to 64 human faces in a video (no smaller than 24x24 pixels)

Detected and tracked faces are returned with coordinates and a Face ID to track throughout the video



Time (sec)	Face ID	x, y	Width, height
0	0	0.59, 0.23	0.09, 0.16
0	1	0.38, 0.15	0.07, 0.12
1	0	0.54, 0.25	0.09, 0.15
1	1	0.23, 0.18	0.07, 0.12



Motion detection

Indicates when motion occurs against a fixed background (e.g., surveillance video)

Trained to reduce false alarms, such as lighting and shadow changes



Start time	End time	In region
1.9	3.6	0
5.2	15.1	0



Content Moderator

Protect your brand and users with automated image, text, and video moderation services and human review tools

Image moderation

Automatically evaluate images for offensive and unwanted content across differing file types—including altered images.

Text Moderation

Detect profanity in more than 100 languages and match text against your custom lists automatically.

Video Moderation (in Azure Media Services)

Enable the proactive detection of adult content in videos with moderation handled in the cloud by Azure Media Services.

Speech



Hear and speak to your users by filtering noise, identifying speakers, and understanding intent

Custom Recognition | Speaker Recognition | Speech

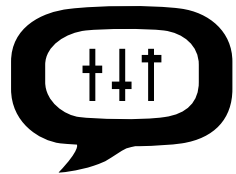


Bing Speech API

Voice recognition (speech to text)
Converts spoken audio to text

Voice output (text to speech)
Synthesize audio from text

Speech intent recognition
Convert spoken audio to intent



Custom Recognition

Customize both language
and acoustic models

Tailor speech recognition to your app and environment



Custom Recognition Intelligent Service

Create custom language models for the vocabulary of the application

Adapt acoustic models to better match the expected environment of the application's users

Deploy to a custom endpoint and access from any device

Record
audio

Transcribe

Adapt

Deploy



Speaker recognition API

Speaker verification

Check if two voices are the same

Speaker identification

Identify who is speaking



Speaker recognition APIs

Enrollment

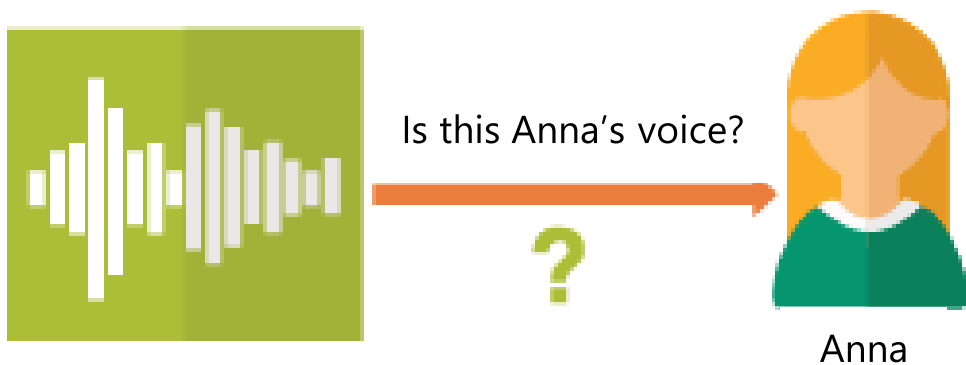
Create a unique voiceprint for a profile

Recognition

After enrolling one or more voices, identify who is speaking from an audio clip

Verification

Confirm if a voice belongs to a previously enrolled profile

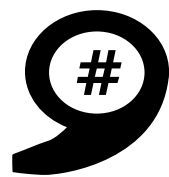


Language



Process text and learn how to recognize what
users want

Bing Spell Check | Language Understanding |
Linguistic Analysis | Text Analytics | Web Language Model |
Translator Text and Speech



Bing spell check APIs

State-of-the-art cloud based spelling algorithms
Recognizes a wide variety of spelling errors

Recognize name errors and homonyms in context
Difficult to spot errors that use the context of the words around them

Updates over time
Support for new brands and coined expressions as they emerge



Bing spell check APIs



A new service from **microso ft!**

Microsoft



Director **stephen**
Spielberg should use it
in the next AI movie!

Steven



Our service is like **lyft**
for word processing!

Lyft

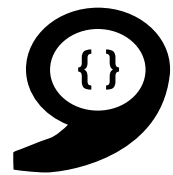
Check a single word or a whole sentence

"Our engineers developed this **four** you!"

Corrected Text: "four" → "for"

Identify errors and get suggestions

```
"spellingErrors": [  
  {  
    "offset": 5,  
    "token": "gona",  
    "type": "UnknownToken",  
    "suggestions": [  
      { "token": "gonna" }  
    ]  
  }  
]
```

Language Understanding

Understand what your users are saying
Use pre-built Bing and Cortana models or create your own



Language understanding intelligent service

Reduce labeling effort with interactive featurizing

Use visualizations to gauge performance and improvements

Leverage speech recognition with seamless integration

Deploy using just a few examples with active learning

Define
concepts

Provide
examples

Deploy

Active learning



Language understanding models



"News about
flight delays"

```
{
  "entities": [
    {
      "entity": "flight_delays",
      "type": "Topic"
    }
  ],
  "intents": [
    {
      "intent": "FindNews",
      "score": 0.99853384
    },
    {
      "intent": "None",
      "score": 0.07289317
    },
    {
      "intent": "ReadNews",
      "score": 0.0167122427
    },
    {
      "intent": "ShareNews",
      "score": 1.0919299E-06
    }
  ]
}
```


ExerciseTracker

New utterances

Search

Suggest

Review labels

Performance analysis

 Publish

Intents



None

StartActivity

StopActivity

SetHeartRateTarget

Entities



ActivityType

Pre-built Entities



number

Regex Features



No patterns added

Phrase List Features



ActivityWords



Suggest utterances that will improve:

Intent: StartActivity



Select highlight to add another entity or click to clear

begin a jog now

StartActivity(0.96)



Submit

begin bike ride

StartActivity(0.94)



Submit

start tracking a bike ride

StartActivity(0.94)



Submit

Intents



StartActivity

11 utterances: 11 correctly predicted



StopActivity

5 utterances: 5 correctly predicted



SetHeartRateTarget

5 utterances: 5 correctly predicted



None

17 utterances: 17 correctly predicted

 Correctly predicted Error (predicted as other intent)

Train Last train completed: 8/21/2015 2:04:09 PM



Linguistic analysis

Analysis tools for natural language processing
Access to part-of-speech tagging and parsing,
identifying concepts, and actions



Linguistic Analysis

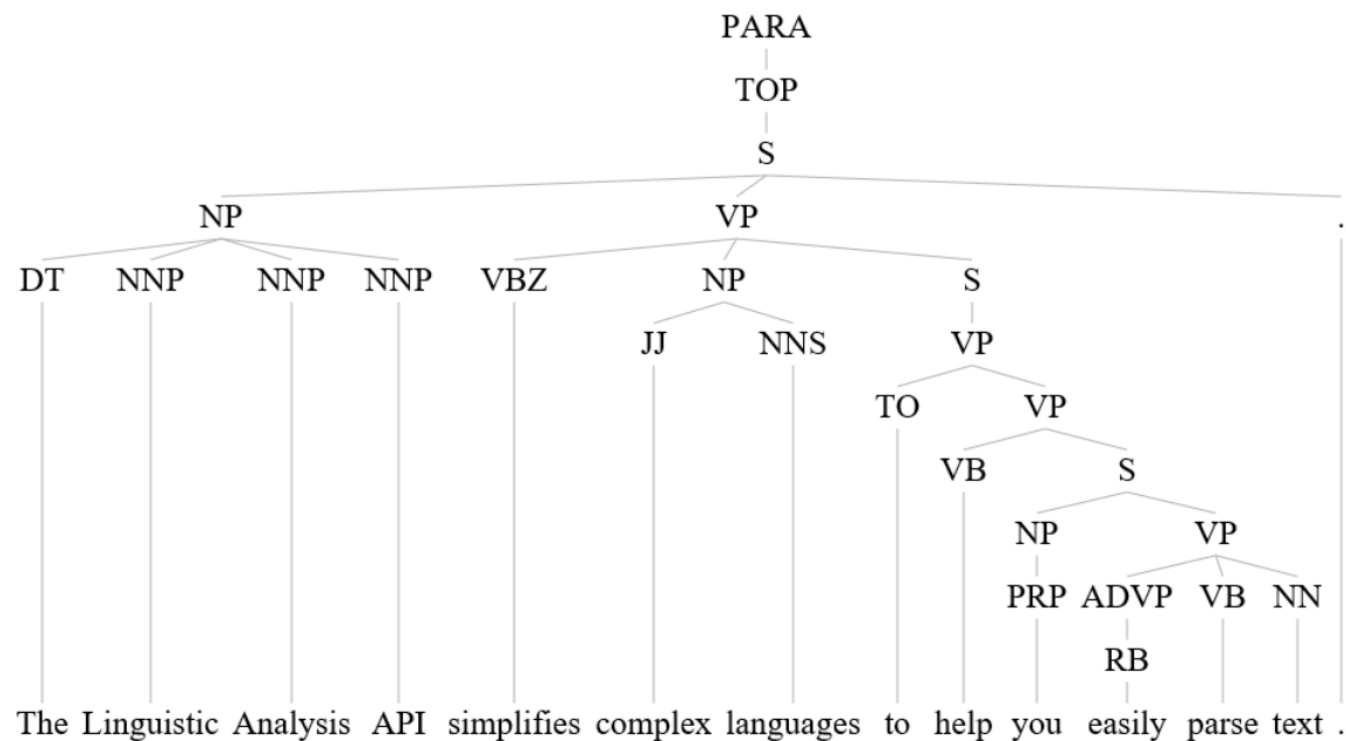
Enter a sentence

The Linguistic Analysis API simplifies complex languages to help you easily parse text.

POS tags

[["DT","NNP","NNP","NNP","VBZ","JJ","NNS","TO","VB","PRP","RB","VBP","NN","."]]

Constituency tree





Text analytics

Sentiment analysis

Understand if a record has positive or negative sentiment

Key phrase extraction

Extract key phrases from a piece of text, and retrieve topics

Topic detection

Use clustering techniques to identify the trending topics on a large set of text records

Language detection

Identify the language, 120 supported languages



Microsoft Translator

Translator Text API

Automatically detect language & easily power translation to and from 60 supported text languages

Translator Speech API

Easily translate real-time speech conversations in 9 support languages

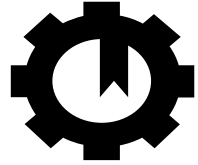
Knowledge



Tap into rich knowledge amassed from
the web, academia, or your own data

Academic Knowledge

Entity Linking | Knowledge Exploration
Recommendations



Academic knowledge

Interpret

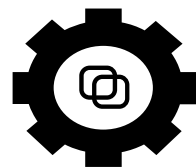
Interprets a natural language user query string. Returns annotated interpretations which can enable rich search-box auto-completion experiences that anticipate what the user is typing

Evaluate

Evaluates a query expression and returns academic knowledge entity results

Calchistogram

Calculates a histogram of the distribution of attribute values for the academic entities returned by a query expression, such as the distribution of citations by year for a given author



Entity linking

Power your app's data links with named entity recognition and disambiguation

A word might be used as a named entity, a verb, or another word form within a given sentence

The Entity Linking Intelligence Service will recognize and identify each separate entity based on the context



Knowledge exploration

Enable interactive search experiences over structured data via natural language inputs

Attribute histograms

To enable rich visualization and interactive faceted experience

Structured query evaluation

To efficiently retrieve detailed information about matching objects

Query auto-completion

To reduce user effort and help with discovery of rich capabilities

Natural language understanding

To interpret natural language queries into structured query expressions



Recommendations

Increase catalog discovery

Help customers easily discover items that they may be interested in

Personalize your experience

Show suggestions that are targeted to each specific user

Increase the bottom line

Increase your conversion rate by offering the right products at the right time



Recommendations API

*The **Recommendations API** allows Allrecipes.com to harness billions of user-shared experiences to deliver highly personalized recipe solutions that answer busy families most pressing question, 'What's for dinner tonight?'*

We are able to do this with minimal investment due to the proven capabilities of the Cortana Analytics platform. This helps us further realize our vision of providing highly personalized cooking inspiration for home cooks.

John Keane
CTO, Allrecipes.com



Search



Access billions of web pages, images, videos,
and news with the power of Bing APIs

Bing Web Search | Bing Image Search
Bing News Search | Bing Video Search
Bing Auto Suggest



Bing web search

Intelligent search to your apps with the ability to comb billions of webpages, images, videos, and news with a single API call

Retrieve web documents indexed by Bing and narrow the results down with filters such as by answer type and freshness



Bing image search

A variety of image search options, from trending images to detailed insights
Scour the web for images and get results that include thumbnail and full image URLs, publishing website, image metadata, related images, and more



Bing video search

A variety of advanced video search features, including trending videos, price, and other useful metadata

Find videos from across the web and get responses that provide useful metadata including creator, encoding format, video size and quality, and source view count



Bing news search

Turn any app into a news desk with world news grouped and filtered by topic, local news, and metadata you can mine



Bing auto suggest

Query completion suggestions capabilities, so users can type less and get to what they want faster



Sample on Cognitive Services and Xamarin can be found at:
www.j4ni.com