

COOLING TUNNEL

AC 660



*Supervac AC 660 Automatic cooling tunnel for continuous cooling processes.***Your benefits**

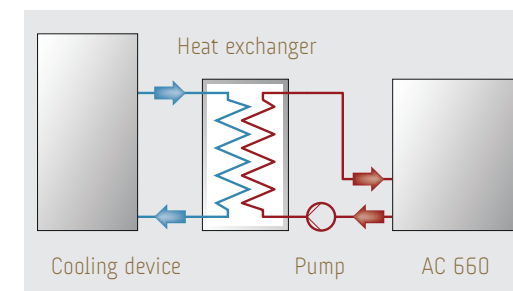
- ◆ Extends the shelf life of vacuum-packaged products after shrinking in a shrink tank or shrink tunnel by rapidly reducing the surface temperature of the products.
- ◆ Other advantages are: Eliminates any color changes due to shrinking in a tank or tunnel; energy saving with subsequent cooling processes in the cooling chain.
- ◆ Cooling water between 2° and 5° Celsius.
- ◆ Constructed of corrosion-resistant stainless steel.
- ◆ Hygienic design – easy and quick to clean.
- ◆ Service-friendly.
- ◆ Optimum cooling result through complete immersion of the packages in cooling water.
- ◆ Temperature-controlled control box heating.
- ◆ Integrated Intralox conveyor belt for safe product transfer.
- ◆ Speed of the conveyor can be adjusted from 0.1 - 0.4 m/sec.
- ◆ Two water curtains from above and two water nozzles from below.
- ◆ Automatic regulation of water temperature and water level.
- ◆ Equipped with ERB 130 infeed rollers and ARB 130 outfeed rollers.

Standard equipment

- ◆ Suitable for connection to an external refrigeration device or a heat exchanger with min. 2°C.
- ◆ Automatically controlled water level.
- ◆ Automatic temperature control with digital ACTUAL and TARGET display.
- ◆ Belt speed adjustable.

Options

- ◆ Built-in Intralox infeed belt 600 mm.
- ◆ Control unit of infeed and outfeed belts can be integrated.
- ◆ External heat exchanger.
- ◆ Integrated heat exchanger.



Drawing for the connection of the system.

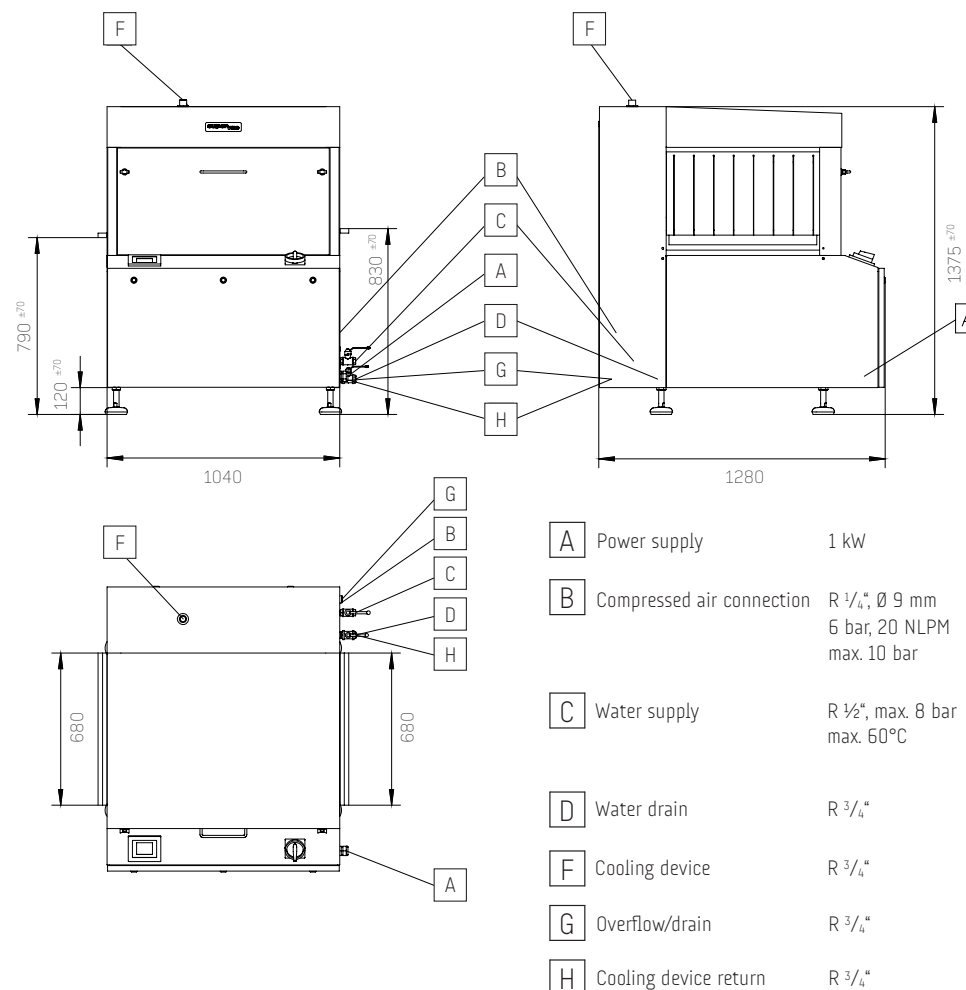


Two water curtains from above and two water nozzles from below.



Technical data

Throughput width	660 mm
Max. throughput height	300 mm
Basin volume	approx. 205 l
Connection power	approx. 1 kW
Belt speed	0.1 - 0.4 m/sec.
Cooling water supply line minimum cross section	R1"
Circulation pump pressure	min. 0.5 bar / max. 3.0 bar
Circulation pump (not supplied)	150 l/min. - 300 l/min (water)
Temperature	min. 2° Celsius (water)
Required cooling power	21 kW
Weight	approx. 325 kg





supervac 
FIRST CLASS PERFORMANCE

Supervac Maschinenbau GmbH
Kalterer Gasse 10
2340 Mödling | Austria

T: +43 2236 50 25 00

E-mail: office@supervac.at
Web: www.supervac.at