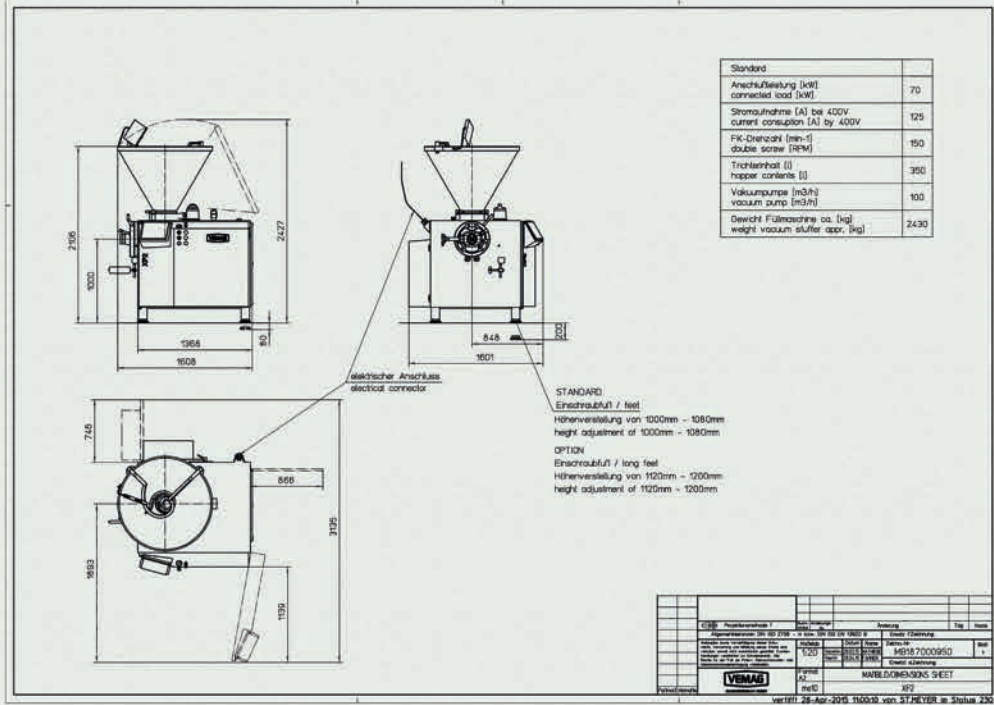
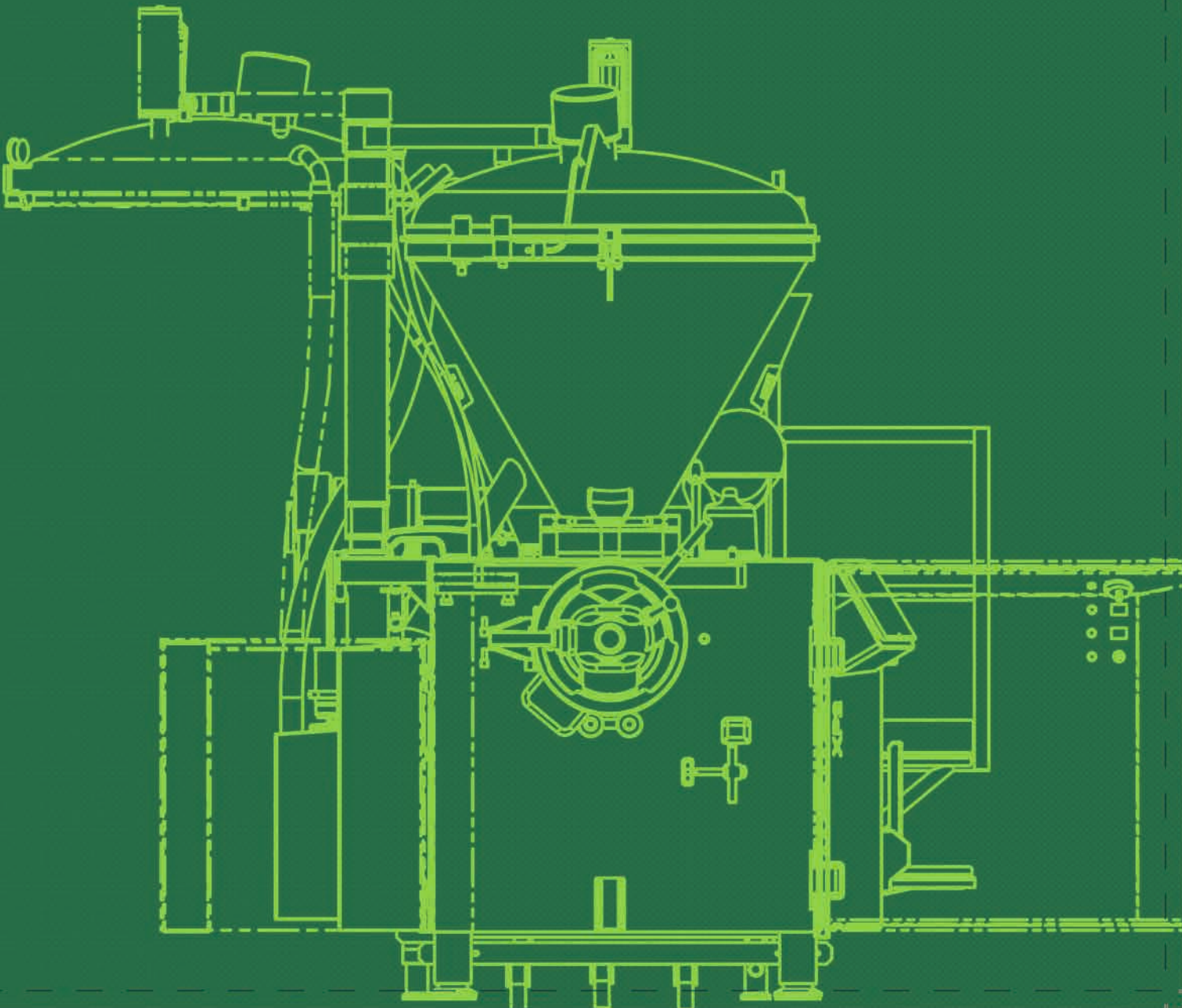


# THE XP SERIES

## THE MOST POWERFUL AND FASTEST VACUUM FILLERS IN THE WORLD

### DATA SHEET



Technical drawing

| TECHNICAL SPECIFICATIONS    | XP1            | XP2            |
|-----------------------------|----------------|----------------|
| Main drive                  | 28 kW          | 57 kW          |
| Nominal output              | 38 kW          | 70 kW          |
| Connected load              | 63 A           | 125 A          |
| Maximum nominal speed       | 150 U/min      | 150 rpm        |
| Double screw diameter       | 160 mm         | 160 mm         |
| Inlet diameter              | 180 mm         | 180 mm         |
| Hopper size                 | 350 l          | 350 l          |
| Inline grinder Ø 160 mm     | -              | optional       |
| Machine height              | 2.160 mm       | 2.160 mm       |
| Machine width               | 1.675 mm       | 1.601 mm       |
| Machine depth               | 2.519 mm       | 1.608 mm       |
| Outlet height               | 1. 000 mm + 80 | 1, 000 mm + 80 |
| Total weight:               | 2,1 t          | 2.5 t          |
| Lifting and tilting device  | optional       | -              |
| Can be combined with TVS149 | optional       | optional       |
| Filling output              | 25 t/h         | 12 t/h         |



# WE LOVE YOUR RAW MATERIALS

The new performance gold standard for industry with XP1 and XP2

## Benefits at a glance

- More would be impossible: the XP1 and XP2 are top of their class in output and power for many line applications
- VEMAG Duo Drive: perfect weights and identical lengths thanks to the perfectly continuous feeding
- Combinable with the VEMAG TV149 vacuum hopper for an air-free product appearance
- Intuitive, quick operation using a 12" touch display
- Maximum machine availability through additional protection for all electronic components: VEMAG Box-in-Box
- Minimal servicing costs due to non-wearing feed system, because the double screw bearing is optimised
- Easily accessible machine design for optimal hygiene

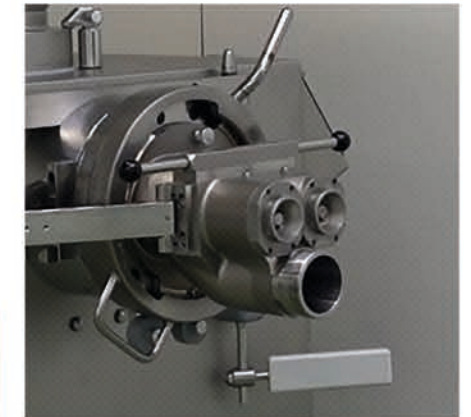


## The Principle

- Double screw with large feed volume, up to 5 litres per revolution
- Up to 25 t/h output
- Feed system has bearings on both sides and is contact-free
- Short product journey with big outlet on filling horn holder

## The benefits

- Top quality product because natural muscle structure is preserved
- Better yield due to superior binding in end product
- Market leading output of up to 25 t/h
- Maximum productivity due to flexibility for other products such as ham products made from small pieces, cooked sausage and so on



Feed-Screw, bearing and filling horn holder

## THE XP 1

Whole muscle products, cooked ham and products in large pieces: The XP1 - Squaring the circle: „The continuous piston“



XP1 Double-Screw

## THE XP 2

„The power plant“



XP2 with filler-grinder 983

## The Principle

- XP 2 works at very low, product-preserving speeds
- Double screw with large double screw volume guarantees high effective output
- Extremely powerful double screw drive with 57 KW power output and 3,660 Nm for conveying very cold, stiff mixtures
- World's most powerful filler-grinder as an option offering biggest free surface in filling-grinding application

## The benefits

- A machine for numerous products, from dry sausage, to minced meat, to cooked sausage
- Big feed system volume guarantees maximum product protection combined with highly effective performance
- The powerful double screw drive can cope with up to 70% frozen minced meat content (as an example)
- New product standards in the quality of dry sausage such as pepperoni
- Filler-grinder technology for guaranteed consistent particle definition and a more efficient production process
- Continuous separator for more product safety