



Top speed

- For small chubs in the calibre range 18 to 50 mm
- Up to 300 cycles per minute in continuous mode
- R-ID clip size XS and S – clip closure up to bacteria-proof with plastic casings
- Shortest spreading – more portions per shirred casing

Why clip with FCA 50?

The FCA 50 is characterised by a top speed at up to 300 cycles in continuous mode. It closes cellulose and plastic casings of calibres up to 50 mm, depending on product and casing, with the R-ID clip series.



Advantages

- Continuously variable speed (start-stop) plus continuous mode for maximum productivity
- Savings on casing cost due to short 16 mm spreading
- Integrated tray
- Incorrect settings are avoided by detection of the clip size and die
- Auto-Stop System, clip sensor monitoring end of clip supply on reel
- Voiding separator for short sausage shoulders and clean sausage tails

- Simple machine operation with EASY TOUCH, product parameters can be recalled from the programme memory
- Electronic hand-wheel for adjustments and setting parameters



Quality and hygiene

- Robustness and long service life guaranteed by use of stainless steel and titanium
- Easy to clean due to smooth surfaces



Optional equipment

- Automatic looper GSA 20
- Consumption-oriented central

lubrication for maximum reliability and service life

- Fully hygienic conveyor belt
- Casing end sensor
- Twin turret with swivel horns and 90° pivot point
- Ball joint filler connection
- Clip coding



Consumables

R-ID Clip: XS, S



Function and operation

The automatic double clipping machine is connected mechanically and synchronized electrically to a filling machine. The portions are fed in precisely to the nearest gram and closed by a clip. Operator, set-up and service levels are clearly separated.



Clip system solutions

The complete system of clipping machine, clips and loops from a single source ensures efficient and trouble-free production. Original clips from Poly-clip System guarantee the highest quality. Manufacturing is subject to the most rigorous quality controls. Certified in accordance with ISO 22000 and ISO 9001 they are designed to suit the production process perfectly. With its food-proof safety coating certified by the SGS INSTITUT FRESENIUS, Poly-clip SAFE-COAT technology ensures trouble-free production and if required a no-worry product warranty. Poly-clip System is the world's leading provider of clip system solutions.



Technical data

Width	1,660 mm
Depth	1,550 – 1,980 mm
Height	1,800 – 1,975 mm
Weight	410 – 450 kg
Three-phase current connection	200 – 240 VAC, 380 – 460 VAC, 50/60 Hz
Power input	2.8 kW
Fuse connection	16 A
Compressed air	5 – 7 bar / 0,5 – 0,7 MPa
Air consumption	1.6 NL/cycle
Spreading	16 mm

Dimensions, weight and consumption values vary depending on the equipment and/or machine configuration.



Simply for small calibres

- Especially for snack products
- Basic oriented operation
- For a range of calibres from 18 to 80 mm and up to 125 cycles per minute in continuous mode
- Robust and of stainless steel design for highest reliability and a long service life

Why clip with FCA 60?

In the FCA class the FCA 60 is the specialist for small calibres, a robust entry-level machine with simple functions that is easy to operate. The automatic double-clipper closes collagen casings up to 65 mm, fibrous casings up to 48 mm and plastic casings up to 80 mm (depending on the material thickness).

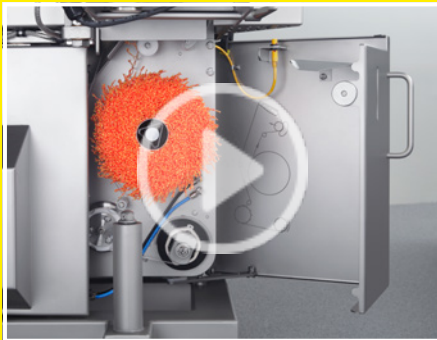


Advantages

- Easy clipping optimized to the essentials
- R-ID Clip with high holding force, even up to bacteria-proof clip closure with plastic casings
- Incorrect settings are avoided by detection of the clip size and die
- Auto-Stop System, clip sensor monitoring end of clip supply on reel
- Tool free quick-change system of the die
- Safety casing brake with hand guard; maintaining safety distance to separator when adjusted, operation without casing brake is blocked
- Short sausage ends, uniform pleating and clean sausage tails due to the linear voiding separator
- Highest productivity adjustable in three speed levels, additional speed profile for overspreading
- Air-free slack filling of moulded products by overspreading, total spreading up to 100 mm, manually adjustable
- Ergonomic and functional controls for product-specific settings



- Comfortable external adjustment of the separator hole
- Electronic hand-wheel for adjustments, clip loading position, clip pressure and parameter settings



Automatic looper GSA 20 – easy reload of loops



Removable separator cleaning cover



Product outlet with adjustable double-conveyor belt



Safety casing brake with hand guard

- Additional safety by two-handed triggering of first clip
- Adjustable conveyor belt speed for products true to the calibre
- Simple, ergonomic handling for reloading of casing, without swing-out of the clip head
- Easy to manoeuvre with two lockable wheels
- Low noise level

✓ Quality and hygiene

- Stainless steel provides resistance to aggressive cleaning solutions
- Smooth surfaces, large openings and flaps make for easy cleaning
- Removable separator cleaning cover – allows ideal accessibility

✓ Maintenance

- Extremely compact design for easy serviceability with few wear parts easily accessible
- Centralized lubrication strip for easy and fast maintenance

+ Optional equipment

- Special machine version for rings with adapted front flap and double-conveyor belt 700 mm
- String dispenser for rings
- Conveyor belt, single lane 700 and 1,200 mm, roller extension 1,000 and 1,600 mm, and double-belt 700 mm
- Automatic looper GSA 20
- Comfort setting for spreading and overspreading
- Twin turret with swivel horns
- Casing brake assistant – semi-automatic casing brake holder system for fastest reloading of casings
- Pneumatic casing brake (dry sausage brake)
- Length portioning by means of optical scanning
- Ball joint filler connection
- Sensors for loops and casing end

+ Combinability

ES 5000

Labelling system for marking and traceability

✓ Consumables

R-ID Clip: XS, S, M

⏻ Function and operation

The automatic clipping machine is connected mechanically and electrically to the stuffer. The portions are fed in precisely to the nearest gram and closed by a clip as single portions or chains. The FCA 60 with its controller board

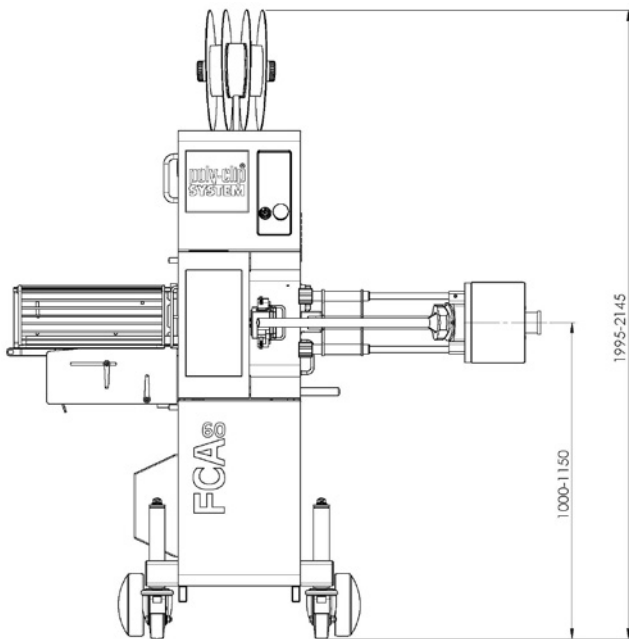
is driven by a servo frequency converter. The clear control panel includes function keys for the counters knife, loop, label and single clip feature. Reload of casing is simple and comfortable, without swing-out of the clip head.



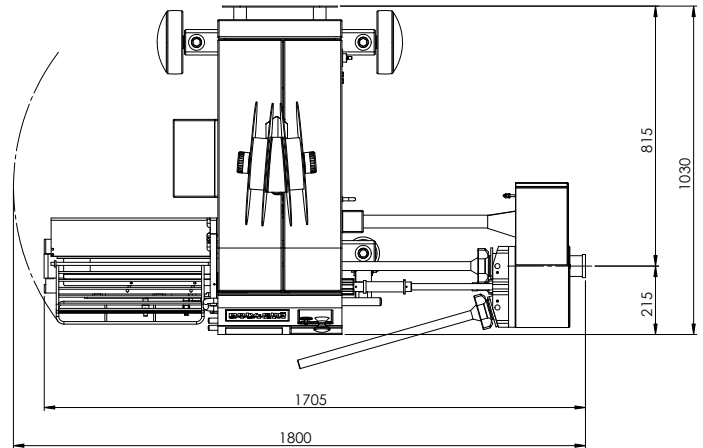
Clip system solutions

The complete system of clipping machine, clips and loops from a single source ensures efficient and trouble-free production. Original clips from Poly-clip System guarantee the highest quality. Manufacturing is subject to the most rigorous quality controls. Certified in accordance with ISO 22000 and ISO 9001 they are designed to suit the production process perfectly. With its food-proof safety coating certified by the SGS INSTITUT FRESENIUS, Poly-clip SAFE-COAT technology ensures trouble-free production and if required a no-worry product warranty. Poly-clip System is the world's leading provider of clip system solutions.





Front view (Dimensions in mm)



Top view | Length of stuffing horn 600 (Dimensions in mm)

Technical data

Width	1,705 – 1,800 mm
Depth	1,030 mm
Height	1,995 – 2,145 mm
Weight	460 kg
Three-phase current connection	200 – 240 VAC, 380 – 460 VAC, 50/60 Hz
Power input	4 kW
Fuse connection	16 A
Compressed air	5 – 7 bar / 0,5 – 0,7 MPa
Air consumption	2.5 NL/cycle
Spreading	18, 26, 30 mm
Total spreading up to	100 mm

Dimensions, weight and consumption values vary depending on the equipment and/or machine configuration.



Entrance into FCA class

- For a range of calibres from 38 to 160 mm and up to 125 cycles per minute in continuous mode
- Robust and of stainless steel design for highest reliability and a long service life
- Maximum productivity with basic oriented operation

Why clip with FCA 80?

The FCA 80 is a robust entry-level machine with simple functions that is easy to operate. With four different spreadings the clipping machine offers maximum flexibility. The automatic double-clipper FCA 80 closes collagen casings up to 80 mm, fibrous casings up to 100 mm and plastic casings up to 160 mm (depending on the material thickness).



Advantages

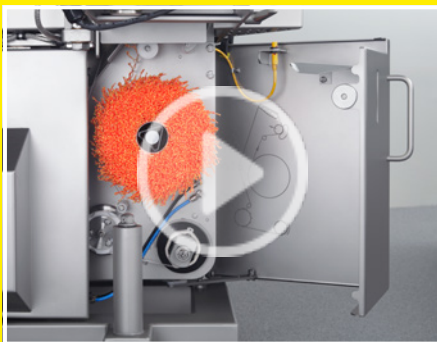
- Easy clipping optimized to the essentials
- R-ID Clip with high holding force, even up to bacteria-proof clip closure with plastic casings
- Incorrect settings are avoided by detection of the clip size and die
- Auto-Stop System, clip sensor monitoring end of clip supply on reel
- Tool free quick-change system of the die
- Safety casing brake with hand guard; maintaining safety distance to separator when adjusted, operation without casing brake is blocked
- Short sausage ends, uniform pleating and clean sausage tails due to the linear voiding separator
- Highest productivity adjustable in three speed levels, additional speed profile for overspreading
- Air-free slack filling of moulded products by overspreading, total spreading up to 100 mm, manually adjustable
- Ergonomic and functional controls for product-specific settings



- Comfortable external adjustment of the separator hole
- Electronic hand-wheel for adjustments, clip loading position, clip pressure and parameter settings



Powerful for large calibres



Automatic looper GSA 20 – easy reload of loops



Removable separator cleaning cover



Product outlet with adjustable double-conveyor belt



Safety casing brake with hand guard

- Additional safety by two-handed triggering of first clip
- Adjustable conveyor belt speed for products true to the calibre
- Simple, ergonomic handling for reloading of casing, without swing-out of the clip head
- Easy to manoeuvre with two lockable wheels
- Low noise level



Quality and hygiene

- Stainless steel provides resistance to aggressive cleaning solutions
- Smooth surfaces, large openings and flaps make for easy cleaning

- Removable separator cleaning cover – allows ideal accessibility



Maintenance

- Extremely compact design for easy serviceability with few wear parts easily accessible
- Centralized lubrication strip for easy and fast maintenance



Optional equipment

- Special machine version for rings with adapted front flap and double-conveyor belt 700 mm
- String dispenser for rings
- Conveyor belt, single lane 700 and 1,200 mm, roller extension 1,000 and 1,600 mm, and double-belt 700 mm
- Automatic looper GSA 20
- Comfort setting for spreading and overspreading
- Twin turret with swivel horns
- Casing brake assistant – semi-automatic casing brake holder system for fastest reloading of casings
- Pneumatic casing brake (dry sausage brake)
- Length portioning by means of optical scanning
- Ball joint filler connection
- Sensors for loops and casing end



Combinability

ES 5000

Labelling system for marking and traceability



Consumables

R-ID Clip: M, L, XL



Function and operation

The automatic clipping machine is connected mechanically and electrically to the stuffer. The portions are fed in precisely to the

nearest gram and closed by a clip as single portions or chains. The FCA 80 with its controller board is driven by a servo frequency converter. The clear control panel includes function keys for the counters knife, loop, label and single clip feature. Reload of casing is simple and comfortable, without swing-out of the clip head.

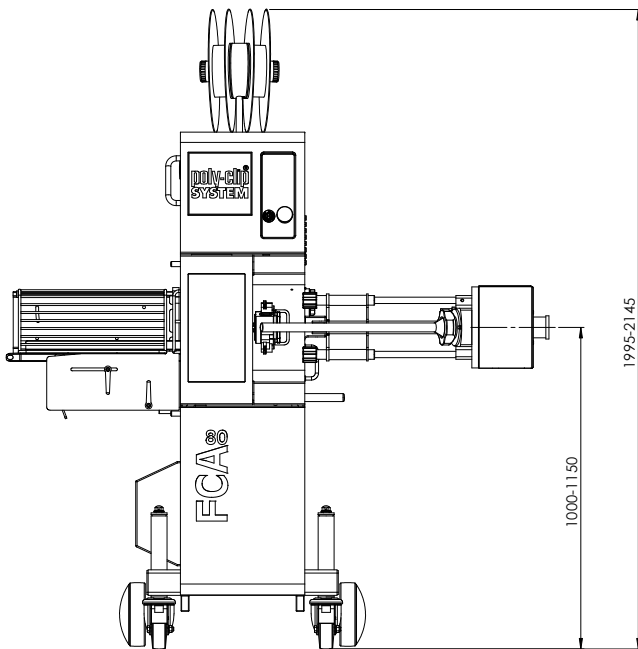


Clip system solutions

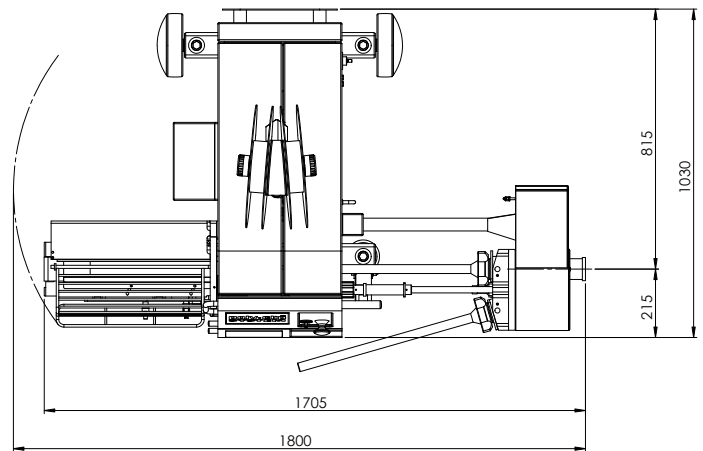
The complete system of clipping machine, clips and loops from a single source ensures efficient and trouble-free production. Original clips from Poly-clip System guarantee the highest quality. Manufacturing is subject to the most rigorous quality controls. Certified in accordance with ISO 22000 and ISO 9001 they are designed to suit the production process perfectly. With its food-proof safety coating certified by the SGS INSTITUT FRESENIUS, Poly-clip SAFE-COAT technology ensures trouble-free production and if required a no-worry product warranty. Poly-clip System is the world's leading provider of clip system solutions.

FCA 80 with adjusted front flap and double-conveyor belt specifically for rings





Front view (Dimensions in mm)



Top view | Length of stuffing horn 600 (Dimensions in mm)

Technical data

Width	1,705 – 1,800 mm
Depth	1,030 mm
Height	1,995 – 2,145 mm
Weight	460 kg
Three-phase current connection	200 – 240 VAC, 380 – 460 VAC, 50/60 Hz
Power input	4 kW
Fuse connection	16 A
Compressed air	5 – 7 bar / 0,5 – 0,7 MPa
Air consumption	2.5 NL/cycle
Spreading	26, 30, 36, 44 mm
Total spreading up to	100 mm

Dimensions, weight and consumption values vary depending on the equipment and/or machine configuration.



Air-free slack filling

- Total spreading up to 300 mm for moulded products
- For the 38 – 160 mm calibre range at up to 126 cycles/minute in continuous mode
- Versatility for chubs, cold cuts and ham
- Voiding separator and clip shape optimised for short sausage shoulders and more slices per sausage

Why clip with FCA 90?

The FCA 90 offers unrivalled versatility. It closes collagen casings up to 90 mm, fibrous casings up to 120 mm and plastic casings up to 160 mm (depending on the material thickness). Chubs, cold cuts, ham with only 10 % injected, tumbled pieces of meat, can be reliably processed.



Advantages

- Change of spreading via SAFETY TOUCH, within the standard spreadings as well as to the overspreading, based on the unique PCS motion controller
- Highest productivity, simple operation and self-monitoring processes of the essential functions
- R-ID Clip with high holding force, even up to bacteria-proof clip closure with plastic casings
- Safety casing brake with hand guard; maintaining safety distance to separator when adjusted, operation without casing brake is blocked
- Operating instructions on SAFETY TOUCH. Functions and parameters are explained
- Incorrect settings are avoided

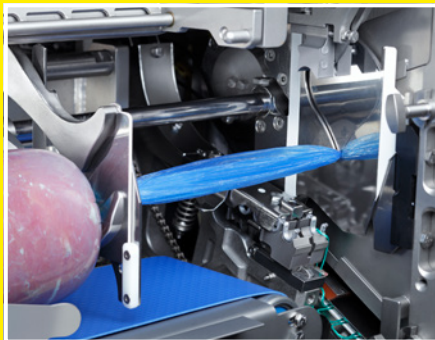
Automatic Double-Clipper



Powerful clipper for large calibres



Casing brake assistant – semi-automatic casing brake holder system



Overspreading for air-free slack filling of moulded products



Retractable automatic loopers GSA for easy reloading of loops



Products true to the calibre due to adjustable conveyor speed

ly assignable manual functions, e.g. inching mode

- Highest productivity; product parameters can be recalled from the SAFETY TOUCH recipe management
- Tool free quick-change system of the punch
- Easy external adjustment of the separator hole
- Manual clip pressure setting
- Electronic hand-wheel for adjustments and setting parameters
- Additional safety by two-handed triggering of first clip
- Product true to the calibre by adjustable conveyor speed; conveyor belt length 1,200 mm
- Simple, ergonomic handling for reloading of casing, without swing-out of the clip head
- Easy to manoeuvre with two lockable wheels
- Low noise level
- Compact design

**Quality and hygiene**

- Robust and of stainless steel design for highest reliability and a long service life
- Easy to clean due to smooth surfaces

**Maintenance**

- Centralized lubrication strip for easy and fast maintenance
- Optimum access for maintenance work

**Optional equipment**

- by detection of the clip size and die
- Auto-Stop System, clip sensor monitoring end of clip supply on reel
- Uniform pleating and clean sausage tails due to the linear voiding separator
- Highly dynamic, energy-efficient
- servo drive, infinitely adjustable speed
- Air-free slack filling of moulded products by overspreading, total spreading up to 300 mm
- Simple machine operation with SAFETY TOUCH – shockproof, 10" large and easy to clean
- Operator-friendly with individual-

- Automatic loopers GSA 20, loop left or right
- Consumption-oriented central lubrication for maximum reliability and service life
- Sensors for loops and casing end
- Roller conveyor extension up to 1,700 mm
- Vacuum system 48, 60, 76 mm

- WS Food Standard interface for operational data acquisition
- Intelligent Filler Clipper (IFC) Interface upon request
- Twin turret with swivel horns and 90° pivot point
- Casing brake assistant – semi-automatic casing brake holder system for fastest reloading of casings
- Pneumatic dry sausage brake, individual control of the twin turret's casing brakes as product parameter via SAFETY TOUCH
- Second control panel at end of conveyor belt
- Length portioning by means of optical scanning, optional up to 1,300 or 1,800 mm
- Clip coding
- Ball joint filler connection



Clip system solutions

The complete system of clipping machine, clips and loops from a single source ensures efficient and trouble-free production. Original clips from Poly-clip System guarantee the highest quality. Manufacturing is subject to the most rigorous quality controls. Certified in accordance with ISO 22000 and ISO 9001 they are designed to suit the production process perfectly. With its food-proof safety coating certified by the SGS INSTITUT FRESENIUS, Poly-clip SAFE-COAT technology ensures trouble-free production and if required a no-worry product warranty. Poly-clip System is the world's leading provider of clip system solutions.



Consumables

R-ID Clip: M, L, XL

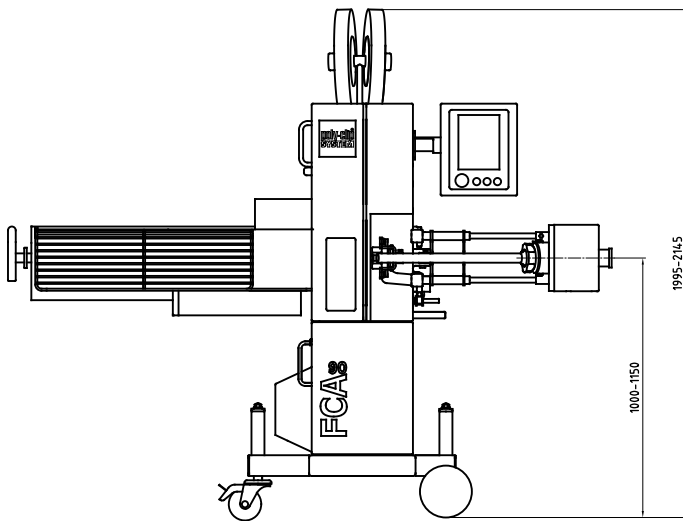


Function and operation

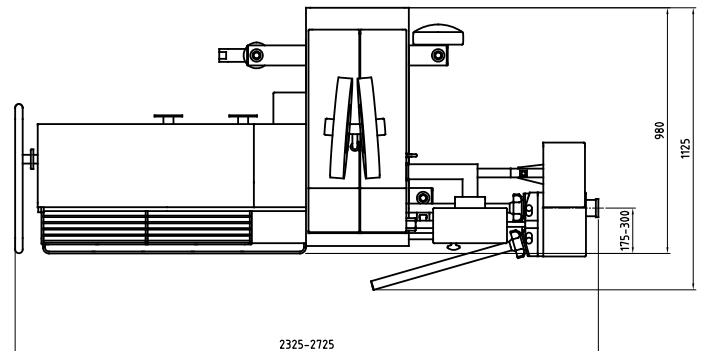
The automatic double clipping machine is connected mechanically and synchronized electrically to a filling machine. The portions are fed in precisely to the nearest gram and closed by a clip. The PC control allows a very fast and accurate signal processing. On the SAFETY TOUCH display the diagnostic system provides a direct and clear indication of the clipping machine's operational status as well an analysis of filling and clipping times. Deviations from the recipe parameters saved in SAFETY TOUCH are monitored. The operator is intuitively guided through the flat menu structure of the SAFETY TOUCH by means of self-explaining pictograms. Operator, set-up and service levels are kept clearly separated and are password protected. A continuous process monitoring is offered by the high degree of automation.

Versatility for chubs, cold cuts and ham





Front view (Dimensions in mm)



Top view (Dimensions in mm) Length of stuffing horn 600

Technical data

Width	2,325 – 2,725 mm
Depth	1,125 mm
Height	1,995 – 2,145 mm
Weight	600 kg
Three-phase current connection	200 – 240 VAC, 380 – 460 VAC, 50/60 Hz
Power input	7.5 kW
Fuse connection	16 A
Compressed air	5 – 7 bar / 0,5 – 0,7 MPa
Air consumption	2.5 NL/cycle
Spreading	26, 30, 36, 44 mm
Total spreading up to	300 mm

Dimensions, weight and consumption values vary depending on the equipment and/or machine configuration.



Medium automation

- For the 24 – 90 mm calibre range at up to 186 cycles per minute in continuous mode
- Shortest down-time for reloading of casing and maintenance, with even higher safety
- Fully hygienic conveyor belt, dismantling without tools
- Optimal accessibility for ease of cleaning

Why clip with FCA 100?

High production speed at up to 186 cycles per minute for small and medium-sized calibres as well as shortest downtimes distinguish the FCA 100. The automatic double-clipper closes collagen and fibrous casings up to 58 mm and plastic casings up to 90 mm in diameter (depending on the material thickness).



Advantages

- Safety casing brake with hand guard; maintaining safety distance to separator when adjusted, operation without casing brake is blocked
- R-ID Clip with high holding force, even up to bacteria-proof clip closure with plastic casings
- Incorrect settings are avoided by detection of the clip size and die
- Auto-Stop System, clip sensor monitoring end of clip supply on reel
- Quick-change system for punch and die without tools
- Operator-friendly with individually assignable manual functions, e.g. inching mode
- Comfortable external adjustment of the clip pressure and separator hole, without tools
- Short sausage ends, uniform pleating and clean sausage tails due to the linear voiding separator
- Highly dynamic, energy-efficient servo drive, infinitely adjustable speed
- Highest productivity; product parameters can be recalled



from the SAFETY TOUCH recipe management

- Simple machine operation with SAFETY TOUCH – shockproof, 10" large and easy to clean
- Electronic hand-wheel for

Excellence in Clipping

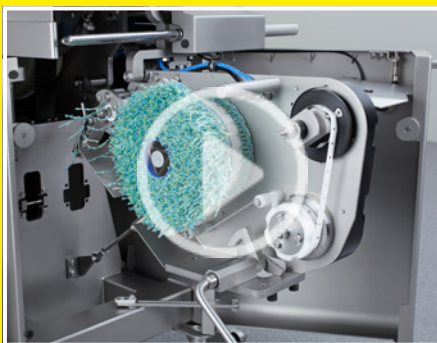
poly-clip®
SYSTEM



Fully hygienic conveyor belt, dismantling without tools



Casing brake assistant – semi-automatic casing brake holder system



Retractable automatic looper GSA for easy reloading of loops



Separator cleaning flap

- Easy to clean due to smooth surfaces, large openings, front flap and the special separator cleaning position
- Separator cleaning flap – allows ideal accessibility

✓ Maintenance

- Centralized lubrication strip for easy and fast maintenance
- Maintenance- and service-friendly with few wearing parts, easily accessible by swing-off side covers

+ Optional equipment

- Consumption-oriented central lubrication for maximum reliability and service life
- Fully hygienic conveyor belt, dismantling without tools, single lane 700 or 1200 mm, double-belt 700 mm and roller extension
- Casing brake assistant – semi-automatic casing brake holder system for fastest reloading of casings
- Casing end sensor
- Sensor for end of loop supply
- Pneumatic dry sausage brake, individual control of the twin turret's casing brakes as product parameter via SAFETY TOUCH
- Automatic looper GSA 20, loop left or right
- Air-free slack filling of moulded products by overspreading, sensor monitored total spreading up to 100 mm, comfort setting in front
- Twin turret with swivel horns and 90° pivot point
- Length portioning by optical sensor or mechanical length stop 1,000 mm and 1,350 mm
- Ball joint filler connection
- String dispenser for rings
- Print mark control for centred printing format
- Intelligent Filler Clipper (IFC) Interface upon request

adjustments and setting parameters

- Swivel horn, twin turret and casing brake assistant with 90° pivot point
- Low noise level
- Processes high-quality clips – certified safe for use with food by SGS INSTITUT FRESENIUS
- Clip and loop manufacture

certified in accordance with ISO 22000

- USB port for data import and export

✓ Quality and hygiene

- Robustness and long service life guaranteed by use of stainless steel and titanium



Combinability

ES 5000

Labelling system for marking and traceability



Consumables

R-ID Clip: S, M



Function and operation

The automatic double clipping machine is connected mechanically and synchronized electrically to a filling machine. The portions are fed in precisely to the nearest gram and closed by a clip. The PC control allows a very fast and accurate signal processing. On the SAFETY TOUCH display the diagnostic system provides a direct and clear indication of the clipping machine's operational status as well an analysis of filling and clipping times. Deviations from the recipe parameters saved in SAFETY TOUCH are monitored. The operator is intuitively guided through the flat menu structure of the SAFETY TOUCH by means of self-explaining pictograms. Operator, set-up and service levels are kept clearly separated and are password protected. A high degree of process monitoring is offered by the FCA's automation.



Clip system solutions

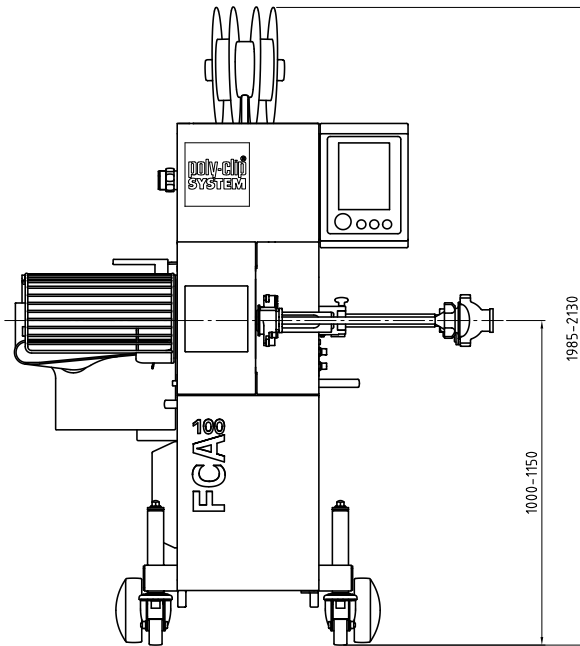
The complete system of clipping machine, clips and loops from a single source ensures efficient and trouble-free production. Original clips from Poly-clip System guarantee the highest quality. Manufacturing is subject to the most rigorous quality controls. Certified in accordance with ISO 22000 and ISO 9001 they are designed to suit the production process perfectly. With its food-proof safety coating certified by the SGS INSTITUT FRESE-

NIUS, Poly-clip SAFE-COAT technology ensures trouble-free production and if required a no-worry product warranty. Poly-clip System is the world's leading provider of clip system solutions.

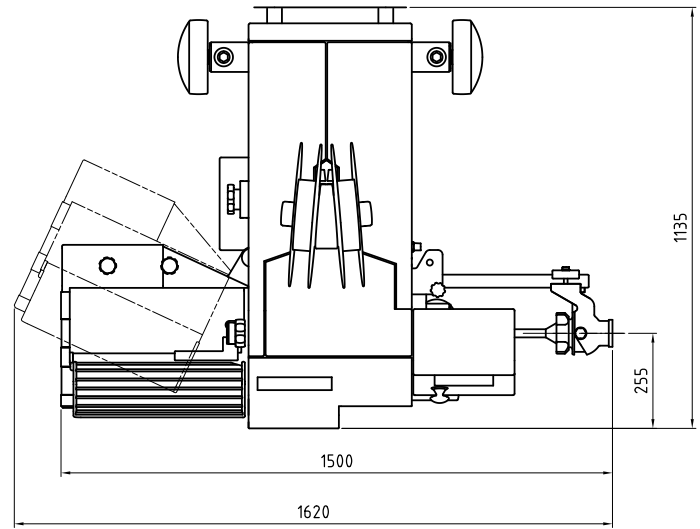


FCA 100

Automatic Double-Clipper



Front view (Dimensions in mm)



Top view (Dimensions in mm) Length of stuffing horn 600

Technical data

Width	1,500 – 1,620 mm
Depth	1,135 mm
Height	1,985 – 2,130 mm
Weight	550 kg
Three-phase current connection	200 – 240 VAC, 380 – 460 VAC, 50/60 Hz
Power input	4 kW
Fuse connection	16 A
Compressed air	5 – 7 bar / 0,5 – 0,7 MPa
Air consumption	2.5 NL/cycle
Spreading	18, 26, 30 mm

Dimensions, weight and consumption values vary depending on the equipment and/or machine configuration.



Maximum automation

- For the 24 – 120 mm calibre range at more than 200 cycles per minute in continuous mode
- Highest productivity through automatic, self-monitoring processes
- Voiding separator and clip shape optimised for short sausage shoulders and more slices per sausage
- Consumption-oriented central lubrication for

Why clip with FCA 120?

The FCA 120 is characterised by a maximum speed at more than 200 cycles combined with highest automation. It closes collagen and fibrous casings up to 58 mm and plastic casings up to 120 mm (depending on the material thickness).



Advantages

- Highest productivity through automatic, self-monitoring processes
- Size of the voiding separator and setting of the clip pressure under servo control, can be saved as product parameters
- Incorrect settings are avoided by detection of the clip size, the punch and die
- R-ID Clip with high holding force, even up to bacteria-proof clip closure with plastic casings
- Auto-Stop System, clip sensor monitoring end of clip supply on reel; easy removal of remaining clips
- Uniform pleating and clean sausage tails due to the linear vertical voiding separator
- Highly dynamic, energy-efficient servo drive, infinitely adjustable speed
- Simple machine operation with SAFETY TOUCH – shockproof, 10" large and easy to clean
- Highest productivity; all product parameters can be recalled from the SAFETY TOUCH recipe management
- All recipes can be duplicated,



saved and restored with the SAFETY TOUCH

- Operator-friendly with individually assignable manual functions, e.g. inching mode
- Simple, ergonomic handling

Excellence in Clipping

poly-clip®
SYSTEM



FCA 120 – the specialist machine for high speed production of calibres up to 120 mm



Shortest setup time due to comfort opening of front flap



Overspreading for air-free slack filling of moulded products



Separator cleaning flap



Casing brake assistant – semi-automatic casing brake holder system

- Adjustable conveyor belt speed for products true to the calibre
- Air-free slack filling of moulded products by overspreading, total spreading up to 130 mm
- Low noise level
- USB port for data import and export



Quality and hygiene

- Robustness and long service life guaranteed by use of stainless steel and titanium
- Easy to clean due to smooth surfaces, large openings, front flap and the special separator cleaning position
- Separator cleaning flap – allows ideal accessibility



Maintenance

- Easy access to main connections, electronics and pneumatics
- Maintenance- and service-friendly with few wearing parts, easily accessible by swing-off side covers
- Detailed display of fault messages at a glance
- Simple analysis by filtering the error list, selecting and exporting the messages



Optional equipment

- Consumption-oriented central lubrication for maximum reliability and service life
- Automatic looper GSA 20, loop left or right
- Spreading and overspreading servo-assisted
- Casing brake assistant – semi-automatic casing brake holder system for fastest reloading of casings
- Burst detection with automatic machine stop
- Sensors for loops and casing end
- Double-clip detection with fully automatic machine stop

for reloading of casing, without swing-out of the clip head

- Quick-change system for clip spacing without tools and for spreading with just a few hand-grips
- Safety casing brake with hand guard; maintaining safety distance to separator when ad-

justed, operation without casing brake is blocked

- Additional safety by two-handed triggering of first clip
- Operating instructions on SAFETY TOUCH. Functions and parameters are explained
- Electronic hand-wheel for adjustments and setting parameters

- Conveyor belt position recognition on overspreading
- Twin turret with swivel horns and 90° pivot point
- Clean in Place (CIP) for continuous die cleaning
- Pneumatic dry sausage brake, individual control of the twin turret's casing brakes as product parameter via SAFETY TOUCH
- Length portioning by optical sensor or mechanical length stop 1,000 mm and 1,350 mm
- String dispenser for rings
- Print mark control for centred printing format
- Ball joint filler connection
- Fully hygienic conveyor belt, dismantling without tools, single lane 700 or 1200 mm, double-belt 700 mm and roller extension
- USB port for data import and export
- WS Food Standard interface for operational data acquisition
- Intelligent Filler Clipper (IFC) Interface upon request

+ Combinability

ES 5000

Labelling system for marking and traceability

✓ Consumables

R-ID Clip: S, M

⏻ Function and operation

The automatic double clipping machine is connected mechanically and synchronized electrically to a filling machine. The portions are fed in precisely to the nearest gram and closed by a clip. The PC control allows a very fast and accurate signal processing. On the SAFETY TOUCH display the diagnostic system provides a direct and clear indication of the clipping machine's operational status as well as a clear error message.

A high degree of process monitoring is offered by the FCA's automation. In case of deviations from the recipe parameters saved in SAFETY TOUCH a warning is automatically displayed. The operator is intuitively guided through the flat menu structure of the SAFETY TOUCH by means of self-explaining pictograms. Operator, set-up and service levels are kept clearly separated and are password protected. The automated operation offers the greatest product safety and maximum efficiency.

✓ Clip system solutions

The complete system of clipping machine, clips and loops from a single source ensures efficient and trouble-free production. Original clips from Poly-clip System guarantee the highest quality. Manufacturing is subject to the most rigorous quality controls. Certified in accordance with ISO 22000 and ISO 9001 they are designed to suit the production process perfectly. With its food-proof safety coating certified by the SGS INSTITUT FRESENIUS, Poly-clip SAFE-COAT technology ensures trouble-free production and if required a no-worry

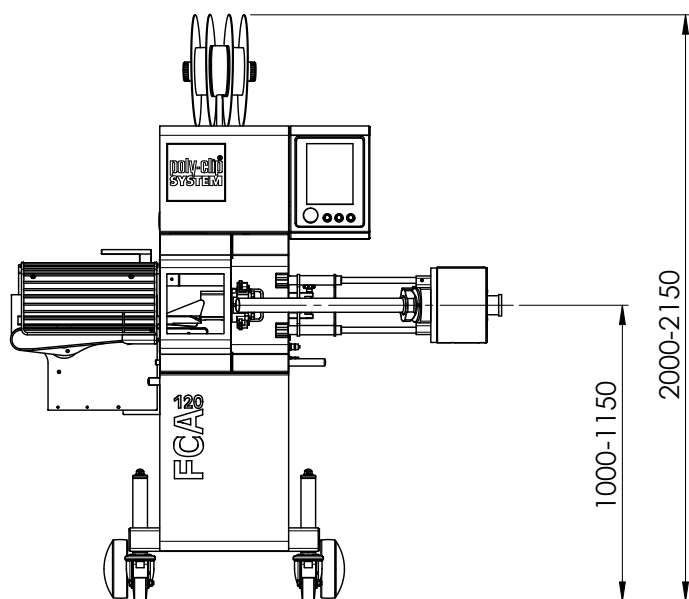
product warranty. Poly-clip System is the world's leading provider of clip system solutions.

The FCA series with smooth surfaces of stain less steel for ease of cleaning

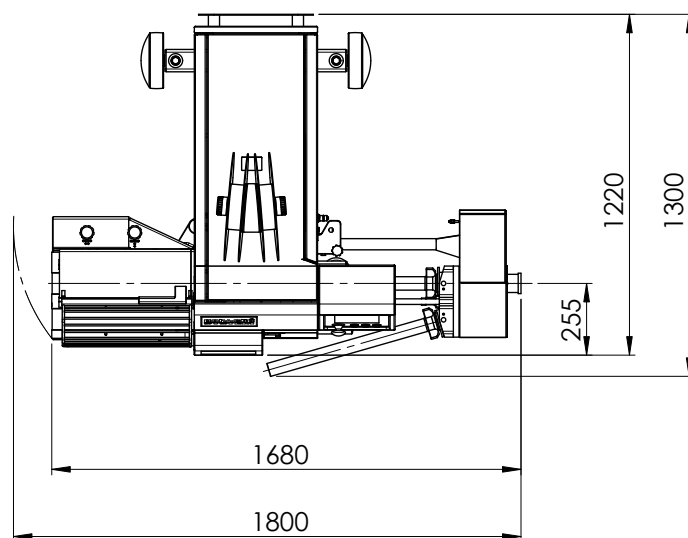


FCA 120

Automatic Double-Clipper



Front view (Dimensions in mm)



Top view (Dimensions in mm) Length of stuffing horn 600

Technical data

Width	1,680 – 1,800 mm
Depth	1,220 – 1,300 mm
Height	2,000 – 2,150 mm
Weight	640 kg
Three-phase current connection	200 – 480 VAC, 50/60 Hz
Power input	3 kW
Fuse connection	16 A
Compressed air	5 – 7 bar / 0,5 – 0,7 MPa
Air consumption	1.6 NL/cycle
Spreading	18, 26, 30 mm
Total spreading up to	130 mm

Dimensions, weight and consumption values vary depending on the equipment and/or machine configuration.



Medium automation

- For the 38 – 150 mm calibre range at up to 156 cycles per minute in continuous mode
- Shortest down-time for reloading of casing and maintenance, with even higher safety
- Fully hygienic conveyor belt, dismantling without tools
- Optimal accessibility for ease of cleaning

Why clip with FCA 140?

Flexibility and product versatility in the mid-size calibre range at up to 156 cycles per minute as well as shortest downtimes distinguish the FCA 140. The automatic double-clipper closes collagen casings up to 58 mm, fibrous casings up to 90 mm and plastic casings up to 150 mm in diameter (depending on the material thickness).



Advantages

- Safety casing brake with hand guard; maintaining safety distance to separator when adjusted, operation without casing brake is blocked
- R-ID Clip with high holding force, even up to bacteria-proof clip closure with plastic casings
- Incorrect settings are avoided by detection of the clip size and die
- Auto-Stop System, clip sensor monitoring end of clip supply on reel
- Quick-change system for punch and die without tools
- Operator-friendly with individually assignable manual functions, e.g. inching mode
- Comfortable external adjustment of the clip pressure and separator hole, without tools
- Short sausage ends, uniform pleating and clean sausage tails due to the linear voiding separator
- Highly dynamic, energy-efficient servo drive, infinitely adjustable speed
- Highest productivity; product parameters can be recalled



from the SAFETY TOUCH recipe management

- Simple machine operation with SAFETY TOUCH – shockproof, 10" large and easy to clean
- Electronic hand-wheel for

Excellence in Clipping

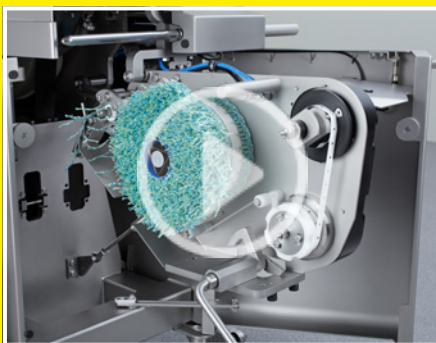
poly-clip®
SYSTEM



Fully hygienic conveyor belt, dismantling without tools



Casing brake assistant – semi-automatic casing brake holder system



Retractable automatic looper GSA for easy reloading of loops



Separator cleaning flap

- Easy to clean due to smooth surfaces, large openings, front flap and the special separator cleaning position
- Separator cleaning flap – allows ideal accessibility

✓ Maintenance

- Centralized lubrication strip for easy and fast maintenance
- Maintenance- and service-friendly with few wearing parts, easily accessible by swing-off side covers

+ Optional equipment

- Consumption-oriented central lubrication for maximum reliability and service life
- Fully hygienic conveyor belt, dismantling without tools, single lane 700 or 1200 mm, double-belt 700 mm and roller extension
- Casing brake assistant – semi-automatic casing brake holder system for fastest reloading of casings
- Casing end sensor
- Sensor for end of loop supply
- Pneumatic dry sausage brake, individual control of the twin turret's casing brakes as product parameter via SAFETY TOUCH
- Automatic looper GSA 20, loop left or right
- Air-free slack filling of moulded products by overspreading, sensor monitored total spreading up to 100 mm, comfort setting in front
- Twin turret with swivel horns and 90° pivot point
- Length portioning by optical sensor or mechanical length stop 1,000 mm and 1,350 mm
- Ball joint filler connection
- String dispenser for rings
- Print mark control for centred printing format
- Intelligent Filler Clipper (IFC) Interface upon request

adjustments and setting parameters

- Swivel horn, twin turret and casing brake assistant with 90° pivot point
- Low noise level
- Processes high-quality clips – certified safe for use with food by SGS INSTITUT FRESENIUS
- Clip and loop manufacture

certified in accordance with ISO 22000

- USB port for data import and export

✓ Quality and hygiene

- Robustness and long service life guaranteed by use of stainless steel and titanium



Combinability

ES 5000

Labelling system for marking and traceability



Consumables

R-ID Clip: M, L



Function and operation

The automatic double clipping machine is connected mechanically and synchronized electrically to a filling machine. The portions are fed in precisely to the nearest gram and closed by a clip. The PC control allows a very fast and accurate signal processing. On the SAFETY TOUCH display the diagnostic system provides a direct and clear indication of the clipping machine's operational status as well an analysis of filling and clipping times. Deviations from the recipe parameters saved in SAFETY TOUCH are monitored. The operator is intuitively guided through the flat menu structure of the SAFETY TOUCH by means of self-explaining pictograms. Operator, set-up and service levels are kept clearly separated and are password protected. A high degree of process monitoring is offered by the FCA's automation.

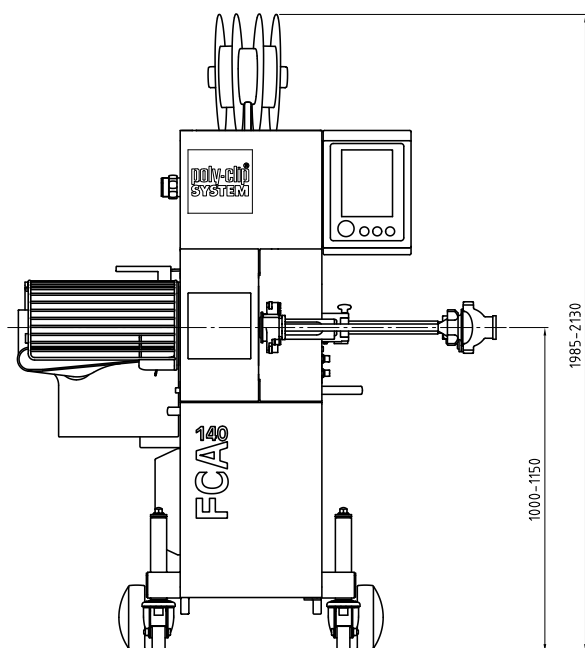


Clip system solutions

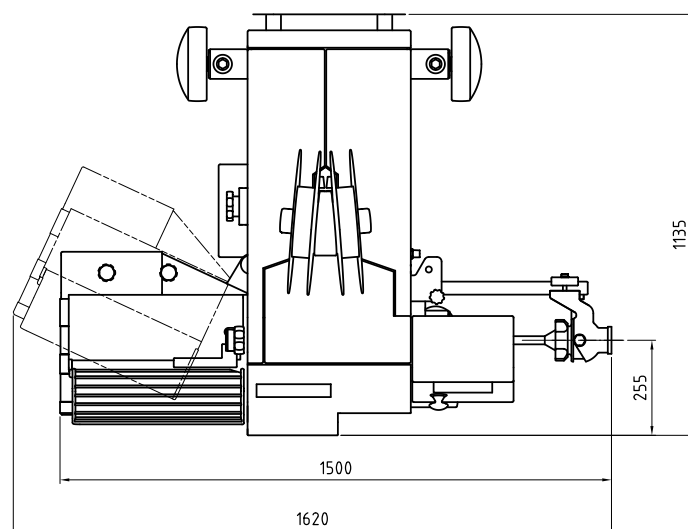
The complete system of clipping machine, clips and loops from a single source ensures efficient and trouble-free production. Original clips from Poly-clip System guarantee the highest quality. Manufacturing is subject to the most rigorous quality controls. Certified in accordance with ISO 22000 and ISO 9001 they are designed to suit the production process perfectly. With its food-proof safety coating certified by the SGS INSTITUT FRESE-

NIUS, Poly-clip SAFE-COAT technology ensures trouble-free production and if required a no-worry product warranty. Poly-clip System is the world's leading provider of clip system solutions.





Front view (Dimensions in mm)



Top view (Dimensions in mm) Length of stuffing horn 600

Technical data

Width	1,500 – 1,620 mm
Depth	1,135 mm
Height	1,985 – 2,130 mm
Weight	550 kg
Three-phase current connection	200 – 240 VAC, 380 – 460 VAC, 50/60 Hz
Power input	4 kW
Fuse connection	16 A
Compressed air	5 – 7 bar / 0,5 – 0,7 MPa
Air consumption	2.5 NL/cycle
Spreading	26, 30, 36 mm
Total spreading up to	100 mm

Dimensions, weight and consumption values vary depending on the equipment and/or machine configuration.



Maximum automation

- For the 38 – 160 mm calibre range at up to 160 cycles per minute in continuous mode
- Highest productivity through automatic, self-monitoring processes
- Voiding separator and clip shape optimised for short sausage shoulders and more slices per sausage
- Consumption-oriented central lubrication for

Why clip with FCA 160?

The FCA 160 offers unrivalled versatility combined with highest automation. It closes collagen casings up to 90 mm, fibrous casings up to 120 mm and plastic casings up to 160 mm (depending on the material thickness).



Advantages

- Highest productivity through automatic, self-monitoring processes
- Size of the voiding separator and setting of the clip pressure under servo control, can be saved as product parameters
- Incorrect settings are avoided by detection of the clip size, the punch and die
- R-ID Clip with high holding force, even up to bacteria-proof clip closure with plastic casings
- Auto-Stop System, clip sensor monitoring end of clip supply on reel; easy removal of remaining clips
- Uniform pleating and clean sausage tails due to the linear vertical voiding separator
- Highly dynamic, energy-efficient servo drive, infinitely adjustable speed
- Simple machine operation with SAFETY TOUCH – shockproof, 10" large and easy to clean
- Highest productivity; all product parameters can be recalled from the SAFETY TOUCH recipe management
- All recipes can be duplicated,



saved and restored with the SAFETY TOUCH

- Operator-friendly with individually assignable manual functions, e.g. inching mode
- Simple, ergonomic handling

Excellence in Clipping

poly-clip®
SYSTEM



FCA 160 – powerful machine for large calibres



Shortest setup time due to comfort opening of front flap



Overspreading for air-free slack filling of moulded products



Separator cleaning flap



Casing brake assistant – semi-automatic casing brake holder system

- for reloading of casing, without swing-out of the clip head
- Quick-change system for clip spacing without tools and for spreading with just a few hand-grips
- Safety casing brake with hand guard; maintaining safety distance to separator when ad-

- justed, operation without casing brake is blocked
- Operating instructions on SAFETY TOUCH. Functions and parameters are explained
- Additional safety by two-handed triggering of first clip
- Electronic hand-wheel for adjustments and setting parameters

- Adjustable conveyor belt speed for products true to the calibre
- Air-free slack filling of moulded products by overspreading, total spreading up to 130 mm
- Low noise level
- USB port for data import and export



Quality and hygiene

- Robustness and long service life guaranteed by use of stainless steel and titanium
- Easy to clean due to smooth surfaces, large openings, front flap and the special separator cleaning position
- Separator cleaning flap – allows ideal accessibility



Maintenance

- Easy access to main connections, electronics and pneumatics
- Maintenance- and service-friendly with few wearing parts, easily accessible by swing-off side covers
- Detailed display of fault messages at a glance
- Simple analysis by filtering the error list, selecting and exporting the messages



Optional equipment

- Consumption-oriented central lubrication for maximum reliability and service life
- Automatic looper GSA 20, loop left or right
- Spreading and overspreading servo-assisted
- Casing brake assistant – semi-automatic casing brake holder system for fastest reloading of casings
- Burst detection with automatic machine stop
- Sensors for loops and casing end
- Double-clip detection with fully automatic machine stop

- Conveyor belt position recognition on overspreading
- Twin turret with swivel horns and 90° pivot point
- Clean in Place (CIP) for continuous die cleaning
- Pneumatic dry sausage brake, individual control of the twin turret's casing brakes as product parameter via SAFETY TOUCH
- Length portioning by optical sensor or mechanical length stop 1,000 mm and 1,350 mm
- String dispenser for rings
- Print mark control for centred printing format
- Ball joint filler connection
- Fully hygienic conveyor belt, dismantling without tools, single lane 700 or 1200 mm, double-belt 700 mm and roller extension
- USB port for data import and export
- WS Food Standard interface for operational data acquisition
- Intelligent Filler Clipper (IFC) Interface upon request

+ Combinability

ES 5000

Labelling system for marking and traceability

✓ Consumables

R-ID Clip: M, L, XL

⏻ Function and operation

The automatic double clipping machine is connected mechanically and synchronized electrically to a filling machine. The portions are fed in precisely to the nearest gram and closed by a clip. The PC control allows a very fast and accurate signal processing. On the SAFETY TOUCH display the diagnostic system provides a direct and clear indication of the clipping machine's operational status as well as a clear error message.

A high degree of process monitoring is offered by the FCA's automation. In case of deviations from the recipe parameters saved in SAFETY TOUCH a warning is automatically displayed. The operator is intuitively guided through the flat menu structure of the SAFETY TOUCH by means of self-explaining pictograms. Operator, set-up and service levels are kept clearly separated and are password protected. The automated operation offers the greatest product safety and maximum efficiency.

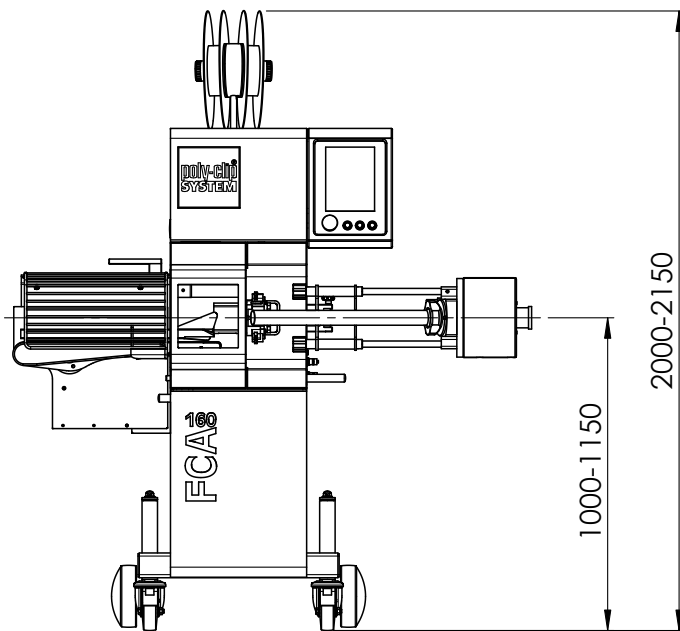
✓ Clip system solutions

The complete system of clipping machine, clips and loops from a single source ensures efficient and trouble-free production. Original clips from Poly-clip System guarantee the highest quality. Manufacturing is subject to the most rigorous quality controls. Certified in accordance with ISO 22000 and ISO 9001 they are designed to suit the production process perfectly. With its food-proof safety coating certified by the SGS INSTITUT FRESENIUS, Poly-clip SAFE-COAT technology ensures trouble-free production and if required a no-worry

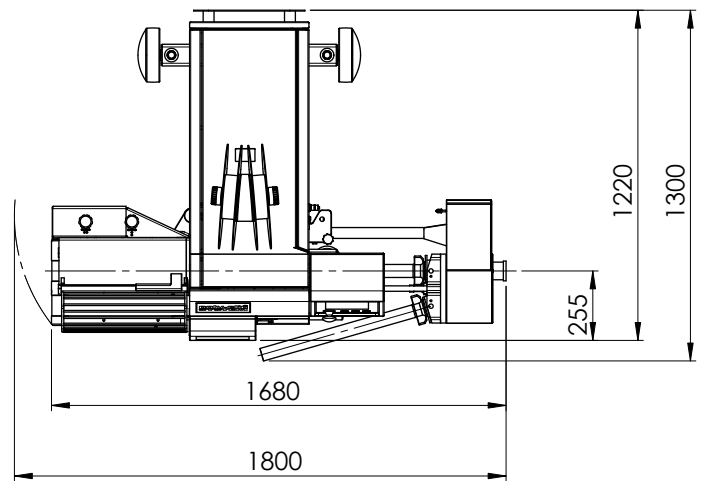
product warranty. Poly-clip System is the world's leading provider of clip system solutions.

The FCA series with smooth surfaces of stain less steel for ease of cleaning





Front view (Dimensions in mm)



Top view (Dimensions in mm) Length of stuffing horn 600

Technical data

Width	1,680 – 1,800 mm
Depth	1,220 – 1,300 mm
Height	2,000 – 2,150 mm
Weight	610 kg
Three-phase current connection	200 – 480 VAC, 50/60 Hz
Power input	3 kW
Fuse connection	16 A
Compressed air	5 – 7 bar / 0,5 – 0,7 MPa
Air consumption	1.6 NL/cycle
Spreading	26, 30, 36, 44 mm
Total spreading up to	130 mm

Dimensions, weight and consumption values vary depending on the equipment and/or machine configuration.