



Security

Innovation

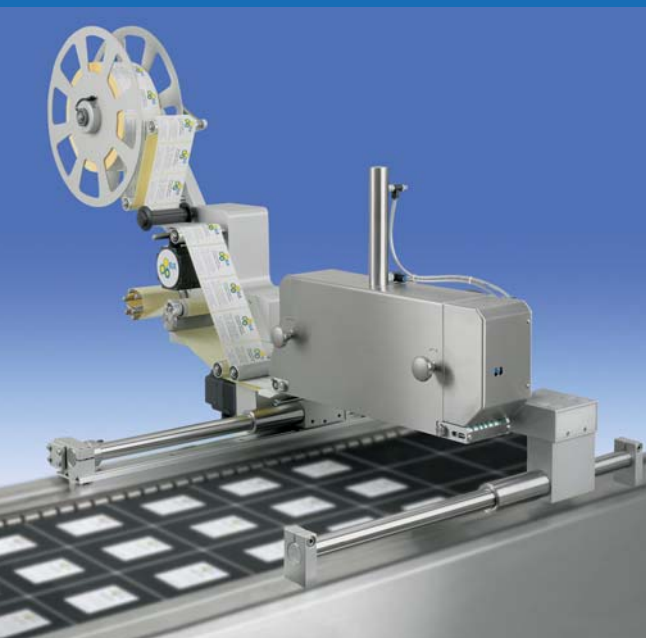
Precision

ELS 521 Cross Web Labeller

Top labelling of thermoformed packages.
Reliable technology for cost effective
production.



Labels have to carry a multitude of information. A product label, through its visual graphics, needs to reinforce the company and product image with a high degree of consumer recognition. Frequently additional product information is required as well as barcodes which identify among other things the product and its price at the point of sale. With food products there is the additional requirement for weight information, list of ingredients, price and best before date. The on-line labelling and branding of thermoformed packages meets all these conditions.



Proven Control System Technology for Flexible Production:

- Control unit in a corrosion resistant stainless steel housing.
- Single point operation, integrated membrane keypad, LCD graphics display with illuminated background.
- Production-specific operating data for film width, number of packs, tracks and rows can be stored and called up at any time.
- Status messages and diagnostic functions for largely interruption free operation.
- Multiple use of all operating data by means of CF Memory-Card.

● TECHNICAL DATA FOR THE ELS 521*

- **Label liner width**
100 mm; 150 mm; 200 mm (other widths available as optional)
- **Label size**
min. 25 x 25 mm
- **Film width**
320 - 620 mm
- **Max outer diameter of label reels**
360 mm
- **Labels wound either inside or outside, core diameter**
76 mm (recommended); 40 mm
- **Dispensing speed of labelling head**
up to 60 metres/min (optionally 90 metres/min)
- **Number of tracks and rows**
freely configurable
- **Labelling accuracy**
+/- 1,0 mm
- **Power supply**
230 +/- 10% V, 50/60 Hz
- **Compressed air supply (oil and water free)**
ca. 6 bar

ELS 521 - OP type Cross Web Labeller

Designed to be fitted onto the discharge extension of the thermoforming packaging machine. The finished packs are labelled from above.

- **Labelling Head** with micro-processor controlled stepper motor drive.
- **Control Unit** with clearly arranged operator interface.
- **Label Transport Unit** mounted at right angles to the film advance direction of the packaging machine.
- **Longitudinal Indexing Unit** for 2 to 6 row label application.
- **Mountings for fitting** the cross web labeller to the thermoforming packaging machine.

Stamp and Rotary printers, Hotfoil coders, Inkjet, Dot- matrix and Thermal-/ Thermal-Transfer printers from ELS all apply variable data to your products and goods with reliability and cost effectiveness.

*Technical data subject to alteration in the interests of technical improvements and/or operating performance.

ELS 521 Cross Web Labeller

Practical cost effective labelling of thermoformed packages. Modular Components.



Label Transport Unit

Modular construction, minimum time required for planned maintenance, minimal contamination contact due to high quality polished materials and flat surfaces as well as internally fitted components such as motors, valves and cabling. The label transport unit has quick-release services connectors to ensure minimum operating downtime.



Longitudinal Indexing Unit

For use with multi-row die formats, for 2 to 6 row label application.



End-of-reel Early Warning

For almost interruption free production: end-of-reel early warning for the timely reminder of the next label reel change, error message for torn backing paper and missing label. Ready signal and error message with visual status display.



Perfect in every Detail

Almost entirely wear-resistant ceramically coated dispensing edge.

ELS 500 Cross web labellers. The complete range of models.

ELS 510 - EF type cross web labeller – for labelling on the top web before the sealing station.

ELS 521 - OP type cross web labeller – for labelling the top web of the finished pack.

ELS 531 - UP type cross web labeller – for labelling the base web of the finished pack.

ELS 541 - OU type cross web labeller – for labelling either the top web or alternatively the base web of the finished pack.

The Special Plus:

Label and brand thermoformed packages on-line. In any shape or form.

The Decisive Edge for your Production:

The labelling technology from ELS simply offers you more. Label and brand your products more flexibly, more quickly and more reliably.

System integration from the Planning stage to Installation.

Labelling Technology from the experts, tailored to your products and applications. Innovative. High quality and value. Reliable. Accurate. Efficient. Ensuring that your products stand out as excellent.



FINELY TUNED RANGE OF PRODUCTS AND PERFORMANCE

- ☐ Labelling and printing systems in standard or special designs.
- ☐ Labelling systems for packaging and thermoforming machines.
- ☐ Coding systems for direct printing onto product packaging.
- ☐ Software programs for designing labels with texts, barcodes and graphics.
- ☐ System documentation and operating manuals in end-user language.
- ☐ Operator training and equipment familiarisation during the installation period.
- ☐ One-Stop-Shop customer service.

Consumables such as labels and printer accessories in genuine quality.



ELS - EUROPEAN LABELLING SYSTEM GMBH & CO. KG

Dammstrasse 21, D-33824 Werther/Westphalia, Germany
Tel: +49(0)5203.9196-0 · Fax +49(0)5203.9196-10
Website: www.els-gmbh.de · e-mail: sales@els-gmbh.de

