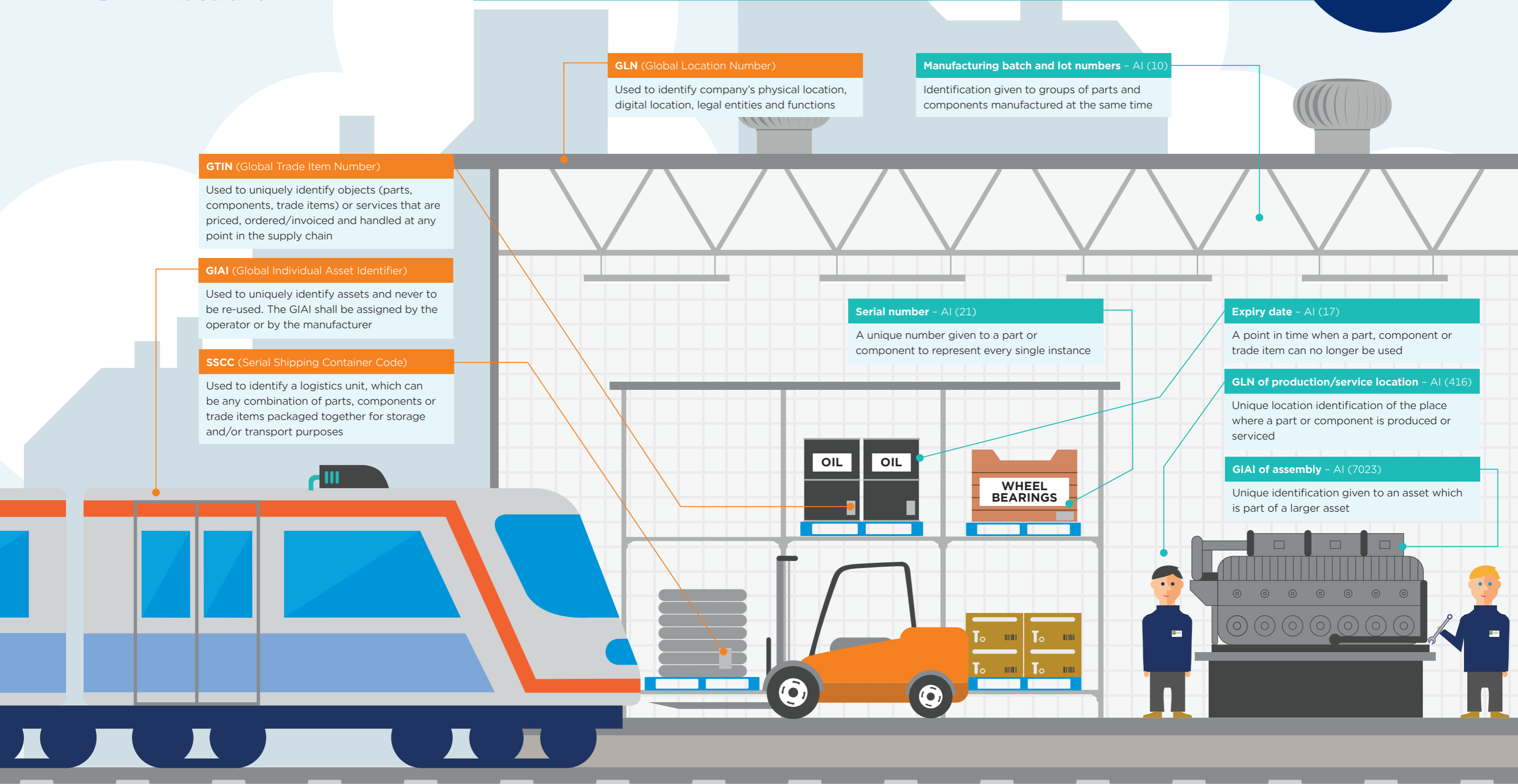
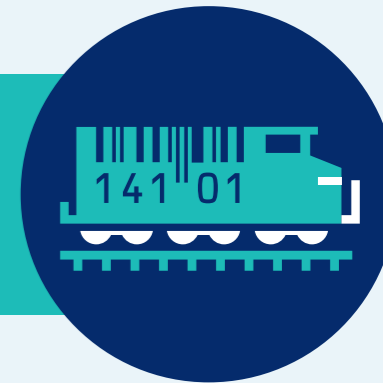


GS1 identification and data standards

Enabling improved supply chain, MRO and lifecycle management processes in the rail industry



GLN (Global Location Number)

Used to identify company's physical location, digital location, legal entities and functions

Manufacturing batch and lot numbers - AI (10)

Identification given to groups of parts and components manufactured at the same time

GTIN (Global Trade Item Number)

Used to uniquely identify objects (parts, components, trade items) or services that are priced, ordered/invoiced and handled at any point in the supply chain

GIAI (Global Individual Asset Identifier)

Used to uniquely identify assets and never to be re-used. The GIAI shall be assigned by the operator or by the manufacturer

SSCC (Serial Shipping Container Code)

Used to identify a logistics unit, which can be any combination of parts, components or trade items packaged together for storage and/or transport purposes

Serial number - AI (21)

A unique number given to a part or component to represent every single instance

Expiry date - AI (17)

A point in time when a part, component or trade item can no longer be used

GLN of production/service location - AI (416)

Unique location identification of the place where a part or component is produced or serviced

GIAI of assembly - AI (7023)

Unique identification given to an asset which is part of a larger asset

Country of origin - AI (422)

Where the part, component or trade item originated from

Internal reference number - AI (91-99)

For use in bilateral agreement only - NOT to be used in open supply chain applications

Refurbishment lot ID - AI (7020)

Identification number given to a part or component at the point of refurbishment

Functional status - AI (7021)

An identification number used where type approval may be required for the item to be sold in a particular environment or country. MUST be used in combination with a GTIN

Revision status - AI (7022)

A subordinate data element that shall be used in combination with GTIN and Functional Status to denote that a revision status (minor status) has been captured