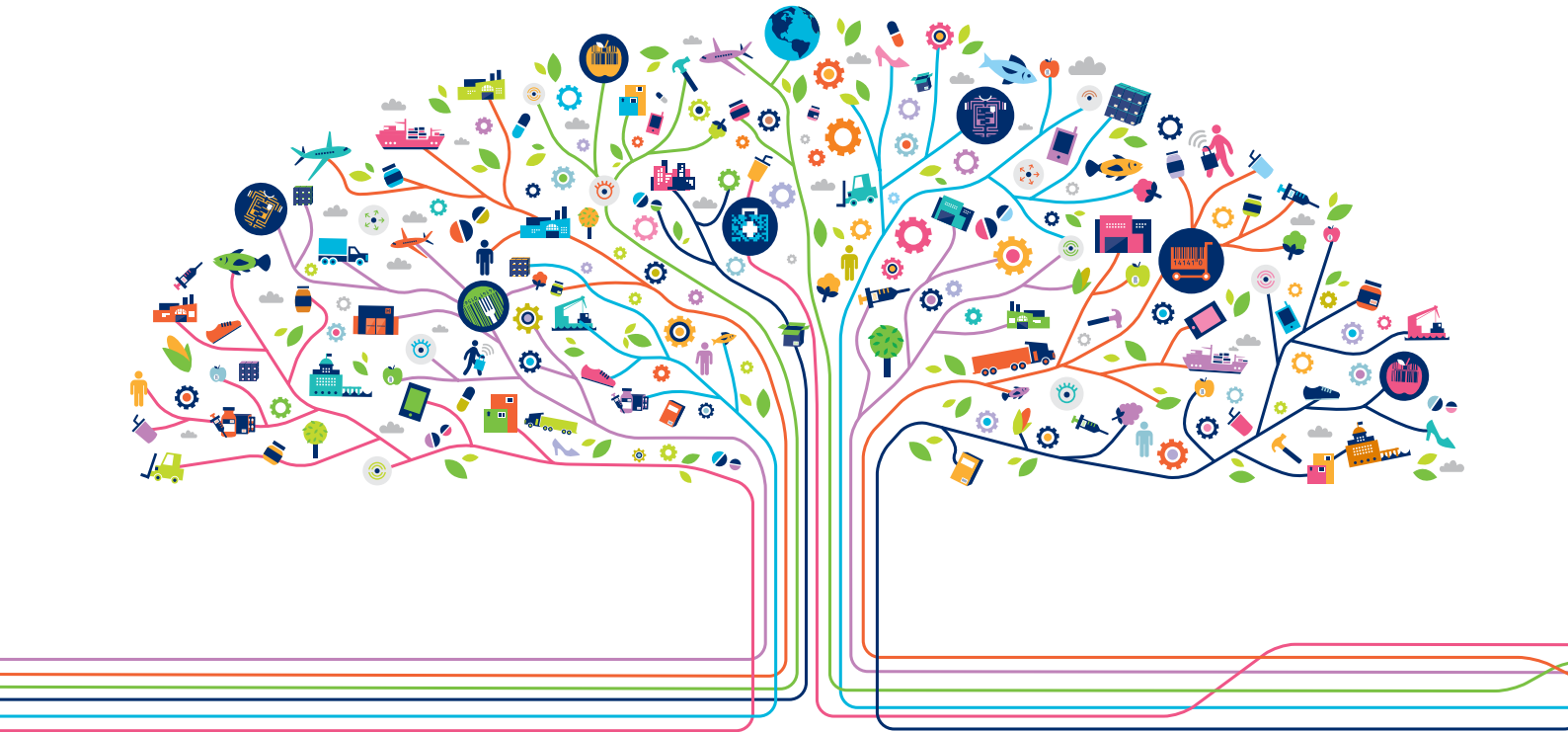




The Global Language of Business

GS1 Australia Knowledge and Event Centre

Effective 1 July 2024

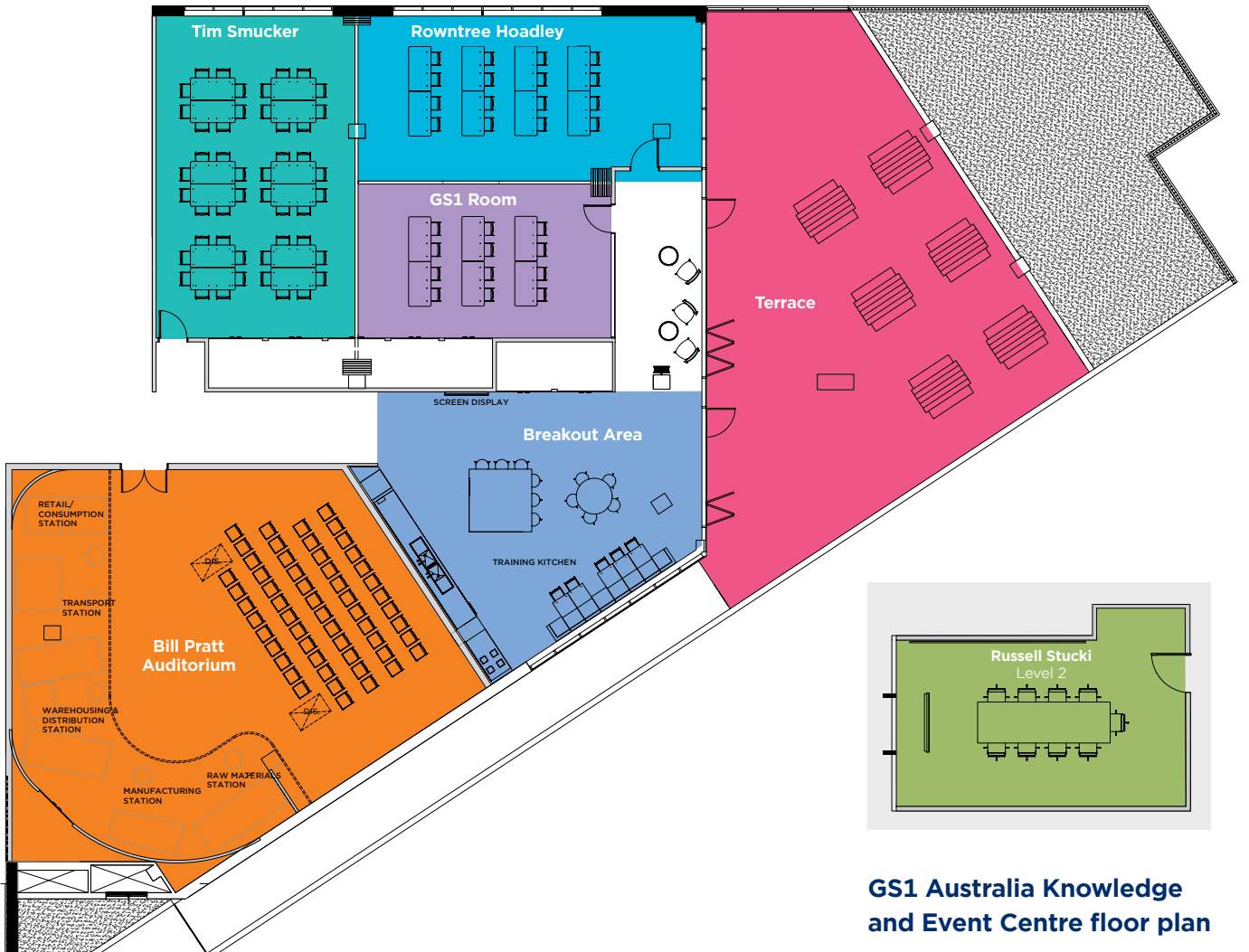




Ideally located in the business hub of the eastern suburbs and only 30 minutes from Melbourne's CBD, the GS1 Australia Knowledge and Events Centre offers outstanding meeting and training facilities. This modern, well-appointed facility accommodates different types of events from a team meeting for eight people, a seminar for 150, a presentation in the 56-seat auditorium, or other functions to suit your business meeting requirements.



We can configure the rooms in any formation you require and trust that your event will be exceptional. Our range of room options can fit all budgets. Call us on **1300 BARCODE** to arrange your next event.



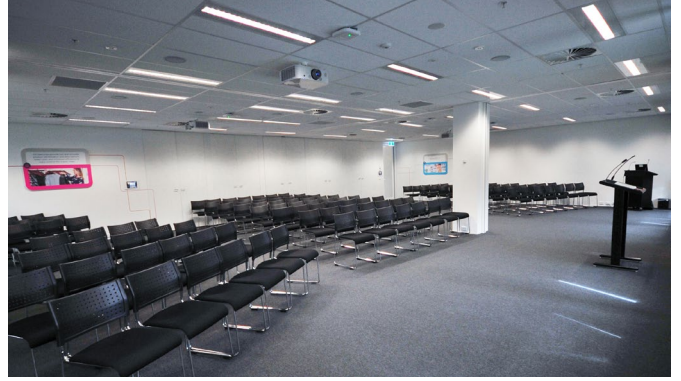
GS1 Australia Knowledge and Event Centre floor plan

ROOM SET-UP									
Room name	Theatre	Board Room	U-shape	Class room	Cabaret square	Cabaret round	Banquet	Computer lab	Cocktail
Russell Stucki Room	-	8-10	-	-	-	-	-	10	-
Tim Smucker Room	60	14	12-18	24	30	36	48	-	50
Rowntree Hoadley Room	56	-	14	12	30	30	40	10	40
GS1 Room	42	12	12	12-14	18	18	24	10	30
Bill Pratt Auditorium	56-74	-	-	-	-	-	-	-	-
ROOM COMBINATIONS									
Rowntree Hoadley and GS1 Rooms	112	14	16	24	42	36	48	-	100
Combined Tim Smucker, Rowntree Hoadley and GS1 Rooms	133	-	-	48	72	-	96	-	150
Terrace	-	-	-	-	60	-	-	-	100

Tim Smucker



All rooms combined - Theatre



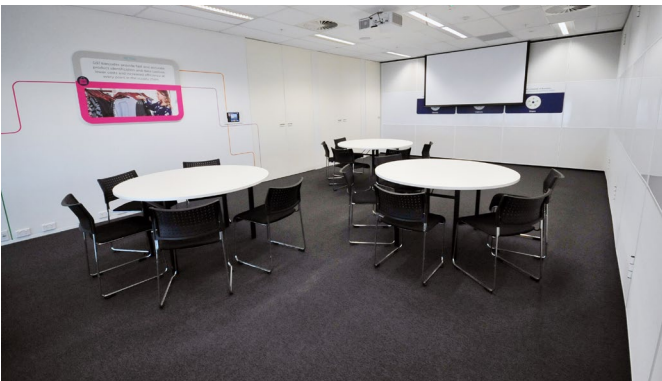
Rowntree Hoadley



Rowntree Hoadley and GS1 Room



GS1 Room



All rooms combined - Cabaret



Russell Stucki



Bill Pratt Auditorium



Breakout Area



Terrace



Room hire rates

Room name	Russell Stucki	GS1 Room	Rowntree Hoadley	Tim Smucker	Bill Pratt	Terrace	Rowntree Hoadley and GS1 Room	Tim Smucker, Rowntree Hoadley and GS1 Room	The Whole Centre	Boardroom
Room only (Prices exc. GST)										
Half day fee	\$250	\$320	\$400	\$435	\$435	\$400	\$575	\$970	\$1,200	\$500
Full day fee	\$420	\$580	\$715	\$790	\$790	\$715	\$1,045	\$1,760	\$2,150	\$900
Zoom room										
Full day fee	\$165	\$165	\$165	\$165	Supplied	\$165	\$165	\$165	\$165	Supplied

NOTE: Standard hours of operation are Mon – Fri 8am – 6pm, functions outside of these hours will incur a surcharge of \$110 on weekdays and a surcharge of \$275 on weekends.



Additional information

Hours of operation

- Monday - Friday, 8am - 6pm. Functions outside of these hours can be arranged by mutual agreement. Surcharges may apply.

Room Amenities

- Whiteboard
- Motorised projector screen
- Audio conferencing
- Microphone (lectern, wireless lapel and handset)
- Notebook connection
- USB charging points

Parking

- Offsite complimentary parking with over 100 spaces is provided subject to availability.

Internet

- Complimentary WiFi is available in all rooms.

AV equipment

- Complimentary basic audio visual equipment is available. If you would like additional equipment and technical support, please let us know at time of booking.
- Additional AV equipment and support may incur further charges. A quote will be provided to you should you require additional AV technical support.

Disabled Access

The Centre is situated on the Ground floor and has wheelchair access.

Kitchen Facility

All rooms have access to kitchen facility.

Auditorium

The auditorium is equipped with a flip desk, power point and wired network connection for each seat.

Digital Signage

Three screens are available at reception, sign-in area and breakout area for your own digital signage.

About GS1 Australia

GS1 is a neutral, not-for-profit organisation that develops and maintains the most widely used global standards for efficient business communication. We are best known for the barcode, named by the BBC as one of “the 50 things that made the world economy”. GS1 standards and services improve the efficiency, safety and visibility of supply chains across physical and digital channels in 25 sectors. With local Member Organisations in 116 countries, 2 million member

companies (over 22,000 in Australia) and 10 billion scans of over 1 billion products that carry the GS1 barcode, every day. GS1 standards create a common language that supports systems and processes across the globe.

For more information visit the **GS1 Australia website** or follow us on **LinkedIn**, **Twitter** and our **YouTube** channel.



EVENTS CONTACT

Claire Hepenstall
Senior Events Coordinator

E events@gs1au.org

GS1 Australia

Head Office, 8 Nexus Court, Mulgrave VIC 3170
T 1300 227 263 | **ABN** 67 005 529 920

www.gs1au.org

GS1 is a registered trademark of GS1 AISBL.
2318_0624

CONNECT WITH US



9 312345 024452