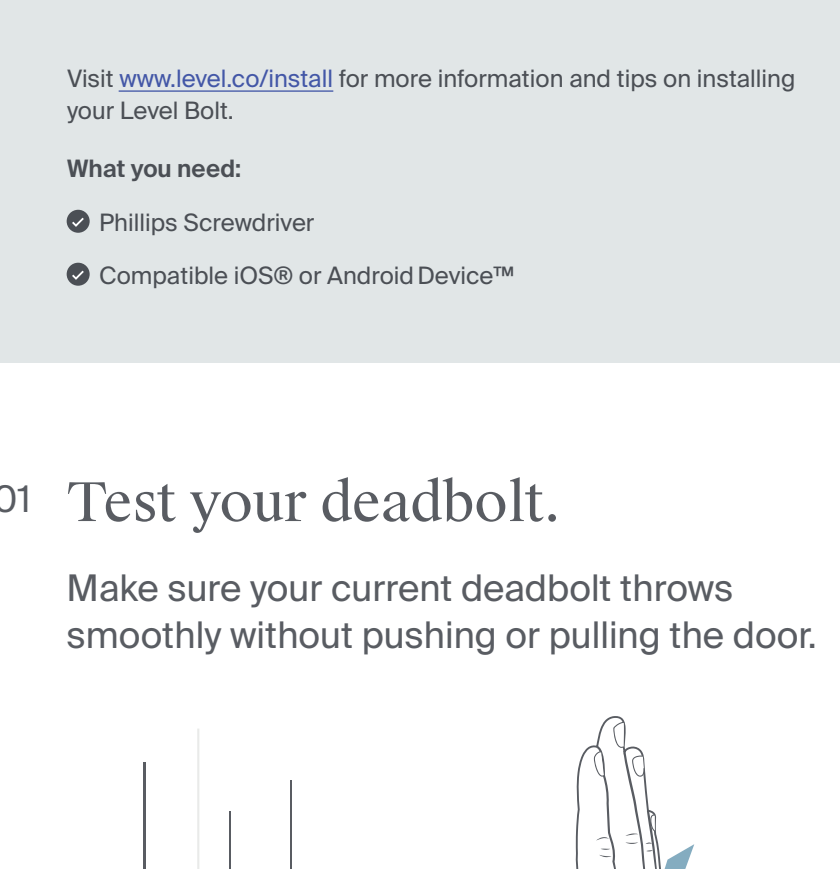


level Bolt

Support 7 days a week. Visit www.level.co/support for additional help. 2-year limited warranty. Visit www.level.co/warranty for more information.



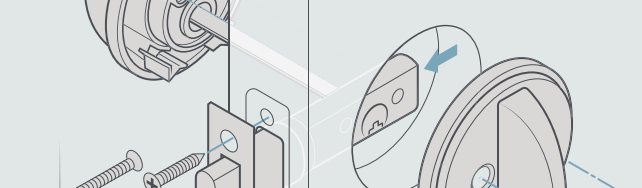
Visit www.level.co/install for more information and tips on installing your Level Bolt.

What you need:

- ✔ Phillips Screwdriver
- ✔ Compatible iOS® or Android Device™

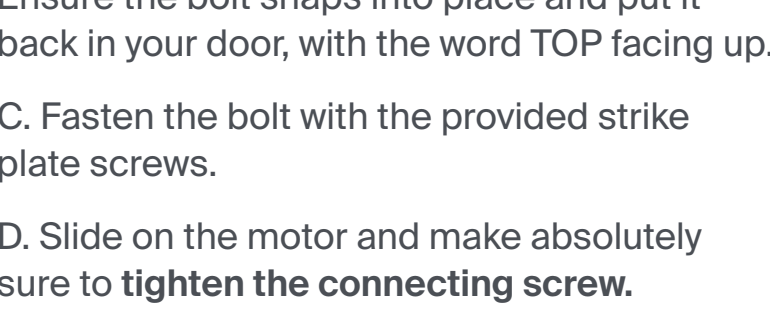
01 Test your deadbolt.

Make sure your current deadbolt throws smoothly without pushing or pulling the door.



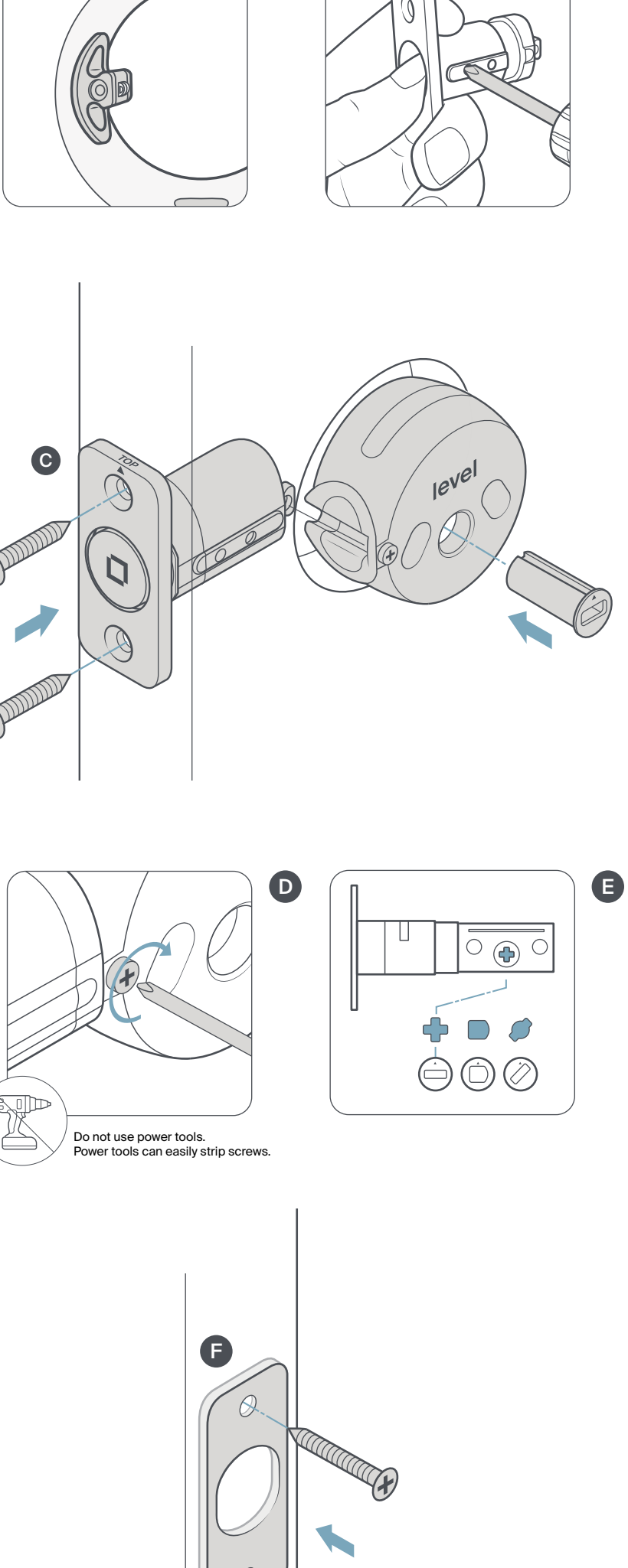
02 Disassemble your lock and keep the pieces.

Unscrew the lock housing, deadbolt, and strike plate. Store the deadbolt and strike plate in the Level Bolt box.

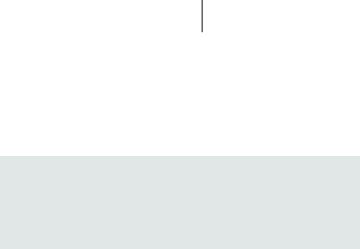


03 Install your Level Bolt and strike plate.

- Insert the included bolt into your door with the word TOP facing up. Look through the borehole—if you can see the end of the bolt sticking out, you're good to go to step C.
- If you can't, simply take it out of your door and use a screwdriver to extend the bolt. Ensure the bolt snaps into place and put it back in your door, with the word TOP facing up.
- Fasten the bolt with the provided strike plate screws.
- Slide on the motor and make absolutely sure to **tighten the connecting screw**.
- Using your previous deadbolt for reference, select the correct tailpiece adapter and insert it into the motor's center hole.
- Fasten the strike plate to your door jamb with the provided strike plate screws.



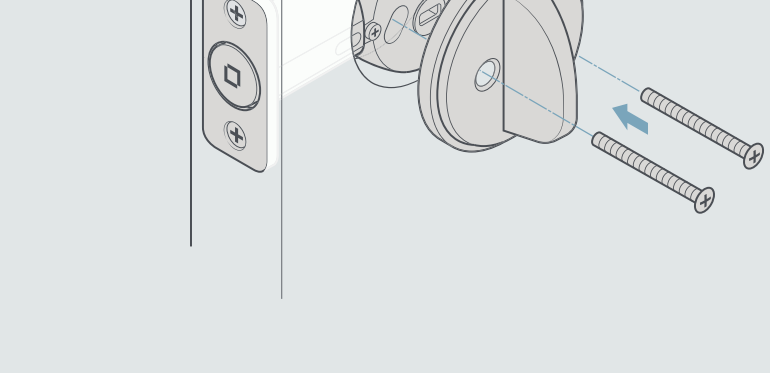
Do not use power tools. Power tools can easily strip screws.



Reassemble your lock using the original pieces.

04 Completely rotate the tailpiece in the direction to unlock the door (away from the door edge). Thread the tailpiece through the adapter and screw your lock housing back together loosely using your original security bolts.

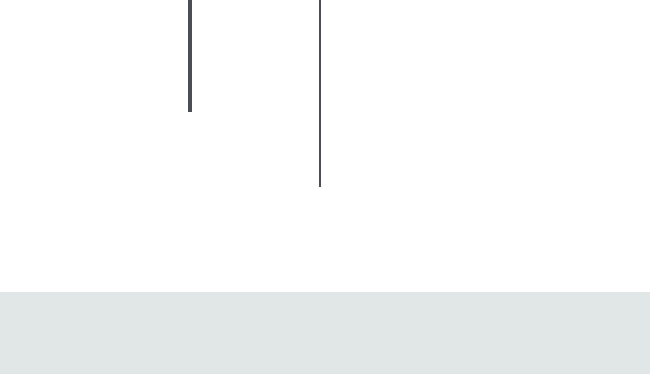
Align the two sides of your lock and manually test your deadbolt. If it doesn't throw smoothly, recenter the housing by lifting upwards, then tighten the security bolts.



05 Activate your Level Bolt.

Unscrew the cap on the end of the bolt and insert the battery with the flat (negative) end towards the cap. If you adjusted the bolt to the long position, use the included long cap instead of the standard cap. Screw the cap on tightly and you'll hear a welcome chirp.

Download the Level Home app for iOS® or Android™, create an account, and connect to your Level Bolt.



This device complies with part 15 of the FCC Rules. Operation is subject to the following two conditions: (1) This device may not cause harmful interference, and (2) this device must accept any interference received, including interference that may cause undesired operation. For more information on FCC compliance, please go to www.level.co/FCC

Although the Level Lock Bolt Edition is built to ANSI specifications, it is not an ANSI or BHMA certified door lock. You are responsible for proper installation of the Level Lock and its use with a compatible American standard deadbolt that is operating in good condition. You assume all risk and responsibility in relation to the installation and performance of the lock and any third party components and services used in relation to the lock.

Please follow these suggestions and safeguards to decrease the chances of damage to your Level Lock and to lessen the risk of harm or injury:

- Use the lock for its intended purposes only.
- Keep body parts away from the lock during operation to avoid injury.
- Do not crush, perforate, drop, or throw, or try to deform the lock or battery.
- Do not short external contacts or wires, expose your lock or battery to water, liquids, or open flames or lit substances, or dispose of them in fire, solvents, or water.
- Do not use the lock or battery if they aren't working properly or have been damaged or cracked.
- Dispose of the lock and battery in accordance with local requirements.
- Do not charge CR2 lithium batteries.

Battery life varies with usage.
Caution: This product comes with small parts and parts with sharp edges that may cause injury or create a choking hazard. To avoid injury or damage, keep away from children.

Revision 1.0

