



## POSITION SENSOR FOR UNDERGROUND MACHINERY



### Precision for Harsh Environments

In underground operations, where precision and durability are essential, intelligent solutions are crucial for enhancing both efficiency and safety. Jumbo drills, which operate under extreme conditions such as dust, vibration, and heavy wear, require advanced position sensing systems. POSITAL's position sensors are specifically designed for these harsh environments, delivering robust and accurate feedback along with adaptive, real-time data processing to optimize Equipment performance.

### Why POSITAL?

The Transparent, Efficient and Trustworthy Way To Get Any Sensor!

- > Absolute Multiturn Measurement
- > No Battery, No Maintenance
- > Self-Powered Sensing
- > Robust & Durable Designs
- > Large Product Portfolio – Mass Customization
- > Leaders in Innovation Technology
- > Over 60 Years' Experience
- > 36 Month Warranty

### Join Our Network!

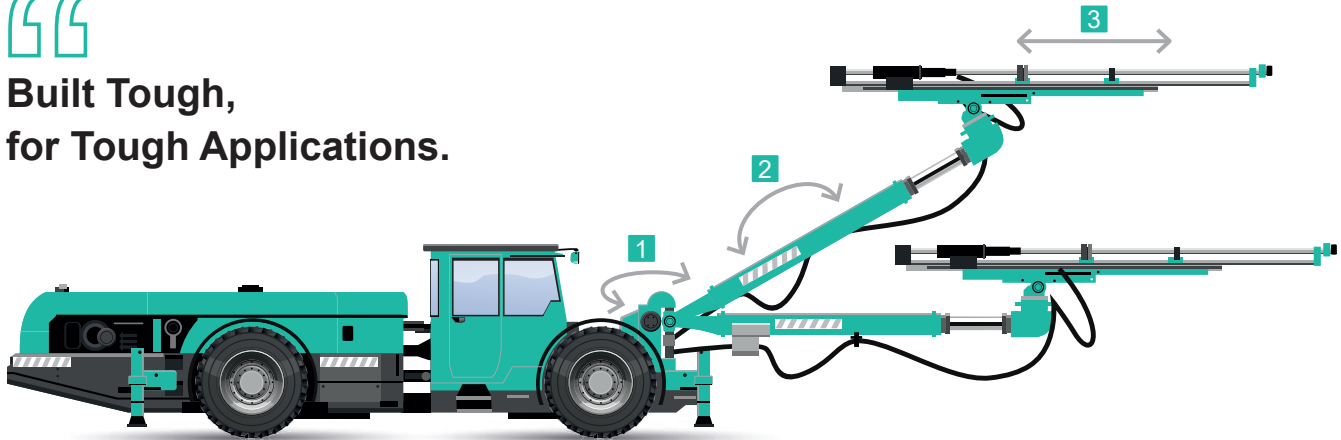


[www.posital.com](http://www.posital.com)

## POSITION SENSOR FOR UNDERGROUND MACHINERY



**Built Tough,  
for Tough Applications.**

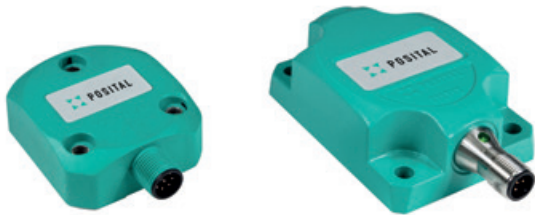


### 1 Rotary Encoders for Rotational Positioning



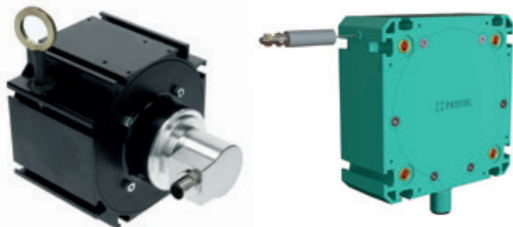
- > Environmental Rating: Up to IP69K
- > Heavy Duty Design
- > High Resolution and Batteryless Multiturn
- > Large Variety of Mechanical Designs and Electrical Connections

### 2 Dynamics Inclinometer for Tilt of the Boom



- > Gyrostabilised Inclination Sensors
- > IP96K, Shock and Vibe Designed for Off-highway
- > CAN and J1939 Interface Available

### 3 LINARIX Linear Sensor for Telescoping Boom



- > Linear Accuracy up to 0.35 mm
- > User Defined Programmability
- > Up to 10 m (33 ft) Range
- > Different Mechanical Designs and Material
- > Large Variety of Interfaces

