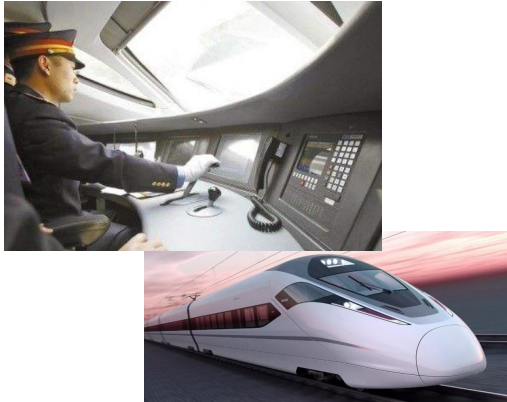


## THROTTLE LEVER (SPEED CONTROL)

**Machine Category:**

Operating lever of brake

**Industry:** Railway/Control Equipment

**Country:** China

**Product Series:**

UCD-SSI

**Specification:**

SSI interface, single turn with 14 bits resolution, preset function, compact design (less than 30mm thickness)

**Competing Technical Solution:**

Resolver of local brand

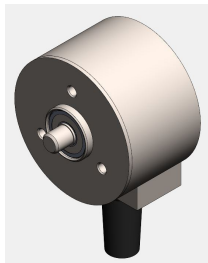
**Benefits of Technical Solution**

Resolver ages during the operating of lever due to long-term effect of heat and vibration. POSITAL's solution raised the reliability of the control system, and SSI provides much more stable signals.

**Reasons for Choosing POSITAL**

Strong relationship between our partner with the end customer. Being able to customize this product for CRRC and made it and successfully passed test. End customer is satisfied with both sales channel and POSITAL.

**Author:** CLU / ZXU



Customized Product



**Confidential!** For internal use and training of authorized sales partners of POSITAL only.  
Information may not be disclosed to third parties!

AMERICAS  
FRABA Inc.  
1 N Johnston Ave, Suite C238  
Hamilton, NJ 08609, USA  
T +1 609 750-8705  
[www.posital.com](http://www.posital.com), [info@posital.com](mailto:info@posital.com)

EUROPE  
POSITAL GmbH  
Zeppelinstrasse 2  
Köln 50667, GERMANY  
T +49 221 96213-0, F +49 221 96213-20  
[www.posital.eu](http://www.posital.eu), [info@posital.eu](mailto:info@posital.eu)

ASIA  
FRABA Pte. Ltd.  
30 Kallang Place, #04-16/17  
Singapore 339159, SINGAPORE  
T +65 6514 8880, F +65 6271 1792  
[www.posital.sg](http://www.posital.sg), [info@posital.sg](mailto:info@posital.sg)

## ADDITIONAL INFORMATION

### Important Remarks

