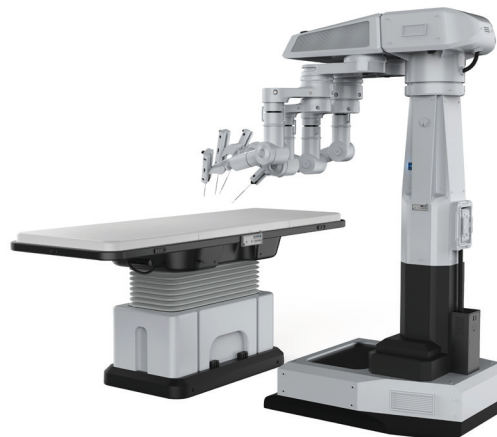
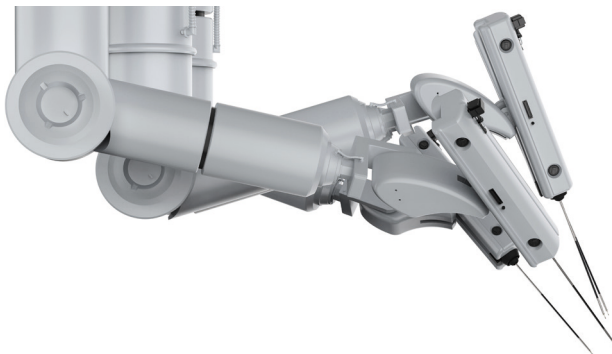


DESIGNED FOR SURGICAL ROBOTS

Optimal Control of Surgical Robots



With more autonomous robotics being introduced to medical applications, POSITAL's family of KIT encoders, whose features include compact size, no battery – no maintenance, high reliability, attractive cost and absolute position feedback, becomes an ideal position sensing solution for state-of-the-art medical equipment, especially for surgical robots.

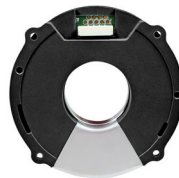
Solutions

Kit Encoder Family



- > High Accuracy
- > Compact Size
- > Low Noise & Resonance
- > No Battery, Low Maintenance
- > Open Sources Interfaces:
BiSS-C, SSI

Hollow Shaft Kit Encoders



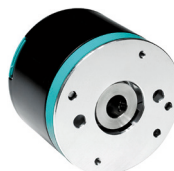
- > No Battery & Gear-Free
Multiturn Absolute Position
Feedback
- > Resolution up to 19 Bits
- > Slim Design: 18mm Thickness
- > Non-Contact Measurement
Principle, No Mechanical
Wear

22mm Kit Encoders



- > Small Frame Size
- > Easy to Install
- > Auto Calibration, No Special
Equipment Required
- > Up to 12000rpm

36mm Kit Encoders



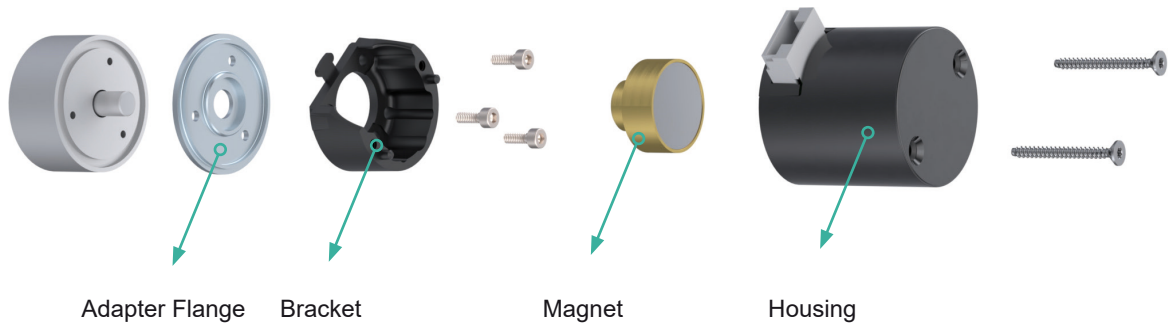
- > Insensitive To Dust & Moisture
- > Singleturn Resolution: 17 Bits
- > Multiturn resolution: 16 Bits
- > Temperature : -40° to +105°C

Find more via our Product Finder

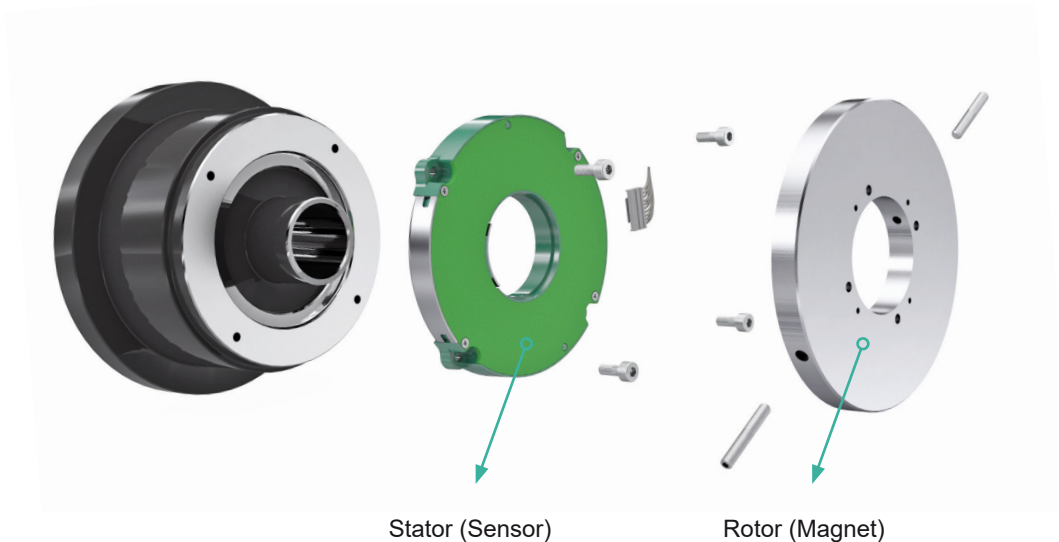


DESIGNED FOR SURGICAL ROBOTS

Optimal Control of Surgical Robots



The unique design of the 22mm diameter kit encoder fusion sensing technology features uninterrupted, battery-free multiple turns, each powered by a Wiegand pulse. The gear-free, compact and economically optimized concept is ideal for integration into servo, stepper or BLDC motors. No special equipment is required for the installation. There are various mechanical configurations available with the 22mm outer diameter. Enhanced signal processing software enables high-resolution position measurement with excellent latency compensation.



POSITAL's hollow shaft kit encoders offer a wide multiturn range without the need for a battery or gear system. They have a slim design with just 18mm thickness. They offer a resolution of up to 19 bit and are designed for integration into hollow shaft motors and robots. In robotic systems, the hollow shaft design enables cables and compressed air to be routed inside of the robotic arm. The singleturn system is based on capacitive technology and is combined with POSITAL's proven Wiegand multiturn technology.

Join Our Network!



www.posital.com