

| JUNE 2012 |

MAN *news*

NEWSLETTER N°

1



FUJAIRAH 2 - POWER & WATER PLANT | UAE

**A Growing Expertise
in Industrial
& Infrastructural
Projects**

www.manenterprise.com

CONTENTS

EDITORIAL	3
MAN ENTERPRISE CULTURE	4
MAN HOLDING	
> Employees by nationality	5
IN-FOCUS	
> Iraq	6
AWARDED PROJECTS	
> Qatar, Abu Dhabi, Lebanon	7
> Metrix	8
> Tecman Industry	9
NEW IMPLEMENTATION	10
BOOSTING A PROJECT	11
INDUSTRIAL & INFRASTRUCTURAL EXPERTISE	
> Fujairah 2, Power & Water Plant	12
> Mudeirej Bridge	13
GOING GREEN	14
ACTIVITIES & EVENTS	
> General Management Review	15
> MAN Enterprise LTD and MAN Enterprise Qatar Workshop	15
> Forward Job Fair	16
> AUB Job Fair	16
> Business Exhibition	17
> Tecman Industry Workshop	17
> MAN Enterprise LTD Gathering Event	18
> MAN Enterprise Qatar - METRIX Year End Party	18
TRAININGS	19
SOCIAL	19
SPORTING ACTIVITIES	20
COUNTRY OVERVIEW	22
CERTIFICATIONS	23
ADDRESSES	24

EDITORIAL

Dear MAN Team,



| Mr. Michel Abi-Nader |

It is not by coincidence that MAN succeeded and overcame the crisis of the construction industry during the past few years. Nor by chance did we maintain our growth and turnover while others were struggling to stay in the market. My colleagues, I can only say you are the 12,000 individuals worldwide who are the heart and soul of MAN today. I feel humbled when I see your devotion to this iconic enterprise that you shaped with your own hands. Congratulations! It is a legitimate reason for us to feel pride to be part of this big family. We are a company that started with a vision and has been built on values and hard work.

However, as the competition increases and because we believe that our best years lie ahead of us, MAN's leadership team created a new long term vision to strengthen MAN's position in the market for the decades to come. Firstly, MAN is planning to follow diversification in its portfolio and increase synergies through targeting unusual projects, expanding references, and enhancing qualifications. This will boost our growth not only during successful economic times but during less prosperous periods as well. Moreover, following the trends of the big international companies aiming for projects at their early conceptual stage, MAN can increase value in terms of innovation and more sustainable projects that suit our new environment.

Secondly, we are planning to venture into new markets which we believe is an essential move from being a regional company to an international player. This strategy will help us bid for new sectors and enter new fields.

Again, I pledge my commitment to you and tell you that I am working hard every day to match your dedication and dynamic commitment to this enterprise. MAN, a workplace of passion and discovery, must continue to be innovative to ensure a clear career path and continuity for each of our members to flourish and achieve their goals. We all have a stake in shaping that future, and there's no company in the world that can succeed without its employees.

Colleagues, together we will define the next generation of MAN.

Michel Abi-Nader
Chairman

— MAN ENTERPRISE CULTURE

Every person aims for success; it is the ambition of all professionals who want to lead a solid and prosperous carrier.

However, the notion of success in our part of the world has been tainted with a greedy perception of building fortunes the easy way via short cuts regardless of the consequences.

At MAN Enterprise we learned it the different way: Success has strict rules to attain. It is a long lifetime process that takes a lot of devotion, hard work, integrity and dedication to excellence.

Nevertheless, the most important amongst all is honesty – every person at MAN Enterprise is oriented from day one that whatever technical skills, knowhow or any other talents or capabilities they have, must be crowned by an honest approach towards each other and most important towards our clients.

This approach is the key element to build a strong and long term relations with our “Partner Clients”, the sense of partnership shall prevail between MAN and its clients.

The project owners “Our Clients” are not only a source of income to the company, they are rather the source of building a solid reputation and assured continuity.

“Building Concrete Relationships” MAN Enterprise slogan for many years by now materializes the culture of the company and stresses on building not only concrete structures and lasting landmarks but most important on creating relations with those who own those structures as well.

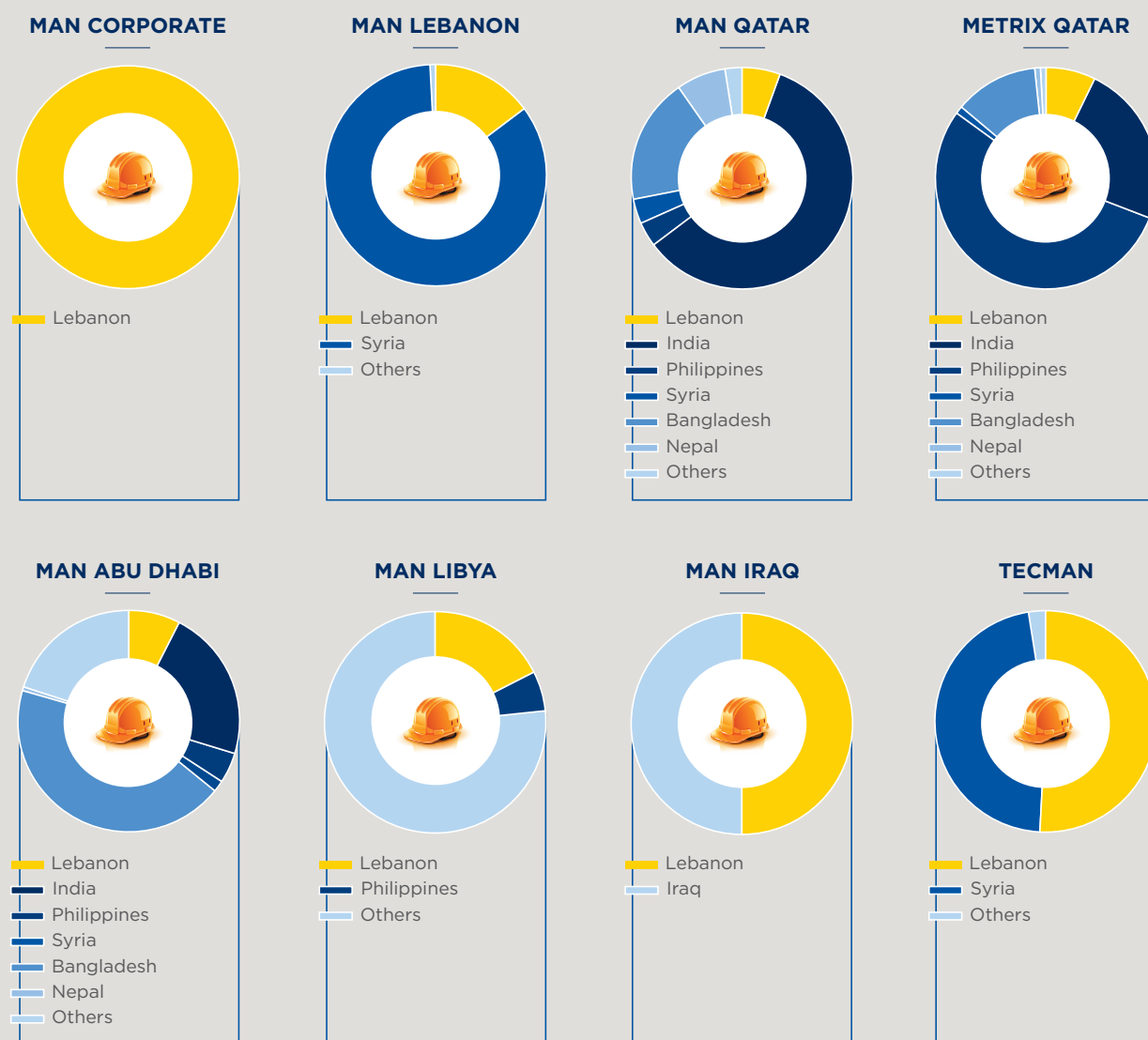
These principles are the key behind our continuous success story, that all MAN Enterprise “Individuals” and “Teams” shall always remember & keep in mind.

George Menassa

*Director of strategy
and business development- Abu Dhabi*



MAN HOLDING | Employees by Nationality |



MAN Holding is grouping human a capital from 24 different nationalities. Employees are distributed according to their skills.

- Algeria
- Bangladesh
- Canada
- Ethiopia
- Egypt
- France
- Greece
- Great Britain
- India
- Iran
- Jordan
- Iraq
- Lebanon
- Libya
- Morocco
- Nepal
- Oman
- Pakistan
- Palestine
- Philippines
- Sri Lanka
- Sudan
- Syria
- Tunisia
- USA
- Yemen



LEBANON | UAE | QATAR | IRAQ | LIBYA

MAN is expanding: New Area IRAQ – BASRA



| Perspective Al Basra Sports City Hotel - Iraq |

Iraq, an ancient land rich with history that dates back thousands of years, is once again rising from the ashes after 30 years of turmoil and destruction.

The country is rebuilding with promise and aims to be part of the modern Middle East's new era of glory.

At the end of 2011, MAN Enterprise was awarded a prestigious project in Basra, the second largest city in Iraq, located in the south of the country near the Arabian Gulf.

Basra is one of the most historical cities in Iraq, and it contains the country's main port. The Basra Governorate is the richest in Iraq; it contains 65% of the country's oil field reserves and has great potential for the booming construction industry. The people are friendly and the city is secure so that natives, as well as foreigners, feel safe strolling through

the streets. However, the city has many areas in which to develop, namely sports, entertainment, and leisure activities.

MAN's Design & Build project of Basra's first five star hotel will help aid in the development of the city. This 200+ room complex, including a shopping mall, is located in the Basra Sport City Complex which contains a 60,000 seat stadium. Basra will host the Arab Gulf Football Tournament in 2015, just a mere 3 years from now.

The project is estimated to be completed in 20 months time, starting from the beginning of 2012. The design is currently in progress and the site offices

are mobilized as well as the head office. Piling is due to start soon.

Basra serves as an entry point for MAN into Iraq, and it plans to investigate other areas of the county and opportunities in the near future. For now, MAN Enterprise is proud to be a participant in the reconstruction of Iraq. MAN is introducing new and innovative ideas while sharing their extensive experience in construction that will revolutionize the quality and standards of building for years to come.

Rafid Shahristani
Area General Manager
MAN Enterprise – Iraq

AWARDED PROJECTS

OXYGEN PARK AT EDUCATION CITY | DOHA, QATAR



| Oxygen Park at Education City - Doha, Qatar |

This project consists of the execution of the Oxygen Park, a world class state-of-the-art parkland space located in the Education City of Doha, Qatar. Oxygen Park will be the largest open space within the campus used for recreation, sports, horticultural, educational, and the hosting of large events. It is comprised of parkland, a people mover corridor, sports bowls, hard and soft

landscape features, water features, a vine harbour, covered walkways, an entertainment bowl, and follies.

- > **Client:** Qatar Foundation
- > **Consultant:** Parsons
- > **Start Date:** Apr - 12
- > **Expected Completion Date:** Dec -13

DAMAC TOWER | BEIRUT



| Perspective Damac Tower - Beirut, Lebanon |

The DAMAC Tower is situated in the heart of Beirut and is intended to meet the luxury, high quality and aesthetic living standards through a unique partnership with world renowned Italian designer VERSACE Home.

The tower consists of four basements, a ground floor and 28 upper floors. MAN's scope of works comprises earth, civil, structural, architectural, electromechanical and internal finishes works including testing and commissioning

- > **Client:** Damac Properties Lebanon SAL
- > **Consultant:** Erga Group
- > **Start Date:** Feb - 12
- > **Expected Completion Date:** Apr - 14

WEST SIDE 4-STORY CAR PARK (WSCP) | DOHA, QATAR



| Perspective West Side Car Park (WSCP) |

The WSCP is a high quality 2,959-car park space located in the Qatar Education City. It provides linkage to the People Mover System (PMS) station for onward travel to final destinations in Education City.

The superstructure car park is four stories high with an approximate footprint of

45.000sq.m. The substructure levels consist of a basement level concourse, PMS stations, and a bus concourse. The external cladding of the building is created by a matrix of aluminum sections arranged in three different planes.

Staircases, escalators, and lifts are provided to link the basement and upper levels. MAN's scope includes the civil, electrical, mechanical and finishes works.



| Perspective West Side Car Park (WSCP) |

CONSTRUCTION OF A MULTI-STORY PARKING STRUCTURE | ABU DHABI, UAE

This multi-story parking structure consists of three underground floors with a proposed roof parking accounting for 813 car spaces, and the associated improvements to the public realm, surface parking and existing sector roads and utilities. In addition,

there is a one story temporary steel structure car park accounting for 689 car spaces which will be designed and built in an adjacent plot prior to the construction of the underground car park.

- > **Client:** Department of Transport (DOT)
- > **Consultant:** Parsons
- > **Start Date:** Jun - 12
- > **Expected Completion Date:** Sep - 14

DR. FETAIS OFFICE BUILDING | DOHA, QATAR



1.



2.



3.



4.

The project comprises the construction of 3B+G+22 floor office tower with 42,000m² of built-up area in Lusail City. The tower includes a concrete frame, curtain walling, louvers, stone and aluminum the cladding, internal finishes, and MEP Works.

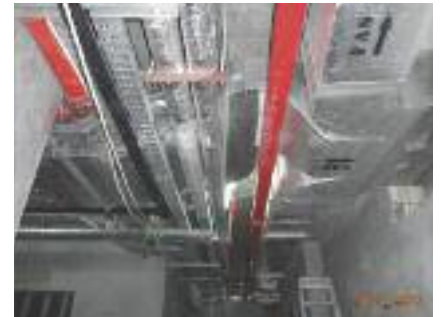
The Dr. Fetais project was constructed and handed over on May – June 2012

- 1 | Fire Pump Room (Jockey, Electric and Diesel Pump)
- 2 | Mechanical Installations in Basement Levels
- 3 | Mechanical installations in Technical floor
- 4 | Water Supply Pump Room: showing Booster pumps and Multimedia filter

VIVA BAHRIA PLOTS 22 & 23 | DOHA, QATAR



| Connection of chilled water pipes to air handling unit |



| MEP Services inside Hallway |

The Project consists of 2 Residential Towers of 88,000m² built-up area on two adjoining plots. Each Tower consisting of apartments on 22 levels, 4 levels of podium & car park and chalets-villas at the beach front.



| Electrical Services at Floors Lobby (Cable Trav, EMT) |

TECMAN INDUSTRY | INTERIOR DECORATION EXPERTISE & STEEL STRUCTURE

LEBANESE PARLIAMENT HOUSE | BEIRUT, LEBANON



The project consists of refurbishing the entire building including the noble and common area. The full fit out contract includes wood joinery, tiling, ceiling, gypsum stone cladding and paneling, gypsum works, painting and an FF&E contract.



| Lebanese Parliament House |

MOVENPICK AMBASSADOR HOTEL | ACCRA, GHANA



The project is for a 5 star hotel and resort that consists of 259 rooms and suites. The work includes wood joinery works, metal works, and an FF&E contract.

| Movenpick Ambassador Hotel |

NATIONAL CONVENTIONAL CAR PARK (NCCP) | DOHA, QATAR



the project consists of 4 levels of parking space and one basement area connecting different sections of the project with an approximate covered area of 35,000 m²



| National Conventional Car Park (NCCP) |

| National Conventional Car Park (NCCP) |

NEW IMPLEMENTATIONS

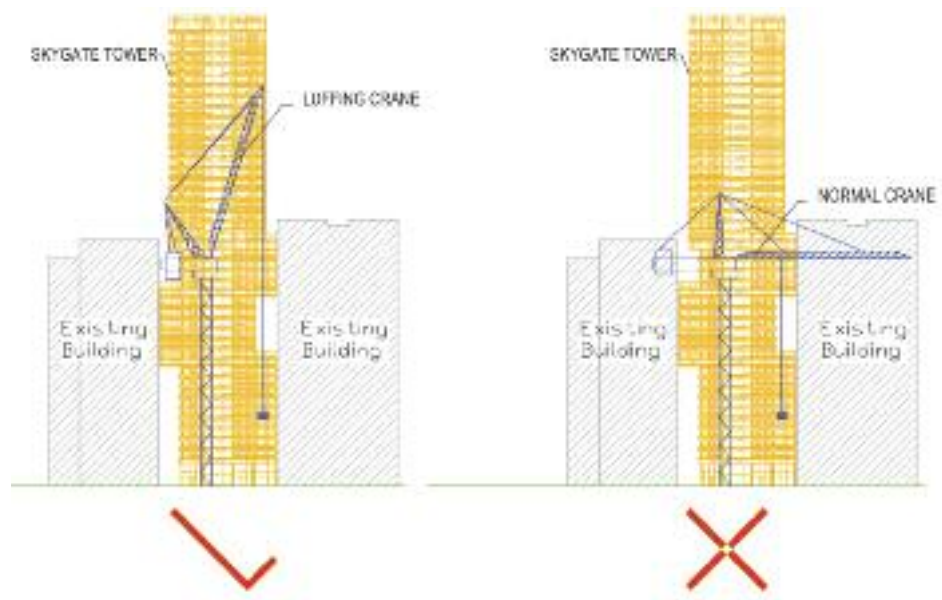
LEVEL LUFFING CRANE IN SKYGATE PROJECT | BEIRUT, LEBANON

A luffing crane is a crane with which a load can be moved to or from the crane horizontally.

Level luffing crane

Normally a crane with a hinged jib will tend to have its hook also move up and down as the jib moves (or luffs). A level luffing crane is a crane of this common design, but with an extra mechanism to keep the hook level when luffing.

This type of crane is used in the Sky Gate Project due to the existence of two adjacent buildings as shown in the following figure. It is practically impossible to hoist material to the construction site by using a normal or strut-type cranes. The buildings to the right and the left of the tower acted as obstacles to the jib of such a crane. This is why, in this scenario, a luffing-type crane was ultimately the best choice considering that its moving jib could easily dodge the buildings.



HYDRAULIC CLIMBING SYSTEM IN SAMA BEIRUT, SKYGATE AND CREDIT LIBANAIS HEADQUARTERS | BEIRUT, LEBANON



| Sama Beirut Project - Beirut, Lebanon |



| Sama Beirut - Beirut, Lebanon |



| Skygate Project - Beirut, Lebanon |



| Credit Libanais - Beirut, Lebanon |

The Automatic Climbing System (ACS) is a hydraulically operated self-climbing formwork system used for the construction of tall concrete structures such as building core walls and bridge pylons.

Tall concrete structures have historically been formed with crane lifted formwork often referred to as "jump" forms.

These systems require a worker to ride the formwork as it is raised to its next position in order to insert reties through the previously cast lift to secure the form. This procedure requires extensive crane time and is very slow, unsafe and unproductive for tall structures where the concrete walls are typically on the critical path.

However, the Hydraulic Climbing System's benefits are in reducing the level of risks and accidents, no crane is required, faster erection, lesser manpower is required, no scaffolding required and easier inspection.

— BOOSTING A PROJECT

CREDIT LIBANAIS HEADQUARTERS | BEIRUT, LEBANON

On March 8, 2012, part of the Raft Foundation, relative to the Credit Libanais Headquarters project, was casted. The poured volume of concrete was equal to 1,140 m³ and the entire casting operation took only 6h40m which is equivalent to 171 m³/hr (record time)!

From a logistical point, four batching plants, equipped with chillers, participated in the concrete supply process. Five pumps were propelling concrete on site and 450 people were involved / mobilized on and off-site in order to successfully complete the operation.



| Credit Libanais Headquarters |



| Credit Libanais Headquarters |

— INDUSTRIAL & INFRASTRUCTURAL EXPERTISE

FUJAIRAH 2, POWER & WATER PLANT | UAE



The Greenfield power generation and seawater desalination plant was launched, with 2000 MW of net power capacity and 130 MIGD of net water capacity, among which 30 MIGD were the outcome of a reverse osmosis process for which MAN Enterprise executed the civil and structural works.

| Fujairah 2, Power & Water Plant |

MUDEIREJ BRIDGE - FRP SYSTEM | LEBANON



| Mudeirej Bridge, Lebanon 430 M Long, Two Way Bridge, Max. Height 70m |



| FRP Installation Works |

— INDUSTRIAL & INFRASTRUCTURAL EXPERTISE

The Mudeirej Bridge is the highest overpass in the Middle East. It is located in Hammana and it constitutes a vital link between Mount Lebanon and the Bekaa Valley. Unfortunately and during the summer war of 2006, the bridge was severely damaged by the bombardments especially the southern section.

MAN Enterprise accepted the challenge of participating in the reconstruction works of the Mudeirej Bridge, in particular the demolition works and the repair works of the damaged foundation and vertical structures. MAN exceeded expectations with the project and a new achievement was added to its outstanding record in the construction industry.

A special concrete repair technique, Repair by Fiber Wrapping (FRP System), was successfully implemented by MAN as part of the reconstruction works.

FRP System was applied to piers 5 and 6 of the northern section of the bridge.

The methodology of work related to this repair system can be summarized as follow:

Preparatory Works:

First of all, the concrete surface of the pier is sandblasted to remove the paint and all damaged areas should be chipped to eliminate unsound concrete and loose particles.

Next, the cracks are injected by SikaDur 30 or 31 and the spalls are filled with SikaDur 30 or SikaRep Mortar / SikaGrout 200 depending on the width and depth of each spall.

Finally a Surface preparation is conducted in order to remove protrusions, sharp corners, irregularities, laitance and/or dust from the concrete surface.

Application Works:

The first step consists of applying a surface primer composed of SikaDur

330 resin on the pier surface which shall receive the FRP fabric.

In parallel a sufficient workable quantity of the same SikaDur 330 resin is applied on the FRP fabric (SikaWrap 100G) and spread evenly until the reinforcement is fully covered and saturated thoroughly with resin. Subsequently, the fabric can be fixed by using a roller.

The same procedure is applied for the installation of the consequent FRP layer(s). The number of FRP layers to be applied at the various levels of the pier is determined by the study / calculations of the specialist.

Regarding the joint at the end of fabrics, a minimum overlap of 15 cm in the longitudinal direction is to be secured. No overlap is needed between adjacent bands of fabric. It is important that the overlap be staggered for multiple layers. If for any reason the works are stopped at an intermediate FRP layer phase, then the outermost layer is to be protected from sunlight by an overcoat of SikaDur 330 which will be abraded later on (sand paper, abrasive pad, etc ...) before receiving the next layer.

The final FRP layer is protected by a protective coating composed of Sika-Gard 552W(primer) and SikaGard 550W (coat). The protective coating is not applied before the final resin coat has become tack free and the surface to receive the coating must be cleaned from any dust or debris by using a dry cloth or brush.

Lastly, the permanent supervision of the FRP works by persons certified by the FRP manufacturer is a mandatory requirement.



| FRP Installation Works |

Walid KHALIFE

*Principal Contracts Administrator
MAN Enterprise sal*

What does “environmentally friendly” and “green” mean?

The terms “environmentally friendly” and “green” are commonly used when referring to products and practices that have positive effects on the environment.

When discussing topics related to environmental friendliness, green experts are typically referring to energy savings, water and power efficiency (low consumption), non-toxic products, and recyclable materials.

What most people do not realize is that we can all be involved in protecting the environment by following some simple guidelines. The following suggestions can help protect the environment now and for generations to come. For example:

- > Carpooling (riding with more than one person in a car) to work or school every day minimizes the emission of CO² and fuel consumption
- > Turning off the lights in a room when it is unoccupied
- > Shutting off computers when finished working
- > Sorting the trash in separate bins (at home or in the office) labeled plastic, paper, glass and others for the purpose of recycling
- > Opening a window instead of turning on the AC
- > Wearing thicker clothing instead of turning on the heat
- > Avoiding printing unnecessary documents
- > Taking shorter showers
- > Closing the faucet while shaving or brushing teeth

Also, “Green building” is a hot topic in environmental friendliness. Given that buildings are responsible for 39% of CO₂ emissions, 40% of energy consumption and 13% of water consumption, applying green practices in construction will help decrease the negative effects and protect significantly the overall environment.

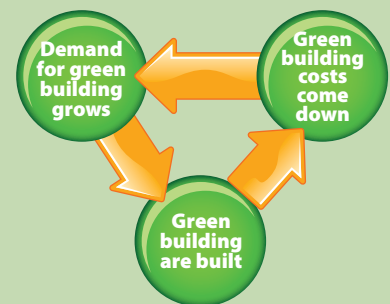
Guy ABI NADER, PhD, LEED AP

*Estimation & Procurement Coordinator
MAN Enterprise sal (Off-Shore) Abu Dhabi Br.*

> LEED Seminar

Lately, a LEED seminar was held in the MAN Training Center - Sin El Fil, Lebanon.

A variety of department representatives attended, including 21 employees from MEP, Operations, Estimations, and Procurement (in addition to project managers), from MAN Enterprise Corporate and MAN Enterprise Lebanon.



ACTIVITIES & EVENTS

| GENERAL MANAGEMENT REVIEW MEETING NO. 15 |

The Management Review Meeting No. 15 took place in Metropolitan Palace – Hilton Hotel on the 23rd of April 2012.



| Chairman Michel Abi Nader |

The meeting was headed by the Chairman, Mr. Michel Abi Nader, and approximately 40 executives, managers and heads of department from MAN Enterprise Lebanon and MAN Enterprise Corporate, representing all the MAN community, attended.

The management meeting has created an elevated degree of awareness vis-à-vis sustainability of superior performance across all areas, but has mainly aligned all participants to harness global resources towards creating value to our organizational endeavors.



| Attendees |

| MAN ENTERPRISE CORPORATE AND MAN ENTERPRISE QATAR WORKSHOP |

A two-day workshop was held in Beirut at the head office on February 20 and 21, 2012

The Chairman led the conference with the presence of MAN Enterprise Qatar Area Manager Mr. Sami Touma.

The conference brought together approximately 14 managers and executives from MAN Enterprise Corporate and the Qatar Branch, representing the top management as well as the Operations and Financial Departments.

The main objectives of the workshop:

- > Overview of main challenges in the pursuit of MAN Qatar growth objectives
- > Optimization of both relationships and processes for creation of synergistic benefits across MAN Group
- > Sharing best practices and establishing standardized paradigms

Agenda

- > Strategic Business Development for the next two years
- > Financial Policies, Procedures & Matrix of Responsibilities
- > Operation Policies, Procedures & Matrix of Responsibilities
- > Policies, Procedures & Matrix of Responsibilities
- > Estimation Policies, Procedures & Matrix of Responsibilities
- > Assets Management & Matrix of Responsibilities

Agenda for the next issue

Events: > Mr. and Mrs. Abi Nader invited all MAN Enterprise branches present in Lebanon to a summer gathering in Abdelli – Batroun during July 2012.

More details and photos of the events will be included in the next issue.

— ACTIVITIES & EVENTS

| FORWARD JOB FAIR 2012 • MAN ENTERPRISE & TECMAN INDUSTRY |

This year's job fair was held at BIEL- Beirut from Thursday, April 26 to Sunday, April 29, 2012



| Tecman Industry representatives:
Patricia Attamech and Roger Samaha |

MAN Enterprise and Tecman Industry, represented by their respective Human Resources Department personnel and engineers, fielded inquiries, highlighted career opportunities, and discussed the company's recruitment process. The job fair resulted in an impressive collection of potential candidates resume. Both companies are still receiving CVs and online applications well after the completion of the job fair.



| MAN Enterprise representatives:
Hanna Abi Saab, Carine Saade, Ray Kazan, and
Rony Costantine |

| AUB JOB FAIR 2012 |

This year's job fair was held at the AUB Campus – Beirut on Thursday, May 10 and Friday, May 11, 2012

MAN Enterprise Corporate, represented by its Human Resources Department and supported by skilled engineers from MAN Enterprise Lebanon, assisted candidates with inquiries and highlighted career opportunities while explaining the recruitment process of the company. The resume collection figures were in excess of 180 CVs. MAN is still receiving online applications on a daily basis as a result of the job fair.



| MAN Enterprise representatives: Salim Akl, Youmna Harb and Imad Fares |

— ACTIVITIES & EVENTS

| BUSINESS EXHIBITION • MAN ENTERPRISE LEBANON |

MAN Enterprise Lebanon participated in the Carrara Exhibition 2012 that was held in Italy from May 22 to 26, 2012 and was represented by the procurement officer Miss Carine Saadé.



| Carrara Exhibition 2012 |

| TECMAN INDUSTRY WORKSHOP |

TECMAN Industry and MAN Enterprise participated in a training session, Developing Personal Charisma and Influence, at the Sin El Fil Training Center on June 6, 8, and 13, 2012. The training was conducted by Dr. Naji Bejjani from ELCIM (a member of IRI).

The workshop demonstrates how to develop personal power and relational intelligence in order to generate greater influence over others. These Skills and techniques will enable participants to achieve desired outcomes, increase self-confidence and increase levels of personal effectiveness in influencing others.



| Attendees |



| Attendees |



| Mr. Naji Bejjani |



| Attendees |

— ACTIVITIES & EVENTS

| MAN ENTERPRISE HOLDING GATHERING EVENT • 2011 |

A reception ceremony was held on December 29, 2011 at Le Gabriel Hotel Achrafieh in the presence of the Chairman.

During the event, employees from all MAN Enterprise branches present in Lebanon, enjoyed the cocktail gathering. Afterward, photos were taken for each team with the Chairman and General Manager.



| Group photo |



| MAN Enterprise Corporate |

| MAN ENTERPRISE QATAR – METRIX YEAR END PARTY • 2011 |

A dinner was held on December 17, 2011 at the AL QASR BALLROOM, at the Wyndham Grand Regency in Doha.

In the opening ceremony, Mr. Sami Touma (Area General Manager – MAN Enterprise Qatar) welcomed the employees, consisting of 16 nationalities, with a motivational speech.

Following the remarks from the AGM, sites presentations and shows were performed. Special prizes, trophies and awards were given by the committee to the winners Infrastructure Priority Package (IPP) site came in first, then Viva Bahriya Plots 22 & 23 (VIBA) and North & South Infrastructure Priority Package (NSIP).

During the dinner, intermission performances were presented by the Malayali Group, Mrs. Annaliza Simbulas Ranases and Mr. Eric De Castro.

Finally, Mr. Michel Nader (Managing Director – Metrix Qatar) ended the ceremony with some inspirational words.



| AGM Mr. Sami Touma |



| Intermission from Malayali Group |



| IPP Presentation |



| Group photo |



| Group photo |

— TRAININGS

| FINANCE FOR NON FINANCIAL MANAGERS • MAN ENTERPRISE |

Finance for Non-Financial Managers held training for MAN's managers at the Sin el Fil Training Center on February 28, 2012 and March 05, and 12, 2012 for nine hours. The training was conducted by Mr. Antoine Nehme, company internal auditor.



| Mr. Antoine Nehme |

Agenda

1. Introduction to Accounting
 - Chart of Account
 - Accounting Principles (Fundamental)
 - Difference Between Financial Accounting and Managerial Accounting
2. Preparing , Understanding and Analysis of Financial Statements
3. Evaluating Financial Ratios in Construction Companies (NAICS & Beta Coefficient)
4. Revenues Recognition Principle (Percentage of Completion Method)
5. Tax & Legal (Useful Guide)



| Attendees' Photo |

| EMPLOYEES TRAINING |

MAN ENTERPRISE QATAR

We are aware that our success depends on the skills of our workforce and their ability to operate within the guidelines and regulations of the countries in which they operate. Therefore, we provide our employees with opportunities to regularly enhance their performance by following special training in their respective fields.

Congratulations to all those who completed courses or certifications during this year in management, safety or first aid.

MAN ENTERPRISE CORPORATE

Five managers from Operations, Planning, Business Development and Estimation attended a Construction Risk Management course on January 17, 19 and 24, 2012 for twelve hours.

MAN ENTERPRISE ABU DHABI

During April 2012, MAN Enterprise Abu Dhabi arranged training courses in ISO 14001 and OHSAS 18001 for health, safety and environmental standards requirements. MAN's AGM, PM, engineers, land surveyors, foreman, safety officers and administrators attended.

Agenda for the next issue

Training:

- > MAN Enterprise Lebanon: ISO and Safety trainings will take place between July and August.
- > MAN Enterprise Corporate: different Training sessions will also take place between August & September in different departments.

— SOCIAL

| WEDDINGS IN 2012 |

(MAN Qatar)

- Manesh Gurukkalavida on January 15, 2012
- Fansil Kunju on January 1st 2012
- Mel Edward Del Mundo on February 09, 2012
- Sujo Thomas in April 2012
- Mohamad Farhan Malik on February 17, 2012



(MAN Abu Dhabi)

- Julie Vega Decano on May 25, 2012

| NEWBORN BABIES IN 2012 |

- Shameer Shereef, **Athif** born February 22, 2012 (MAN Qatar)
- Sidhik Hamza, **Fathima** born January 13, 2012 (MAN Qatar)
- Karam Msayleb, **Karim** born March 15, 2012 (MAN Qatar)
- Ramzi Boustany, **Cristelle** born May 08, 2012 (MAN Qatar)
- Sami Antoun, **Afif** born May 09, 2012 (Metrix Qatar)
- Basil Villar, **Alyssa Nicole** born May 04, 2012 (Metrix Qatar)
- Junaid Azimi, **Shiffa Aayet** born May 20, 2012 (Metrix Qatar)
- Sarah Souheid Aoun, **Michel** born April 09, 2012 (MAN SAL)
- Joy Feghali, **Jolina** born May 04, 2012 (MAN SAL)
- Rony Costantine, **Marc** June 03, 2012 (Man LTD)
- Assad Ghawi, **Kyra** born February 24, 2012 (Tecman)
- Bachir Karaky, **Charbel** born May 09, 2012 (Tecman)



— SPORTING ACTIVITIES

| MAN ENTERPRISE QATAR & METRIX QATAR |

After organizing the Year End Party, the Events Committee, in collaboration with all sites, has developed sporting activities. It is a battle between sites to promote fellowship and camaraderie. Sites and the head office were requested to compose cricket, basketball and football teams to compete against each other in the spirit of MAN Enterprise.

The tournaments were launched in February 2012 and all games in all competitions were concluded in April 2012.

The head office claimed victory for the football cup while Viva Bahriya won the cricket and basketball championships.



| Viva Bahria Football Team |



| HO Basketball Team |



| NSIP TUSKERS Cricket Team |



| IPP Football Team |



| LUSAIL Challengers Cricket Team |

SPORTING ACTIVITIES



| NSIP JAGUAR Basketball Team |



| HO Football champion team 2012 |



| HO and Viva Bahria Cricket Team |

| TECMAN INDUSTRY MINI-FOOTBALL TEAM |



| Tecman mini football team |

A major part of the activities held by TECMAN Industry, deals with recreational sports. The TECMAN mini-football team is a weekly activity that contributes and promotes fitness, stress relief, team spirit build-up and camaraderie among the company's employees. A reflection of the company, the team encompasses strength, intelligence and the winning attitude.



| MAN ENTERPRISE LEBANON & CORPORATE SPORTING ACTIVITIES |

Free-play, training, tournaments, and other activities are on the way! 61 basketball players and 85 football players have started training/free-play on May 17, 2012.

We rely on staff participation for the success of these sporting activities.



| Basketball Team |



| Football Team |

Agenda for the next issue

Sporting Activities:

> Sports activities will continue during 2012, MAN Enterprise Lebanon and Corporate and TECMAN INDUSTRY football team will participate in the mini football tournament that will take place during summer 2012 between companies in Lebanon.

We will keep you updated of all new events and games in the next issues.

— COUNTRY OVERVIEW | LEBANON |

Lebanon, once known as the Paris of the Middle East, has reemerged as a hotspot for both tourism and entertainment.



> **Capital:** Beirut
> **Surface:** 10,452 sq. km.
> **Population:** Approx. 4 million

> **Languages:** Arabic
> **Religions:** 18
> **Currency:** Lebanese pound

| TOURISM

The tourism industry is a major source of revenue and one of the country's most successful and important sectors. Lebanon has much to offer in its diverse atmosphere and ancient history. In addition to magnificent Roman ruins, ancient archeological sites, historic castles, grand churches and mosques, there are also 200 km of exotic Mediterranean beaches, world renowned restaurants, and mountainous ski resorts.

| ECOTOURISM

Lebanon's unique geography, consisting of the Mediterranean sea, mountains, hills, rivers and waterfalls, is conducive to many activities including climbing, hiking, swimming, skiing, camping, caving and rafting.



| Byblos |

| Popular Destinations / Sites:

- > **Beirut**, the capital city, boasts dazzling nightlife, sumptuous five-star cuisine, tranquil beaches, modern souks, luxury shopping, and the new Zaitunay Bay marina area.
- > **Byblos**, located in the coastal north, is the oldest continuously inhabited city in the world.
- > **Baalbek**, in the Bekaa region, has one of the largest and best preserved Roman ruins of the ancient world.
- > **Tripoli and Sidon**, Lebanon's second and third largest cities respectively, offer many historical castles, sites and souks.
- > **Jeita Grotto**, home to the enormous limestone caves, was recently nominated for one of the New Seven Wonders of Nature competition.
- > **Beiteddine**, found in the Chouf region, is famous for its magnificent palace which once housed the local emir and was later used as a presidential summer residence.
- > **Tyre**, a city in the south, has a number of ancient sites including its Roman hippodrome, renowned as one of UNESCO's World Heritage Sites.
- > Museums, including the National Museum of Beirut, Sidon Soap Museum, Sursock Museum, and the Byblos Fossil and Wax Museums, not only educate but entertain.
- > Festivals, many of which take place in major archaeological and historical sites throughout the country including Aanjar, Baalbek, Beiteddine, Tyre, Byblos, and Deir el Qamar, attract international performers for world-class entertainment.



| Faraya Resort |



| Baalbek Festival |

CERTIFICATIONS

	TYPE	AREA	REMARKS
QMS	ISO 9001:2008 ISO 9001:2008 ISO 9001:2008 ISO 9001:2008 ISO 9001:2008	MAN Qatar METRIX Qatar MAN Abu Dhabi MAN Lebanon Tecman	NEW NEW
Safety	BS OHSAS 18001:2007	MAN Qatar	NEW
Green	U.S Green Building Council U.S Green Building Council	MAN Lebanon MAN Qatar	
Chiltern Dynamics	30 Prima Doorsets 60 Prima Doorsets 90 Prima Doorsets	Tecman Tecman Tecman	
Kahrama	Kahrama (Grade: 1st Unlimited)	MAN Qatar	



METRIX QATAR acquired certifications for staff as follows:

- Accredited electrical engineers by KAHRAMA, certified internal auditors for Quality Management System (ISO: 2008)
- Due to our colleague's team spirit and team hard work, the certification body of TUV SUD Management Service GmbH certifies that METRIX Qatar has established and applies a Quality Management System for providing Electrical and Mechanical Contracting and Maintenance Services.



Therefore METRIX QATAR is ISO: 2008 certified on March 13, 2012.

Ongoing Certifications:

- OSHAS 18001-2007
- Civil Defense accreditation



Chiltern Certified fire rated doors

TECMAN Industry manufactures wooden fire rated doors certified by CHILTERN Fire, UK.

Wooden fire rated doors are manufactured under BS 476- part 22:1987 and are rated for 30 minutes, 60 minutes and 90 minutes.



— ADDRESSES



Headquarters:

MAN ENTERPRISE LIMITED
OFF-SHORE CYPRUS
Ashrafieh, Charles Malek Ave.
Sole Center, 6th Floor
P.O.Box 16-5611 Beirut-Lebanon
Tel: +961 121 5111
Fax: +961 121 9500
info@manenterprise.com

Lebanon Branch:

MAN ENTERPRISE S.A.L
Ashrafieh, Sole Center, Charles Malek Ave.
P.O.Box 165611-1100 2060 Beirut-Lebanon
Tel: +961 121 5111
Fax: +961 133 6222
contacts@manenterprise.com

Qatar Branch:

MAN ENTERPRISE QATAR W.L.L
Al Emadi Building, D Ring Road
P.O.Box 22373 Doha – Qatar
Tel: +974 455 3366
Fax: +974 455 3377
manqat@manqat.com

Libya Branch:

MAN ENTERPRISE S.A.L
OFF-SHORE – LIBYA BR.
Behind Ziglam Mosque, Villa No. 16,
Nouflynn Road, Tripoli – Libya
Tel: +218 21 340 9561
Fax: +218 21 340 9560
contacts@manlibya.com

Iraq Branch:

MAN ENTERPRISE S.A.L OFF- SHORE
Iraq, Basra, Al Bradhaiyah - District (29)
Saeed Ameen St. - Villa 38/95
P.O. Box Iraq / Basra (2201).
P.O.Box: 2201 Bars - Iraq
contacts@manenterpriseiq.com

Abu Dhabi Branch:

MAN ENTERPRISE S.A.L
OFF-SHORE ABU DHABI BR.
Al Romaithi Building, 5th floor, Office 501-502,
Plot 47, East 25, Al Nahyan Camp, Abu Dhabi.
P.O.Box 29530 Abu Dhabi – UAE
Tel: +971 2643 1167 – Fax: +971 2643 1176
info@manenterpriseaz.ae
info@manenterpriseaz.ae



Lebanon Branch:

METRIX S.A.L
OFF-SHORE
Lebanon Beirut, Dora Highway,
Solemur Building, First Floor
Tel: +961 1 213 050
metrix@metrixmep.com

Qatar Branch:

METRIX QATAR W.L.L
D Ring Road,
Al Emadi Building, first Floor
P.O.Box: 31382 Doha – Qatar
Tel: +974 4455 3311
Fax: +974 4455 3322
metrix@metrixqat.com



TECMAN INDUSTRY S.A.L

Nahr El-Mot, Industry Valley
P.O.Box: 90 1980 Jdeideh, Metn - Lebanon
Tel: +961 1 879 111 – Fax: +961 1 879 222
tecman@tecmanindustry.com
www.tecmanindustry.com

Special thanks to all those
who contributed to the success of this issue

