

## LARGEST STEEL & STEEL PRODUCTS PRODUCER

IN THE UNITED STATES

### FORTUNE

THE WORLD'S MOST ADMIRED COMPANIES 2023

RANKED #1 IN OUR INDUSTRY TWO YEARS IN A ROW

### FORTUNE

BEST WORKPLACES IN MANUFACTURING AND PRODUCTION 2023

TWO YEARS IN A ROW



### LARGEST RECYCLER

OF ANY TYPE OF MATERIAL IN NORTH AMERICA

### 20+ MILLION

TONS OF FERROUS SCRAP NUCOR RECYCLES EACH YEAR TO PRODUCE NEW STEEL THAT IS 100% RECYCLABLE

### 31,000 TEAMMATES

WORKING SAFELY AT OVER 300 OPERATING FACILITIES IN NORTH AMERICA

### 250

NUCOR STEEL JOBS IN GEORGIA

### \$41.5 BILLION

NET SALES IN 2022

### #98

ON FORTUNE 500 LIST OF AMERICA'S LARGEST COMPANIES



#### NUCOR

NUCOR TUBULAR PRODUCTS - CONDUIT  
NUCOR WAREHOUSE SYSTEMS - GEORGIA

CEDAR SPRINGS  
MONROE

STEEL ELECTRIC CONDUIT  
STEEL RACKING



#### NUCOR SKYLINE STEEL

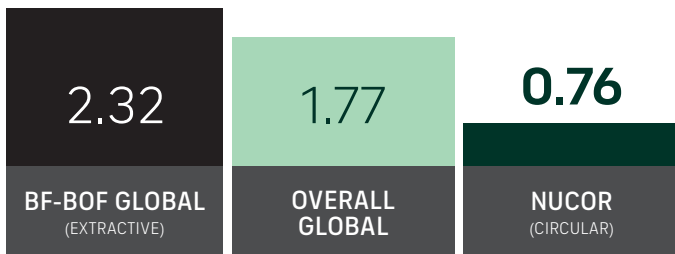
DULUTH

STEEL PIPE & LARGE DIAMETER TUBE

## GLOBAL LEADER IN STEELMAKING SUSTAINABILITY

### STEELMAKING GREENHOUSE GAS EMISSIONS

Average CO<sub>2</sub> emitted for every ton of steel produced  
Scopes 1, 2 & 3\*

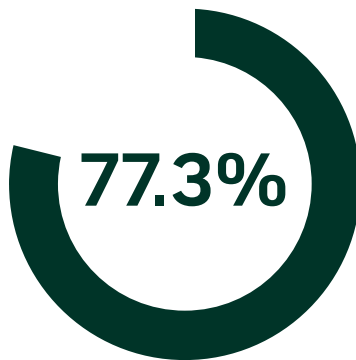


Nucor's GHG intensity is only 1/3 of the average extractive steel producer.

\*Nucor data is for 2022. Global and Integrated averages are from 2021, the most recent data available.

## RECYCLED CONTENT

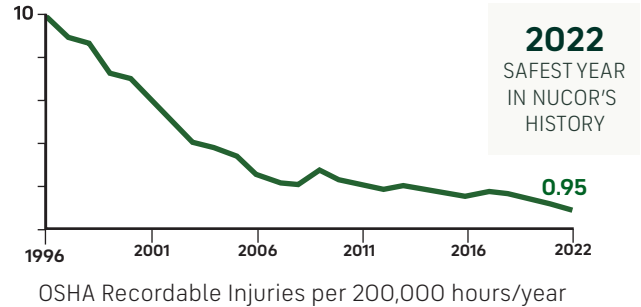
The recycled content of Nucor's steel nationwide



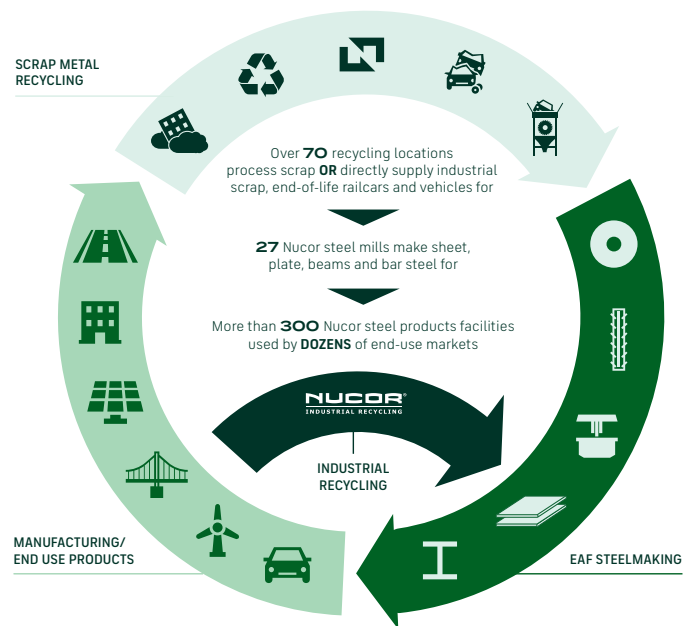
## WATER USAGE

Nucor uses **98% LESS** water than an average steel mill

## OUR FOCUS: BECOME THE WORLD'S SAFEST STEEL COMPANY



## VERTICAL INTEGRATION & PRODUCT LIFECYCLE



## COMMITMENT TO EDUCATION

Every Nucor teammate and their dependents are eligible to receive a **\$4,000-per-year** scholarship to college or vocational school. Nationwide, more than **\$115 million** has been awarded to almost **25,000** children since the program's inception in 1974.

\*Greenhouse Gas (GHG) emissions: Scope 1 = direct emissions from operations; Scope 2 = indirect emissions from purchased electricity