

**LARGEST STEEL & STEEL  
PRODUCTS PRODUCER**  
IN THE UNITED STATES

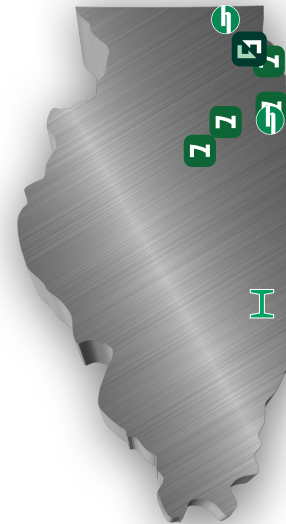
**LARGEST RECYCLER**  
OF ANY TYPE OF MATERIAL IN NORTH AMERICA

NUCOR RECYCLED **~23 MILLION TONS**  
OF FERROUS SCRAP IN 2021 TO PRODUCE  
NEW STEEL THAT IS 100% RECYCLABLE

**30,000 TEAMMATES**  
WORKING SAFELY AT OVER 300 OPERATING  
FACILITIES IN NORTH AMERICA

**FORTUNE**  
**BEST**  
WORKPLACES IN  
MANUFACTURING  
AND PRODUCTION™  
— 2022 —

**FORTUNE**  
RANKED #1 IN OUR INDUSTRY  
**THE WORLD'S  
MOST ADMIRED  
COMPANIES™**  
— 2022 —



**1,200**  
NUCOR STEEL JOBS IN ILLINOIS

**\$100,000+**  
MEDIAN PAY FOR ALL NUCOR TEAMMATES NATIONWIDE  
OVER THE LAST 3 YEARS (EXCLUDING EXECUTIVES)

**\$36.5 BILLION**  
NET SALES IN 2021



## NUCOR

NUCOR STEEL KANKAKEE, INC.  
NUCOR TUBULAR PRODUCTS – CHICAGO  
NUCOR TUBULAR PRODUCTS – MARSEILLES  
AMERICAN BUILDINGS COMPANY - ILLINOIS

BOURBONNAIS  
CHICAGO  
MARSEILLES  
EL PASO

BAR STEEL MILL  
STRUCTURAL STEEL TUBING  
STEEL BUILDINGS



## DAVID J. JOSEPH COMPANY

FERROUS TRADING OFFICE

CHICAGO

SCRAP METAL BROKERAGE



## HARRIS REBAR

HARRIS REBAR ROCKFORD INC.  
AMBASSADOR STEEL FAB. LLC

BELVIDERE  
BOURBONNAIS

REBAR FABRICATION & INSTALLATION  
REBAR FABRICATION & INSTALLATION



## SKYLINE STEEL

SKYLINE STEEL ROLLED & WELDED

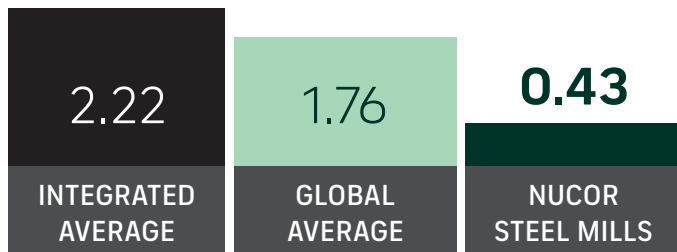
NEWTON

ROLLED & WELDED PIPE

## GLOBAL LEADER IN STEELMAKING SUSTAINABILITY

### STEELMAKING GREENHOUSE GAS EMISSIONS

Average CO<sub>2</sub> emitted for every ton of steel produced  
Scope 1 & Scope 2\*



Nucor's GHG Intensity is approx. **ONE-FOURTH** the global average, and **ONE-FIFTH** of the average integrated (BF/BOF) steel producer

\*Nucor data is for 2021. Global and Integrated averages are from 2020, the most recent data available.

## RECYCLED CONTENT

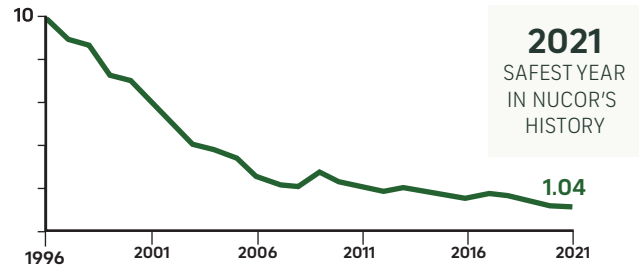
The recycled content of Nucor's steel nationwide



## WATER USAGE

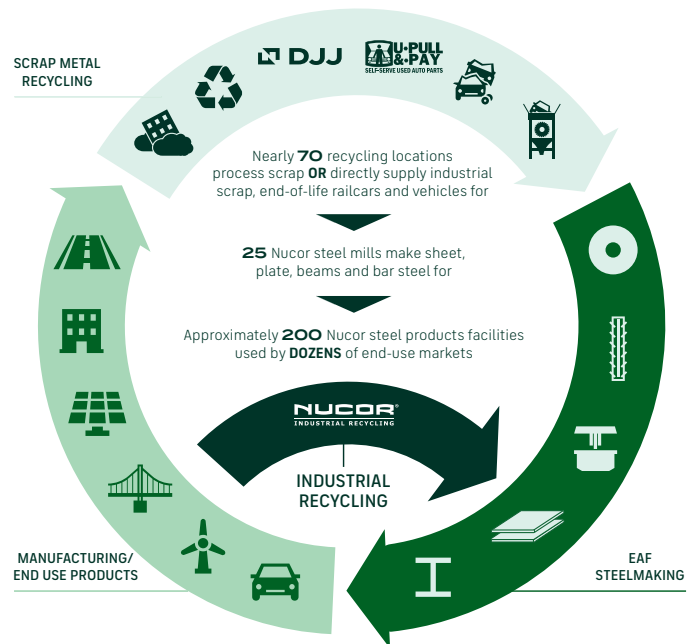
Nucor uses **98% LESS** water than an average steel mill

## OUR FOCUS: BECOME THE WORLD'S SAFEST STEEL COMPANY



OSHA Recordable Injuries per 200,000 hours/year

## VERTICAL INTEGRATION & PRODUCT LIFECYCLE



## COMMITMENT TO EDUCATION

Every Nucor teammate and their dependents are eligible to receive a **\$4,000-per-year** scholarship to college or vocational school. Nationwide, more than **\$115 million** has been awarded to almost **25,000** children since the program's inception in 1974.

\*Greenhouse Gas (GHG) emissions: Scope 1 = direct emissions from operations; Scope 2 = indirect emissions from purchased electricity