

## LARGEST STEEL & STEEL PRODUCTS PRODUCER

IN THE UNITED STATES

## LARGEST RECYCLER

OF ANY TYPE OF MATERIAL IN NORTH AMERICA

NUCOR RECYCLES MORE THAN **20 MILLION TONS** OF FERROUS SCRAP ANNUALLY TO PRODUCE NEW STEEL THAT IS 100% RECYCLABLE

## 31,000 TEAMMATES

WORKING SAFELY AT OVER 300 OPERATING FACILITIES IN NORTH AMERICA

## FORTUNE

THE WORLD'S MOST  
**ADMIRED**  
COMPANIES' **2023**

RANKED #1 IN OUR INDUSTRY  
TWO YEARS IN A ROW

## FORTUNE

BEST WORKPLACES  
IN MANUFACTURING  
AND PRODUCTION' **2023**

TWO YEARS IN A ROW



## 700

NUCOR STEEL JOBS IN MISSOURI

## \$100,000+

MEDIAN PAY FOR ALL NUCOR TEAMMATES NATIONWIDE OVER THE LAST 3 YEARS (EXCLUDING EXECUTIVES)

## \$41.5 BILLION

NET SALES IN 2022



### NUCOR

NUCOR STEEL SEDALIA  
NUCOR LMP STEEL, INC.  
NUCOR ST. LOUIS COLD DRAWN

SEDALIA  
MARYVILLE  
ST. LOUIS

REBAR MICROMILL  
COLD FINISHED STEEL BAR  
COLD FINISHED STEEL BAR



### NUCOR RAW MATERIALS GROUP

ADVANTAGE METALS RECYCLING

COLUMBIA  
KANSAS CITY  
SEDALIA  
ST. JOSEPH  
ST. LOUIS  
ST. LOUIS

SCRAP METAL RECYCLING

DJJ SCRAP MANAGEMENT

SCRAP MANAGEMENT OFFICE



### NUCOR HARRIS REBAR

AMBASSADOR STEEL FAB. INC.

KANSAS CITY  
ST. LOUIS

REBAR FABRICATION & INSTALLATION



### NUCOR SKYLINE STEEL

SKYLINE STEEL

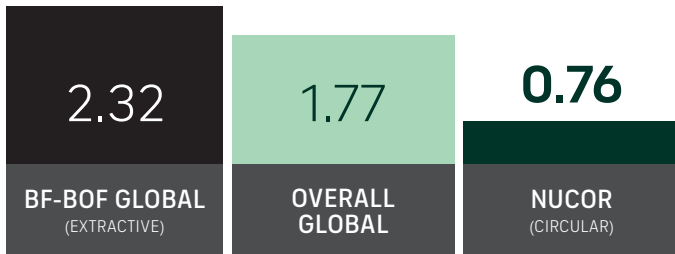
EARTH CITY

INTERNATIONAL SALES OFFICE

## GLOBAL LEADER IN STEELMAKING SUSTAINABILITY

### STEELMAKING GREENHOUSE GAS EMISSIONS

Average CO<sub>2</sub> emitted for every ton of steel produced  
Scopes 1, 2 & 3\*

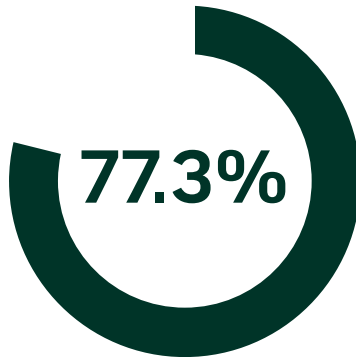


Nucor's GHG intensity is only 1/3 of the average extractive steel producer.

\*Nucor data is for 2022. Global and Integrated averages are from 2021, the most recent data available.

## RECYCLED CONTENT

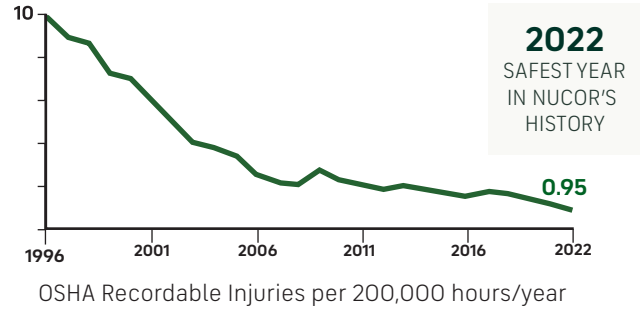
The recycled content of Nucor's steel nationwide



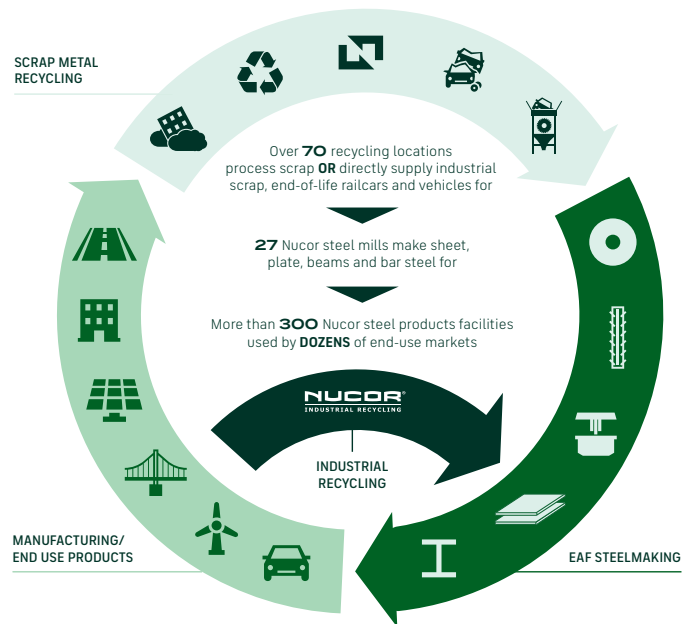
## WATER USAGE

Nucor uses **98% LESS** water than an average steel mill

## OUR FOCUS: BECOME THE WORLD'S SAFEST STEEL COMPANY



## VERTICAL INTEGRATION & PRODUCT LIFECYCLE



## COMMITMENT TO EDUCATION

Every Nucor teammate and their dependents are eligible to receive a **\$4,000-per-year** scholarship to college or vocational school. Nationwide, more than **\$115 million** has been awarded to almost **25,000** children since the program's inception in 1974.

\*Greenhouse Gas (GHG) emissions: Scope 1 = direct emissions from operations; Scope 2 = indirect emissions from purchased electricity