

LARGEST STEEL & STEEL PRODUCTS PRODUCER IN THE UNITED STATES

LARGEST RECYCLER OF ANY TYPE OF MATERIAL IN NORTH AMERICA

NUCOR RECYCLED ~23 MILLION TONS
OF FERROUS SCRAP IN 2021 TO PRODUCE
NEW STEEL THAT IS 100% RECYCLABLE

30,000 TEAMMATES
WORKING SAFELY AT OVER 300 OPERATING
FACILITIES IN NORTH AMERICA

**FORTUNE
BEST**
WORKPLACES IN
MANUFACTURING
AND PRODUCTION™
— 2022 —

FORTUNE
RANKED #1 IN OUR INDUSTRY
**THE WORLD'S
MOST ADMIRED
COMPANIES®**
— 2022 —



2,500
NUCOR STEEL JOBS IN ALABAMA

\$100,000+
MEDIAN PAY FOR ALL NUCOR TEAMMATES NATIONWIDE
OVER THE LAST 3 YEARS (EXCLUDING EXECUTIVES)

\$36.5 BILLION
NET SALES IN 2021



NUCOR

NUCOR STEEL BIRMINGHAM, INC.
NUCOR STEEL DECATUR, LLC
NUCOR STEEL TUSCALOOSA, INC.
NUCOR TUBULAR PRODCUTS – DECATUR
NUCOR TUBULAR PRODUCTS – TRINITY
NUCOR TUBULAR PRODUCTS – SOUTH
VULCRAFT – ALABAMA
AMERICAN BUILDINGS COMPANY

BIRMINGHAM
DECATUR
TUSCALOOSA
DECATUR
TRINITY
BIRMINGHAM
FORT PAYNE
EUFAULA

BAR STEEL MILL
SHEET STEEL MILL
PLATE STEEL MILL
HOLLOW STRUCTURAL
SECTION STEEL TUBING
STEEL JOISTS & DECKING
METAL BUILDINGS SERVICE CENTER



DAVID J. JOSEPH COMPANY

FERROUS TRADING OFFICE
RIVER METALS RECYCLING

BIRMINGHAM
TRINITY

SCRAP METAL BROKERAGE
SCRAP METAL RECYCLING



HARRIS REBAR

NUFAB REBAR LLC

BIRMINGHAM

REBAR FABRICATION & INSTALLATION



SKYLINE STEEL

SKYLINE STEEL

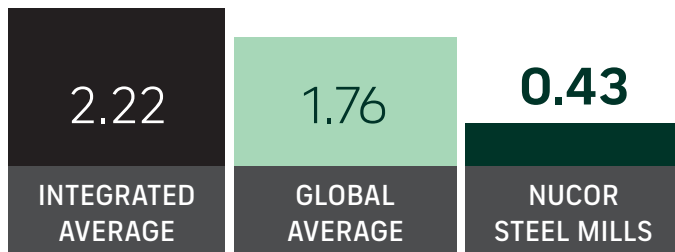
BIRMINGHAM

SHEET PILING SALES

GLOBAL LEADER IN STEELMAKING SUSTAINABILITY

STEELMAKING GREENHOUSE GAS EMISSIONS

Average CO₂ emitted for every ton of steel produced
Scope 1 & Scope 2*



Nucor's GHG Intensity is approx. **ONE-FOURTH** the global average, and **ONE-FIFTH** of the average integrated (BF/BOF) steel producer

*Nucor data is for 2021. Global and Integrated averages are from 2020, the most recent data available.

RECYCLED CONTENT

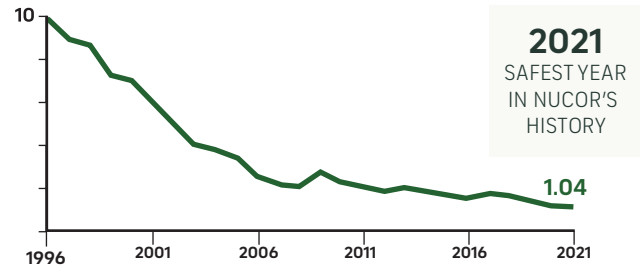
The recycled content of Nucor's steel nationwide



WATER USAGE

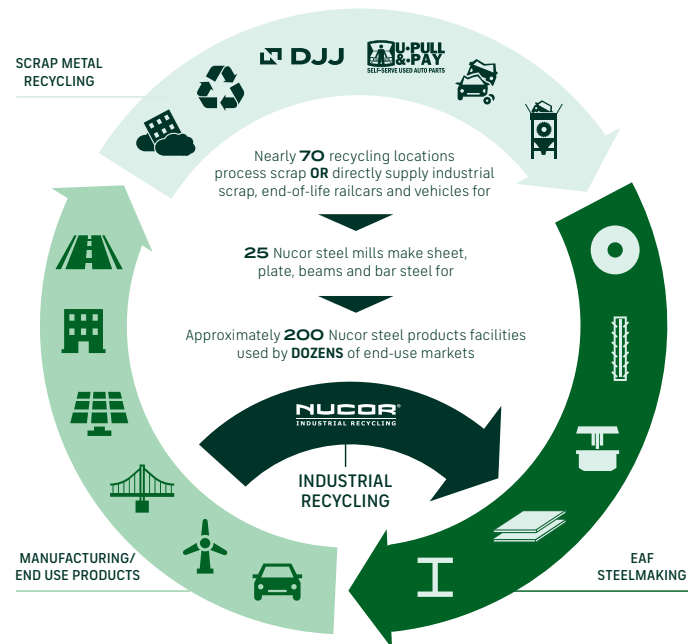
Nucor uses **98% LESS** water than an average steel mill

OUR FOCUS: BECOME THE WORLD'S SAFEST STEEL COMPANY



OSHA Recordable Injuries per 200,000 hours/year

VERTICAL INTEGRATION & PRODUCT LIFECYCLE



COMMITMENT TO EDUCATION

Every Nucor teammate and their dependents are eligible to receive a **\$4,000-per-year** scholarship to college or vocational school. Nationwide, more than **\$115 million** has been awarded to almost **25,000** children since the program's inception in 1974.

*Greenhouse Gas (GHG) emissions: Scope 1 = direct emissions from operations; Scope 2 = indirect emissions from purchased electricity