

LARGEST STEEL & STEEL PRODUCTS PRODUCER

IN THE UNITED STATES

LARGEST RECYCLER

OF ANY TYPE OF MATERIAL IN NORTH AMERICA

NUCOR RECYCLED **~23 MILLION TONS** OF FERROUS SCRAP IN 2021 TO PRODUCE NEW STEEL THAT IS 100% RECYCLABLE

30,000 TEAMMATES

WORKING SAFELY AT OVER 300 OPERATING FACILITIES IN NORTH AMERICA

**FORTUNE
BEST**
WORKPLACES IN
MANUFACTURING
AND PRODUCTION™
— 2022 —

FORTUNE
RANKED #1 IN OUR INDUSTRY
**THE WORLD'S
MOST ADMIRED
COMPANIES™**
— 2022 —



2,000

NUCOR STEEL JOBS IN TEXAS

\$100,000+

MEDIAN PAY FOR ALL NUCOR TEAMMATES NATIONWIDE OVER THE LAST 3 YEARS (EXCLUDING EXECUTIVES)

\$36.5 BILLION

NET SALES IN 2021



NUCOR

NUCOR STEEL - TEXAS
NUCOR STEEL LONGVIEW LLC
NUCOR BUILDINGS GROUP - TEXAS
VULCRAFT - TEXAS
METL-SPAN
HANNIBAL INDUSTRIES

JEWETT
LONGVIEW
TERRELL
GRAPELAND
LEWISVILLE
HOUSTON

BAR STEEL MILL
PLATE STEEL MILL
METAL BUILDING SYSTEMS
STEEL JOISTS & DECKING
INSULATED METAL PANELS
STEEL RACKING PRODUCTS



TEXAS PORT RECYCLING

Affiliate of the David J. Joseph Company (DJJ)

DJJ FERROUS TRADING OFFICE
U-PULL-&-PAY

CONROE
HOUSTON (PORT)
HOUSTON (PINEMONT)
VICTORIA
HOUSTON
HOUSTON

SCRAP METAL RECYCLING

SCRAP BROKERAGE
SELF-SERVE AUTO PARTS



HARRIS REBAR

NUFAB REBAR LLC

DALLAS
HOUSTON
JEWETT

REBAR FABRICATION & INSTALLATION



SKYLINE STEEL

SKYLINE STEEL

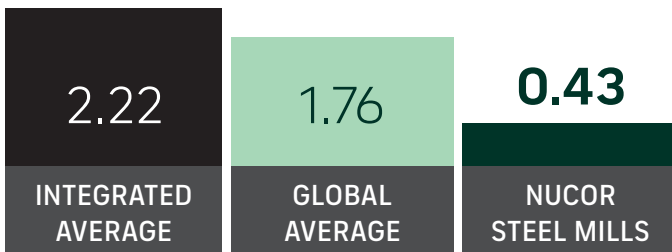
HOUSTON

STEEL PILING SALES OFFICE

GLOBAL LEADER IN STEELMAKING SUSTAINABILITY

STEELMAKING GREENHOUSE GAS EMISSIONS

Average CO₂ emitted for every ton of steel produced
Scope 1 & Scope 2*



Nucor's GHG Intensity is approx. **ONE-FOURTH** the global average, and **ONE-FIFTH** of the average integrated (BF/BOF) steel producer

*Nucor data is for 2021. Global and Integrated averages are from 2020, the most recent data available.

RECYCLED CONTENT

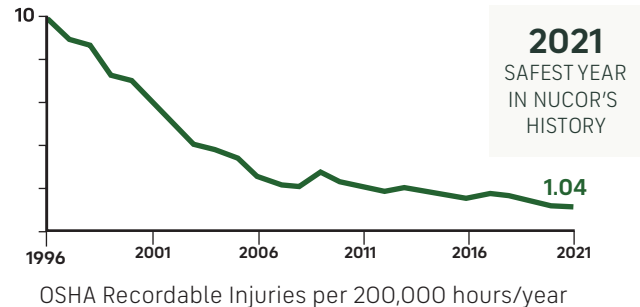
The recycled content of Nucor's steel nationwide



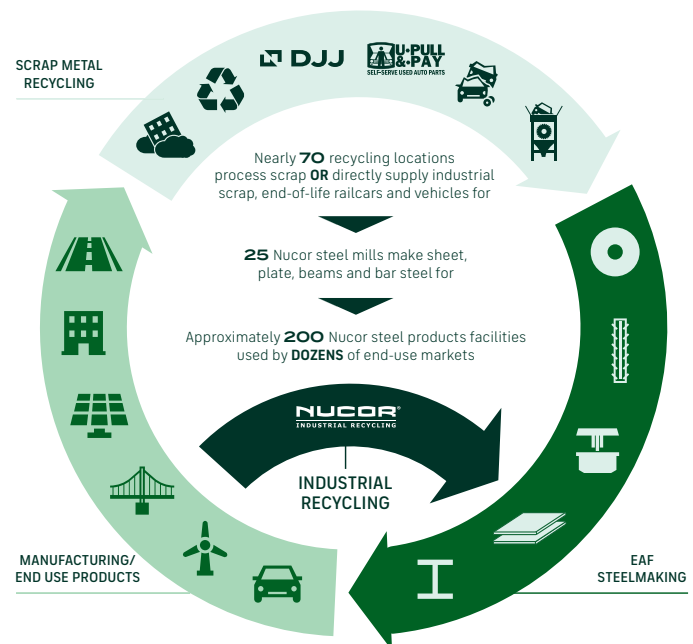
WATER USAGE

Nucor uses **98% LESS** water than an average steel mill

OUR FOCUS: BECOME THE WORLD'S SAFEST STEEL COMPANY



VERTICAL INTEGRATION & PRODUCT LIFECYCLE



COMMITMENT TO EDUCATION

Every Nucor teammate and their dependents are eligible to receive a **\$4,000-per-year** scholarship to college or vocational school. Nationwide, more than **\$115 million** has been awarded to almost **25,000** children since the program's inception in 1974.

*Greenhouse Gas (GHG) emissions: Scope 1 = direct emissions from operations; Scope 2 = indirect emissions from purchased electricity