

LARGEST STEEL & STEEL PRODUCTS PRODUCER
IN THE UNITED STATES

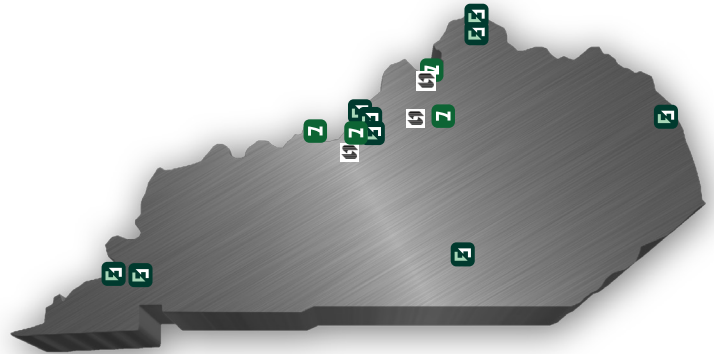
LARGEST RECYCLER
OF ANY TYPE OF MATERIAL IN NORTH AMERICA

NUCOR RECYCLES MORE THAN **20 MILLION TONS** OF FERROUS SCRAP ANNUALLY TO PRODUCE NEW STEEL THAT IS 100% RECYCLABLE

31,000 TEAMMATES
WORKING SAFELY AT OVER 300 OPERATING FACILITIES IN NORTH AMERICA

FORTUNE
THE WORLD'S MOST
ADMIRIED
COMPANIES' 2023
RANKED #1 IN OUR INDUSTRY
TWO YEARS IN A ROW

FORTUNE
BEST WORKPLACES
IN MANUFACTURING
AND PRODUCTION' 2023
TWO YEARS IN A ROW



2,000
NUCOR STEEL JOBS IN KENTUCKY

\$125,000+
MEDIAN PAY FOR ALL NUCOR TEAMMATES NATIONWIDE
OVER THE LAST 3 YEARS (EXCLUDING EXECUTIVES)

\$41.5 BILLION
NET SALES IN 2022



NUCOR

- NUCOR STEEL GALLATIN LLC
- NUCOR STEEL BRANDENBURG
- NUCOR TUBULAR PRODUCTS - CONDUIT
- NUCOR TUBULAR PRODUCTS - GALLATIN (2023)
- NUCOR INSULATED PANEL GROUP

- GHENT
- BRANDENBURG
- LOUISVILLE
- GHENT
- FRANKFORT

- SHEET STEEL MILL
- PLATE STEEL MILL
- STEEL ELECTRICAL CONDUIT
- HSS, MECHANICAL & GALVANIZED
- SOLAR TORQUE TUBING
- INSULATED METAL PANELS



NUCOR RAW MATERIALS GROUP

- RIVER METALS RECYCLING

- FORT MITCHELL
- LOUISVILLE (3 LOCATIONS)
- ASHLAND
- CALVERT CITY
- NEWPORT
- OWENSBORO
- PADUCAH
- SOMERSET

- HEADQUARTERS
- SCRAP METAL RECYCLING
- RAILCAR DISMANTLING
- METALS TRADING OFFICE

- DJJ RAIL EQUIPMENT GROUP
- DJJ METALS BROKERAGE



NUMIT LLC Joint Venture with Mitsui & Co. (U.S.A.) Inc.
STEEL TECHNOLOGIES

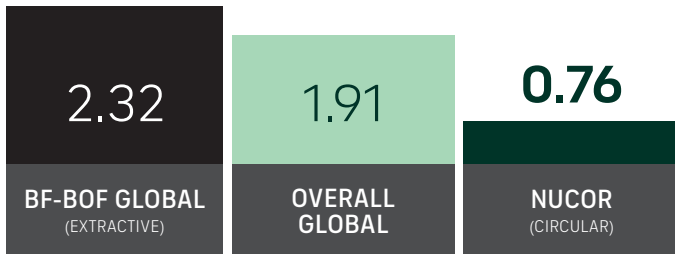
- LOUISVILLE
- EMINENCE
- GHENT

- HEADQUARTERS
- STEEL SHEET PROCESSING

GLOBAL LEADER IN STEELMAKING SUSTAINABILITY

STEELMAKING GREENHOUSE GAS EMISSIONS

Average CO₂ emitted for every ton of steel produced
Scopes 1, 2 & 3*



Nucor's GHG intensity is only 1/3 of the average extractive steel producer.

*Nucor data is for 2022. Global and Integrated averages are from 2021, the most recent data available.

RECYCLED CONTENT

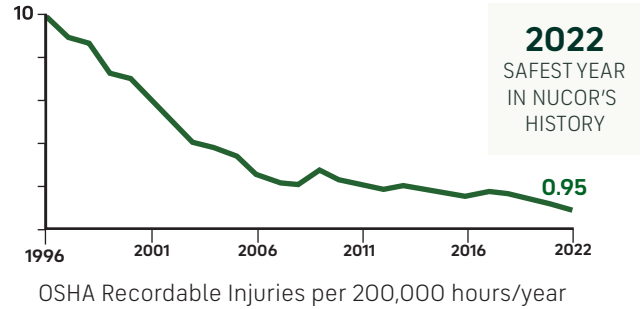
The recycled content of Nucor's steel nationwide



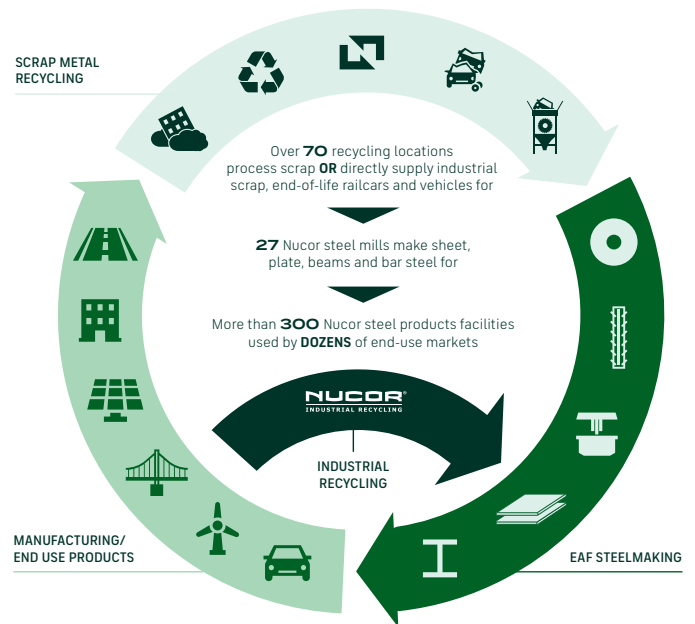
WATER USAGE

Nucor uses **98% LESS** water than an average steel mill

OUR FOCUS: BECOME THE WORLD'S SAFEST STEEL COMPANY



VERTICAL INTEGRATION & PRODUCT LIFECYCLE



COMMITMENT TO EDUCATION

Every Nucor teammate and their dependents are eligible to receive a **\$4,000-per-year** scholarship to college or vocational school. Nationwide, more than **\$115 million** has been awarded to almost **25,000** children since the program's inception in 1974.

*Greenhouse Gas (GHG) emissions: Scope 1 = direct emissions from operations; Scope 2 = indirect emissions from purchased electricity