

**LARGEST STEEL & STEEL
PRODUCTS PRODUCER**
IN THE UNITED STATES

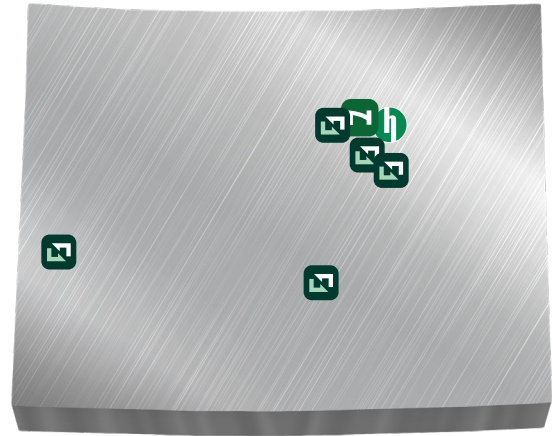
LARGEST RECYCLER
OF ANY TYPE OF MATERIAL IN NORTH AMERICA

NUCOR RECYCLED **~23 MILLION TONS**
OF FERROUS SCRAP IN 2021 TO PRODUCE
NEW STEEL THAT IS 100% RECYCLABLE

30,000 TEAMMATES
WORKING SAFELY AT OVER 300 OPERATING
FACILITIES IN NORTH AMERICA

FORTUNE
BEST
WORKPLACES IN
MANUFACTURING
AND PRODUCTION™
— 2022 —

FORTUNE
RANKED #1 IN OUR INDUSTRY
**THE WORLD'S
MOST ADMIRED
COMPANIES®**
— 2022 —



175
NUCOR STEEL JOBS IN COLORADO

\$100,000+
MEDIAN PAY FOR ALL NUCOR TEAMMATES NATIONWIDE
OVER THE LAST 3 YEARS (EXCLUDING EXECUTIVES)

\$36.5 BILLION
NET SALES IN 2021



NUCOR

NUCOR ENERGY HOLDINGS, INC.

DENVER

PICEANCE BASIN NATURAL
GAS LEASEHOLDS



DAVID J. JOSEPH COMPANY

WESTERN METALS RECYCLING

U-PULL-&-PAY

DENVER
GRAND JUNCTION
AURORA
COLORADO SPRINGS
DENVER

SCRAP METAL RECYCLING

SELF-SERVE AUTO PARTS



HARRIS REBAR

HARRIS REBAR DENVER

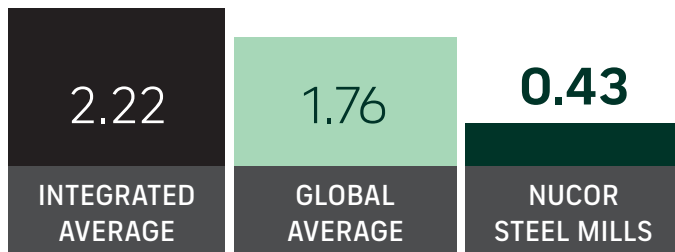
DENVER

REBAR FABRICATION & INSTALLATION

GLOBAL LEADER IN STEELMAKING SUSTAINABILITY

STEELMAKING GREENHOUSE GAS EMISSIONS

Average CO₂ emitted for every ton of steel produced
Scope 1 & Scope 2*



Nucor's GHG Intensity is approx. **ONE-FOURTH** the global average, and **ONE-FIFTH** of the average integrated (BF/BOF) steel producer

*Nucor data is for 2021. Global and Integrated averages are from 2020, the most recent data available.

RECYCLED CONTENT

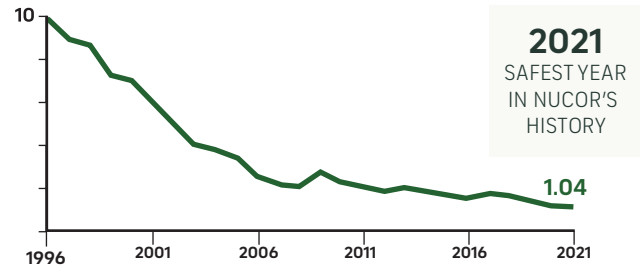
The recycled content of Nucor's steel nationwide



WATER USAGE

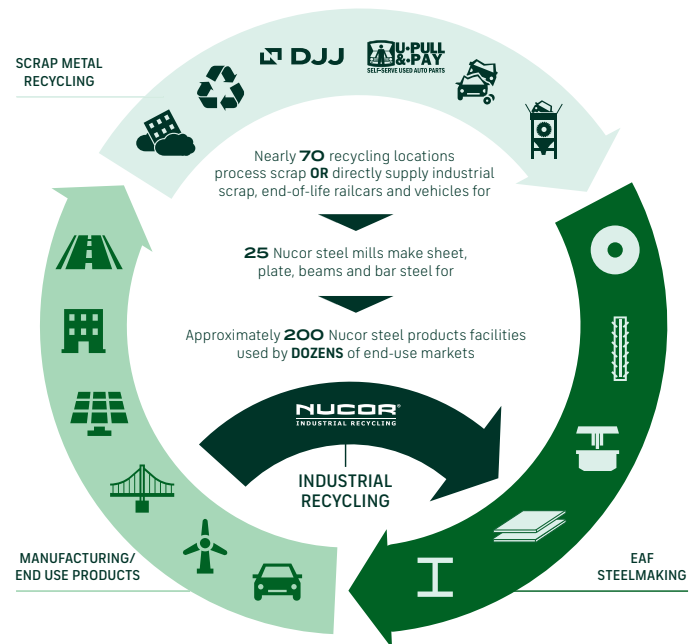
Nucor uses **98% LESS** water than an average steel mill

OUR FOCUS: BECOME THE WORLD'S SAFEST STEEL COMPANY



OSHA Recordable Injuries per 200,000 hours/year

VERTICAL INTEGRATION & PRODUCT LIFECYCLE



COMMITMENT TO EDUCATION

Every Nucor teammate and their dependents are eligible to receive a **\$4,000-per-year** scholarship to college or vocational school. Nationwide, more than **\$115 million** has been awarded to almost **25,000** children since the program's inception in 1974.

*Greenhouse Gas (GHG) emissions: Scope 1 = direct emissions from operations; Scope 2 = indirect emissions from purchased electricity