

LARGEST STEEL & STEEL PRODUCTS PRODUCER
IN THE UNITED STATES

LARGEST RECYCLER
OF ANY TYPE OF MATERIAL IN NORTH AMERICA

NUCOR RECYCLES MORE THAN **20 MILLION TONS** OF FERROUS SCRAP ANNUALLY TO PRODUCE NEW STEEL THAT IS 100% RECYCLABLE

31,000 TEAMMATES
WORKING SAFELY AT OVER 300 OPERATING FACILITIES IN NORTH AMERICA

FORTUNE
THE WORLD'S MOST
ADMIRED
COMPANIES' **2023**

RANKED #1 IN OUR INDUSTRY
TWO YEARS IN A ROW

FORTUNE
BEST WORKPLACES
IN MANUFACTURING
AND PRODUCTION' **2023**

TWO YEARS IN A ROW



1,600
NUCOR STEEL JOBS IN UTAH

\$125,000+
MEDIAN PAY FOR ALL NUCOR TEAMMATES NATIONWIDE
OVER THE LAST 3 YEARS (EXCLUDING EXECUTIVES)

\$41.5 BILLION
NET SALES IN 2022



NUCOR

NUCOR STEEL - UTAH
NUCOR COLD FINISH - UTAH
NUCOR WIRE PRODUCTS UTAH, INC.
VULCRAFT - UTAH
NUCOR BUILDINGS GROUP - UTAH
VULCRAFT GRATING

PLYMOUTH
BRIGHAM CITY
BRIGHAM CITY
BRIGHAM CITY
BRIGHAM CITY
BRIGHAM CITY

BAR STEEL MILL
COLD FINISH STEEL BAR
STEEL WIRE
STEEL JOISTS & DECKING
METAL BUILDING SYSTEMS
STEEL BAR GRATING



NUCOR RAW MATERIALS GROUP

WESTERN METALS RECYCLING

SANDY
PLYMOUTH
PROVO
SALT LAKE CITY
SALT LAKE CITY

WMR HEADQUARTERS
SCRAP METAL RECYCLING
SCRAP METALS BROKERAGE

FERROUS TRADING OFFICE



NUCOR HARRIS REBAR

NUCOR HARRIS REBAR SALT LAKE INC.

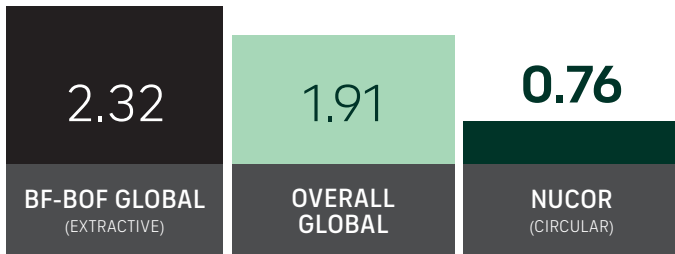
SALT LAKE CITY

REBAR FABRICATION & INSTALLATION

GLOBAL LEADER IN STEELMAKING SUSTAINABILITY

STEELMAKING GREENHOUSE GAS EMISSIONS

Average CO₂ emitted for every ton of steel produced
Scopes 1, 2 & 3*

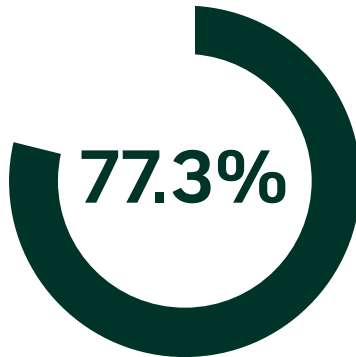


Nucor's GHG intensity is only 1/3 of the average extractive steel producer.

*Nucor data is for 2022. Global and Integrated averages are from 2021, the most recent data available.

RECYCLED CONTENT

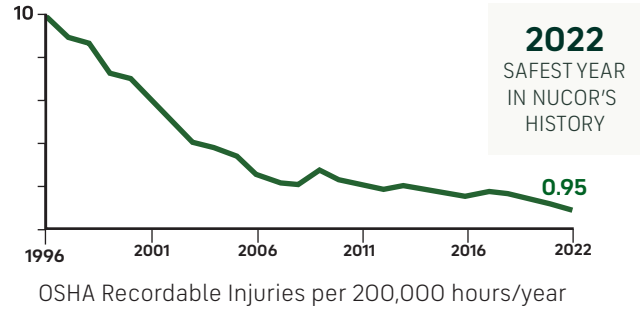
The recycled content of Nucor's steel nationwide



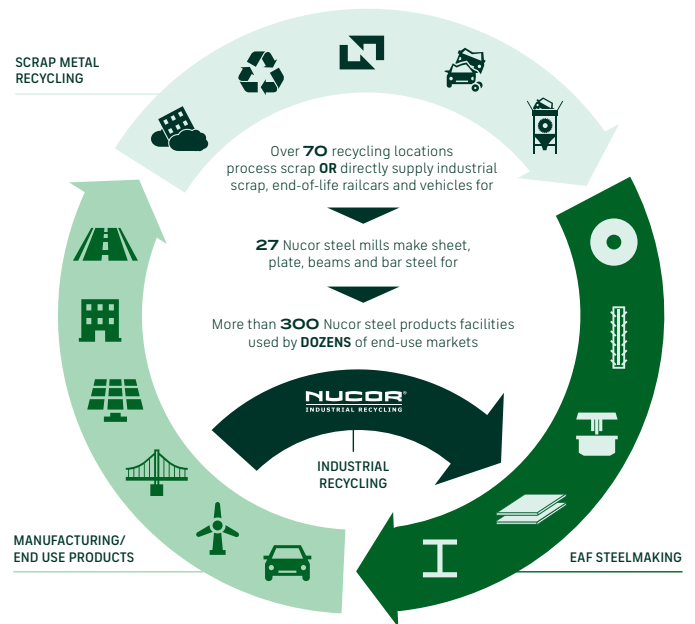
WATER USAGE

Nucor uses **98% LESS** water than an average steel mill

OUR FOCUS: BECOME THE WORLD'S SAFEST STEEL COMPANY



VERTICAL INTEGRATION & PRODUCT LIFECYCLE



COMMITMENT TO EDUCATION

Every Nucor teammate and their dependents are eligible to receive a **\$4,000-per-year** scholarship to college or vocational school. Nationwide, more than **\$115 million** has been awarded to almost **25,000** children since the program's inception in 1974.

*Greenhouse Gas (GHG) emissions: Scope 1 = direct emissions from operations; Scope 2 = indirect emissions from purchased electricity