

100

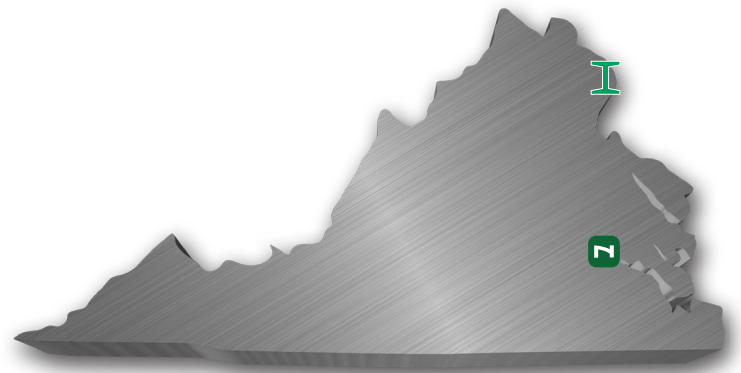
NUCOR STEEL JOBS IN VIRGINIA

\$100,000+

MEDIAN PAY FOR ALL NUCOR TEAMMATES NATIONWIDE
OVER THE LAST 3 YEARS (EXCLUDING EXECUTIVES)

\$41.5 BILLION

NET SALES IN 2022



LARGEST STEEL & STEEL PRODUCTS PRODUCER

IN THE UNITED STATES

LARGEST RECYCLER

OF ANY TYPE OF MATERIAL IN NORTH AMERICA

NUCOR RECYCLES MORE THAN **20 MILLION TONS**
OF FERROUS SCRAP ANNUALLY TO PRODUCE
NEW STEEL THAT IS 100% RECYCLABLE

31,000 TEAMMATES

WORKING SAFELY AT OVER 300 OPERATING
FACILITIES IN NORTH AMERICA

FORTUNE

THE WORLD'S MOST
ADMIRED
COMPANIES **2023**

RANKED #1 IN OUR INDUSTRY
TWO YEARS IN A ROW

FORTUNE

BEST WORKPLACES
IN MANUFACTURING
AND PRODUCTION **2023**

TWO YEARS IN A ROW



NUCOR

METL-SPAN

PRINCE GEORGE

INSULATED METAL PANELS



NUCOR SKYLINE STEEL

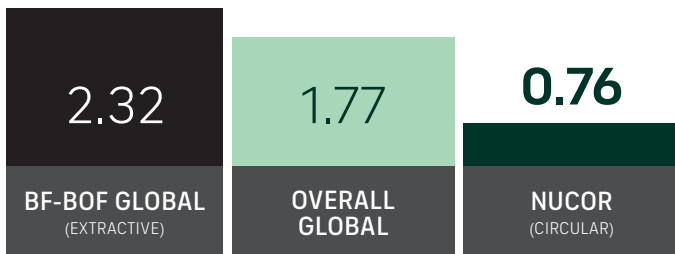
SPRINGFIELD

STEEL PILING SALES

GLOBAL LEADER IN STEELMAKING SUSTAINABILITY

STEELMAKING GREENHOUSE GAS EMISSIONS

Average CO₂ emitted for every ton of steel produced
Scopes 1, 2 & 3*

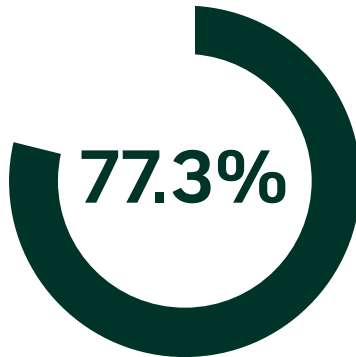


Nucor's GHG intensity is only 1/3 of the average extractive steel producer.

*Nucor data is for 2022. Global and Integrated averages are from 2021, the most recent data available.

RECYCLED CONTENT

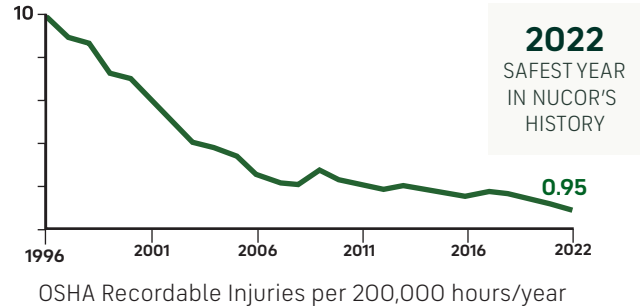
The recycled content of Nucor's steel nationwide



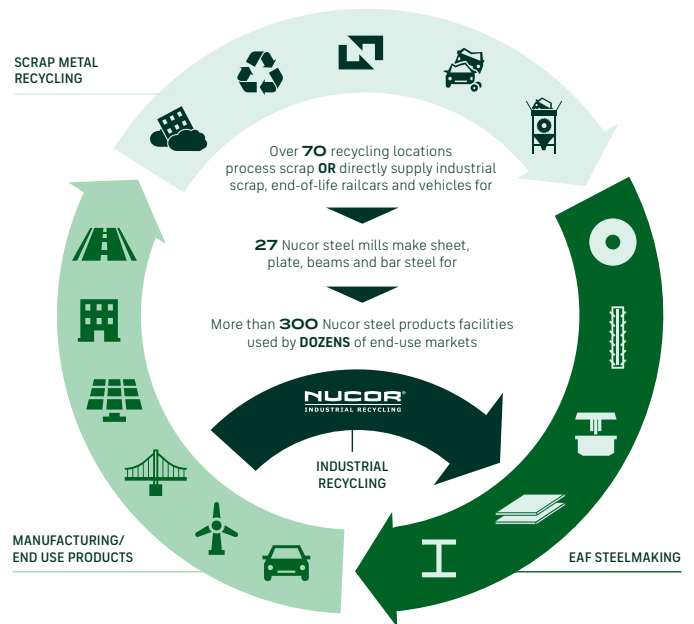
WATER USAGE

Nucor uses **98% LESS** water than an average steel mill

OUR FOCUS: BECOME THE WORLD'S SAFEST STEEL COMPANY



VERTICAL INTEGRATION & PRODUCT LIFECYCLE



COMMITMENT TO EDUCATION

Every Nucor teammate and their dependents are eligible to receive a **\$4,000-per-year** scholarship to college or vocational school. Nationwide, more than **\$115 million** has been awarded to almost **25,000** children since the program's inception in 1974.

*Greenhouse Gas (GHG) emissions: Scope 1 = direct emissions from operations; Scope 2 = indirect emissions from purchased electricity