

LARGEST STEEL & STEEL PRODUCTS PRODUCER

IN THE UNITED STATES

LARGEST RECYCLER

OF ANY TYPE OF MATERIAL IN NORTH AMERICA

NUCOR RECYCLES MORE THAN **20 MILLION TONS** OF FERROUS SCRAP ANNUALLY TO PRODUCE NEW STEEL THAT IS 100% RECYCLABLE

31,000 TEAMMATES

WORKING SAFELY AT OVER 300 OPERATING FACILITIES IN NORTH AMERICA

FORTUNE

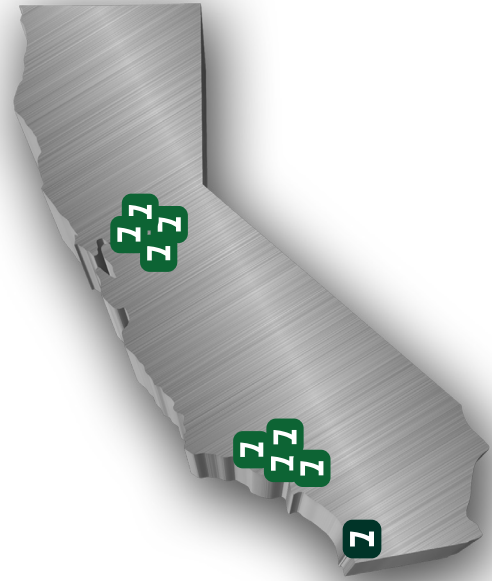
THE WORLD'S MOST
ADMIRED
COMPANIES' **2023**

RANKED #1 IN OUR INDUSTRY
TWO YEARS IN A ROW

FORTUNE

BEST WORKPLACES
IN MANUFACTURING
AND PRODUCTION' **2023**

TWO YEARS IN A ROW



1,500

NUCOR STEEL JOBS IN CALIFORNIA

\$125,000+

MEDIAN PAY FOR ALL NUCOR TEAMMATES NATIONWIDE OVER THE LAST 3 YEARS (EXCLUDING EXECUTIVES)

\$41.5 BILLION

NET SALES IN 2022



NUCOR

CALIFORNIA STEEL INDUSTRIES, INC.
CBC STEEL BUILDINGS
NUCOR BUILDINGS GROUP - MODESTO
NUCOR SKYLINE POMONA
NUCOR WAREHOUSE SYSTEMS - CONFAB
NUCOR WAREHOUSE SYSTEMS - LODI
VERCO DECKING, INC. (SOUTHERN CA)
VERCO DECKING, INC. (BAY AREA)

FONTANA
LATHROP
MODESTO
POMONA
VERNON
LODI
FONTANA
ANTIOCH

FLAT-ROLLED STEEL PRODUCTS
METAL BUILDINGS & COMPONENTS
METAL BUILDINGS SERVICE CENTER
STEEL PILING SALES
STEEL RACKING PRODUCTS
STEEL RACKING DISTRIBUTION
STEEL FLOOR & ROOF DECK
STEEL FLOOR & ROOF DECK



NUCOR HARRIS REBAR

HARRIS REBAR SOUTHERN CALIFORNIA

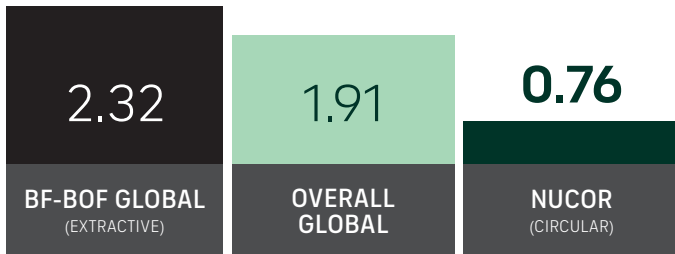
LAKESIDE

REBAR FABRICATION & INSTALLATION

GLOBAL LEADER IN STEELMAKING SUSTAINABILITY

STEELMAKING GREENHOUSE GAS EMISSIONS

Average CO₂ emitted for every ton of steel produced
Scopes 1, 2 & 3*

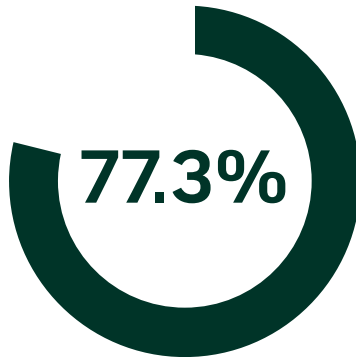


Nucor's GHG intensity is only 1/3 of the average extractive steel producer.

*Nucor data is for 2022. Global and Integrated averages are from 2021, the most recent data available.

RECYCLED CONTENT

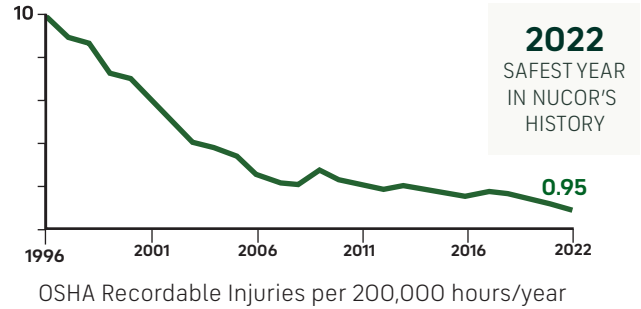
The recycled content of Nucor's steel nationwide



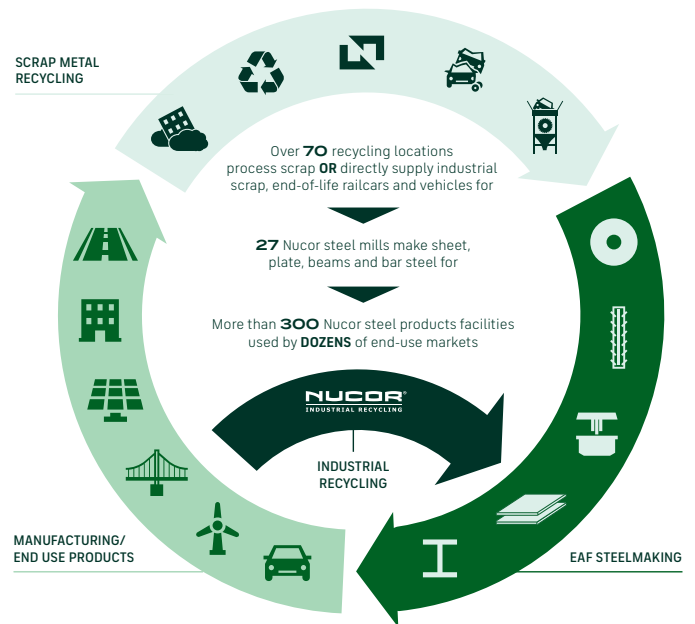
WATER USAGE

Nucor uses **98% LESS** water than an average steel mill

OUR FOCUS: BECOME THE WORLD'S SAFEST STEEL COMPANY



VERTICAL INTEGRATION & PRODUCT LIFECYCLE



COMMITMENT TO EDUCATION

Every Nucor teammate and their dependents are eligible to receive a **\$4,000-per-year** scholarship to college or vocational school. Nationwide, more than **\$115 million** has been awarded to almost **25,000** children since the program's inception in 1974.

*Greenhouse Gas (GHG) emissions: Scope 1 = direct emissions from operations; Scope 2 = indirect emissions from purchased electricity