

LARGEST STEEL & STEEL PRODUCTS PRODUCER

IN THE UNITED STATES

LARGEST RECYCLER

OF ANY TYPE OF MATERIAL IN NORTH AMERICA

NUCOR RECYCLED **~23 MILLION TONS** OF FERROUS SCRAP IN 2021 TO PRODUCE NEW STEEL THAT IS 100% RECYCLABLE

30,000 TEAMMATES

WORKING SAFELY AT OVER 300 OPERATING FACILITIES IN NORTH AMERICA

FORTUNE BEST

WORKPLACES IN
MANUFACTURING
AND PRODUCTION™
— 2022 —

FORTUNE

RANKED #1 IN OUR INDUSTRY
THE WORLD'S
MOST ADMIRABLE
COMPANIES®
— 2022 —



1,100

NUCOR STEEL JOBS IN NEBRASKA

\$100,000+

MEDIAN PAY FOR ALL NUCOR TEAMMATES NATIONWIDE
OVER THE LAST 3 YEARS (EXCLUDES EXECUTIVES)

\$36.5 BILLION

NET SALES IN 2021



NUCOR

NUCOR STEEL NEBRASKA
NUCOR COLD FINISH
NUCOR DETAILING CENTER
VULCRAFT - NEBRASKA

NORFOLK
NORFOLK
NORFOLK
NORFOLK

STEEL BAR
COLD FINISH STEEL BAR
DRAFTING SERVICES
STEEL FLOOR & ROOF DECK
& STEEL JOISTS



DAVID J. JOSEPH COMPANY

FERROUS TRADING

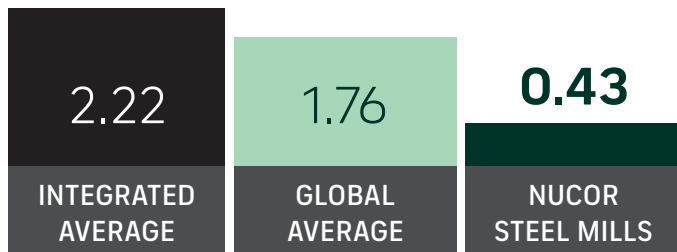
OMAHA

SCRAP BROKERAGE

GLOBAL LEADER IN STEELMAKING SUSTAINABILITY

STEELMAKING GREENHOUSE GAS EMISSIONS

Average CO₂ emitted for every ton of steel produced
Scope 1 & Scope 2*



Nucor's GHG Intensity is approx. **ONE-FOURTH** the global average, and **ONE-FIFTH** of the average integrated (BF/BOF) steel producer

*Nucor data is for 2021. Global and Integrated averages are from 2020, the most recent data available.

RECYCLED CONTENT

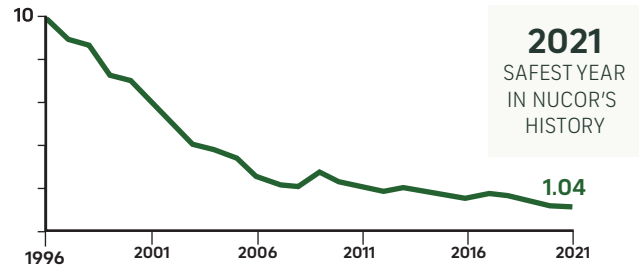
The recycled content of Nucor's steel nationwide



WATER USAGE

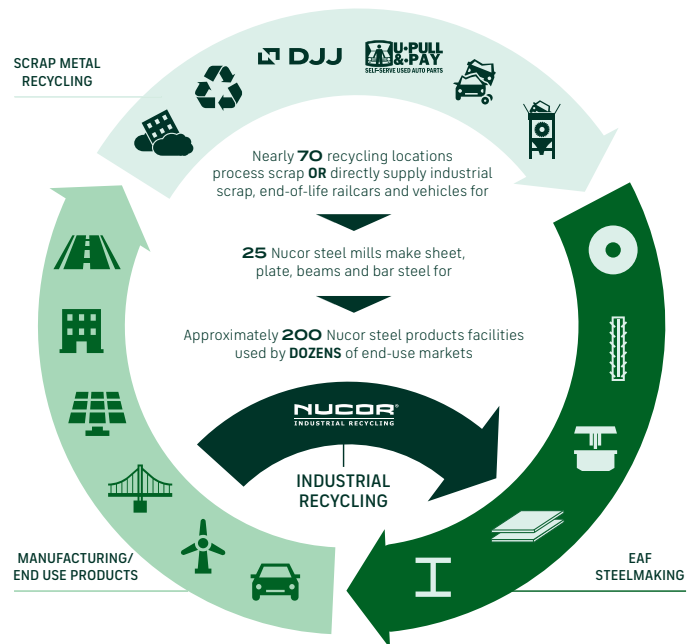
Nucor uses **98% LESS** water than an average steel mill

OUR FOCUS: BECOME THE WORLD'S SAFEST STEEL COMPANY



OSHA Recordable Injuries per 200,000 hours/year

VERTICAL INTEGRATION & PRODUCT LIFECYCLE



COMMITMENT TO EDUCATION

Every Nucor teammate and their dependents are eligible to receive a **\$4,000-per-year** scholarship to college or vocational school. Nationwide, more than **\$115 million** has been awarded to almost **25,000** children since the program's inception in 1974.

*Greenhouse Gas (GHG) emissions: Scope 1 = direct emissions from operations; Scope 2 = indirect emissions from purchased electricity