

LARGEST STEEL & STEEL PRODUCTS PRODUCER

IN THE UNITED STATES

LARGEST RECYCLER

OF ANY TYPE OF MATERIAL IN NORTH AMERICA

NUCOR RECYCLES MORE THAN **20 MILLION TONS** OF FERROUS SCRAP ANNUALLY TO PRODUCE NEW STEEL THAT IS 100% RECYCLABLE

31,000 TEAMMATES

WORKING SAFELY AT OVER 300 OPERATING FACILITIES IN NORTH AMERICA

FORTUNE

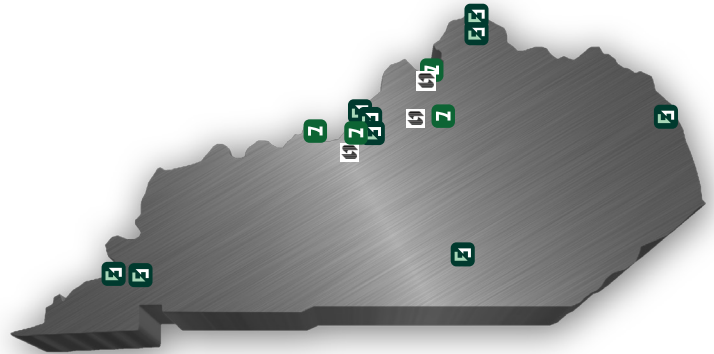
THE WORLD'S MOST ADMIRABLE COMPANIES 2023

RANKED #1 IN OUR INDUSTRY TWO YEARS IN A ROW

FORTUNE

BEST WORKPLACES IN MANUFACTURING AND PRODUCTION 2023

TWO YEARS IN A ROW



2,000

NUCOR STEEL JOBS IN KENTUCKY

\$100,000+

MEDIAN PAY FOR ALL NUCOR TEAMMATES NATIONWIDE OVER THE LAST 3 YEARS (EXCLUDING EXECUTIVES)

\$41.5 BILLION

NET SALES IN 2022



NUCOR

NUCOR STEEL GALLATIN LLC
 NUCOR STEEL BRANDENBURG
 NUCOR TUBULAR PRODUCTS - CONDUIT
 NUCOR TUBULAR PRODUCTS - GALLATIN (2023)

NUCOR INSULATED PANEL GROUP

GHENT
 BRANDENBURG
 LOUISVILLE
 GHENT

FRANKFORT

SHEET STEEL MILL
 PLATE STEEL MILL
 STEEL ELECTRICAL CONDUIT
 HSS, MECHANICAL & GALVANIZED
 SOLAR TORQUE TUBING
 INSULATED METAL PANELS



NUCOR RAW MATERIALS GROUP

RIVER METALS RECYCLING

FORT MITCHELL
 LOUISVILLE (3 LOCATIONS)
 ASHLAND
 CALVERT CITY
 NEWPORT
 OWENSBORO
 PADUCAH
 SOMERSET

HEADQUARTERS
 SCRAP METAL RECYCLING
 RAILCAR DISMANTLING
 METALS TRADING OFFICE

DJJ RAIL EQUIPMENT GROUP
 DJJ METALS BROKERAGE



NUMIT LLC Joint Venture with Mitsui & Co. (U.S.A.) Inc.

STEEL TECHNOLOGIES

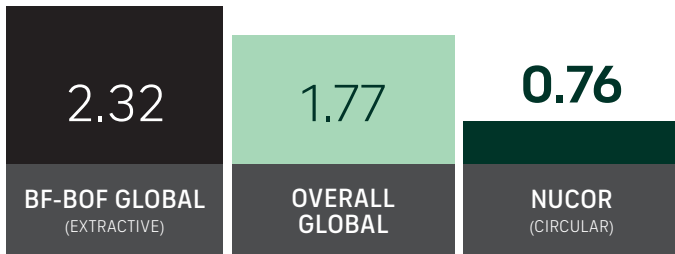
LOUISVILLE
 EMINENCE
 GHENT

HEADQUARTERS
 STEEL SHEET PROCESSING

GLOBAL LEADER IN STEELMAKING SUSTAINABILITY

STEELMAKING GREENHOUSE GAS EMISSIONS

Average CO₂ emitted for every ton of steel produced
Scopes 1, 2 & 3*

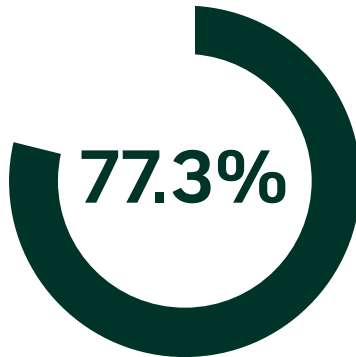


Nucor's GHG intensity is only 1/3 of the average extractive steel producer.

*Nucor data is for 2022. Global and Integrated averages are from 2021, the most recent data available.

RECYCLED CONTENT

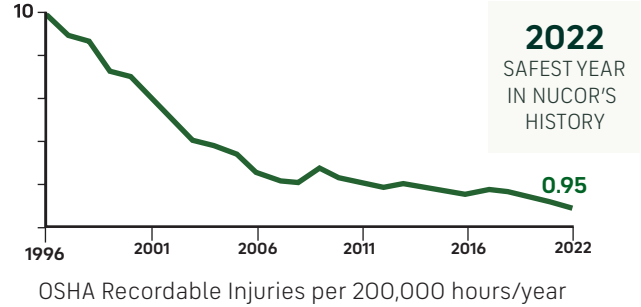
The recycled content of Nucor's steel nationwide



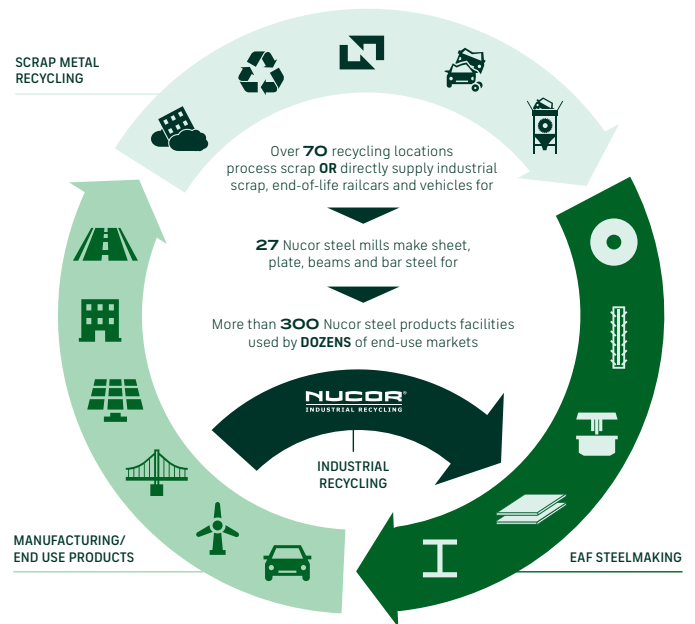
WATER USAGE

Nucor uses **98% LESS** water than an average steel mill

OUR FOCUS: BECOME THE WORLD'S SAFEST STEEL COMPANY



VERTICAL INTEGRATION & PRODUCT LIFECYCLE



COMMITMENT TO EDUCATION

Every Nucor teammate and their dependents are eligible to receive a **\$4,000-per-year** scholarship to college or vocational school. Nationwide, more than **\$115 million** has been awarded to almost **25,000** children since the program's inception in 1974.

*Greenhouse Gas (GHG) emissions: Scope 1 = direct emissions from operations; Scope 2 = indirect emissions from purchased electricity