

LARGEST STEEL & STEEL PRODUCTS PRODUCER

IN THE UNITED STATES

LARGEST RECYCLER

OF ANY TYPE OF MATERIAL IN NORTH AMERICA

NUCOR RECYCLED **~23 MILLION TONS** OF FERROUS SCRAP IN 2021 TO PRODUCE NEW STEEL THAT IS 100% RECYCLABLE

30,000 TEAMMATES

WORKING SAFELY AT OVER 300 OPERATING FACILITIES IN NORTH AMERICA

**FORTUNE
BEST**

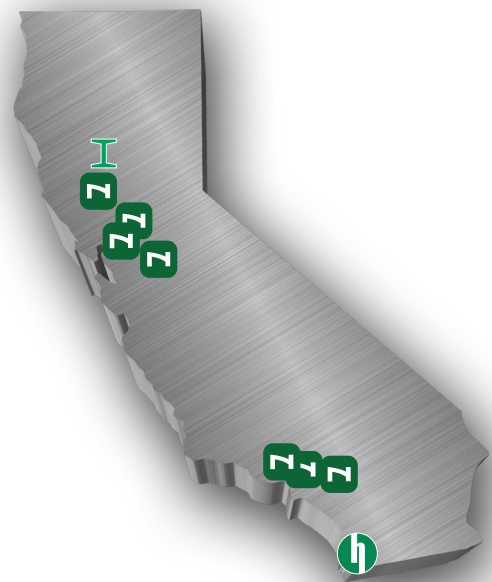
WORKPLACES IN
MANUFACTURING
AND PRODUCTION™
— 2022 —

FORTUNE

RANKED #1 IN OUR INDUSTRY

THE WORLD'S
MOST ADMIRED
COMPANIES®

— 2022 —



1,500

NUCOR STEEL JOBS IN CALIFORNIA

\$100,000+

MEDIAN PAY FOR ALL NUCOR TEAMMATES NATIONWIDE
OVER THE LAST 3 YEARS (EXCLUDING EXECUTIVES)

\$36.5 BILLION

NET SALES IN 2021



NUCOR

AMERICAN BUILDINGS
CALIFORNIA STEEL INDUSTRIES
CBC STEEL BUILDINGS
HANNIBAL INDUSTRIES, INC.

VERCO DECKING, INC. (SOUTHERN CA)
VERCO DECKING, INC. (BAY AREA)

MODESTO
FONTANA
LATHROP
LOS ANGELES
STOCKTON
FONTANA
ANTIOCH

METAL BUILDINGS SERVICE CENTER
FLAT-ROLLED STEEL PRODUCTS
METAL BUILDINGS & COMPONENTS
STEEL RACKING & DISTRIBUTION
RACKING DISTRIBUTION
STEEL FLOOR & ROOF DECK
STEEL FLOOR & ROOF DECK



HARRIS REBAR

HARRIS REBAR SOUTHERN CALIFORNIA

SAN DIEGO

REBAR FABRICATION & INSTALLATION



SKYLINE STEEL

SKYLINE STEEL

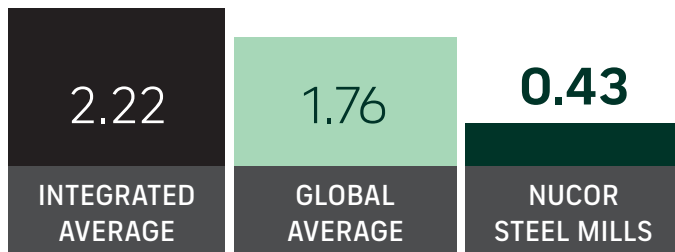
SACRAMENTO

STEEL PILING SALES

GLOBAL LEADER IN STEELMAKING SUSTAINABILITY

STEELMAKING GREENHOUSE GAS EMISSIONS

Average CO₂ emitted for every ton of steel produced
Scope 1 & Scope 2*



Nucor's GHG Intensity is approx. **ONE-FOURTH** the global average, and **ONE-FIFTH** of the average integrated (BF/BOF) steel producer

*Nucor data is for 2021. Global and Integrated averages are from 2020, the most recent data available.

RECYCLED CONTENT

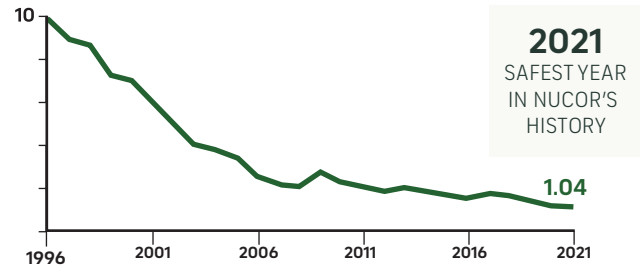
The recycled content of Nucor's steel nationwide



WATER USAGE

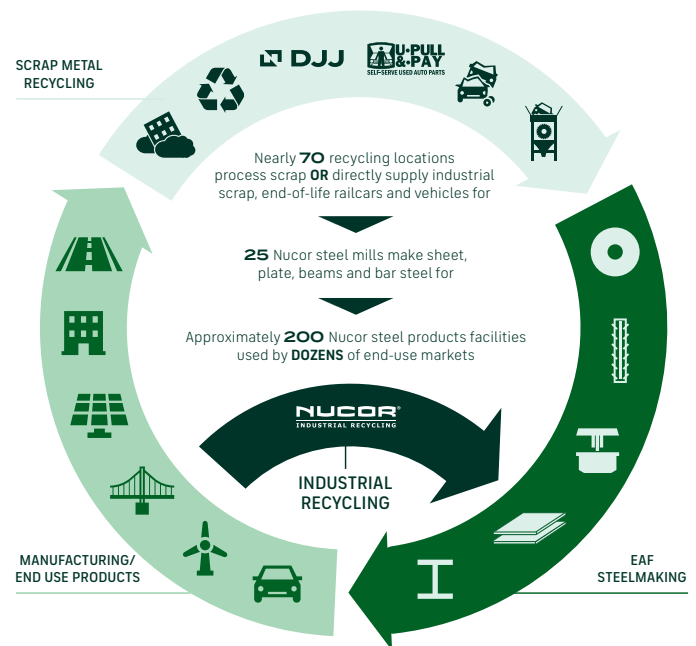
Nucor uses **98% LESS** water than an average steel mill

OUR FOCUS: BECOME THE WORLD'S SAFEST STEEL COMPANY



OSHA Recordable Injuries per 200,000 hours/year

VERTICAL INTEGRATION & PRODUCT LIFECYCLE



COMMITMENT TO EDUCATION

Every Nucor teammate and their dependents are eligible to receive a **\$4,000-per-year** scholarship to college or vocational school. Nationwide, more than **\$115 million** has been awarded to almost **25,000** children since the program's inception in 1974.

*Greenhouse Gas (GHG) emissions: Scope 1 = direct emissions from operations; Scope 2 = indirect emissions from purchased electricity