

LARGEST STEEL & STEEL PRODUCTS PRODUCER

IN THE UNITED STATES

LARGEST RECYCLER

OF ANY TYPE OF MATERIAL IN NORTH AMERICA

NUCOR RECYCLES MORE THAN **20 MILLION TONS** OF FERROUS SCRAP ANNUALLY TO PRODUCE NEW STEEL THAT IS 100% RECYCLABLE

31,000 TEAMMATES

WORKING SAFELY AT OVER 300 OPERATING FACILITIES IN NORTH AMERICA

FORTUNE

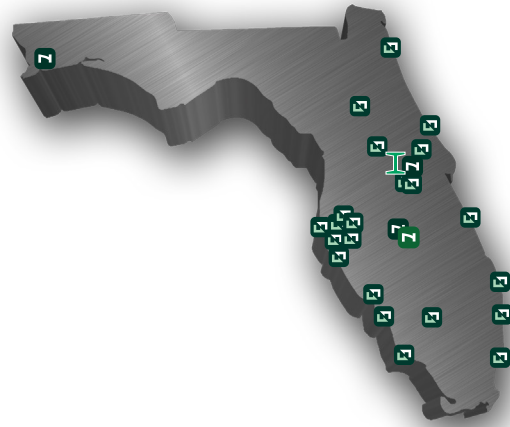
THE WORLD'S MOST ADMIRED COMPANIES' 2023

RANKED #1 IN OUR INDUSTRY TWO YEARS IN A ROW

FORTUNE

BEST WORKPLACES IN MANUFACTURING AND PRODUCTION' 2023

TWO YEARS IN A ROW



900

NUCOR STEEL JOBS IN FLORIDA

\$125,000+

MEDIAN PAY FOR ALL NUCOR TEAMMATES NATIONWIDE OVER THE LAST 3 YEARS (EXCLUDING EXECUTIVES)

\$41.5 BILLION

NET SALES IN 2022



NUCOR

NUCOR STEEL FLORIDA, INC.

FROSTPROOF

REBAR MICROMILL



NUCOR RAW MATERIALS GROUP

TRADEMARK METALS RECYCLING

CLEARWATER
 COCOA BEACH (ROCKLEDGE)
 DAYTONA (HOLLY HILL)
 FT. MYERS
 GAINESVILLE
 JACKSONVILLE (MAIN METALS)
 LABELLE
 MIAMI
 NAPLES
 OCALA (6TH ST)
 ORLANDO (KALEY)
 ORLANDO (LANDSTREET)

POMPANO
 PUNTA GORDA
 RIVIERA BEACH
 SANFORD
 SARASOTA
 SEFFNER
 ST. PETERSBURG
 SUTTON
 TAMPA
 TAMPA PORT
 YBOR

SCRAP METAL RECYCLING



NUCOR HARRIS REBAR

MILTON
 FROSTPROOF
 ZELLWOOD

REBAR FABRICATION & INSTALLATION



NUCOR SKYLINE STEEL

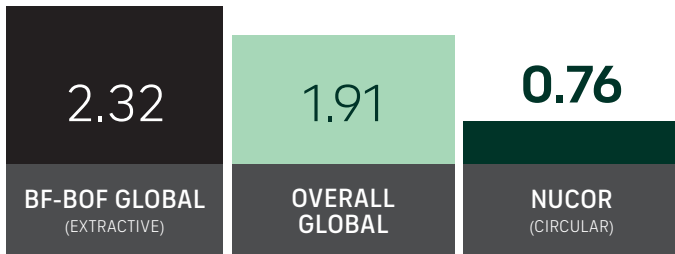
ORLANDO

SALES OFFICE

GLOBAL LEADER IN STEELMAKING SUSTAINABILITY

STEELMAKING GREENHOUSE GAS EMISSIONS

Average CO₂ emitted for every ton of steel produced
Scopes 1, 2 & 3*

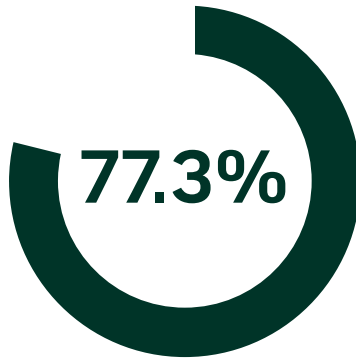


Nucor's GHG intensity is only 1/3 of the average extractive steel producer.

*Nucor data is for 2022. Global and Integrated averages are from 2021, the most recent data available.

RECYCLED CONTENT

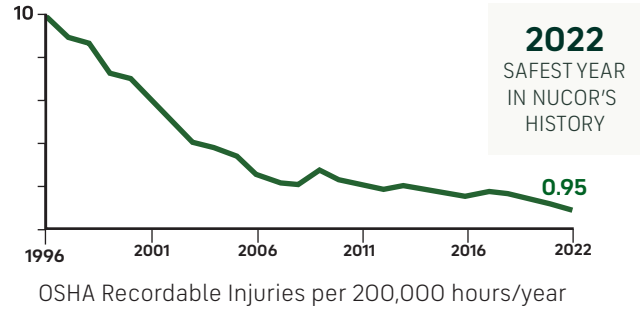
The recycled content of Nucor's steel nationwide



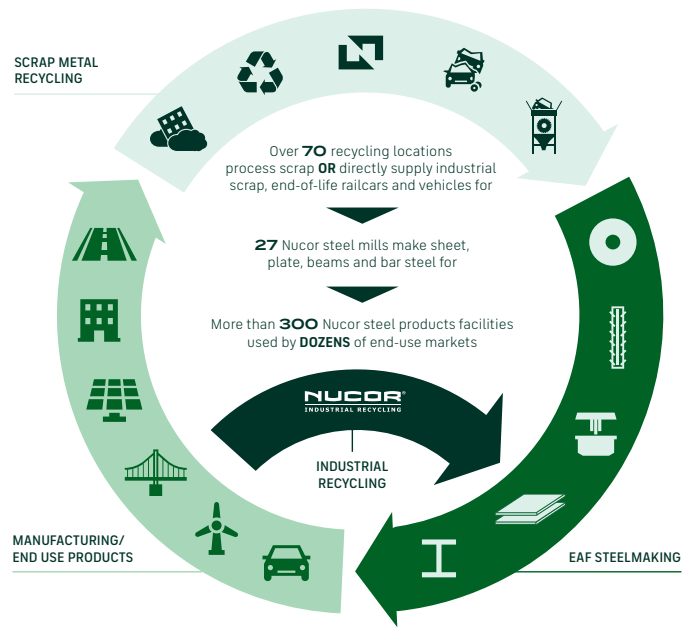
WATER USAGE

Nucor uses **98% LESS** water than an average steel mill

OUR FOCUS: BECOME THE WORLD'S SAFEST STEEL COMPANY



VERTICAL INTEGRATION & PRODUCT LIFECYCLE



COMMITMENT TO EDUCATION

Every Nucor teammate and their dependents are eligible to receive a **\$4,000-per-year** scholarship to college or vocational school. Nationwide, more than **\$115 million** has been awarded to almost **25,000** children since the program's inception in 1974.

*Greenhouse Gas (GHG) emissions: Scope 1 = direct emissions from operations; Scope 2 = indirect emissions from purchased electricity