

LARGEST STEEL & STEEL PRODUCTS PRODUCER
IN THE UNITED STATES

LARGEST RECYCLER
OF ANY TYPE OF MATERIAL IN NORTH AMERICA

NUCOR RECYCLES MORE THAN **20 MILLION TONS** OF FERROUS SCRAP ANNUALLY TO PRODUCE NEW STEEL THAT IS 100% RECYCLABLE

31,000 TEAMMATES
WORKING SAFELY AT OVER 300 OPERATING FACILITIES IN NORTH AMERICA

FORTUNE
THE WORLD'S MOST
ADMIRED
COMPANIES' **2023**

RANKED #1 IN OUR INDUSTRY
TWO YEARS IN A ROW

FORTUNE
BEST WORKPLACES
IN MANUFACTURING
AND PRODUCTION' **2023**

TWO YEARS IN A ROW



2,000
NUCOR STEEL JOBS IN TEXAS

\$125,000+
MEDIAN PAY FOR ALL NUCOR TEAMMATES NATIONWIDE
OVER THE LAST 3 YEARS (EXCLUDING EXECUTIVES)

\$41.5 BILLION
NET SALES IN 2022



NUCOR

NUCOR STEEL - TEXAS
NUCOR BUILDINGS GROUP - TEXAS
VULCRAFT - TEXAS
NUCOR INSULATED PANEL GROUP

NUCOR WAREHOUSE SYSTEMS

JEWETT
TERRELL
GRAPELAND
LEWISVILLE
LEWISVILLE
HOUSTON

BAR STEEL MILL
METAL BUILDING SYSTEMS
STEEL JOISTS & DECKING
INSULATED METAL PANELS
GROUP HEADQUARTERS
STEEL RACKING PRODUCTS



NUCOR RAW MATERIALS GROUP

TEXAS PORT RECYCLING

DJJ METALS BROKERAGE

CONROE
HOUSTON (PORT)
HOUSTON (PINEMONT)
VICTORIA
HOUSTON

SCRAP METAL RECYCLING

METALS TRADING OFFICE



NUCOR HARRIS REBAR

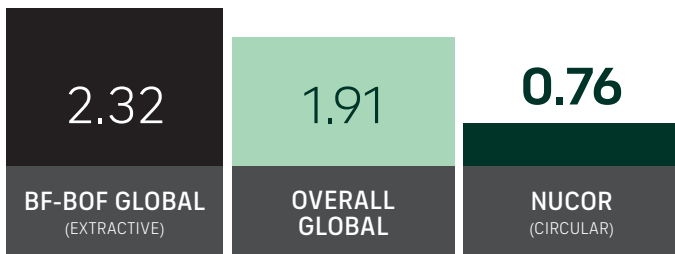
DALLAS
DAYTON
JEWETT

REBAR FABRICATION & INSTALLATION

GLOBAL LEADER IN STEELMAKING SUSTAINABILITY

STEELMAKING GREENHOUSE GAS EMISSIONS

Average CO₂ emitted for every ton of steel produced
Scopes 1, 2 & 3*



Nucor's GHG intensity is only 1/3 of the average extractive steel producer.

*Nucor data is for 2022. Global and Integrated averages are from 2021, the most recent data available.

RECYCLED CONTENT

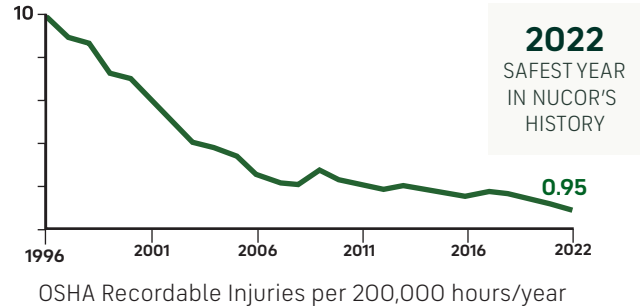
The recycled content of Nucor's steel nationwide



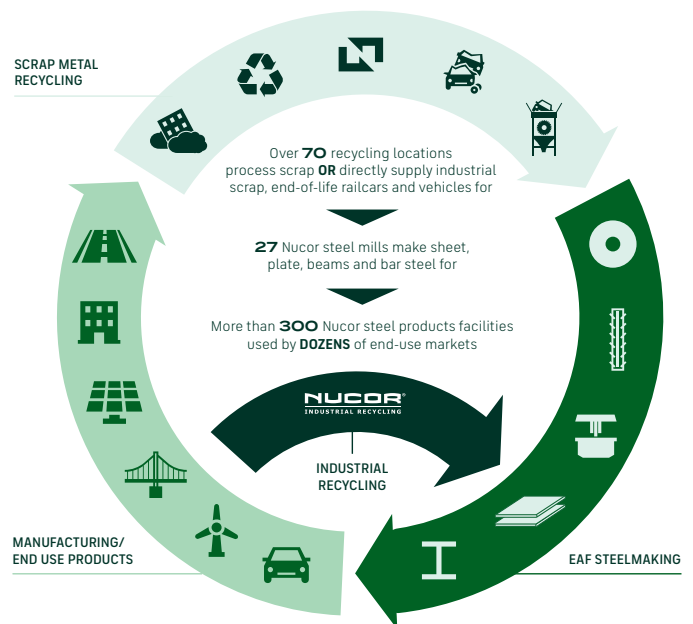
WATER USAGE

Nucor uses **98% LESS** water than an average steel mill

OUR FOCUS: BECOME THE WORLD'S SAFEST STEEL COMPANY



VERTICAL INTEGRATION & PRODUCT LIFECYCLE



COMMITMENT TO EDUCATION

Every Nucor teammate and their dependents are eligible to receive a **\$4,000-per-year** scholarship to college or vocational school. Nationwide, more than **\$115 million** has been awarded to almost **25,000** children since the program's inception in 1974.

*Greenhouse Gas (GHG) emissions: Scope 1 = direct emissions from operations; Scope 2 = indirect emissions from purchased electricity