

LARGEST STEEL & STEEL PRODUCTS PRODUCER

IN THE UNITED STATES

LARGEST RECYCLER

OF ANY TYPE OF MATERIAL IN NORTH AMERICA

NUCOR RECYCLES MORE THAN **20 MILLION TONS** OF FERROUS SCRAP ANNUALLY TO PRODUCE NEW STEEL THAT IS 100% RECYCLABLE

31,000 TEAMMATES

WORKING SAFELY AT OVER 300 OPERATING FACILITIES IN NORTH AMERICA

FORTUNE

THE WORLD'S MOST ADMIRED COMPANIES 2023

RANKED #1 IN OUR INDUSTRY TWO YEARS IN A ROW

FORTUNE

BEST WORKPLACES IN MANUFACTURING AND PRODUCTION 2023

TWO YEARS IN A ROW



700

NUCOR STEEL JOBS IN MISSOURI

\$125,000+

MEDIAN PAY FOR ALL NUCOR TEAMMATES NATIONWIDE OVER THE LAST 3 YEARS (EXCLUDING EXECUTIVES)

\$41.5 BILLION

NET SALES IN 2022



NUCOR

NUCOR STEEL SEDALIA
NUCOR LMP STEEL, INC.
NUCOR ST. LOUIS COLD DRAWN

SEDALIA
MARYVILLE
ST. LOUIS

REBAR MICROMILL
COLD FINISHED STEEL BAR
COLD FINISHED STEEL BAR



NUCOR RAW MATERIALS GROUP

ADVANTAGE METALS RECYCLING

COLUMBIA
KANSAS CITY
SEDALIA
ST. JOSEPH
ST. LOUIS
ST. LOUIS

SCRAP METAL RECYCLING

DJJ SCRAP MANAGEMENT

SCRAP MANAGEMENT OFFICE



NUCOR HARRIS REBAR

AMBASSADOR STEEL FAB. INC.

KANSAS CITY
ST. LOUIS

REBAR FABRICATION & INSTALLATION



NUCOR SKYLINE STEEL

SKYLINE STEEL

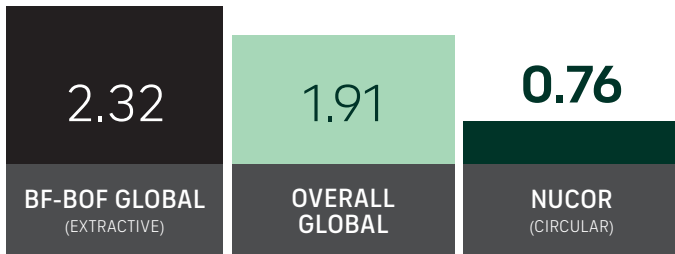
EARTH CITY

INTERNATIONAL SALES OFFICE

GLOBAL LEADER IN STEELMAKING SUSTAINABILITY

STEELMAKING GREENHOUSE GAS EMISSIONS

Average CO₂ emitted for every ton of steel produced
Scopes 1, 2 & 3*

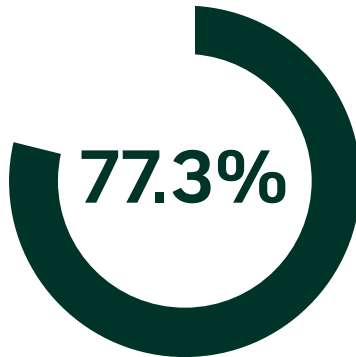


Nucor's GHG intensity is only 1/3 of the average extractive steel producer.

*Nucor data is for 2022. Global and Integrated averages are from 2021, the most recent data available.

RECYCLED CONTENT

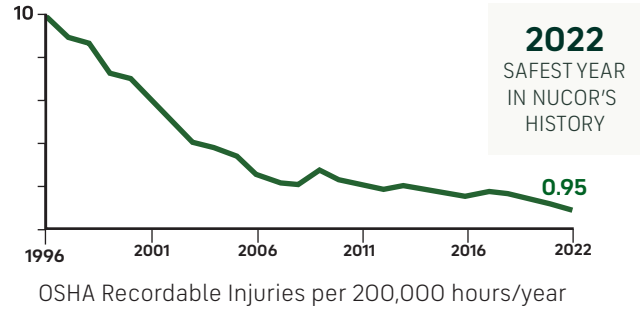
The recycled content of Nucor's steel nationwide



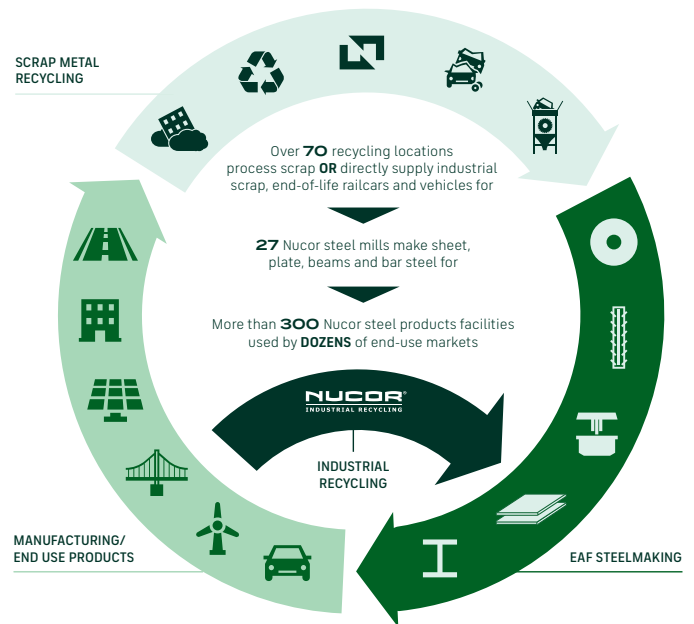
WATER USAGE

Nucor uses **98% LESS** water than an average steel mill

OUR FOCUS: BECOME THE WORLD'S SAFEST STEEL COMPANY



VERTICAL INTEGRATION & PRODUCT LIFECYCLE



COMMITMENT TO EDUCATION

Every Nucor teammate and their dependents are eligible to receive a **\$4,000-per-year** scholarship to college or vocational school. Nationwide, more than **\$115 million** has been awarded to almost **25,000** children since the program's inception in 1974.

*Greenhouse Gas (GHG) emissions: Scope 1 = direct emissions from operations; Scope 2 = indirect emissions from purchased electricity