

## LARGEST STEEL & STEEL PRODUCTS PRODUCER IN THE UNITED STATES

## LARGEST RECYCLER OF ANY TYPE OF MATERIAL IN NORTH AMERICA

NUCOR RECYCLED **~23 MILLION TONS**  
OF FERROUS SCRAP IN 2021 TO PRODUCE  
NEW STEEL THAT IS 100% RECYCLABLE

**30,000 TEAMMATES**  
WORKING SAFELY AT OVER 300 OPERATING  
FACILITIES IN NORTH AMERICA

**FORTUNE  
BEST**  
WORKPLACES IN  
MANUFACTURING  
AND PRODUCTION™  
— 2022 —

**FORTUNE**  
RANKED #1 IN OUR INDUSTRY  
**THE WORLD'S  
MOST ADMIRED  
COMPANIES®**  
— 2022 —



**2,300**

NUCOR STEEL JOBS IN INDIANA

**\$100,000+**

MEDIAN PAY FOR ALL NUCOR TEAMMATES NATIONWIDE  
OVER THE LAST 3 YEARS (EXCLUDING EXECUTIVES)

**\$36.5 BILLION**

NET SALES IN 2021



### NUCOR

NUCOR STEEL - INDIANA  
NUCOR FASTENER - INDIANA

VULCRAFT - INDIANA

NUCOR BUILDING SYSTEMS - INDIANA  
NUCOR TUBULAR PRODUCTS MADISON  
METL-SPAN  
TRUECORE INDIANA (2023)

CRAWFORDSVILLE  
ST. JOE  
SHELBYVILLE  
ST. JOE

WATERLOO  
MADISON  
SHELBYVILLE  
WATERLOO

SHEET STEEL MILL  
STEEL FASTENERS  
COIL PROCESSING  
STEEL FLOOR & ROOF DECK &  
STEEL JOISTS  
METAL BUILDING SYSTEMS  
WELDED STEEL TUBE  
INSULATED METAL PANELS  
INSULATED METAL PANELS



### DAVID J. JOSEPH COMPANY

RIVERS METALS RECYCLING

U-PULL-&-PAY

GREENSBURG  
NEW ALBANY  
NORTH VERNON  
INDIANAPOLIS

SCRAP METAL RECYCLING  
SELF-SERVE AUTO PARTS



### HARRIS REBAR

AMBASSADOR STEEL FAB. LLC

MOORESVILLE

REBAR FABRICATION & INSTALLATION



### NUMIT LLC 50% Joint Venture

STEEL TECHNOLOGIES

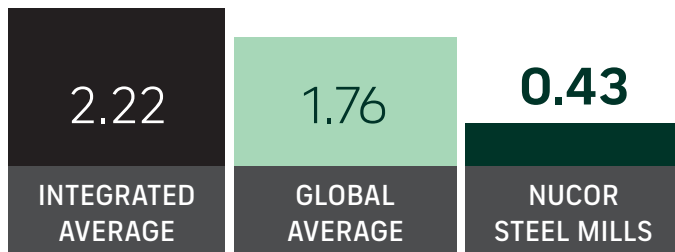
CRAWFORDSVILLE  
GREENSBURG  
JEFFERSONVILLE  
MISHAWAKA  
PORTAGE

SHEET STEEL PROCESSING

## GLOBAL LEADER IN STEELMAKING SUSTAINABILITY

### STEELMAKING GREENHOUSE GAS EMISSIONS

Average CO<sub>2</sub> emitted for every ton of steel produced  
Scope 1 & Scope 2\*



Nucor's GHG Intensity is approx. **ONE-FOURTH** the global average, and **ONE-FIFTH** of the average integrated (BF/BOF) steel producer

\*Nucor data is for 2021. Global and Integrated averages are from 2020, the most recent data available.

## RECYCLED CONTENT

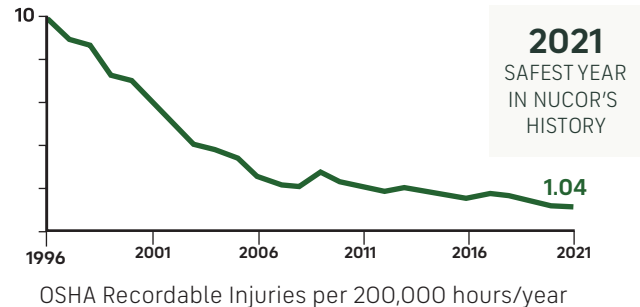
The recycled content of Nucor's steel nationwide



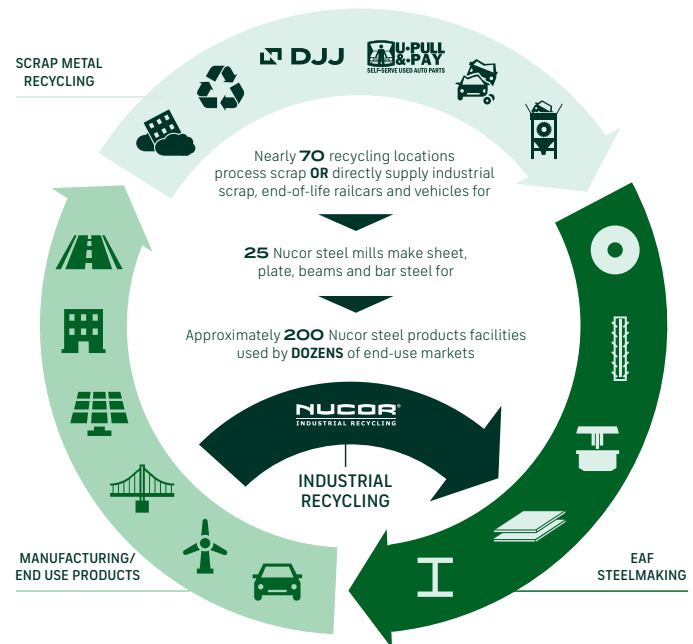
## WATER USAGE

Nucor uses **98% LESS** water than an average steel mill

## OUR FOCUS: BECOME THE WORLD'S SAFEST STEEL COMPANY



## VERTICAL INTEGRATION & PRODUCT LIFECYCLE



## COMMITMENT TO EDUCATION

Every Nucor teammate and their dependents are eligible to receive a **\$4,000-per-year** scholarship to college or vocational school. Nationwide, more than **\$115 million** has been awarded to almost **25,000** children since the program's inception in 1974.

\*Greenhouse Gas (GHG) emissions: Scope 1 = direct emissions from operations; Scope 2 = indirect emissions from purchased electricity