

LARGEST STEEL & STEEL PRODUCTS PRODUCER
IN THE UNITED STATES

LARGEST RECYCLER
OF ANY TYPE OF MATERIAL IN NORTH AMERICA

NUCOR RECYCLES MORE THAN **20 MILLION TONS** OF FERROUS SCRAP ANNUALLY TO PRODUCE NEW STEEL THAT IS 100% RECYCLABLE

31,000 TEAMMATES
WORKING SAFELY AT OVER 300 OPERATING FACILITIES IN NORTH AMERICA

FORTUNE
THE WORLD'S MOST
ADMIRED
COMPANIES' **2023**

RANKED #1 IN OUR INDUSTRY
TWO YEARS IN A ROW

FORTUNE
BEST WORKPLACES
IN MANUFACTURING
AND PRODUCTION' **2023**

TWO YEARS IN A ROW



2,500
NUCOR STEEL JOBS IN INDIANA

\$125,000+
MEDIAN PAY FOR ALL NUCOR TEAMMATES NATIONWIDE
OVER THE LAST 3 YEARS (EXCLUDING EXECUTIVES)

\$41.5 BILLION
NET SALES IN 2022



NUCOR

NUCOR STEEL - INDIANA
NUCOR FASTENER - INDIANA

VULCRAFT - INDIANA
NUCOR BUILDING SYSTEMS - INDIANA
NUCOR TUBULAR PRODUCTS MADISON
NUCOR INSULATED PANEL GROUP

C.H.I. OVERHEAD DOORS

CRAWFORDSVILLE
ST. JOE
SHELBYVILLE
ST. JOE
WATERLOO
MADISON
SHELBYVILLE
WATERLOO (2023)
TERRE HAUTE

SHEET STEEL MILL
STEEL FASTENERS
COIL PROCESSING
STEEL FLOOR & ROOF DECK & STEEL JOISTS
METAL BUILDING SYSTEMS
WELDED STEEL TUBE
INSULATED METAL PANELS
OVERHEAD DOORS



NUCOR RAW MATERIALS GROUP

RIVER METALS RECYCLING

U-PULL-&-PAY

GREENSBURG
NEW ALBANY
NORTH VERNON
INDIANAPOLIS

SCRAP METAL RECYCLING
SELF SERVICE USED AUTO PARTS



NUCOR HARRIS REBAR

AMBASSADOR CORPORATE OFFICE
AMBASSADOR STEEL FAB. LLC

AUBURN
MOORESVILLE

CORPORATE OFFICE
REBAR FABRICATION & INSTALLATION



NUMIT LLC 50% Joint Venture

STEEL TECHNOLOGIES

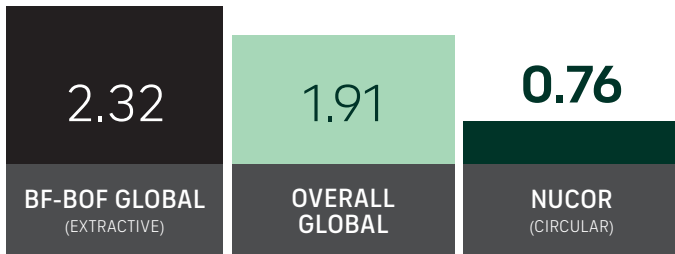
CRAWFORDSVILLE
GREENSBURG
JEFFERSONVILLE
MISHAWAKA
PORTAGE

SHEET STEEL PROCESSING

GLOBAL LEADER IN STEELMAKING SUSTAINABILITY

STEELMAKING GREENHOUSE GAS EMISSIONS

Average CO₂ emitted for every ton of steel produced
Scopes 1, 2 & 3*

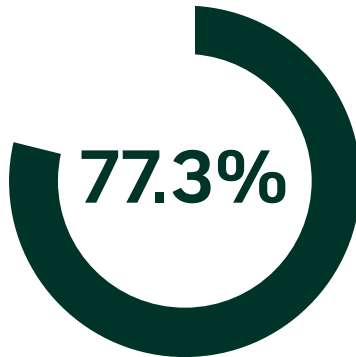


Nucor's GHG intensity is only 1/3 of the average extractive steel producer.

*Nucor data is for 2022. Global and Integrated averages are from 2021, the most recent data available.

RECYCLED CONTENT

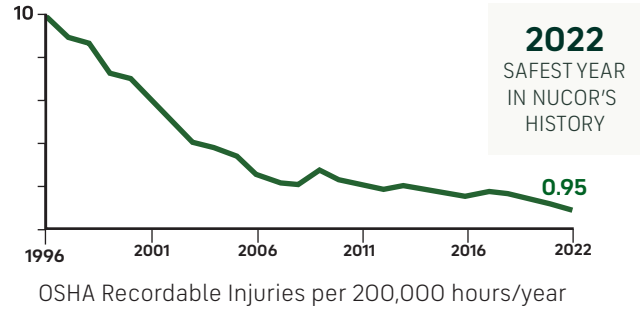
The recycled content of Nucor's steel nationwide



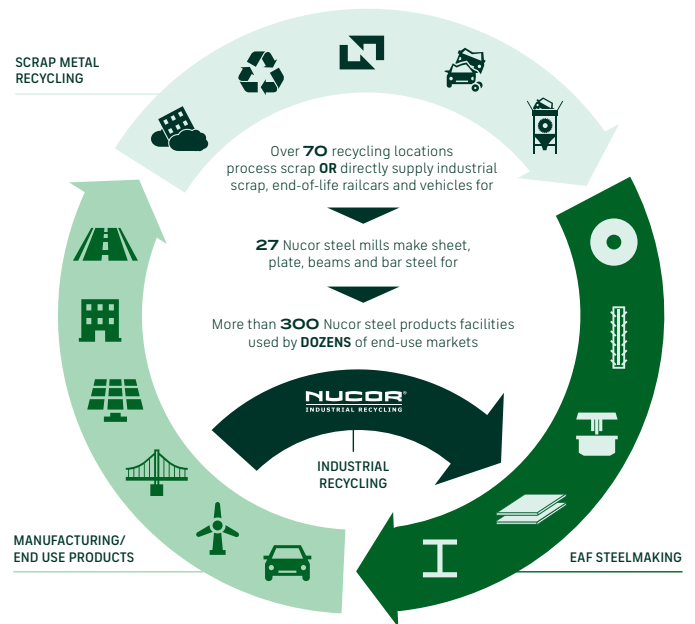
WATER USAGE

Nucor uses **98% LESS** water than an average steel mill

OUR FOCUS: BECOME THE WORLD'S SAFEST STEEL COMPANY



VERTICAL INTEGRATION & PRODUCT LIFECYCLE



COMMITMENT TO EDUCATION

Every Nucor teammate and their dependents are eligible to receive a **\$4,000-per-year** scholarship to college or vocational school. Nationwide, more than **\$115 million** has been awarded to almost **25,000** children since the program's inception in 1974.

*Greenhouse Gas (GHG) emissions: Scope 1 = direct emissions from operations; Scope 2 = indirect emissions from purchased electricity