

LARGEST STEEL & STEEL PRODUCTS PRODUCER
IN THE UNITED STATES

LARGEST RECYCLER
OF ANY TYPE OF MATERIAL IN NORTH AMERICA

NUCOR RECYCLES MORE THAN **20 MILLION TONS** OF FERROUS SCRAP ANNUALLY TO PRODUCE NEW STEEL THAT IS 100% RECYCLABLE

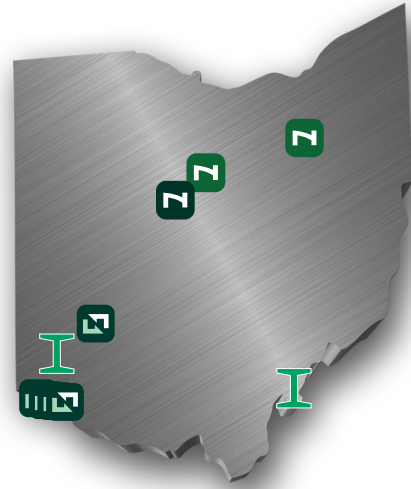
31,000 TEAMMATES
WORKING SAFELY AT OVER 300 OPERATING FACILITIES IN NORTH AMERICA

FORTUNE
THE WORLD'S MOST
ADMIRED
COMPANIES **2023**

RANKED #1 IN OUR INDUSTRY
TWO YEARS IN A ROW

FORTUNE
BEST WORKPLACES
IN MANUFACTURING
AND PRODUCTION **2023**

TWO YEARS IN A ROW



600
NUCOR STEEL JOBS IN OHIO

\$100,000+
MEDIAN PAY FOR ALL NUCOR TEAMMATES NATIONWIDE
OVER THE LAST 3 YEARS (EXCLUDING EXECUTIVES)

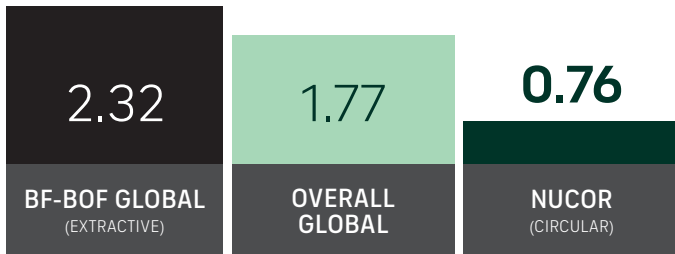
\$41.5 BILLION
NET SALES IN 2022

Z NUCOR NUCOR STEEL MARION, INC. NUCOR BRIGHT BAR OHIO	MARION ORRVILLE	BAR STEEL MILL COLD FINISHED STEEL BAR
□ NUCOR RAW MATERIALS GROUP DAVID J. JOSEPH COMPANY FERROUS/NON-FERROUS TRADING RIVER METALS RECYCLING RAIL EQUIPMENT GROUP	CINCINNATI CINCINNATI CINCINNATI XENIA CINCINNATI	CORPORATE HEADQUARTERS SCRAP METAL BROKERAGE] SCRAP METAL RECYCLING RAIL EQUIPMENT LEASING & MARKETING
Z NUCOR HARRIS REBAR AMBASSADOR STEEL FAB. LLC	MARION	REBAR FABRICATION & INSTALLATION
I NUCOR SKYLINE STEEL	BELPRE WEST CHESTER	SHEET STEEL PILING STEEL PILING SALES

GLOBAL LEADER IN STEELMAKING SUSTAINABILITY

STEELMAKING GREENHOUSE GAS EMISSIONS

Average CO₂ emitted for every ton of steel produced
Scopes 1, 2 & 3*

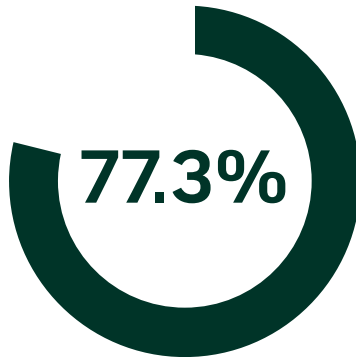


Nucor's GHG intensity is only 1/3 of the average extractive steel producer.

*Nucor data is for 2022. Global and Integrated averages are from 2021, the most recent data available.

RECYCLED CONTENT

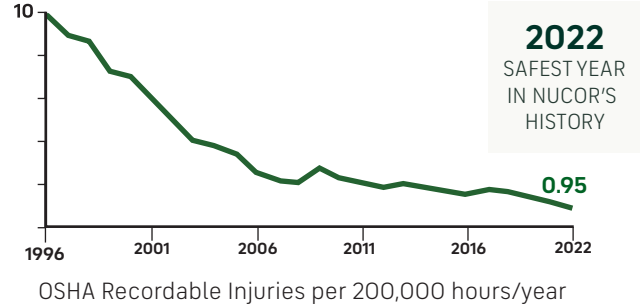
The recycled content of Nucor's steel nationwide



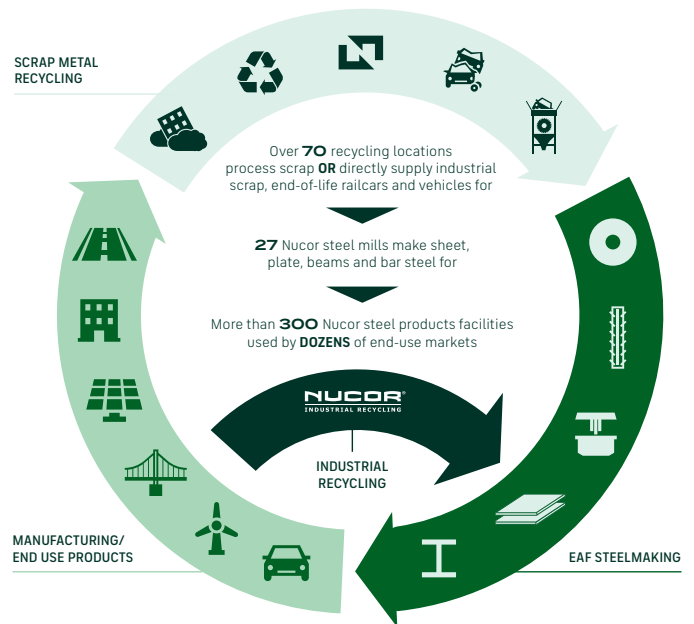
WATER USAGE

Nucor uses **98% LESS** water than an average steel mill

OUR FOCUS: BECOME THE WORLD'S SAFEST STEEL COMPANY



VERTICAL INTEGRATION & PRODUCT LIFECYCLE



COMMITMENT TO EDUCATION

Every Nucor teammate and their dependents are eligible to receive a **\$4,000-per-year** scholarship to college or vocational school. Nationwide, more than **\$115 million** has been awarded to almost **25,000** children since the program's inception in 1974.

*Greenhouse Gas (GHG) emissions: Scope 1 = direct emissions from operations; Scope 2 = indirect emissions from purchased electricity