

LARGEST STEEL & STEEL PRODUCTS PRODUCER

IN THE UNITED STATES

LARGEST RECYCLER

OF ANY TYPE OF MATERIAL IN NORTH AMERICA

NUCOR RECYCLES MORE THAN **20 MILLION TONS** OF FERROUS SCRAP ANNUALLY TO PRODUCE NEW STEEL THAT IS 100% RECYCLABLE

31,000 TEAMMATES

WORKING SAFELY AT OVER 300 OPERATING FACILITIES IN NORTH AMERICA

FORTUNE

THE WORLD'S MOST
ADMIRABLE
COMPANIES' 2023

RANKED #1 IN OUR INDUSTRY
TWO YEARS IN A ROW

FORTUNE

BEST WORKPLACES
IN MANUFACTURING
AND PRODUCTION' 2023

TWO YEARS IN A ROW



275

NUCOR STEEL JOBS IN PENNSYLVANIA

\$125,000+

MEDIAN PAY FOR ALL NUCOR TEAMMATES NATIONWIDE
OVER THE LAST 3 YEARS (EXCLUDING EXECUTIVES)

\$41.5 BILLION

NET SALES IN 2022



NUCOR

NUCOR INSULATED PANEL GROUP
NUCOR TOWERS AND STRUCTURES

CORAOPOLIS
WEST HAZELTON

INSULATED METAL PANELS
UTILITY INFRASTRUCTURE



NUCOR RAW MATERIALS GROUP

DJJ METALS TRADING
GEMINI RECYCLING

PHILADELPHIA
PITTSBURGH

METALS BROKERAGE OFFICE
INDUSTRIAL SCRAP MANAGEMENT



NUCOR HARRIS REBAR

BARKER STEEL MID-ATLANTIC LLC

BETHLEHEM

REBAR FABRICATION & INSTALLATION



NUCOR SKYLINE STEEL

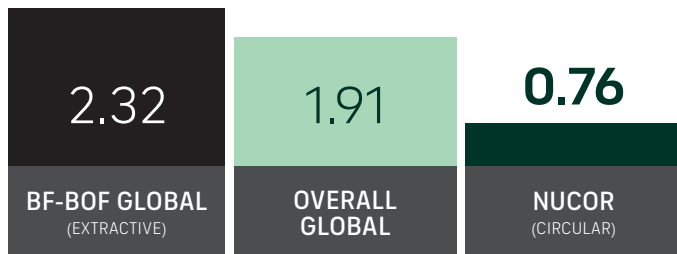
PITTSBURGH
CAMP HILL
FAIRLESS HILLS

STEEL PILING SALES
THREADED BAR
STEEL PIPE PILING

GLOBAL LEADER IN STEELMAKING SUSTAINABILITY

STEELMAKING GREENHOUSE GAS EMISSIONS

Average CO₂ emitted for every ton of steel produced
Scopes 1, 2 & 3*



Nucor's GHG intensity is only 1/3 of the average extractive steel producer.

*Nucor data is for 2022. Global and Integrated averages are from 2021, the most recent data available.

RECYCLED CONTENT

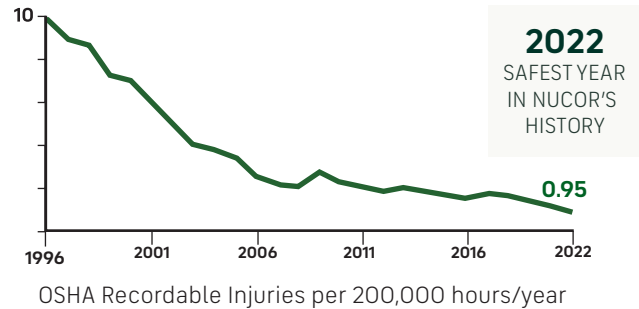
The recycled content of Nucor's steel nationwide



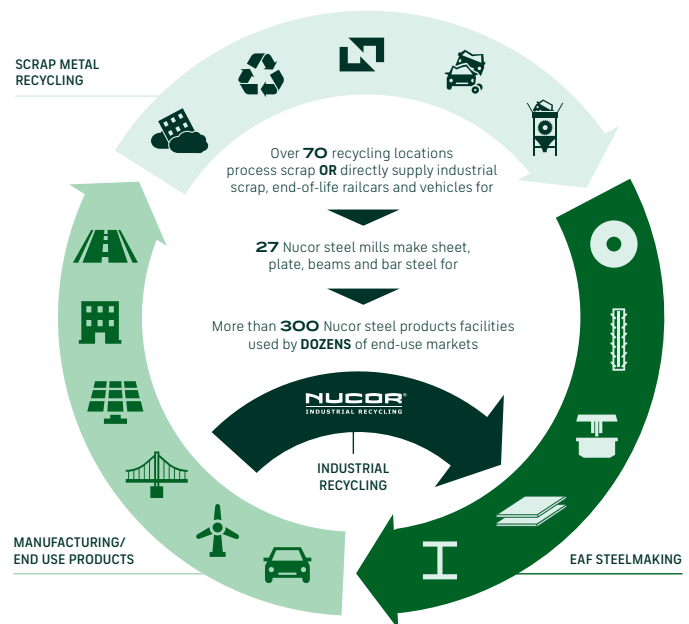
WATER USAGE

Nucor uses **98% LESS** water than an average steel mill

OUR FOCUS: BECOME THE WORLD'S SAFEST STEEL COMPANY



VERTICAL INTEGRATION & PRODUCT LIFECYCLE



COMMITMENT TO EDUCATION

Every Nucor teammate and their dependents are eligible to receive a **\$4,000-per-year** scholarship to college or vocational school. Nationwide, more than **\$115 million** has been awarded to almost **25,000** children since the program's inception in 1974.

*Greenhouse Gas (GHG) emissions: Scope 1 = direct emissions from operations; Scope 2 = indirect emissions from purchased electricity