

**LARGEST STEEL & STEEL
PRODUCTS PRODUCER**
IN THE UNITED STATES

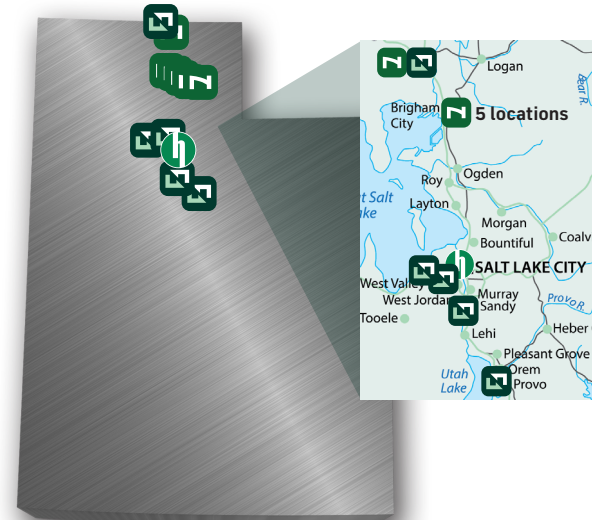
LARGEST RECYCLER
OF ANY TYPE OF MATERIAL IN NORTH AMERICA

NUCOR RECYCLED **~23 MILLION TONS**
OF FERROUS SCRAP IN 2021 TO PRODUCE
NEW STEEL THAT IS 100% RECYCLABLE

30,000 TEAMMATES
WORKING SAFELY AT OVER 300 OPERATING
FACILITIES IN NORTH AMERICA

**FORTUNE
BEST**
WORKPLACES IN
MANUFACTURING
AND PRODUCTION™
— 2022 —

FORTUNE
RANKED #1 IN OUR INDUSTRY
**THE WORLD'S
MOST ADMIRED
COMPANIES®**
— 2022 —



1,600
NUCOR STEEL JOBS IN UTAH

\$100,000+
MEDIAN PAY FOR ALL NUCOR TEAMMATES NATIONWIDE
OVER THE LAST 3 YEARS (EXCLUDING EXECUTIVES)

\$36.5 BILLION
NET SALES IN 2021



NUCOR

NUCOR STEEL - UTAH
NUCOR COLD FINISH - UTAH
NUCOR WIRE PRODUCTS UTAH, INC.
VULCRAFT - UTAH
NUCOR BUILDINGS GROUP - UTAH
VULCRAFT GRATING

PLYMOUTH
BRIGHAM CITY
BRIGHAM CITY
BRIGHAM CITY
BRIGHAM CITY
BRIGHAM CITY

BAR STEEL MILL
COLD FINISH STEEL BAR
STEEL WIRE
STEEL JOISTS & DECKING
METAL BUILDING SYSTEMS
STEEL BAR GRATING



WESTERN METALS RECYCLING

Affiliate of the David J. Joseph Company (DJJ)

FERROUS TRADING OFFICE

SANDY
PLYMOUTH
PROVO
SALT LAKE CITY
SALT LAKE CITY

WMR HEADQUARTERS
SCRAP METAL RECYCLING
SCRAP METALS BROKERAGE



HARRIS REBAR

HARRIS REBAR SALT LAKE INC.

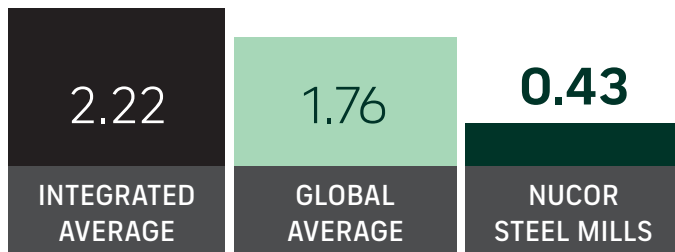
SALT LAKE CITY

REBAR FABRICATION & INSTALLATION

GLOBAL LEADER IN STEELMAKING SUSTAINABILITY

STEELMAKING GREENHOUSE GAS EMISSIONS

Average CO₂ emitted for every ton of steel produced
Scope 1 & Scope 2*



Nucor's GHG Intensity is approx. **ONE-FOURTH** the global average, and **ONE-FIFTH** of the average integrated (BF/BOF) steel producer

*Nucor data is for 2021. Global and Integrated averages are from 2020, the most recent data available.

RECYCLED CONTENT

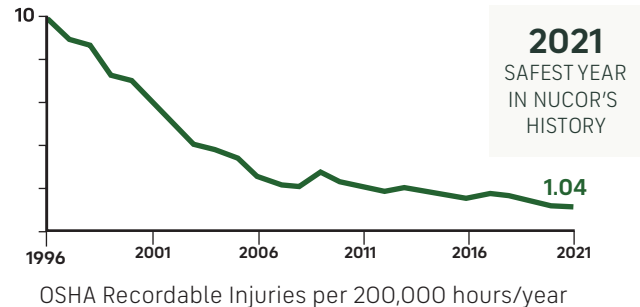
The recycled content of Nucor's steel nationwide



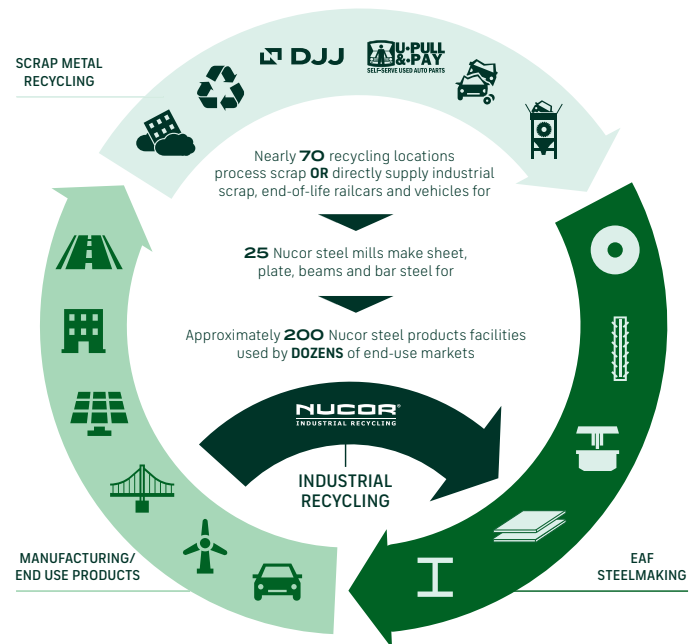
WATER USAGE

Nucor uses **98% LESS** water than an average steel mill

OUR FOCUS: BECOME THE WORLD'S SAFEST STEEL COMPANY



VERTICAL INTEGRATION & PRODUCT LIFECYCLE



COMMITMENT TO EDUCATION

Every Nucor teammate and their dependents are eligible to receive a **\$4,000-per-year** scholarship to college or vocational school. Nationwide, more than **\$115 million** has been awarded to almost **25,000** children since the program's inception in 1974.

*Greenhouse Gas (GHG) emissions: Scope 1 = direct emissions from operations; Scope 2 = indirect emissions from purchased electricity