

LARGEST STEEL & STEEL PRODUCTS PRODUCER
IN THE UNITED STATES

LARGEST RECYCLER
OF ANY TYPE OF MATERIAL IN NORTH AMERICA

NUCOR RECYCLES MORE THAN **20 MILLION TONS** OF FERROUS SCRAP ANNUALLY TO PRODUCE NEW STEEL THAT IS 100% RECYCLABLE

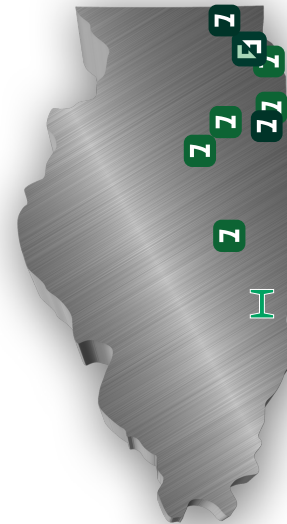
31,000 TEAMMATES
WORKING SAFELY AT OVER 300 OPERATING FACILITIES IN NORTH AMERICA

FORTUNE
THE WORLD'S MOST
ADMIRED
COMPANIES' **2023**

RANKED #1 IN OUR INDUSTRY
TWO YEARS IN A ROW

FORTUNE
BEST WORKPLACES
IN MANUFACTURING
AND PRODUCTION' **2023**

TWO YEARS IN A ROW



1,500
NUCOR STEEL JOBS IN ILLINOIS

\$125,000+
MEDIAN PAY FOR ALL NUCOR TEAMMATES NATIONWIDE
OVER THE LAST 3 YEARS (EXCLUDING EXECUTIVES)

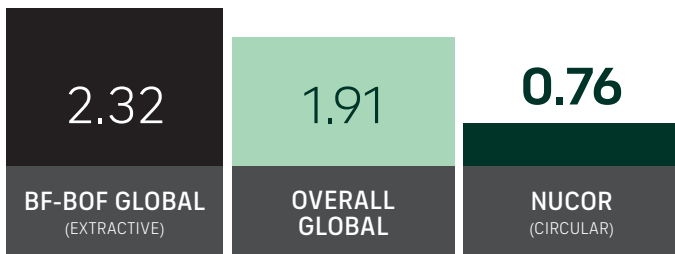
\$41.5 BILLION
NET SALES IN 2022

Z	NUCOR NUCOR STEEL KANKAKEE, INC. NUCOR TUBULAR PRODUCTS - CHICAGO NUCOR TUBULAR PRODUCTS - MARSEILLES AMERICAN BUILDINGS COMPANY - ILLINOIS C.H.I. OVERHEAD DOORS	BOURBONNAIS CHICAGO MARSEILLES EL PASO ARTHUR	BAR STEEL MILL STRUCTURAL STEEL TUBING STEEL BUILDINGS OVERHEAD DOORS
F	NUCOR RAW MATERIALS GROUP FERROUS TRADING OFFICE	CHICAGO	SCRAP METAL BROKERAGE
Z	NUCOR HARRIS REBAR HARRIS REBAR ROCKFORD INC. AMBASSADOR STEEL FAB. LLC	BELVIDERE BOURBONNAIS	REBAR FABRICATION & INSTALLATION REBAR FABRICATION & INSTALLATION
I	NUCOR SKYLINE STEEL SKYLINE STEEL ROLLED & WELDED	NEWTON	ROLLED & WELDED PIPE

GLOBAL LEADER IN STEELMAKING SUSTAINABILITY

STEELMAKING GREENHOUSE GAS EMISSIONS

Average CO₂ emitted for every ton of steel produced
Scopes 1, 2 & 3*

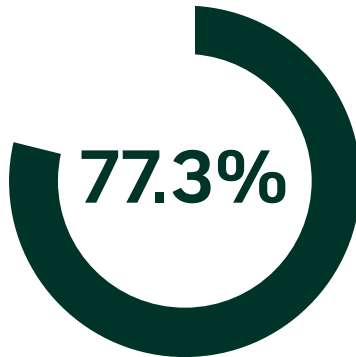


Nucor's GHG intensity is only 1/3 of the average extractive steel producer.

*Nucor data is for 2022. Global and Integrated averages are from 2021, the most recent data available.

RECYCLED CONTENT

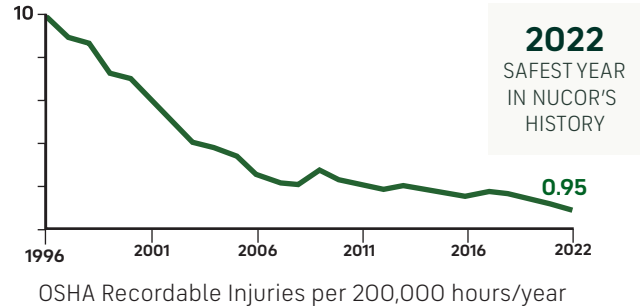
The recycled content of Nucor's steel nationwide



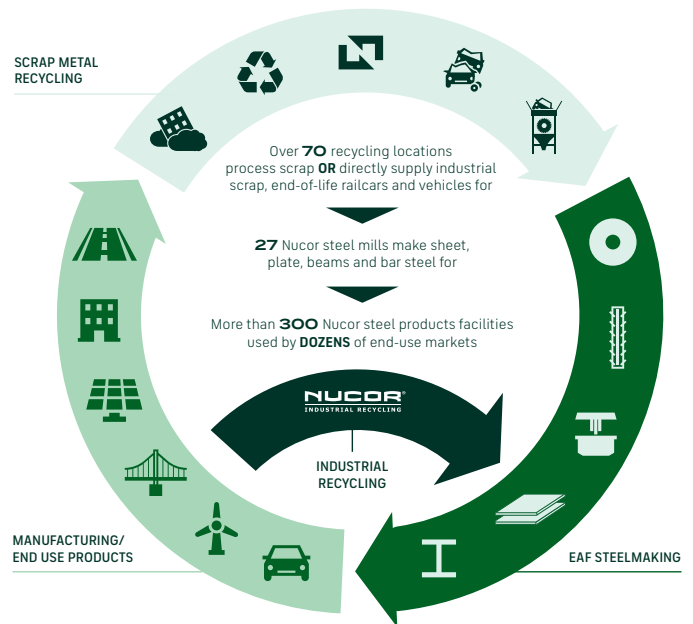
WATER USAGE

Nucor uses **98% LESS** water than an average steel mill

OUR FOCUS: BECOME THE WORLD'S SAFEST STEEL COMPANY



VERTICAL INTEGRATION & PRODUCT LIFECYCLE



COMMITMENT TO EDUCATION

Every Nucor teammate and their dependents are eligible to receive a **\$4,000-per-year** scholarship to college or vocational school. Nationwide, more than **\$115 million** has been awarded to almost **25,000** children since the program's inception in 1974.

*Greenhouse Gas (GHG) emissions: Scope 1 = direct emissions from operations; Scope 2 = indirect emissions from purchased electricity