

LARGEST STEEL & STEEL PRODUCTS PRODUCER
IN THE UNITED STATES

LARGEST RECYCLER
OF ANY TYPE OF MATERIAL IN NORTH AMERICA

NUCOR RECYCLES MORE THAN **20 MILLION TONS** OF FERROUS SCRAP ANNUALLY TO PRODUCE NEW STEEL THAT IS 100% RECYCLABLE

31,000 TEAMMATES
WORKING SAFELY AT OVER 300 OPERATING FACILITIES IN NORTH AMERICA

FORTUNE
THE WORLD'S MOST
ADMIRED
COMPANIES' **2023**

RANKED #1 IN OUR INDUSTRY
TWO YEARS IN A ROW

FORTUNE
BEST WORKPLACES
IN MANUFACTURING
AND PRODUCTION' **2023**

TWO YEARS IN A ROW



2,500
NUCOR STEEL JOBS IN ALABAMA

\$125,000+
MEDIAN PAY FOR ALL NUCOR TEAMMATES NATIONWIDE
OVER THE LAST 3 YEARS (EXCLUDING EXECUTIVES)

\$41.5 BILLION
NET SALES IN 2022



NUCOR

NUCOR STEEL BIRMINGHAM, INC.
NUCOR STEEL DECATUR, LLC
NUCOR STEEL TUSCALOOSA, INC.
NUCOR TOWERS AND STRUCTURES (ANNOUNCED)
NUCOR TUBULAR PRODCUTS - DECATUR
NUCOR TUBULAR PRODUCTS - TRINITY
NUCOR TUBULAR PRODUCTS - SOUTH
VULCRAFT - ALABAMA

BIRMINGHAM
DECATUR
TUSCALOOSA
DECATUR
DECATUR
TRINITY
BIRMINGHAM
FORT PAYNE

BAR STEEL MILL
SHEET STEEL MILL
PLATE STEEL MILL
UTILITY INFRASTRUCTURE
HOLLOW STRUCTURAL
SECTION STEEL TUBING
STEEL JOISTS & DECKING



NUCOR RAW MATERIALS GROUP

RIVER METALS RECYCLING
FERROUS TRADING OFFICE

DECATUR
BIRMINGHAM

SCRAP METAL RECYCLING
SCRAP METAL BROKERAGE



NUCOR HARRIS REBAR

HARRIS REBAR - BIRMINGHAM

RIVERSIDE

REBAR FABRICATION & INSTALLATION



NUCOR SKYLINE STEEL

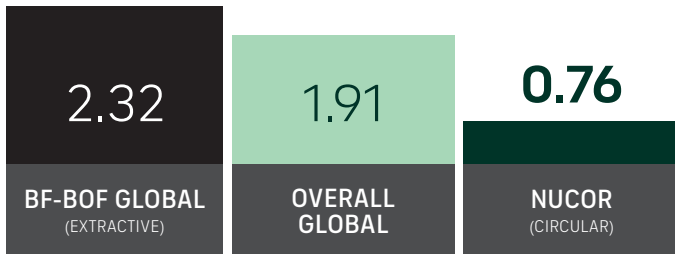
BIRMINGHAM

SHEET PILING SALES

GLOBAL LEADER IN STEELMAKING SUSTAINABILITY

STEELMAKING GREENHOUSE GAS EMISSIONS

Average CO₂ emitted for every ton of steel produced
Scopes 1, 2 & 3*

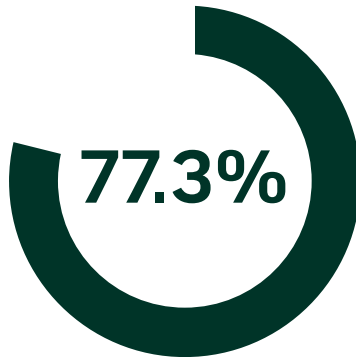


Nucor's GHG intensity is only 1/3 of the average extractive steel producer.

*Nucor data is for 2022. Global and Integrated averages are from 2021, the most recent data available.

RECYCLED CONTENT

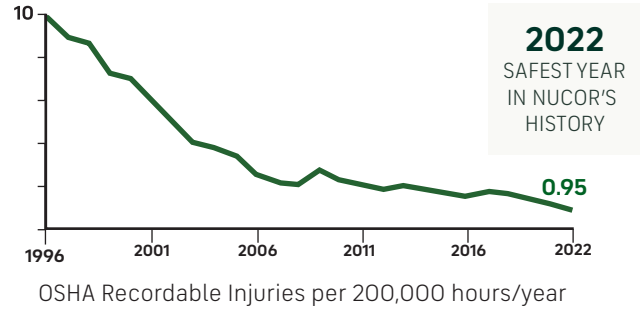
The recycled content of Nucor's steel nationwide



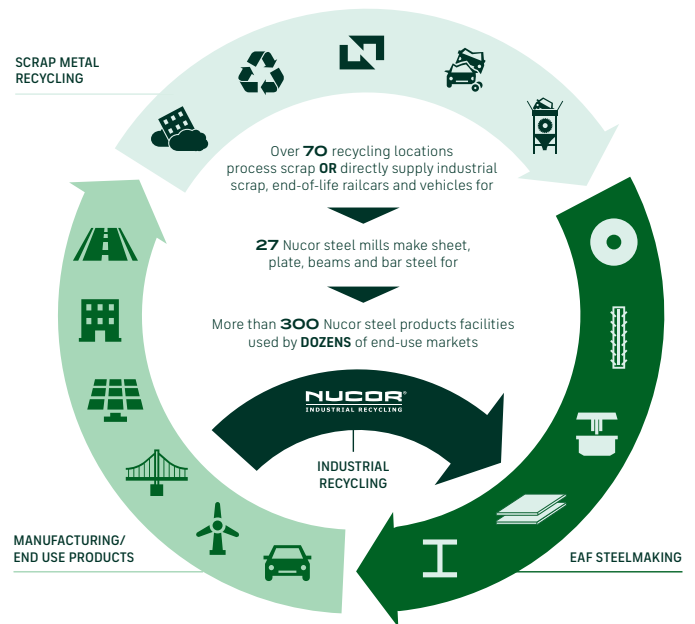
WATER USAGE

Nucor uses **98% LESS** water than an average steel mill

OUR FOCUS: BECOME THE WORLD'S SAFEST STEEL COMPANY



VERTICAL INTEGRATION & PRODUCT LIFECYCLE



COMMITMENT TO EDUCATION

Every Nucor teammate and their dependents are eligible to receive a **\$4,000-per-year** scholarship to college or vocational school. Nationwide, more than **\$115 million** has been awarded to almost **25,000** children since the program's inception in 1974.

*Greenhouse Gas (GHG) emissions: Scope 1 = direct emissions from operations; Scope 2 = indirect emissions from purchased electricity