

**LARGEST STEEL & STEEL PRODUCTS PRODUCER**  
IN THE UNITED STATES

**LARGEST RECYCLER**  
OF ANY TYPE OF MATERIAL IN NORTH AMERICA

NUCOR RECYCLES MORE THAN **20 MILLION TONS** OF FERROUS SCRAP ANNUALLY TO PRODUCE NEW STEEL THAT IS 100% RECYCLABLE

**31,000 TEAMMATES**  
WORKING SAFELY AT OVER 300 OPERATING FACILITIES IN NORTH AMERICA

**FORTUNE**  
THE WORLD'S MOST  
**ADMIRED**  
COMPANIES' **2023**

**RANKED #1 IN OUR INDUSTRY**  
**TWO YEARS IN A ROW**

**FORTUNE**  
BEST WORKPLACES  
IN MANUFACTURING  
AND PRODUCTION' **2023**

**TWO YEARS IN A ROW**



**2,500**  
NUCOR STEEL JOBS IN SOUTH CAROLINA

**\$125,000+**  
MEDIAN PAY FOR ALL NUCOR TEAMMATES NATIONWIDE  
OVER THE LAST 3 YEARS (EXCLUDING EXECUTIVES)

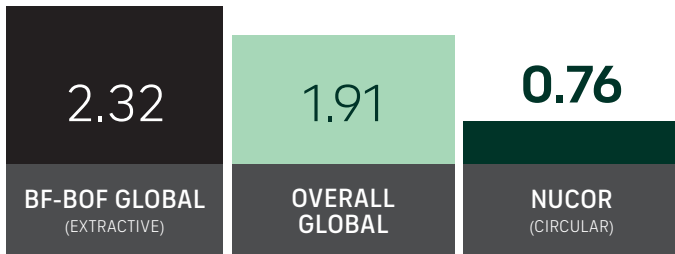
**\$41.5 BILLION**  
NET SALES IN 2022

<b>Z</b> <b>NUCOR</b> NUCOR STEEL - BERKELEY NUCOR STEEL - SOUTH CAROLINA NUCOR COLD FINISH - SOUTH CAROLINA NUCOR BUILDINGS GROUP - SOUTH CAROLINA NUCOR INSULATED PANEL GROUP VULCRAFT - SOUTH CAROLINA NUCOR TOWERS & STRUCTURES	HUGER	STEEL SHEET & BEAM
	DARLINGTON	STEEL BAR
	DARLINGTON	COLD FINISHED BAR
	SWANSEA	METAL BUILDING SYSTEMS
	LAURENS	INSULATED METAL PANELS
	FLORENCE	STEEL JOISTS & DECKING
	ROCK HILL	GROUP HEADQUARTERS
<b>Z</b> <b>NUCOR RAW MATERIALS GROUP</b> FERROUS TRADING	CHARLESTON	SCRAP BROKERAGE
	CATAWBA	REBAR FABRICATION & INSTALLATION
<b>I</b> <b>NUCOR SKYLINE STEEL</b> SKYLINE STEEL HEADQUARTERS	ROCK HILL	CORPORATE HEADQUARTERS
	HUGER	SHEET STEEL PROCESSING
<b>N</b> <b>NUMIT LLC</b> Joint Venture with Mitsui & Co. (U.S.A.) Inc. STEEL TECHNOLOGIES	HUGER	SHEET STEEL PROCESSING

## GLOBAL LEADER IN STEELMAKING SUSTAINABILITY

### STEELMAKING GREENHOUSE GAS EMISSIONS

Average CO<sub>2</sub> emitted for every ton of steel produced  
Scopes 1, 2 & 3\*

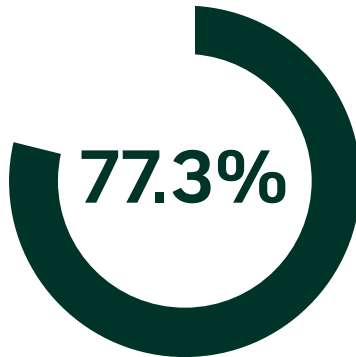


Nucor's GHG intensity is only 1/3 of the average extractive steel producer.

\*Nucor data is for 2022. Global and Integrated averages are from 2021, the most recent data available.

## RECYCLED CONTENT

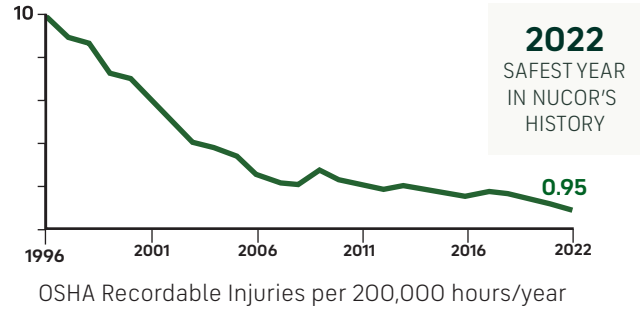
The recycled content of Nucor's steel nationwide



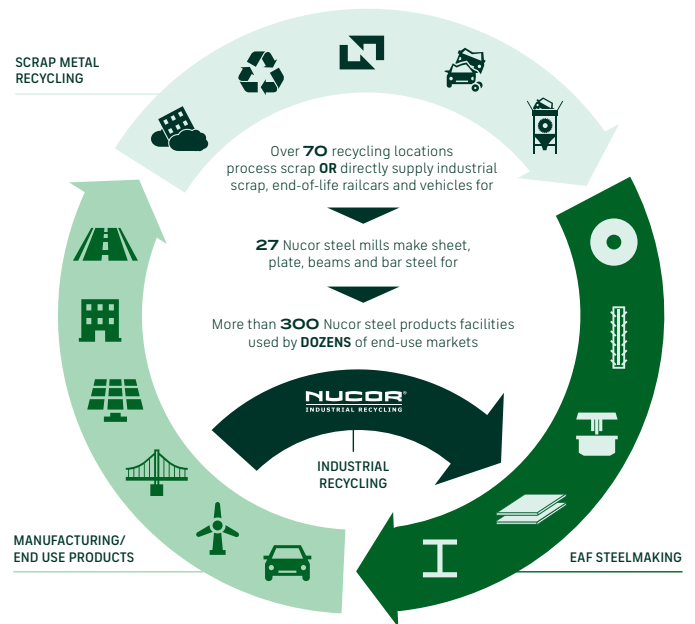
## WATER USAGE

Nucor uses **98% LESS** water than an average steel mill

## OUR FOCUS: BECOME THE WORLD'S SAFEST STEEL COMPANY



## VERTICAL INTEGRATION & PRODUCT LIFECYCLE



## COMMITMENT TO EDUCATION

Every Nucor teammate and their dependents are eligible to receive a **\$4,000-per-year** scholarship to college or vocational school. Nationwide, more than **\$115 million** has been awarded to almost **25,000** children since the program's inception in 1974.

\*Greenhouse Gas (GHG) emissions: Scope 1 = direct emissions from operations; Scope 2 = indirect emissions from purchased electricity