

## LARGEST STEEL & STEEL PRODUCTS PRODUCER

IN THE UNITED STATES

## LARGEST RECYCLER

OF ANY TYPE OF MATERIAL IN NORTH AMERICA

NUCOR RECYCLES MORE THAN **20 MILLION TONS** OF FERROUS SCRAP ANNUALLY TO PRODUCE NEW STEEL THAT IS 100% RECYCLABLE

## 31,000 TEAMMATES

WORKING SAFELY AT OVER 300 OPERATING FACILITIES IN NORTH AMERICA

## FORTUNE

THE WORLD'S MOST ADMIRED COMPANIES' 2023

RANKED #1 IN OUR INDUSTRY TWO YEARS IN A ROW

## FORTUNE

BEST WORKPLACES IN MANUFACTURING AND PRODUCTION' 2023

TWO YEARS IN A ROW



## 500

NUCOR STEEL JOBS IN MISSISSIPPI

## \$100,000+

MEDIAN PAY FOR ALL NUCOR TEAMMATES NATIONWIDE OVER THE LAST 3 YEARS (EXCLUDING EXECUTIVES)

## \$41.5 BILLION

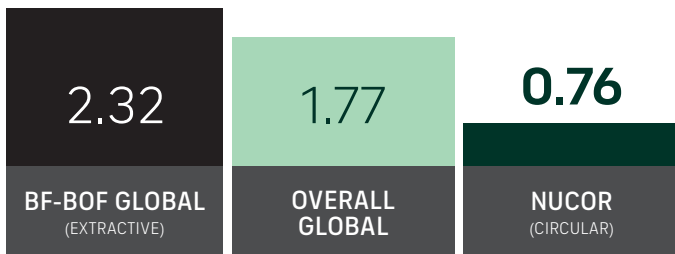
NET SALES IN 2022

	<b>NUCOR</b> NUCOR STEEL JACKSON, INC. GENERAL RECYCLING OF MISSISSIPPI, LLC	FLOWOOD FLOWOOD	BAR STEEL MILL SCRAP METAL RECYCLING
	<b>NUCOR HARRIS REBAR</b> HARRIS REBAR JACKSON LLC.	JACKSON	REBAR FABRICATION & INSTALLATION
	<b>NUCOR SKYLINE STEEL</b> SKYLINE STEEL PIPE	IUKA	STEEL PIPE & LARGE DIAMETER TUBE
	<b>NUMIT LLC</b> Joint Venture STEEL TECHNOLOGIES	MADISON	SHEET STEEL PROCESSING

## GLOBAL LEADER IN STEELMAKING SUSTAINABILITY

### STEELMAKING GREENHOUSE GAS EMISSIONS

Average CO<sub>2</sub> emitted for every ton of steel produced  
Scopes 1, 2 & 3\*

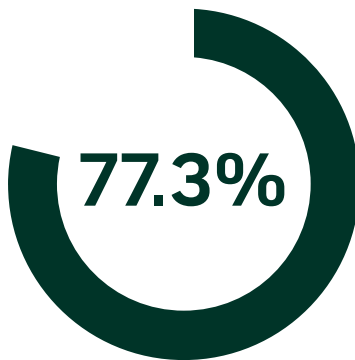


Nucor's GHG intensity is only 1/3 of the average extractive steel producer.

\*Nucor data is for 2022. Global and Integrated averages are from 2021, the most recent data available.

## RECYCLED CONTENT

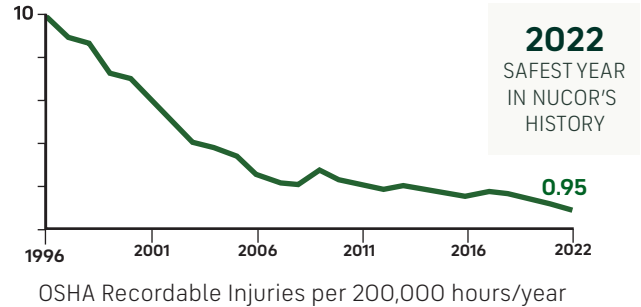
The recycled content of Nucor's steel nationwide



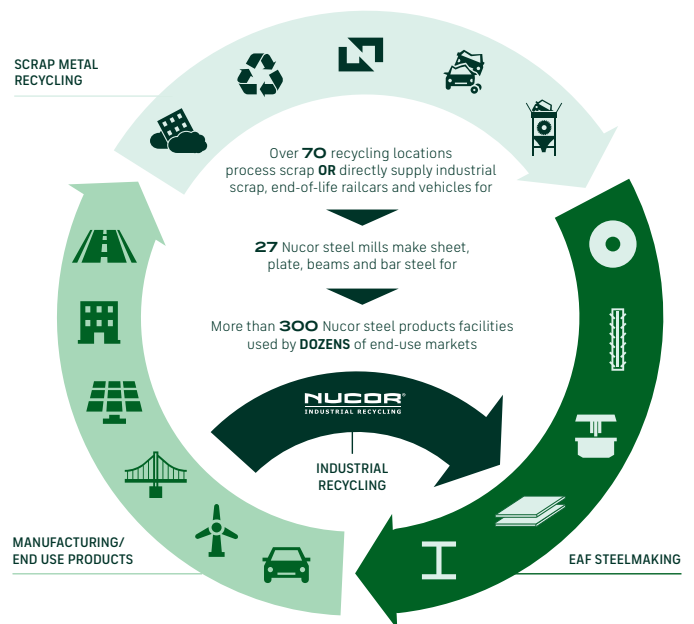
## WATER USAGE

Nucor uses **98% LESS** water than an average steel mill

## OUR FOCUS: BECOME THE WORLD'S SAFEST STEEL COMPANY



## VERTICAL INTEGRATION & PRODUCT LIFECYCLE



## COMMITMENT TO EDUCATION

Every Nucor teammate and their dependents are eligible to receive a **\$4,000-per-year** scholarship to college or vocational school. Nationwide, more than **\$115 million** has been awarded to almost **25,000** children since the program's inception in 1974.

\*Greenhouse Gas (GHG) emissions: Scope 1 = direct emissions from operations; Scope 2 = indirect emissions from purchased electricity