

100

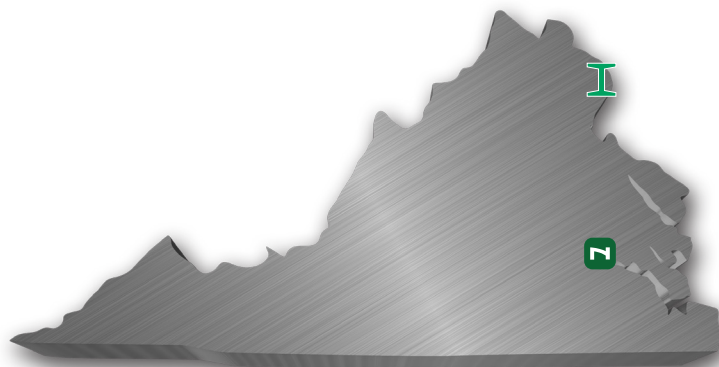
NUCOR STEEL JOBS IN VIRGINIA

\$100,000+

MEDIAN PAY FOR ALL NUCOR TEAMMATES NATIONWIDE
OVER THE LAST 3 YEARS (EXCLUDING EXECUTIVES)

\$36.5 BILLION

NET SALES IN 2021



LARGEST STEEL & STEEL PRODUCTS PRODUCER

IN THE UNITED STATES

LARGEST RECYCLER

OF ANY TYPE OF MATERIAL IN NORTH AMERICA

NUCOR RECYCLED **~23 MILLION TONS**
OF FERROUS SCRAP IN 2021 TO PRODUCE
NEW STEEL THAT IS 100% RECYCLABLE

30,000 TEAMMATES

WORKING SAFELY AT OVER 300 OPERATING
FACILITIES IN NORTH AMERICA

**FORTUNE
BEST**

WORKPLACES IN
MANUFACTURING
AND PRODUCTION™
— **2022** —

FORTUNE

RANKED #1 IN OUR INDUSTRY

THE WORLD'S
MOST ADMIRABLE
COMPANIES®
— **2022** —



NUCOR

METL-SPAN

PRINCE GEORGE

INSULATED METAL PANELS



SKYLINE STEEL

SKYLINE STEEL

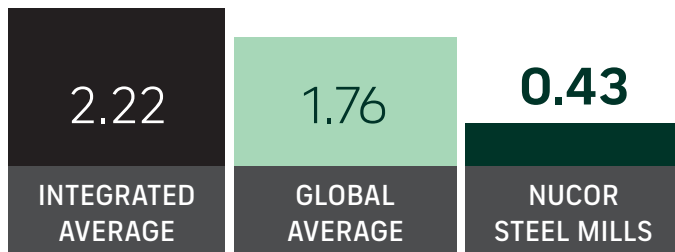
SPRINGFIELD

STEEL PILING SALES

GLOBAL LEADER IN STEELMAKING SUSTAINABILITY

STEELMAKING GREENHOUSE GAS EMISSIONS

Average CO₂ emitted for every ton of steel produced
Scope 1 & Scope 2*



Nucor's GHG Intensity is approx. **ONE-FOURTH** the global average, and **ONE-FIFTH** of the average integrated (BF/BOF) steel producer

*Nucor data is for 2021. Global and Integrated averages are from 2020, the most recent data available.

RECYCLED CONTENT

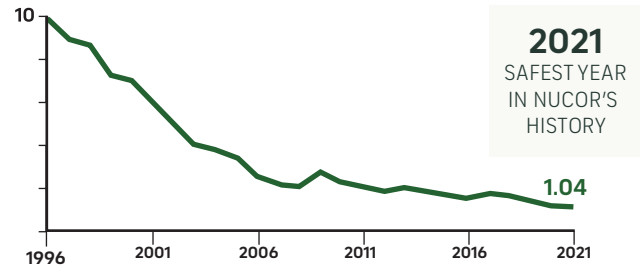
The recycled content of Nucor's steel nationwide



WATER USAGE

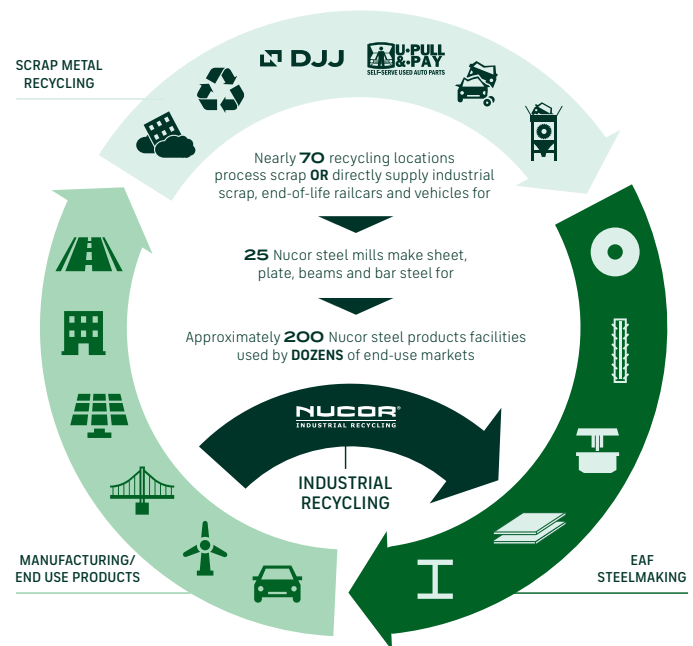
Nucor uses **98% LESS** water than an average steel mill

OUR FOCUS: BECOME THE WORLD'S SAFEST STEEL COMPANY



OSHA Recordable Injuries per 200,000 hours/year

VERTICAL INTEGRATION & PRODUCT LIFECYCLE



COMMITMENT TO EDUCATION

Every Nucor teammate and their dependents are eligible to receive a **\$4,000-per-year** scholarship to college or vocational school. Nationwide, more than **\$115 million** has been awarded to almost **25,000** children since the program's inception in 1974.

*Greenhouse Gas (GHG) emissions: Scope 1 = direct emissions from operations; Scope 2 = indirect emissions from purchased electricity