

LARGEST STEEL & STEEL PRODUCTS PRODUCER

IN THE UNITED STATES

LARGEST RECYCLER

OF ANY TYPE OF MATERIAL IN NORTH AMERICA

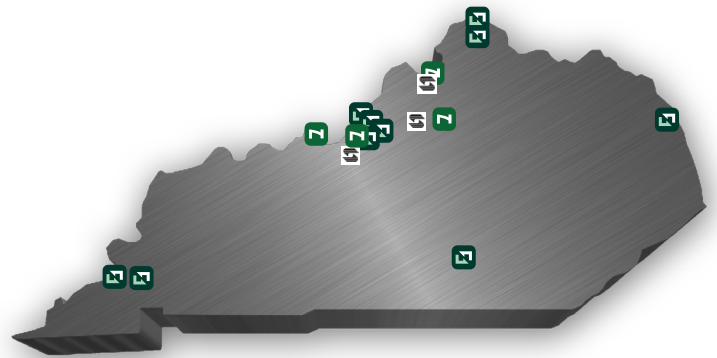
NUCOR RECYCLED **~23 MILLION TONS** OF FERROUS SCRAP IN 2021 TO PRODUCE NEW STEEL THAT IS 100% RECYCLABLE

30,000 TEAMMATES

WORKING SAFELY AT OVER 300 OPERATING FACILITIES IN NORTH AMERICA

**FORTUNE
BEST**
WORKPLACES IN
MANUFACTURING
AND PRODUCTION™
— 2022 —

FORTUNE
RANKED #1 IN OUR INDUSTRY
**THE WORLD'S
MOST ADMIRED
COMPANIES™**
— 2022 —



1,600

NUCOR STEEL JOBS IN KENTUCKY

\$100,000+

MEDIAN PAY FOR ALL NUCOR TEAMMATES NATIONWIDE OVER THE LAST 3 YEARS (EXCLUDING EXECUTIVES)

\$36.5 BILLION

NET SALES IN 2021



NUCOR

NUCOR STEEL GALLATIN LLC
NUCOR STEEL BRANDENBURG (2022)
NUCOR TUBULAR PRODUCTS - CONDUIT
NUCOR TUBULAR PRODUCTS - GALLATIN (2023)

CENTRIA

GHENT
BRANDENBURG
LOUISVILLE
GHENT

FRANKFORT

SHEET STEEL MILL
PLATE STEEL MILL
STEEL ELECTRICAL CONDUIT
HSS, MECHANICAL & GALVANIZED
SOLAR TORQUE TUBING
INSULATED METAL PANELS



DAVID J. JOSEPH COMPANY

RIVER METALS RECYCLING

RAIL EQUIPMENT GROUP
METALS BROKERAGE
U-PULL-&-PAY

FORT MITCHELL
LOUISVILLE (3 LOCATIONS)
ASHLAND
CALVERT CITY
NEWPORT
OWENSBORO
PADUCAH
SOMERSET
LOUISVILLE

HEADQUARTERS
SCRAP METAL RECYCLING
RAILCAR DISMANTLING
METALS TRADING OFFICE
SELF-SERVE AUTO PARTS



NUMIT LLC Joint Venture with Mitsui & Co. (U.S.A.) Inc.
STEEL TECHNOLOGIES

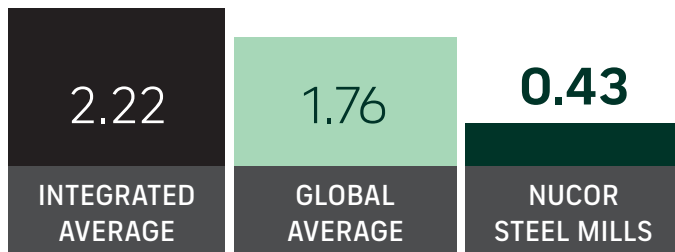
LOUISVILLE
EMINENCE
GHENT

HEADQUARTERS
STEEL SHEET PROCESSING

GLOBAL LEADER IN STEELMAKING SUSTAINABILITY

STEELMAKING GREENHOUSE GAS EMISSIONS

Average CO₂ emitted for every ton of steel produced
Scope 1 & Scope 2*



Nucor's GHG Intensity is approx. **ONE-FOURTH** the global average, and **ONE-FIFTH** of the average integrated (BF/BOF) steel producer

*Nucor data is for 2021. Global and Integrated averages are from 2020, the most recent data available.

RECYCLED CONTENT

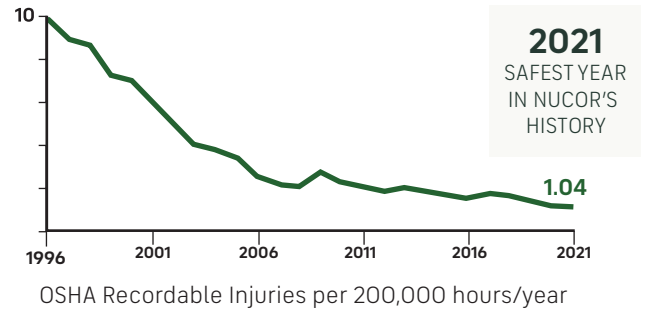
The recycled content of Nucor's steel nationwide



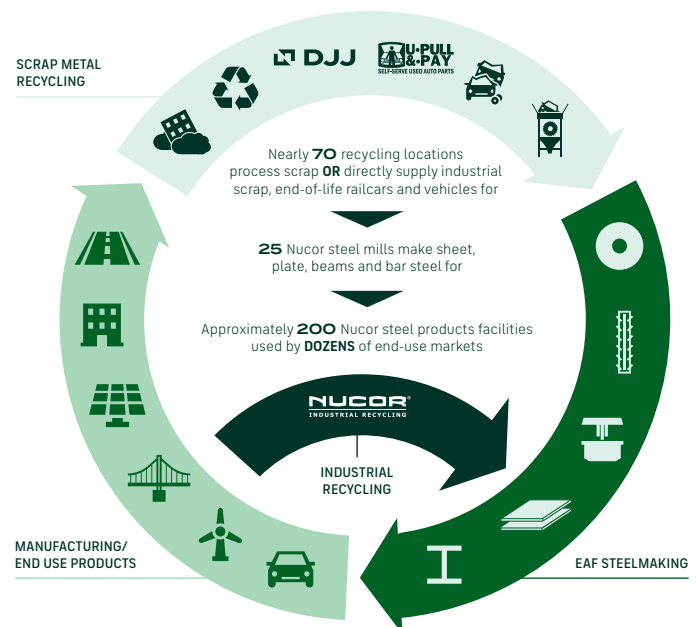
WATER USAGE

Nucor uses **98% LESS** water than an average steel mill

OUR FOCUS: BECOME THE WORLD'S SAFEST STEEL COMPANY



VERTICAL INTEGRATION & PRODUCT LIFECYCLE



COMMITMENT TO EDUCATION

Every Nucor teammate and their dependents are eligible to receive a **\$4,000-per-year** scholarship to college or vocational school. Nationwide, more than **\$115 million** has been awarded to almost **25,000** children since the program's inception in 1974.

*Greenhouse Gas (GHG) emissions: Scope 1 = direct emissions from operations; Scope 2 = indirect emissions from purchased electricity