

**LARGEST STEEL & STEEL  
PRODUCTS PRODUCER**  
IN THE UNITED STATES

**LARGEST RECYCLER**  
OF ANY TYPE OF MATERIAL IN NORTH AMERICA

NUCOR RECYCLES MORE THAN **20 MILLION TONS**  
OF FERROUS SCRAP ANNUALLY TO PRODUCE  
NEW STEEL THAT IS 100% RECYCLABLE

**31,000 TEAMMATES**  
WORKING SAFELY AT OVER 300 OPERATING  
FACILITIES IN NORTH AMERICA

**FORTUNE**  
THE WORLD'S MOST  
**ADMIRED**  
COMPANIES' **2023**

RANKED #1 IN OUR INDUSTRY  
TWO YEARS IN A ROW

**FORTUNE**  
BEST WORKPLACES  
IN MANUFACTURING  
AND PRODUCTION' **2023**

TWO YEARS IN A ROW



**400**  
NUCOR STEEL JOBS IN ARIZONA

**\$125,000+**  
MEDIAN PAY FOR ALL NUCOR TEAMMATES NATIONWIDE  
OVER THE LAST 3 YEARS (EXCLUDING EXECUTIVES)

**\$41.5 BILLION**  
NET SALES IN 2022



## NUCOR

NUCOR STEEL KINGMAN, LLC  
VERCO DECKING, INC.  
ELITE STORAGE SOLUTIONS

KINGMAN  
PHOENIX  
CHANDLER

STEEL BAR  
STEEL FLOOR & ROOF DECK  
RACKING



## NUCOR HARRIS REBAR

CONSOLIDATED REBAR INC.  
HARRIS/ARIZONA REBAR INC.

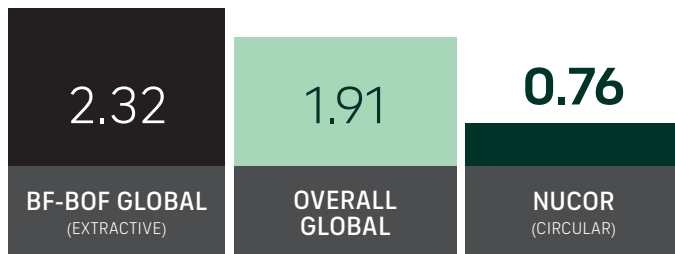
TUCSON  
KINGMAN  
PHOENIX

REBAR FABRICATION & INSTALLATION

## GLOBAL LEADER IN STEELMAKING SUSTAINABILITY

### STEELMAKING GREENHOUSE GAS EMISSIONS

Average CO<sub>2</sub> emitted for every ton of steel produced  
Scopes 1, 2 & 3\*

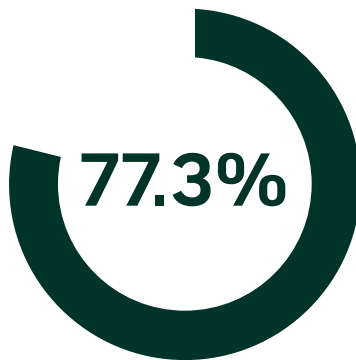


Nucor's GHG intensity is only 1/3 of the average extractive steel producer.

\*Nucor data is for 2022. Global and Integrated averages are from 2021, the most recent data available.

## RECYCLED CONTENT

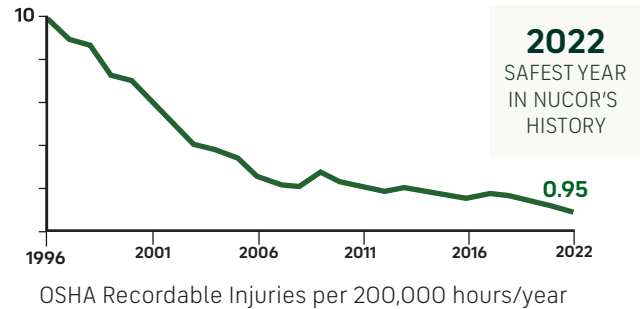
The recycled content of Nucor's steel nationwide



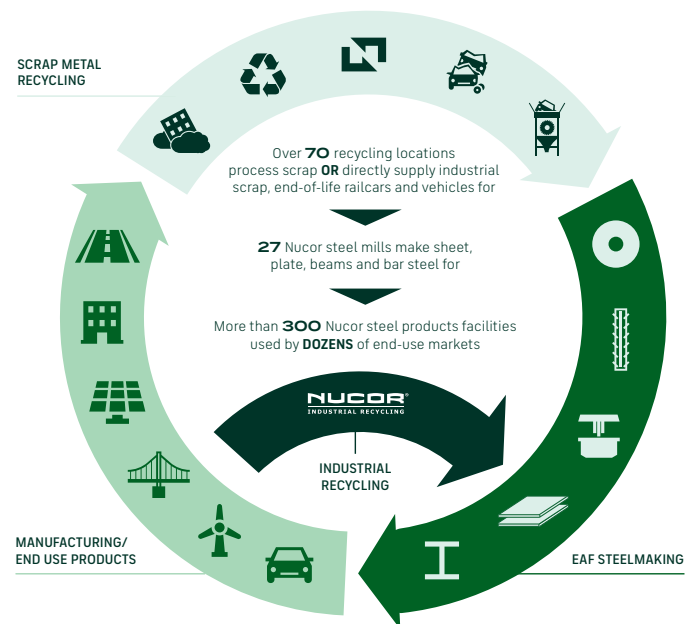
## WATER USAGE

Nucor uses **98% LESS** water than an average steel mill

## OUR FOCUS: BECOME THE WORLD'S SAFEST STEEL COMPANY



## VERTICAL INTEGRATION & PRODUCT LIFECYCLE



## COMMITMENT TO EDUCATION

Every Nucor teammate and their dependents are eligible to receive a **\$4,000-per-year** scholarship to college or vocational school. Nationwide, more than **\$115 million** has been awarded to almost **25,000** children since the program's inception in 1974.

\*Greenhouse Gas (GHG) emissions: Scope 1 = direct emissions from operations; Scope 2 = indirect emissions from purchased electricity