

Camberwall
COURTS
ABIJO



DEVELOPED BY



C A M B E R W A L L C O U R T S A B I J O





INTRODUCING CAMBERWALL COURTS

Camberwall Courts, Abijo is an Urban apartment development designed to reflect the magical merge of form and function in its architecture. Its design caters to modern living for residents of the apartments. Located in the heart of Abijo GRA along the Lekki-Epe Expressway, the estate is a masterpiece.

It features a splendid layout, visitors park, smart card access, renewable energy and surveillance.





ABOUT CAMBERWALL ABIJO

MODERN LIVING

Stylish and functional, the space around reflects our design thinking approach to ensure access, security and serenity of the environment.

Charming smart spaces focusing on the smallest details to ensure timeless beauty and ultimate comfort in your future home. Here, you'll live life the easy way.

A SAFE COMMUNITY

We are committed to building a safe community and in doing so, we continue building our rich family culture that's every bit as passionate, inspiring and vibrant as the smart communities we create and serve.





OUR GOALS

DRIVING INNOVATION

Veritasi Homes is driving innovation to ensure the most value is given. We do this by preferring innovative solutions to problems such as security, electricity and property maintenance for our esteemed customers.

SUSTAINABLE COMMUNITIES

We have sustainability as one of our core tenets. This is deeply ingrained in our thought process and new product development hence the communities we build are smart and sustainable to improve the lives of residents and preserve our environment.



WHY CAMBERWALL COURTS ABIJO?

RENTAL INCOME

What better way to earn income hassle-free?
Veritasi Homes' facility management arm will manage the apartments on behalf of clients and collect rents from tenants in a timely manner. This option will enable you earn conveniently from the apartment bought.

MORTGAGE

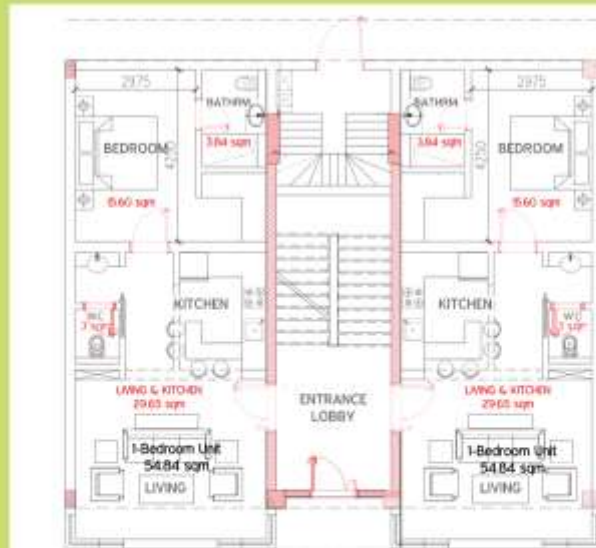
Veritasi Homes will also provide access to mortgage facilities to enable you own a home. The mortgage accessed at a single digit interest rate is available up to 30 years. With equity contribution ranging from 10-30%, you can spread the balance as you please.

BUY BACK

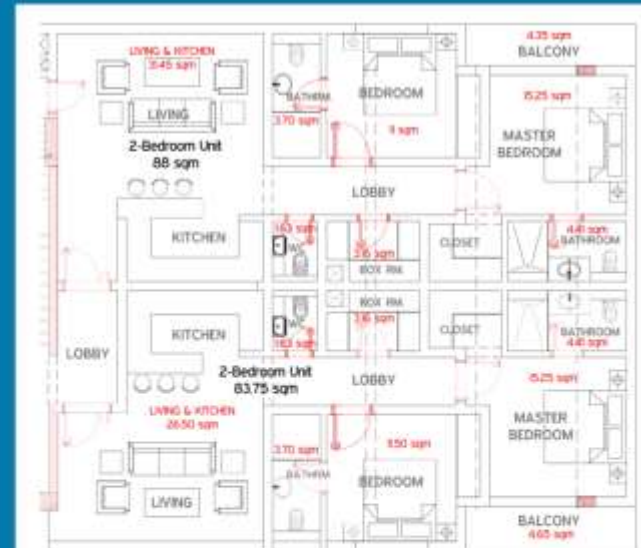
For clients that buy the Apartment + Land package, in the occasion that you want to sell your land after 2 years, we can initiate the buyback clause in the agreement to aid quick liquidity at a rate ranging from 10-20% increase of the purchase price. (Terms and conditions apply).

BUILDING PLAN

1 BEDROOM APARTMENT



2 BEDROOM APARTMENT





PROJECT DESIGN

E X T E R I O R

CENTRAL VIEW



STREET VIEW





FLOOR
VIEW

AERIAL VIEW





PROJECT DESIGN

INTERIOR





SPECIFICATIONS

AMENITIES

- Designated parking allocated space for each apartment.
- Well landscaped green area and gardens
- Gazebo area to meet visitors
- Solar powered street light

UTILITY

Washer/dryer unit water supply and drain provisions available.

BATHROOMS

- Walking shower with stainless steel wall mounted shower head and frameless clear shower glass enclosure.
- Polish stainless-steel mixer, wall mounted shower head and complete hand shower set to shower areas of bathrooms.
- White wall hung basin with polished stainless-steel faucets.
- Light-integrated mirrors above hand basin and shaver's socket.
- Concealed cistern WCs with soft close seat in Bathrooms.
- Shelved niche to shower area where indicated.
- Polished stainless-steel finish for bathroom accessories.
- Porcelain floor and wall tiles.
- Recessed LED ceiling spotlights.

KITCHENS

- Granite stone work surfaces with glazed ceramic tiles for wall back splash
- Stainless steel single/double bowl top mounted sink and stainless-steel faucets.
- Satin/Gloss finishes to fully-fitting cabinet design.
- Recessed LED ceiling spotlights and track lights.

INTERIOR FINISHES

- Feature-engineered veneer security entrance door
- Engineered veneer internal timber doors with architraves.
- Factory-cut ceramic tile skirtings.
- Polished chrome handles on all doors.
- Fully-fitted wardrobes in bedrooms rails, shelves & drawers.
- Fully vitrified ceramic floor tile finishes to hallways, bedrooms and living spaces (including kitchens).
- Top grade paint quality on water-resistant P.O.P wall screeding.

SPECIFICATIONS

ELECTRICAL FITTINGS

- **Recessed LED ceiling spotlights.**
- **Inclusion of energy-saving track lights in kitchen areas**
- **Television (cable) points to living areas and all bedrooms.**
- **Telephone and data points to living areas and all bedrooms.**
- **High grade light switches and sockets.**

BALCONIES / TERRACES

- **Toughened glass railings in all balconies/terraces**
- **Non-slip ceramic floor tile finish to terraces with external lighting where indicated.**

SECURITY

- **Fob access control system at main lobby entrance.**
- **Power and telephone points provided to all apartments.**
- **Entrance security doors with multi-point lock and spy hole features for all apartments.**
- **Buzzer to all apartments.**
- **24-hours concierge service and monitored CCTV at the entrance gate house.**

INTERIOR DESIGN CONCEPT FOR ENTRANCE LOBBY

- **Feature floor and wall finishes.**
- **Mood lighting.**
- **Planters in outdoor spaces.**
- **Audio entry system by individual apartment handset.**

GENERAL

- **A dedicated domestically treated water system, serving pressurized hot and cold water.**
- **Fire detection and alarm system**
- **Installation of fiber optic cable within the development.**

PRICE

FINISHED

SPECIFICATION:

PRICE:

1 BEDROOM APARTMENT	- N11 MILLION
2 BEDROOM APARTMENT	- N15 MILLION
3 BEDROOM APARTMENT	- N20 MILLION
2 BEDROOM PENTHOUSE	- N20 MILLION

SEMI FINISHED

SPECIFICATION:

PRICE:

1 BEDROOM APARTMENT	- N10 MILLION
2 BEDROOM APARTMENT	- N13.5 MILLION
3 BEDROOM APARTMENT	- N18 MILLION
2 BEDROOM PENTHOUSE	- N18 MILLION

MOST SOUGHT-AFTER PLACES AROUND ABIJO GRA, LEKKI
TIME AND DISTANCE (Journey by car) AWAY FROM THE ESTATE LOCATION.

From Camberwall, Abijo GRA

- **Corona international school-5mins (1.8km)**
- **Greensprings School- 17mins (6km)**
- **Caleb British International sch.- 8mins (2.9km)**
- **Eleko Beach- 56min (29.1km)**
- **Pentagon SkyTeam filling station- 9mins (2.9km)**
- **Coscharis group- 17mins (6.4km)**
- **Leophine Restaurant and Bar- 10mins (3.8km)**
- **Lekki medical center 34mins- (20.7km)**
- **Lagos Business School- 21mins (10.8km)**
- **Lufasi Nature Park- 12mins (4.7km)**
- **Prime Lounge- 12mins (5.2km)**

- **Novare mall (Shoprite)- 15mins (7km)**
- **Kayron International School- 18mins (7.6km)**
- **Omu Resort- 41mins (15.2km)**
- **Beto Mall- 13mins (4.2km)**
- **Mayfair Garden and complex- 35mins (15.9km)**
- **First bank- 31mins (15.1km)**
- **Lakowe Lakes and Golf course- 33mins (13km)**
- **Access bank ATM Gallery- 4mins (1.1km)**
- **Rainoil- 4mins (1.1km)**
- **Circle Mall- 45mins (23.5km)**
- **Doren Specialist Hospital- 36mins (14.8km)**
- **Reddington international sch. -22mins (10km)**
- **Wema Bank- 21mins (9.7km)**
- **Jonaith Hotel & Suite- 32mins (16.2km)**

OTHER PURCHASE OPTIONS

APARTMENT + LAND

This option gives you the opportunity to own an apartment you can earn rental income from and also land ownership as an investment. The land acquired can be built on or sold in the future to Veritasi homes or a new buyer.

Finished (Apartment + Land)	Price
1 bedroom + 300sqm	N17 million
2 bedroom + 300sqm	N21 million
3 bedroom + 300sqm	N26 million
Penthouse, 2Br + 300sqm	N26 million

Land	Price
300 sqm	N6.5 million
600 sqm	N11.5 million

Semi finished (Apartment + Land)	Price
1 bedroom + 300sqm	N16 million
2 bedroom + 300sqm	N19.5 million
3 bedroom + 300sqm	N24 million
Penthouse, 2Br + 300sqm	N24 million





This brochure is meant only for promotional purposes and has no legal value. The plans, specifications, images and other details herein are only indicative and subject to the approval of the concerned authorities.



DEVELOPER OF
C AMBERWALL COURTS, ABIJO

OTHER PROJECTS:

THE CLARIDGE I, SANGOTEDO | CAMBERWALL ESTATE, ABIJO | THE CLARIDGE II, IBEJU LEKKI

For More Information on This Property;
Contact Us

+234 8101536132
www.ownahome.ng