



EXPECT EXCEPTIONAL

UP AND AWAY FROM THE ORDINARY,
AT FAIRFIELD APARTMENTS, ABIJO, LEKKI.

FOR MORE INFO: +234 08101536132

www.ownahome.ng



NOTHING IS IMPOSSIBLE

Now, owning a Lakeview Apartment in the heart of the city of Lekki is completely possible - become part of the lucrative Middlechase Property market to take advantage of attractive rental returns and capital appreciation, with readily available financial options and relatively low cost of real estate ownership. All these benefits means such a valuable investment is easily attainable as well as a highly liquid asset.

HEALTH IS HAPPINESS

**Start the day with an invigorating
swim in the temperature-controlled pool or banish the bustle of the
working week with a refreshing drink at our pool side counter.**



THE INCREDIBLE LOCATION

Fairfield Apartments offers the ultimate lifestyle, with every contemporary amenities and landmarks just around the corner. Here you're a stone's throw from seemingly impossible feats of architecture, a place where dreams really do come true.



**Lekki-Epe
Expressway
2 Minutes**



**Novare Mall
7 Minutes**



**Lagos
Business School
15 Minutes**



**Lakowe Lakes
& Golf
26 Minutes**



**Proposed Lekki
International Airport
40 Minutes**



**Dangote
Refinery
55 Minutes**





WARM AND WELCOMING

HOME IS
WHERE YOUR
HEART IS

The elegantly styled living apartments, dining and kitchen area and refined ambience of Fairfield Apartment deftly set the scene for the experience that awaits you. Come home to your Lakeview Apartment with tastefully appointed interiors, fitted kitchen, functional bathroom and more. This is your happy place.

WHERE ANYTHING IS POSSIBLE

Now you can have it all- at once- in one place. You can live in the heart of the city amidst everything that's going on; with a luxurious lifestyle and high -end amenities. Meanwhile, the city's biggest and best attractions are all close by, day and night, for action and relaxation alike.





STYLISH APARTMENT DESIGN FOR MODERN LIVING

Fairfield Apartments offers vibrant, connected living in multi-family apartment, each featuring 128 well designed, stylish apartments. Every apartment is fitted with premium home appliances and has been designed to make optimal use of space.

The only multi-family apartments in the area, Fairfield Apartments features modern residences with private balconies that offer a choice of outstanding views of the area overlooking the lake, swimming pool, recreation building and the landscape beyond.

APARTMENT TYPE

UNITS/ BLOCK

1 Bedroom Apartment

26 Units

2 Bedroom Apartment

68 Units

2 Bedroom Penthouse

4 Units

3 Bedroom Apartment

24 Units

3 Bedroom Penthouse

2 Units

3 Bedroom Maisonette

4 Units

4 Bedroom Maisonette

2 Units

Everyday Cash Flow | 11

LUXURY LAKESIDE LIVING **APARTMENTS**



1 BEDROOM APARTMENT

TYPICAL FLOOR PLAN

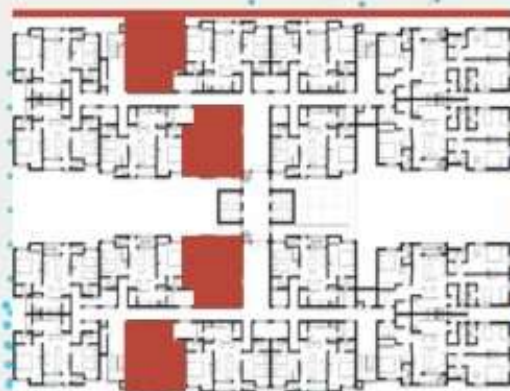


Own A **1 Bedroom Apartment** At Fairfield Apartments, Abijo Ajah, Lagos, With A Down Payment As Low As

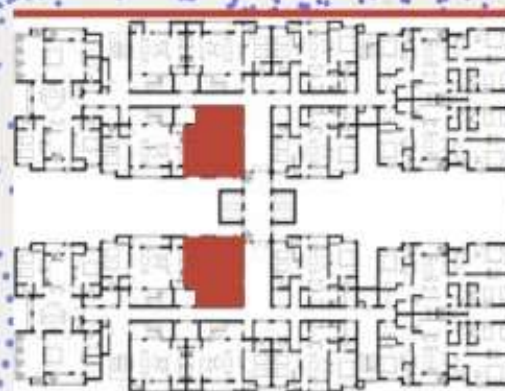
N1M

PAYMENT PLAN	DOWN PAYMENT	MONTHLY PAYMENT
5 YEARS	N1.8M	N132,000
10 YEARS	N1M	N90,750

Floor Plan 1st To 5th Floor



Floor Plan 6th Floor



Floor Plan 7th Floor





1 Bedroom Apartment

Space	Area	Size (Ft.)
Living	17M ²	10' X 15'
Room	7M ²	7' X 11'
Kitchen	2M ²	3' X 6'
Kitchen-O	2M ²	3' X 6'
ut Pantry	15.3 M ²	10' X 13'
Master Bedroom		

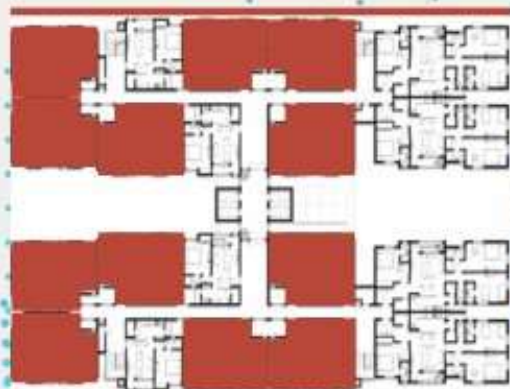
2 BEDROOM APARTMENT TYPICAL FLOOR PLAN



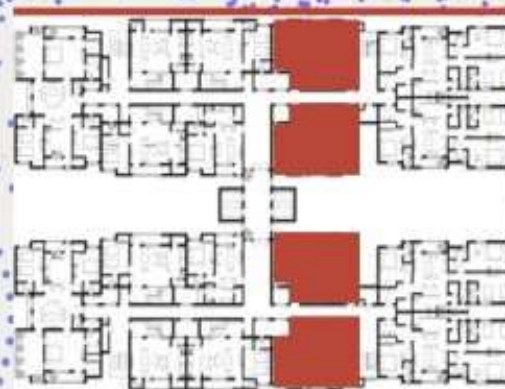
Own A **2 Bedroom Apartment** At **Fairfield Apartments, Abijo**
Ajah, With A Down Payment As Low As **₦1.8M**

PAYMENT PLAN	DOWN PAYMENT	MONTHLY PAYMENT
5 YEARS	₦2.5M	₦220,000
10 YEARS	₦1.8M	₦132,000

Floor Plan 1st To 5th Floor



Floor Plan 6th Floor



Floor Plan 7th Floor





2 Bedroom Apartment

Space	Area	Size (Ft.)
Living	17M ²	10' X 15'
Room	7M ²	7' X 11'
Kitchen	2M ²	3' x 6'
Kitchen	2M ²	3' X 6'
Out	15.3 M ²	10' X 13'
Pantry		
Master Bedroom	1.4M ²	3' X 4'
Visitor Toilet		

2 BEDROOM PENTHOUSE

TYPICAL FLOOR PLAN

Outright
Payment
₦12.5M



Own A **2 Bedroom Penthouse** At **Fairfield Apartments, Abijo**
Ajah, Lagos, With A Down Payment As Low As **₦3.5M**

**PAYMENT
PLAN**

**DOWN
PAYMENT**

**MONTHLY
PAYMENT**

3 MONTHS

~~₦3.5M~~

~~₦3M~~

6 MONTHS

~~₦3.5M~~

~~₦1.5M~~

Floor Plan 1st To 5th Floor



Floor Plan 6th Floor



Floor Plan 7th Floor



2 Bedroom Penthouses

Space	Area	Size (Ft.)
Living	22M ²	19' X 13'
Room	7M ²	7' X 11'
Kitchen	2M ²	3' x 6'
Kitchen-O	2M ²	4' X 4'
ut Pantry	17.4M ²	14' X 12'
Master Bedroom		
	4.1M ²	6' X 7'
Master Toilet		
	15.2M ²	24' x 7'
Terrace		
	2M ²	4' X 6'
Box Room		



3 BEDROOM APARTMENT

TYPICAL FLOOR PLAN

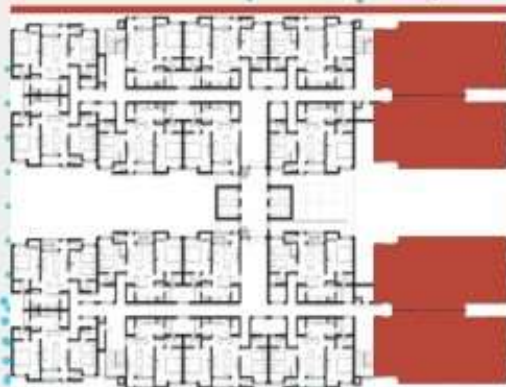
Outright
Payment
₦12M



Own A **3 Bedroom Apartment** At **Fairfield Apartments, Abijo**
Ajah, Lagos, With A Down Payment As Low As **N2M**

PAYMENT PLAN	DOWN PAYMENT	MONTHLY PAYMENT
5 YEARS	₦3M	₦275,000
10 YEARS	₦2M	₦154,000

Floor Plan 1st To 5th Floor



Floor Plan 6th Floor



Floor Plan 7th Floor



3 Bedroom Apartments

Space	Area	Size (Ft.)
Living Room	19M ²	13' X 15'
Visitor Toilet	2M ²	3' X 8'
Terrace	4M ²	3' X 13'
Kitchen	9M ²	6' X 13'
Pantry	1.4M ²	4' X 4'
Kitchen - Out	2M ²	3' X 7'
Bedroom 2 Ensuite	16.3M ²	13' X 13'
Bedroom 3 Ensuite	16.3M ²	11' X 12'
Master Bedroom	16 M ²	11' X 16'
Master Toilet	3M ²	4' X 7'
Walk-In-Closet	3M ²	4' X 7'
Ante Room	6M ²	4' X 11'
Box Room	2.4M ²	4' X 6'

3 BEDROOM-PENTHOUSE

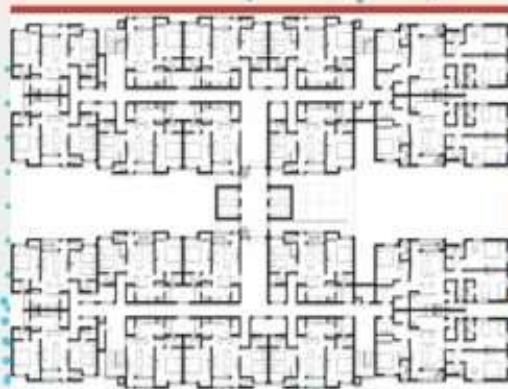
TYPICAL FLOOR PLAN



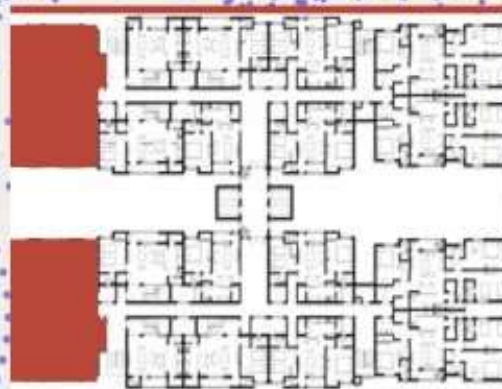
Own A **3 Bedroom Penthouse** At **Fairfield Apartments, Abijo**
Ajah, Lagos, With A Down Payment As Low As **₦4M**

PAYMENT PLAN	DOWN PAYMENT	MONTHLY PAYMENT
3 MONTHS	₦6M	₦3M
6 MONTHS	₦4M	₦1.834M

Floor Plan 1st To 5th Floor



Floor Plan 6th Floor



Floor Plan 7th Floor





3 Bedroom Penthouses

Space	Area	Size (Ft.)
Living Room	24M ²	13' X 15'
Terrace	17M ²	11' X 17'
Bedroom 2 Ensuite	15.3M ²	10' X 13'
Master Toilet	4.5M ²	5' X 9'
Master Terrace	5M ²	3 X 15
Kitchen	12M ²	10' X 11'

3 BEDROOM MAISONETTE

TYPICAL FLOOR PLAN

TYPE 1 - UPPER LEVEL



Outright
Payment

₦16M

TYPE 1 - ENTRY LEVEL



Own A **3 Bedroom Maisonette** At **Fairfield Apartments, Abijo**
Ajah, Lagos, With A Down Payment As Low As

₦4M

**PAYMENT
PLAN**

**DOWN
PAYMENT**

**MONTHLY
PAYMENT**

3 MONTHS

~~₦4M~~

~~₦4M~~

6 MONTHS

~~₦4M~~

~~₦2M~~

Floor Plan 6th Floor



Floor Plan 7th Floor





3 Bedroom Maisonettes

Space	Area	Size (Ft.)
Ante Room	3.5 ²	6' x 6'
Visitor Toilet	2M ²	3' X 7'
Pantry	2M ²	3' X 6'
Bedroom 3 Ensuite	15M ²	10' X 15'
Family Lounge	14.3M ²	15' X 10'
Balcony	3.4M ²	3' X 10'

3 BEDROOM MAISONETTE

TYPICAL FLOOR PLAN

TYPE 2 - UPPER LEVEL



Outright
Payment

₦16M

TYPE 2- ENTRY LEVEL



Own A **3 Bedroom Maisonette** At **Fairfield Apartments, Abijo**
Ajah, Lagos, With A Down Payment As Low As **₦4M**

**PAYMENT
PLAN**

**DOWN
PAYMENT**

**MONTHLY
PAYMENT**

3 MONTHS

~~₦4M~~

~~₦4M~~

6 MONTHS

~~₦4M~~

~~₦2M~~

Floor Plan 6th Floor



Floor Plan 7th Floor





3 Bedroom Maisonettes

Space	Area	Size (Ft.)
Ante Room	3.5 ²	6' x 6'
Visitor Toilet	2M ²	3' X 7'
Pantry	2M ²	3' X 6'
Bedroom 3 Ensuite	18M ²	10' X 15'
Master Toilet	4M ²	6' X 7'
Box Room	2.8	5' X 6'

4 BEDROOM MAISONETTE

TYPICAL FLOOR PLAN

UPPER LEVEL



Outright
Payment
₦19.5M

ENTRY LEVEL



Own A **4 Bedroom Maisonette** At Fairfield Apartments,
Abijo Ajah, Lagos, With A Down Payment As Low As

₦6M

**PAYMENT
PLAN**

PAYMENT

**MONTHLY
PAYMENT**

₦

3 MONTHS

₦6M

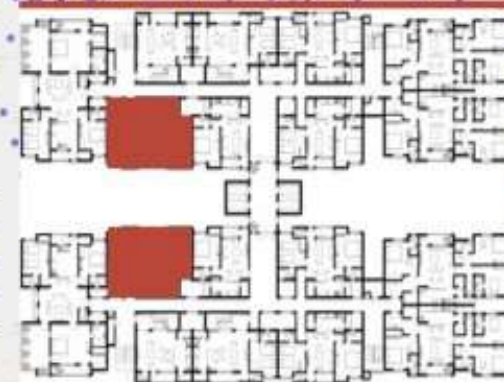
₦4.5M

6 MONTHS

₦6M

₦2.25M

Floor Plan 6th Floor



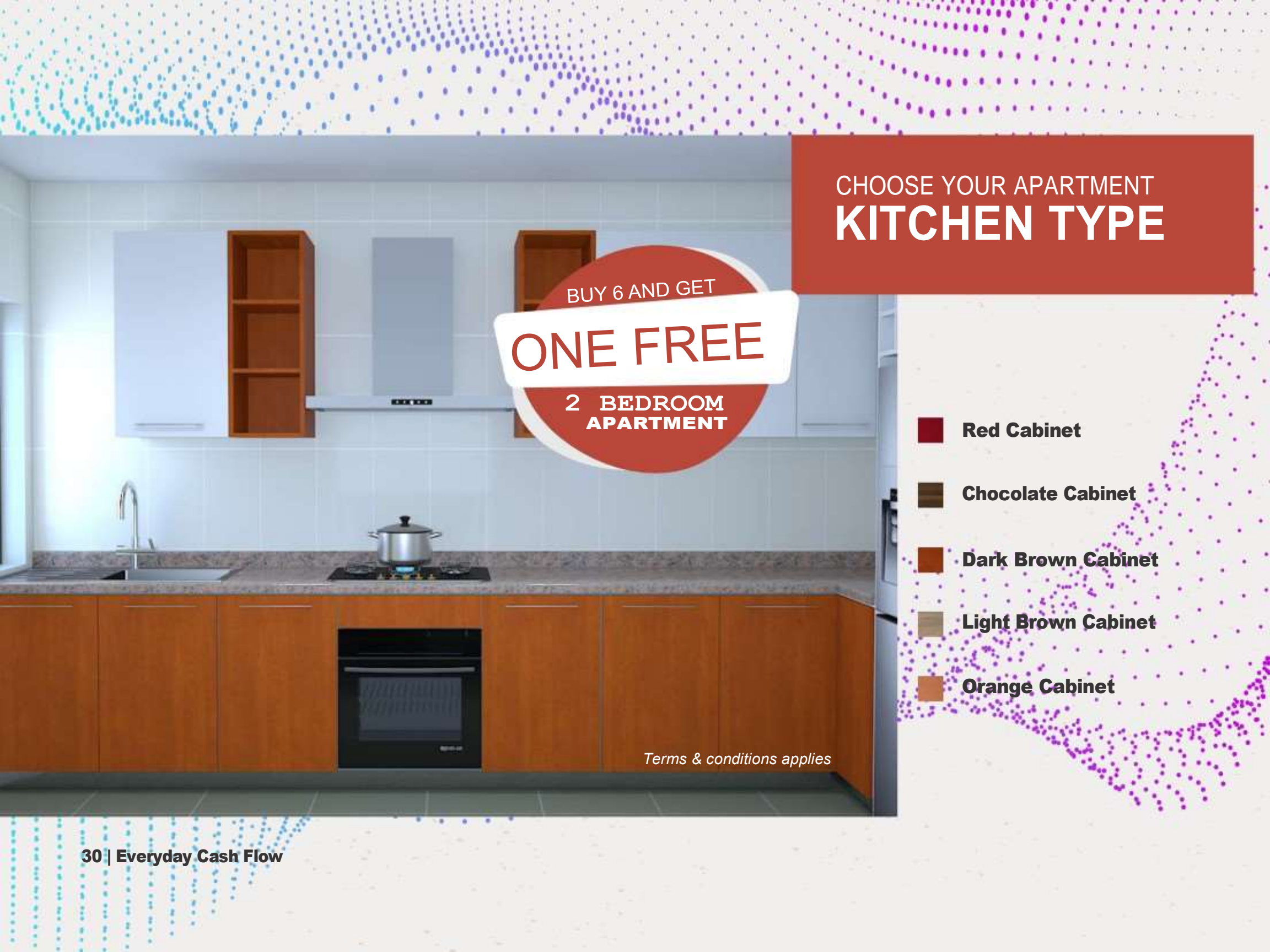
Floor Plan 7th Floor





4 Bedroom Maisonettes

Space	Area	Size (Ft.)
Ante Room	3.5 ²	6' x 6'
Living Room	22M ²	15' X 15'
Visitor Toilet	2M ²	3' X 6'
Terrace	3.4M ²	3' X 10'
Pantry	2M ²	3' X 6'
Bedroom 2 Ensuite	17M ²	10' X 13'
Bedroom 3 Ensuite	18.2M ²	10' X 14'
Bedroom 4 Ensuite	18M ²	10' X 15'
Master Bedroom	17.4M ²	14' X 13'
Family Lounge	14.3M ²	15' X 10'
Box Room	2.8M ²	5' X 6'
Balcony	3.4M ²	3' X 10'



CHOOSE YOUR APARTMENT KITCHEN TYPE

BUY 6 AND GET
ONE FREE

**2 BEDROOM
APARTMENT**



Red Cabinet



Chocolate Cabinet



Dark Brown Cabinet



Light Brown Cabinet



Orange Cabinet

Terms & conditions applies



A UNIQUE DESTINATION WITH CONNECTIVITY AT ITS HEART

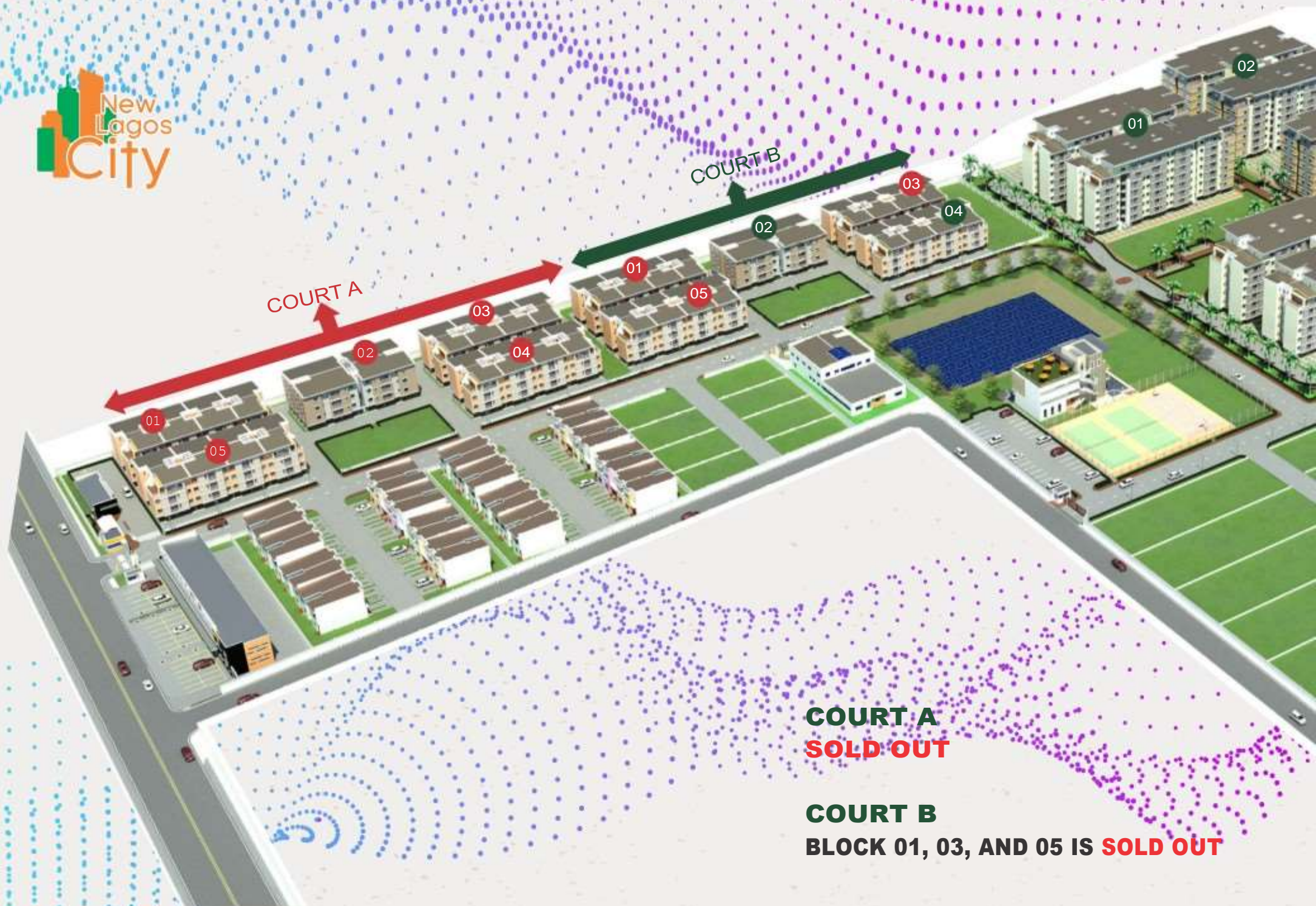
Conveniently located, few minutes' drive from the Lekki-Epe Expressway and less than a minute drive off the proposed Regional Road, residents can enjoy easy accessibility to the proposed Lekki International Airport, as well as top leisure and tourist attractions via Lekki-Epe Expressway. The proximity to Lagos Lagoon to connect to a jetty which is less than a 4

minutes' drive makes the estate location accessible to any part of Lagos within 20 Minutes which is a collaboration with private water transport company in partnership with LASWA. Locations like Falomo-Ikoyi, Ikorodu, Epe, CMS, Ogudu, Apapa are all within reach via safe ferry transport which will provide excellent connectivity to the rest of the city for the residents in the neighbourhood.

PREMIUM AMENITIES AT YOUR DOORSTEP

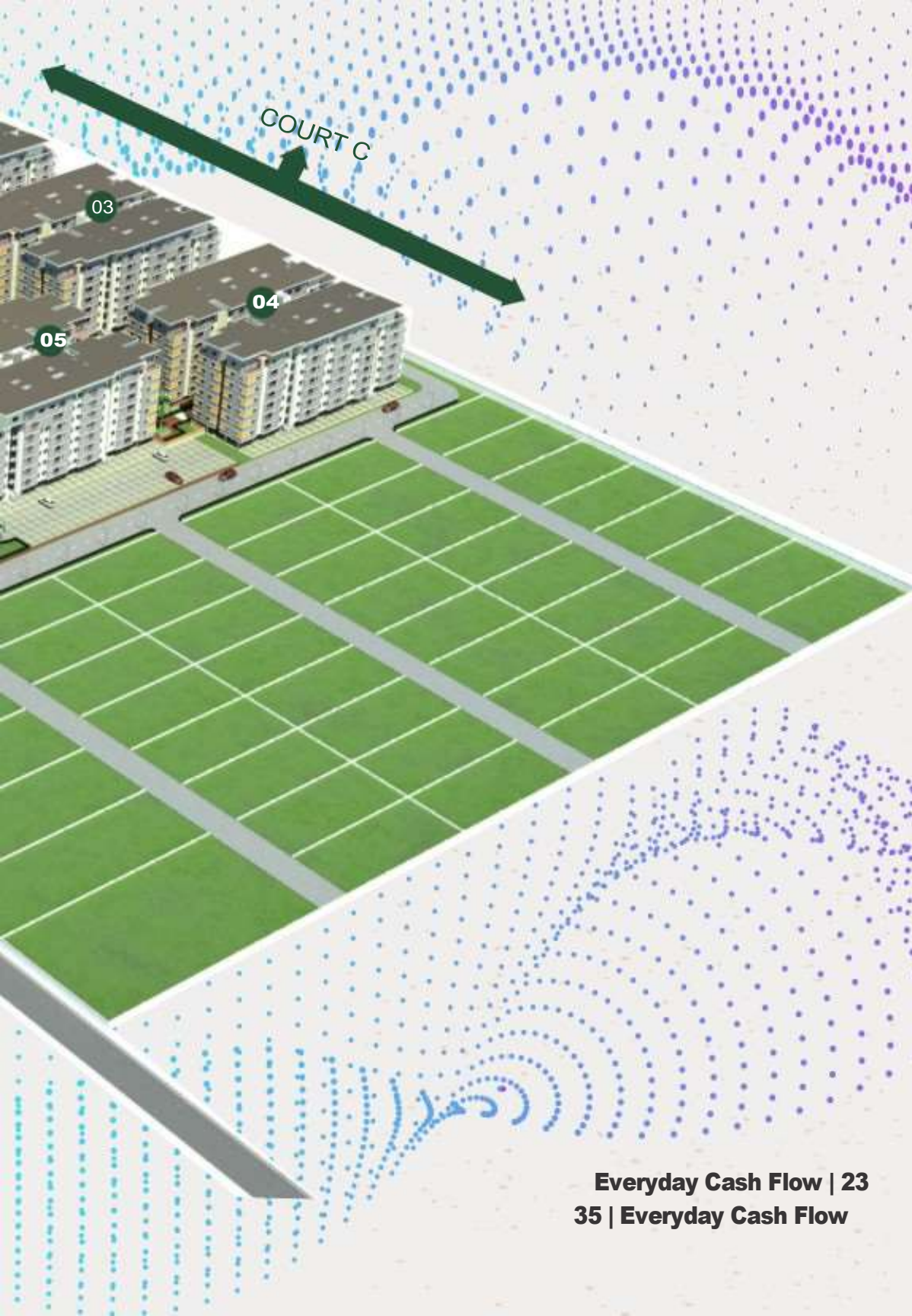
Our major aim is to proffer solution to the epileptic power supply so as to give residents of the estate constant power. In the event of this, we had a deal with one of the electricity distribution company in Lagos to get a dedicated feeder from transmission station which is as good as connecting to the national grid. Very few multi-national organisations and few residential estates are privileged to this service.

As a primary residence or an investment property, Fairfield Apartments offers the finest amenities in a unique location. Fairfield Apartments has good access to Urban Mall and Harbour Breeze, which offers residents great shopping experience and several outlets with an incredible variety of products. Urban Mall and Harbour Breeze also have several indoor and outdoor restaurants and cafes, as well as a range of entertainment offerings, including video games room and 4D cinema all these to provide residents with the ultimate in convenience and choice.



COURT A
SOLD OUT

COURT B
BLOCK 01, 03, AND 05 IS SOLD OUT



CHOOSE YOUR PREFERRED
APARTMENT

COURT NO.

Court A ☐ Court B ☐ Court C ☐

BLOCK NO.

Blk 01 ☐ Blk 02 ☐ Blk 03 ☐ Blk 04 ☐
Blk 05 ☐

FLOOR

1st Floor ☐ 2nd Floor ☐ 3rd Floor ☐
4th Floor ☐ 5th Floor ☐ 6th Floor ☐
7th Floor ☐

APARTMENT NO.

Apt 01 ☐ Apt 02 ☐ Apt 03 ☐ Apt 04 ☐
Apt 05 ☐ Apt 06 ☐ Apt 07 ☐ Apt 08 ☐
Apt 09 ☐ Apt 10 ☐ Apt 11 ☐ Apt 12 ☐
Apt 13 ☐ Apt 14 ☐ Apt 15 ☐ Apt 16 ☐
Apt 17 ☐ Apt 18 ☐ Apt 19 ☐ Apt 20 ☐

KITCHEN FINISH

☐ Orange Cabinet
☐ Light Brown Cabinet
☐ Dark Brown Cabinet
☐ Chocolate Cabinet
☐ Red Cabinet

FLOOR/ WALL TILE FINISH

☐ Cream Shades
☐ Grey Shades
☐ Black Shades
☐ Brown Shades
☐ Blue Shades

OFFICIAL USE ONLY

EVERY FAIRFIELD APARTMENT

is built to include the following;



Kitchen

- Full height splash back tiling up to underside of range hood
- Fully imported stainless steel counter-top mounted cooker unit and range hood
- In-built air extractor to all kitchen
- HDF Fitted Kitchen Cabinet
- ABS edging (no peel) to all cabinet doors
- Selected cabinet handles from our designer range
- Microwave recess/shelves (where displayed)

Bathrooms/Laundry

- Non-Vitrified Floor tiling to kitchen, bathrooms, toilet
- Vitreous China vanity basins to bathroom and toilet
- Recessed floor walk-in-shower
- Chrome towel rails and toilet roll holders
- Twyford wall faced top flush toilet suite with soft closing seat
- Blurred edge mirrors to bathrooms and toilet

Good Living Features

- Stylish metal levers on all internal doors
- Built-in robes with door/s, shelf and rail (where displayed)
- Soft closers to cupboard doors and drawers throughout
- Metal corner beads to all traffic areas to prevent plaster damage and chipping
- Metallic light switch covers
- Ceramic wall and floor tiles - choose from pre-selected colour schemes or customise

Services and Safety Features

- Dual Lock to entry door/s for ultimate style and security
- Flyscreens and burglar bars to windows
- Privacy locks to bathrooms and toilet
- Smoke alarms - for your protection
- External lights
- Electrical safety switch
- TV/ Cable points and TV antenna to copper areas
- LED lighting system
- Sewage system for every block
- Double power points throughout
- Quality steel bolt window locks

External Features

- Full paint finish excluding internal walls
- Smooth finished plasterboard ceilings (no joins) with bulkhead to balcony/ terrace
- Feature entry doors or glazed entry doors (where displayed)
- Choice of face brick, ceramic tile or painted render finish to front of house or end units - for street appeal
- Minimum of 1 vehicle parking space per unit
- Driveway - full width 6m paved and connecting footpath with
- Automated solar powered street lighting system
- Minimum of 2 vehicle parking space per unit



CONTACT US

FOR MORE INFO/PURCHASE

08101536132, 07045402656

www.ownahome.ng